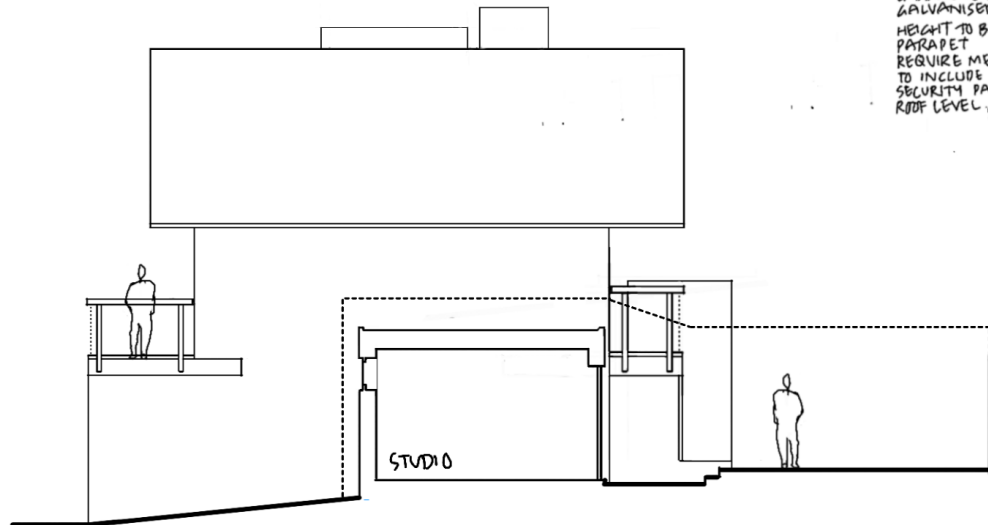
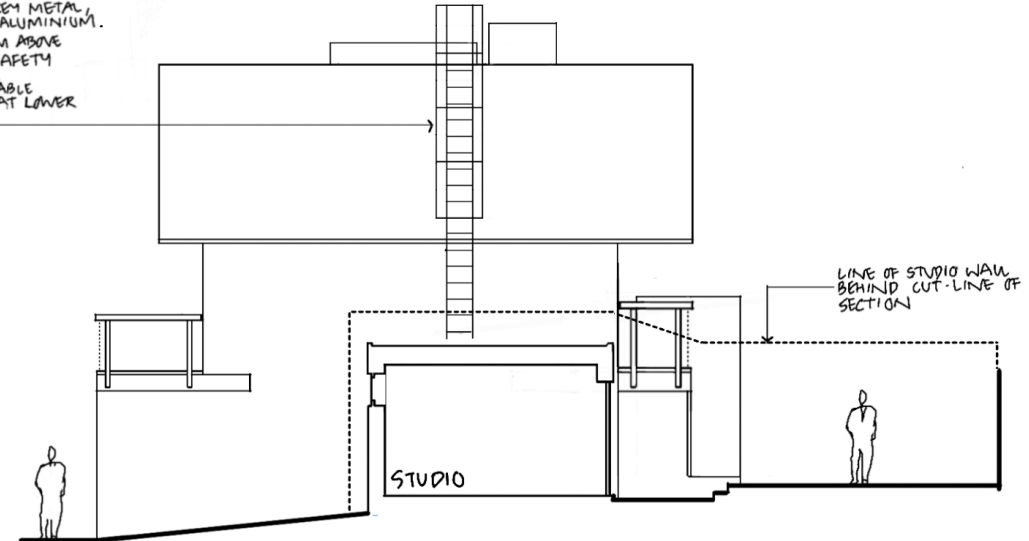


PROPOSED FIXED
LADDER FOR MAINTENANCE
ACCESS TO HEAT PUMPS AND
SOLAR PANELS.

LADDER TO BE GREY METAL
GALVANISED OR ALUMINIUM.
HEIGHT TO BE 1.1M ABOVE
PARAPET FOR SAFETY
REQUIREMENTS
TO INCLUDE LOCKABLE
SECURITY PANEL AT LOWER
ROOF LEVEL.



EXISTING WEST ELEVATION



PROPOSED WEST ELEVATION

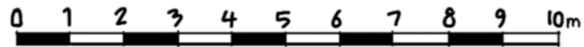
LINE OF STUDIO WALL
BEHIND CUT-LINE OF
SECTION

24 WINScombe ST
LONDON N19 9DG

24 JANUARY 2025

PROPOSED ACCESS
LADDER TO ROOFS

24 JAN '25 · DRG N° 560.06



FOR CONTRACT

DATE