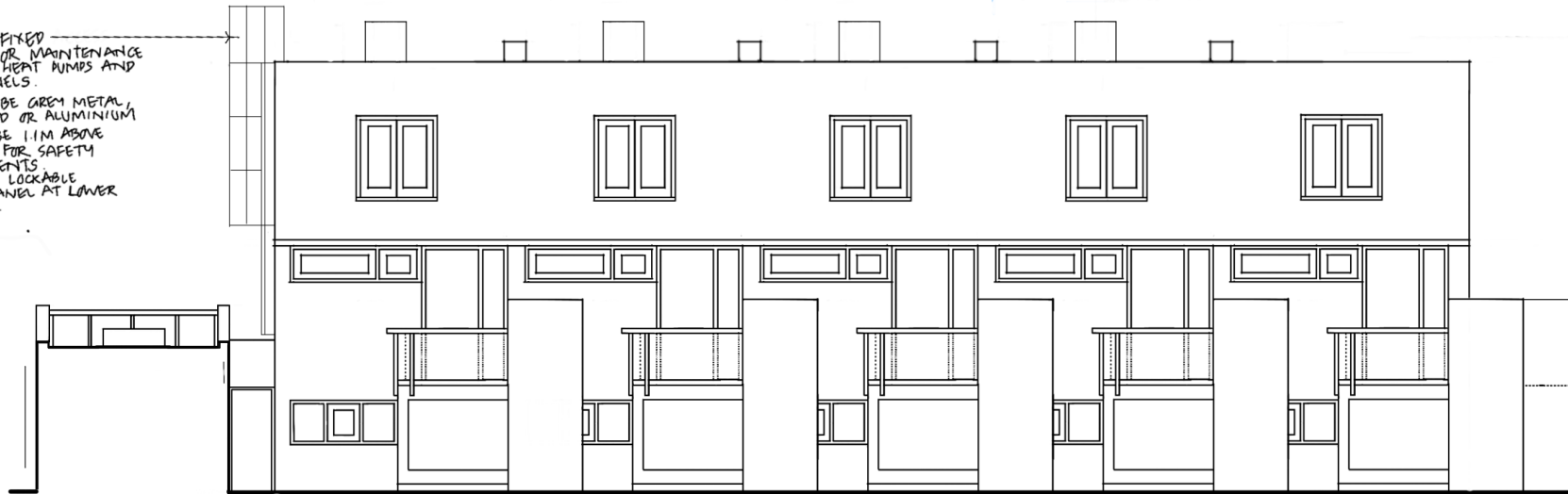


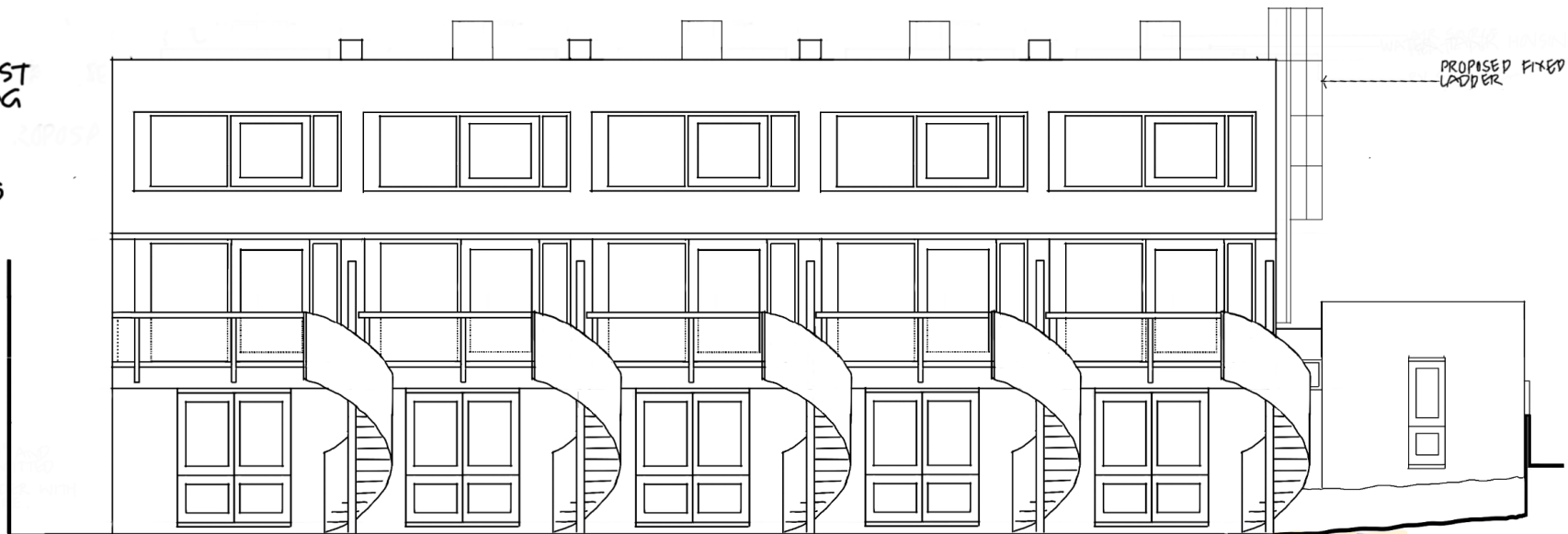
PROPOSED FIXED LADDER FOR MAINTENANCE ACCESS TO HEAT PUMPS AND SOLAR PANELS.  
LADDER TO BE GREY METAL GALVANISED OR ALUMINIUM HEIGHT TO BE 1.1M ABOVE PARAPET. FOR SAFETY REQUIRE MENTS TO INCLUDE LOCKABLE SECURITY PANEL AT LOWER ROOF LEVEL.



PROPOSED NORTH ELEVATION

0 1 2 3 4 5m

24 WINSCOMBE ST  
LONDON N19 5DG  
24 JANUARY 2025  
PROPOSED ACCESS  
LADDER TO ROOFS



PROPOSED FIXED LADDER

PROPOSED SOUTH ELEVATION

24 JAN 2025. DRG NO 560.05