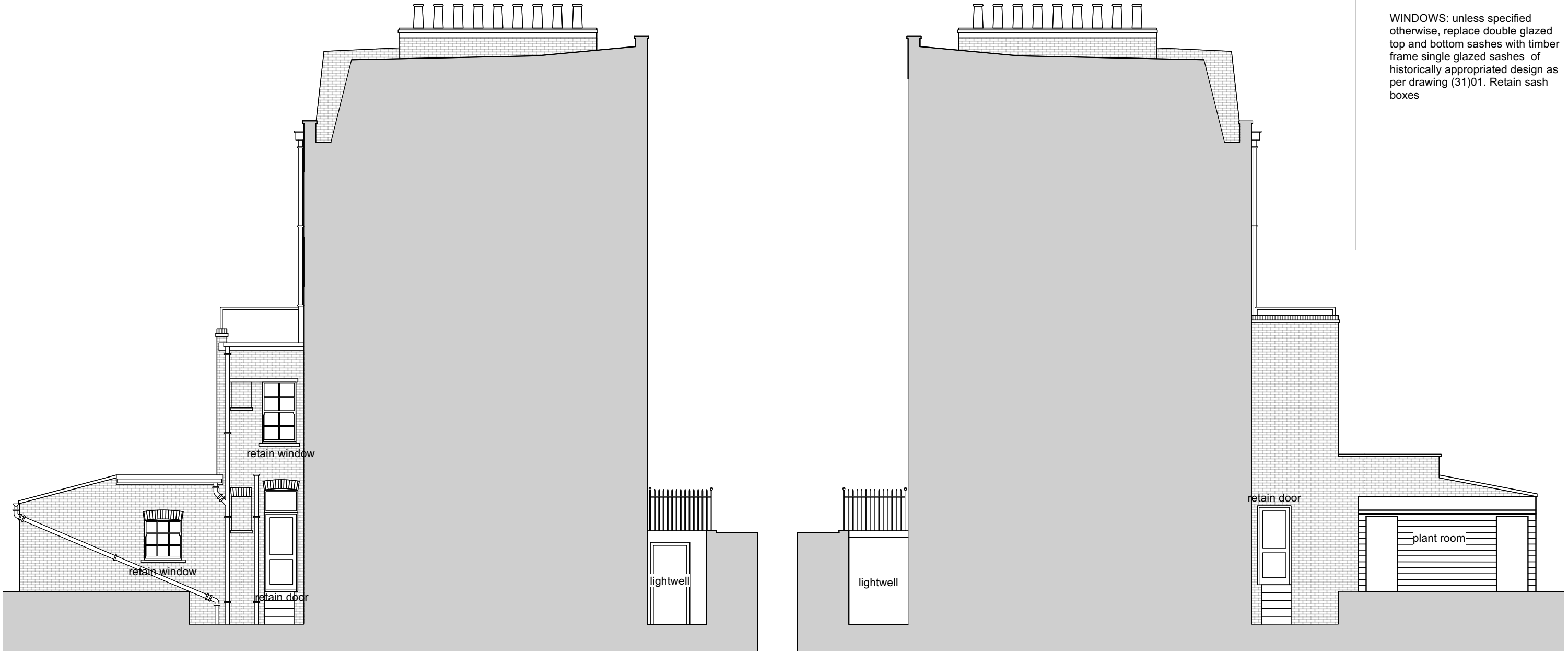


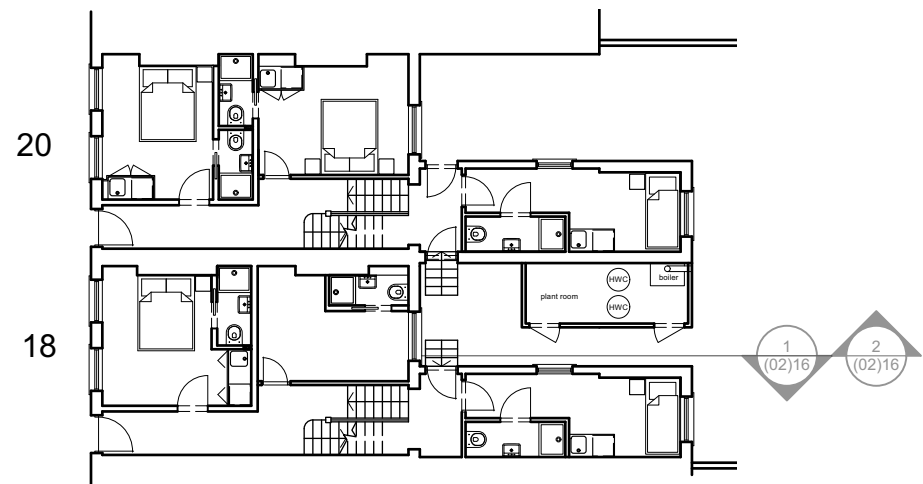
Notes

GENERALLY:
 WINDOWS: unless specified otherwise, replace double glazed top and bottom sashes with timber frame single glazed sashes of historically appropriated design as per drawing (31)01. Retain sash boxes



1 Proposed South East Elevation
 (02)16 Scale: 1:100

2 Proposed North West Elevation
 (02)16 Scale: 1:100



Key to sections



A Annotations updated 01/08/2024

Revisions

Kelley House
 18-20 Royal College Street
 NW1

Proposed Side Elevations no18
 No18

ROGER MEARS ARCHITECTS LLP
 Union Chapel, Compton Avenue London N1 2XD

rma@rmears.co.uk tel 020 7359 8222
 www.rmears.co.uk © Roger Mears Architects LLP

Date Sep 2024	Scale 1:100@A3
------------------	-------------------

Job No. 2245	Dwg No. (02)16	Rev A
-----------------	--------------------------	----------