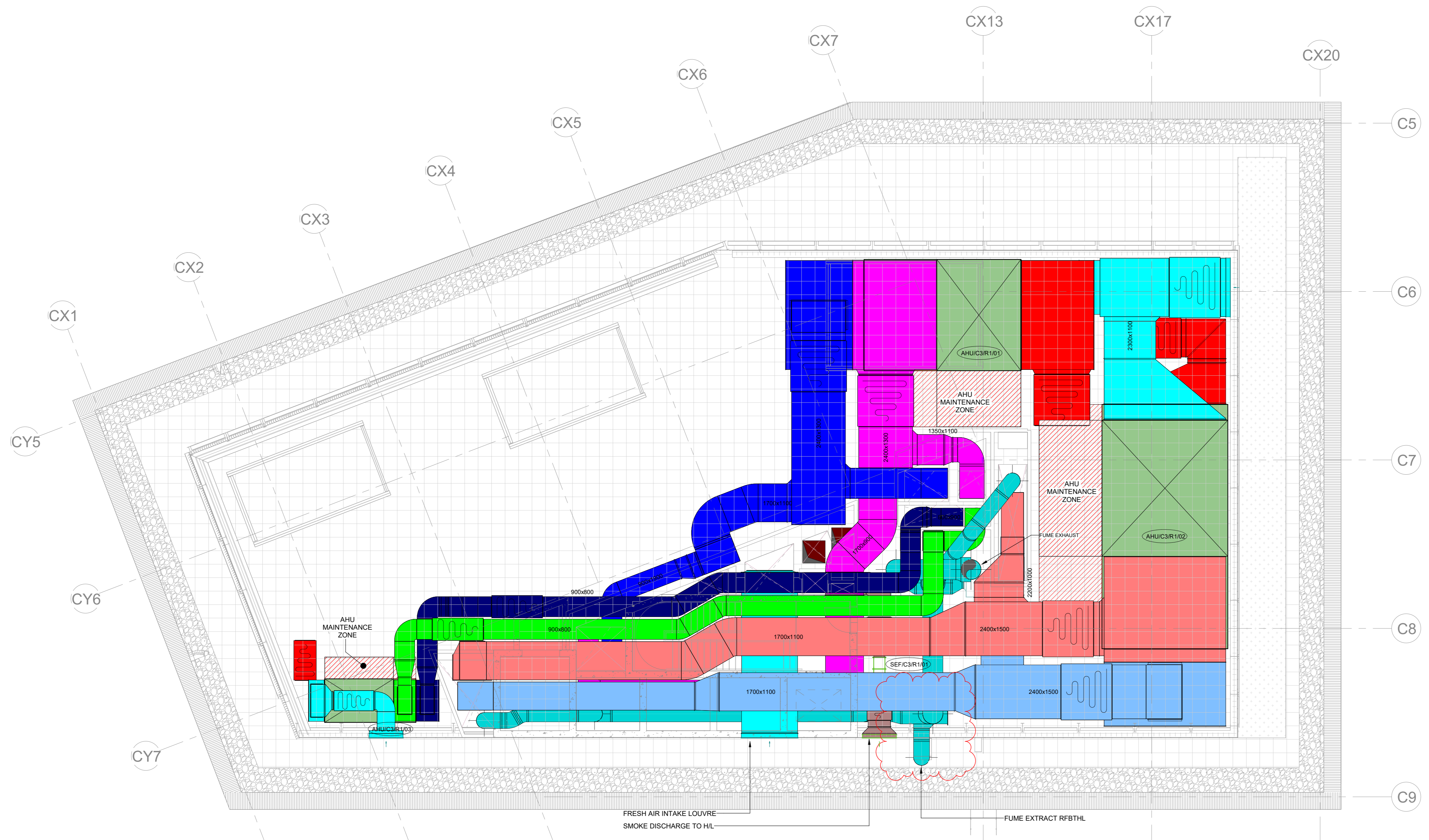


KEY PLAN

NOTES

- DO NOT SCALE FROM THIS DRAWING.
- ALL DIMENSIONS AND DUCT SIZES SHOWN ARE IN MILLIMETER EXCEPT WHERE NOTED OTHERWISE.
- THIS DRAWING IS TO BE READ IN CONJUNCTION WITH ALL KJ TAIT ARCHITECTS AND STRUCTURAL ENGINEERS DRAWINGS.
- LAYOUTS ARE INTENDED TO BE USED AS A GUIDE ONLY AND DO NOT SHOW ALL SYSTEM COMPONENTS, REFER TO SCHEMATIC (WHERE PROVIDED) FOR FULL DETAILS.
- PLEASE REFER TO VENTILATION SCHEMATIC FOR RISER DUCTWORK SIZES.
- THIS SCHEMATIC DRAWING HAS BEEN PRODUCED TO INDICATE STAGE 3 DESIGN INTENT ONLY. ALL SIZES AND DUTIES INDICATED ARE FOR GUIDANCE PURPOSES ONLY. THE CONTRACTOR SHALL BE RESPONSIBLE FOR THE PROJECT DESIGN AND INSTALLATION AS SET OUT IN THE PROJECT SPECIFICATIONS AND CONTRACT DOCUMENTS.
- ALL DIMENSIONS ARE IN MM UNLESS OTHERWISE STATED.
- CONTRACTORS SHALL CHECK THE ARCHITECTS DRAWINGS FOR FINAL POSITIONING OF FIRE BARRIERS. FIRE DAMPERS SHALL BE FITTED WHERE ALL DUCTWORK PASSES THROUGH FIRE COMPARTMENT WALLS, FLOORS & CEILING. ALL HOLES 50MM OR LESS BY SERVICES CONTRACTOR.
- SUPPLY & EXTRACT DUCTWORK SYSTEMS SHALL BE IN ACCORDANCE WITH LW 154 & TESTED IN ACCORDANCE WITH DW 143.
- AS REQUIRED VOLUME CONTROL DAMPERS SHALL BE INSTALLED IN ALL BRANCHES TO PROVIDE PROPORTIONAL BALANCING TO MEET THE REQUIREMENTS OF C.I.B.S.E COMMISSIONING CODES.
- ALL GRILLES & DIFFUSERS SHALL HAVE OPPOSED BLADE VOLUME CONTROL DAMPERS TO ENABLE FINAL VOLUME TRIMMING. THESE DAMPERS SHALL NOT BE USED FOR SYSTEM PROPORTIONAL BALANCING.
- DUCTWORK FLEXIBLE CONNECTIONS SHALL BE LIMITED TO A MAXIMUM OF 1000mm.
- ALL SUPPLY & EXTRACT DUCTWORK SHALL BE INSULATED.
- FLUE EXTRACT DUCTWORK SHALL BE MANUFACTURED IN UPVC DUCTWORK IN ACCORDANCE WITH DW 154. THE HIGH PRESSURE DISCHARGE DUCTWORK FROM ALL FLUE EXTRACT FAN SHALL BE FULLY WELDED.
- FLUE EXTRACT DUCTWORK TO HAVE INTUMESCENT FIRE COLLARS TO MEET THE ARCHITECTS FIRE STRATEGY.
- FLUE EXTRACT DUCTWORK UP TO THE FANS SHALL BE PRESSURE TESTED IN ACCORDANCE WITH DW 143 CLASS C. DUCTWORK ON THE FAN DISCHARGES SHALL BE PRESSURE TESTED TO A VALUE OF CLASS C-1.
- ON COMPLETION OF TESTING, THE FLUE EXTRACT SYSTEM & FLUE CURPWARDS SHALL BE VALIDATED BY AN EXTERNAL SPECIALIST COMMISSIONING CONTRACTOR.
- FLUE EXTRACT SHALL NOT BE INSULATED.
- THE CONTRACTOR SHALL ENSURE THE CLEANLINESS OF THE DUCTWORK SHALL MEET THE STANDARDS OF BMS (MCAI) R19 SECOND EDITION. ALL DUCTWORK SHALL BE MANUFACTURED, DELIVERED, STORED AND INSTALLED TO MEET THE MEDIUM STANDARD. LABORATORY DUCTWORK WILL BE CLEANED BY A SPECIALIST FOLLOWING INSTALLATION ON THE COMPLETED DESIGN.
- LAB SERVICES TO BE PRICED SEPARATELY.



LEGEND

- █ GENERAL SUPPLY AIR DUCTWORK
 - █ GENERAL EXTRACT AIR DUCTWORK
 - █ LAB SUPPLY AIR DUCTWORK
 - █ LAB EXTRACT AIR DUCTWORK
 - █ EXHAUST AIR DUCTWORK
 - █ FRESH AIR INTAKE DUCTWORK
 - █ TOILET SUPPLY AIR DUCTWORK
 - █ TOILET EXTRACT AIR DUCTWORK
 - █ FLUE EXTRACT DUCTWORK
 - █ GENERATOR EXHAUST DUCTWORK
 - █ SMOKE EXTRACT DUCTWORK
 - FIRE RATED DUCTWORK
 - FUTURE TENANT VENTILATION INSTALLATION (NOT INCLUDED IN BASEBUILD CONTRACT)
- DFA DROP FROM ABOVE
 RTA RISE TO ABOVE
 RTHL RISE TO HIGH LEVEL
 DFATHL DROP FROM ABOVE TO HIGH LEVEL
 RFBTHL RISE FROM BELOW TO HIGH LEVEL
 DTLL DROP TO LOW LEVEL
 DFATB DROP FROM ABOVE AND TO BELOW
 AHU AIR HANDLING UNIT
 CAV CONTINUOUS AIR VOLUME
 FD FIRE DAMPER
 MFD MOTORIZED FIRE & SMOKE DAMPER
 HB HEATER BATTERY
 IFC INTUMESCENT FIRE COLLAR

REF	REV	DATE	DESCRIPTION	BY	CHK
S2-P04	08/07/2023		ADDITIONAL SMOKE CLEARANCE SYSTEM ADDED	BM	JW
S2-P03	28/02/2023		STAGE 3 UPDATE	BM	NW/JW
S2-P02	02/02/2023		GENERAL LAYOUT UPDATE	BM	NW/JW
S2-P01	18/12/2022		STAGE 3 ISSUE	GT	NW

STAGE 3

THIS DRAWING IS COPYRIGHT © DO NOT SCALE FROM DRAWING. THE CONTRACTOR AND THEIR SUB-CONTRACTORS ARE TO VERIFY ALL DIMENSIONS ON SITE BEFORE MAKING SHOP DRAWINGS OR COMMENCING MANUFACTURE.

KJ TAIT ENGINEERS
 4 Hill Road
 Cambridge CB2 1LP
 T +44 (0) 1223 460008
 E cambridge@kjt.com
 W www.kjt.com

PROJECT INFORMATION			
CLIENT	REF GROUP		
PROJECT	PLOT C TRIBECA CAMDEN		
DRAWING INFORMATION			
DRAWING TITLE	MECHANICAL SERVICES PLOT C3 LEVEL RF VENTILATION LAYOUT		
DESIGNED BY	GT	DATE	JUN. 2022
DRAWN BY	BM	KJT JOB NO.	
SCALE	1:100 @ A0	C2718	
JOB CODE	C2718	DRWNO. LEVEL TYPE ROLE CLASS NUMBER	SUIT. REV
	KJT-C3-RF-DR-M-5701		S2 - P04