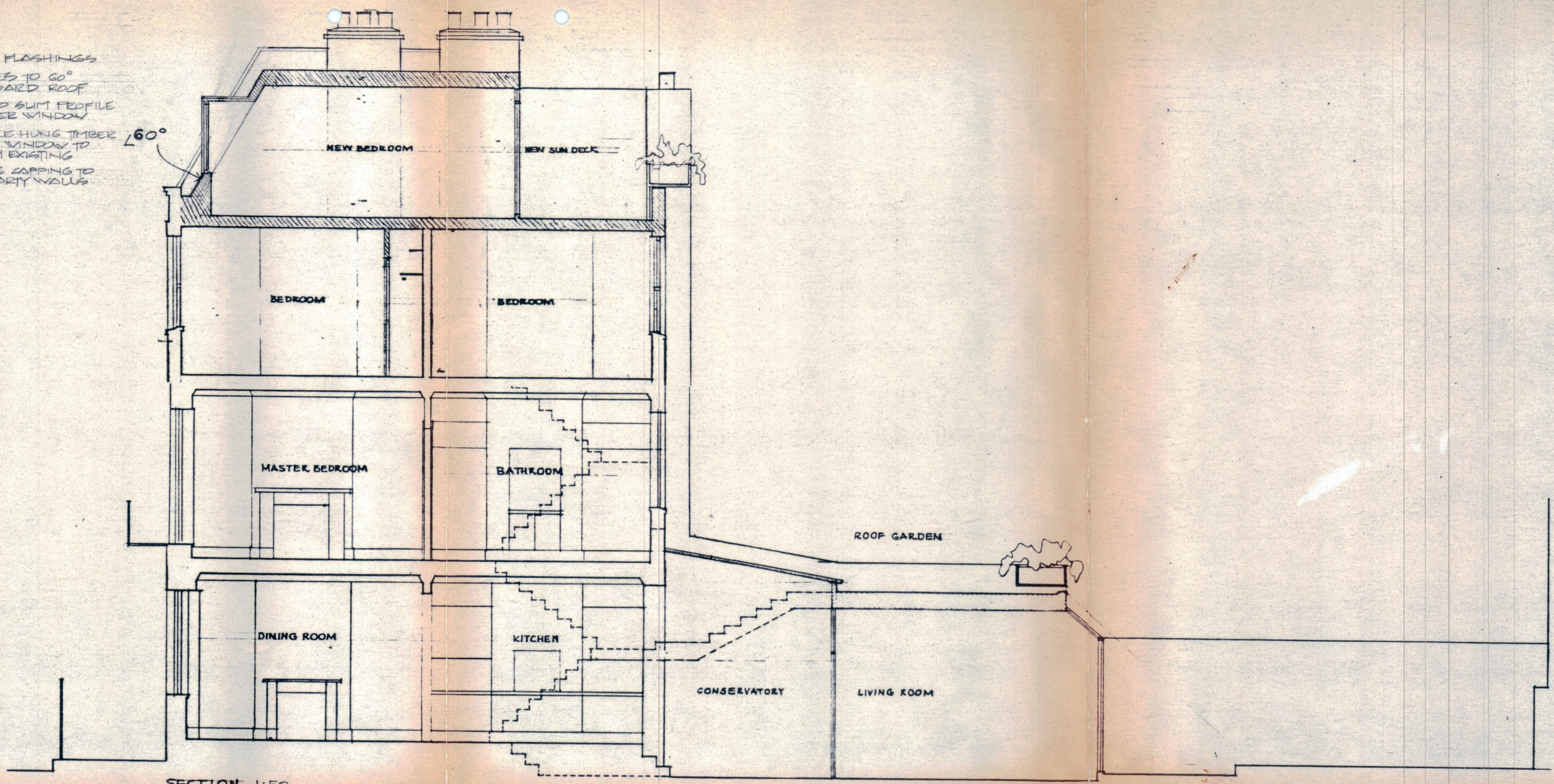
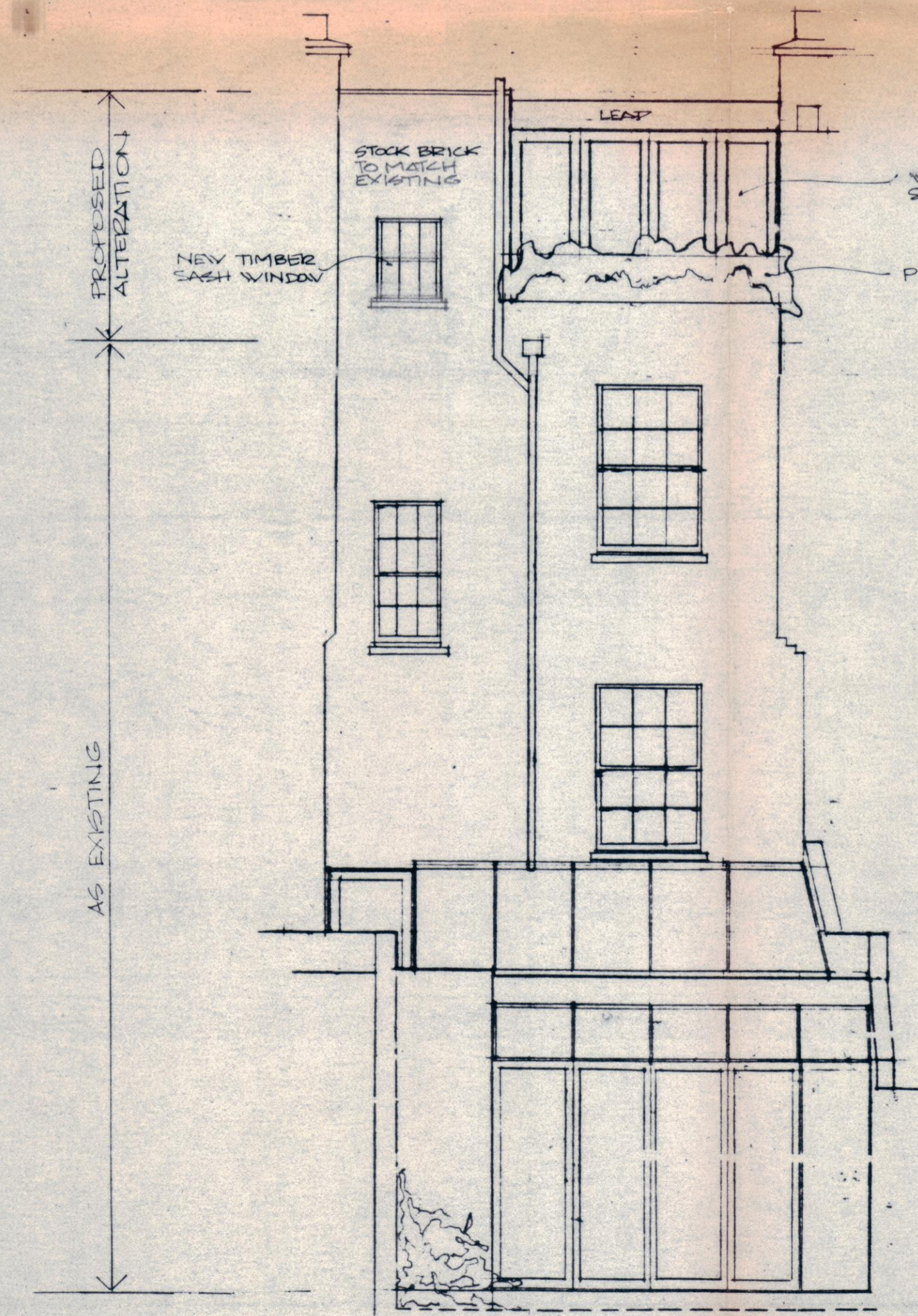


FRONT ELEVATION

LEAD FLASHINGS
 SLATES TO 60°
 MANSARD ROOF
 LEAD TO SUIT PROFILE
 PROMISE WINDOW
 DOUBLE HUNG TIMBER
 SASH WINDOW TO
 MATCH EXISTING
 STONE CAPPING TO
 60° PARTY WALLS

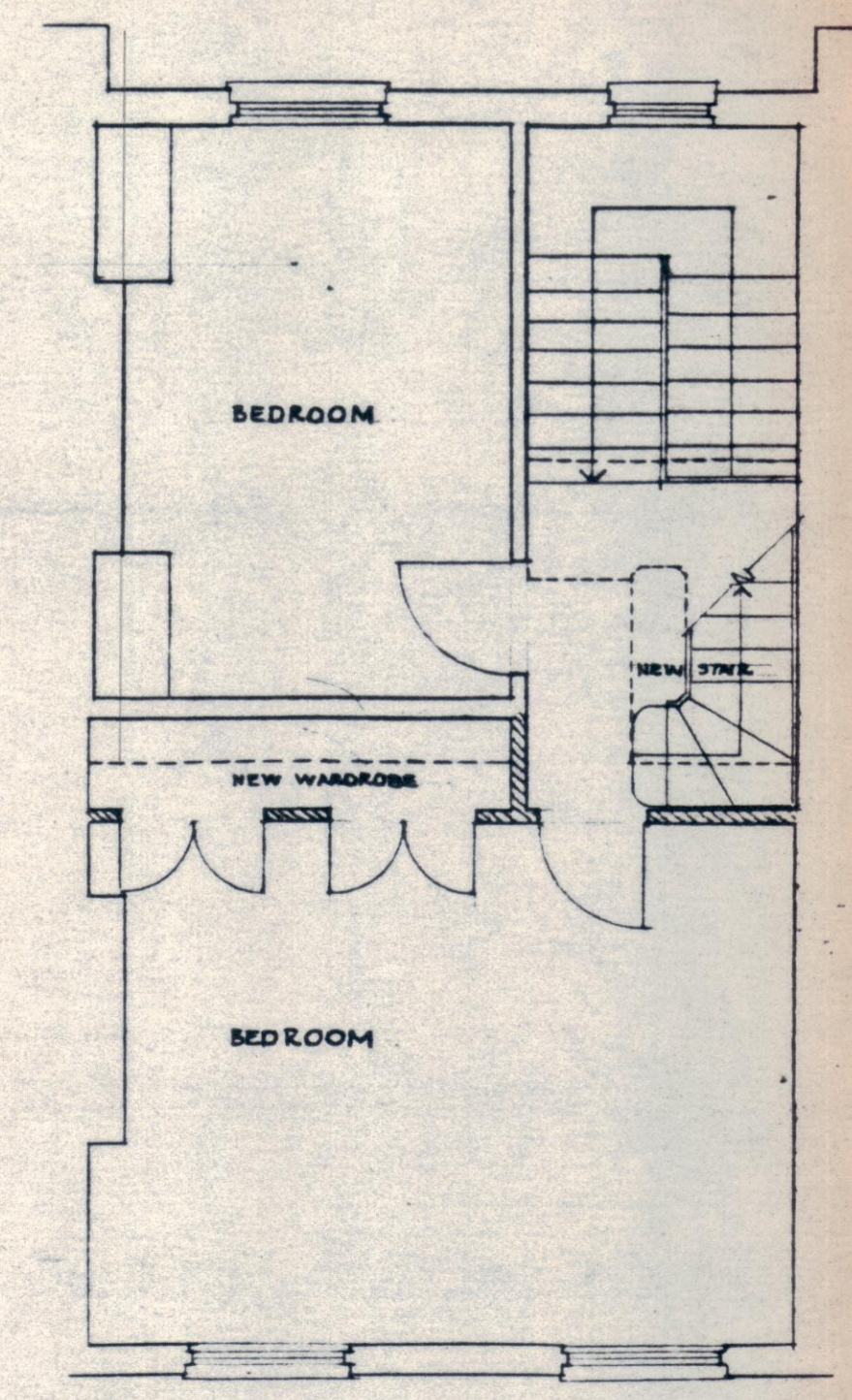


SECTION 1:50

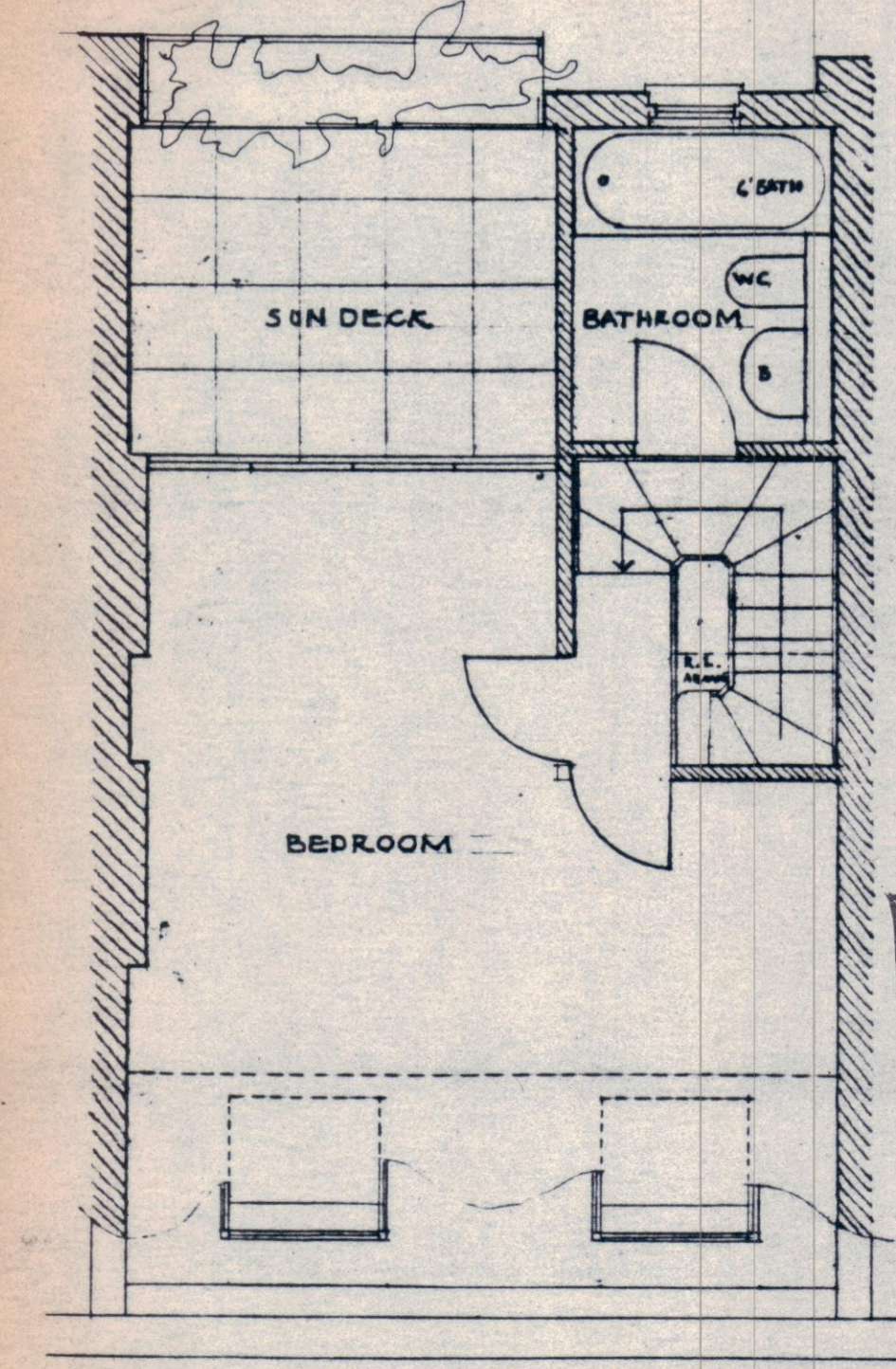


BACK ELEVATION

STOCK BRICK
 TO MATCH
 EXISTING
 NEW TIMBER
 SASH WINDOW
 LEAF
 WHITE
 SLIDING DOORS
 PLANTER BOX



SECOND FLOOR



NEW THIRD FLOOR

LONDON BOROUGH OF CAMDEN
 TOWN AND COUNTRY PLANNING ACTS
 05 MAR 1986
 APPROVED
 PLANS NOT APPROVED
 ON BEHALF OF THE COUNCIL

LONDON BOROUGH OF CAMDEN
 TOWN AND COUNTRY PLANNING ACTS
 19 FEB 1986
 APPROVED
 PLANS NOT APPROVED
 ON BEHALF OF THE COUNCIL

TP 8502180R1
 HB 8570377R1

PROPOSED ALTERATIONS TO NO. 127 ALBERT STREET LONDON NW1 FOR JAMES DEWE MATHEWS
 MARK GUARD : 01 609 0809.
 DEC 1985 : SCALE 1:50 : DWG 110/2 A
 REV 'A' JAN 86 ROOF SLOPE, SASH WINDOWS AND PARTY WALLS REVISED