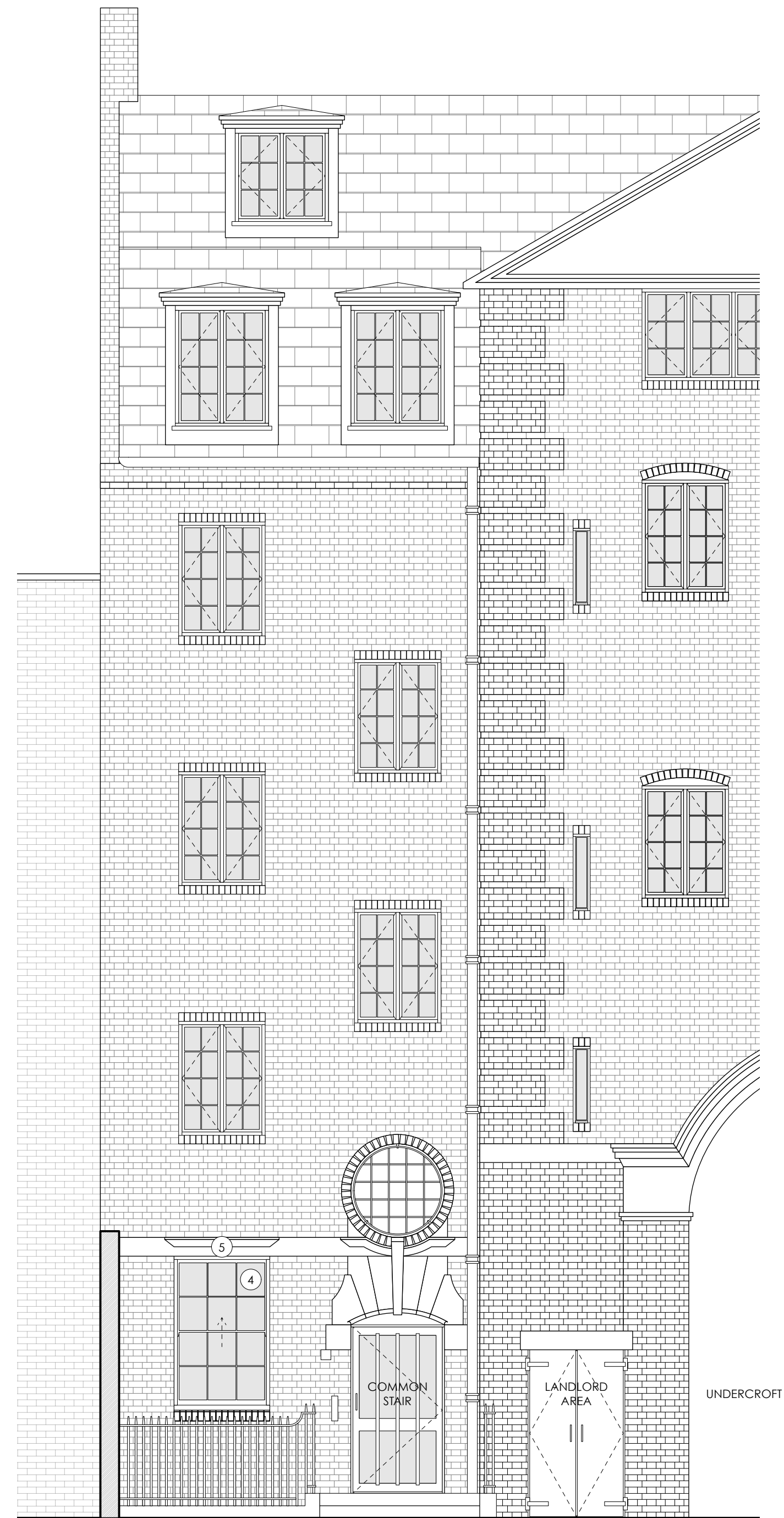


1 PROPOSED ELEVATION - CLERKENWELL ROAD
1:50

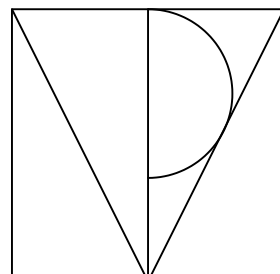


2 PROPOSED ELEVATION - REAR
1:50

SCOPE OF WORKS - PROPOSED

- 1 REPLACE EXISTING TIMBER WINDOW WITH SELECTED NEW ALUMINIUM.
- 2 REPLACE EXISTING ALUMINIUM DOOR AND TIMBER FANLIGHT WITH ALUMINIUM FRAMED DOOR AND FANLIGHT.
- 3 REMOVE FLOORING TO ENABLE NEW CIRCULATION STAIR.
- 4 INSTALL NEW TIMBER STAIR.
- 5 REPLACE DAMAGED PANES OF GLASS.
- 6 REPAIRS TO WINDOW LINTEL (INTERNAL). REF. SHEETS P401 & P402. FOLLOW INSTRUCTIONS FROM SPECIALIST.

0 1 3 5 M



TPM Studio
Canonbury Yard
New North Road
London N1 7BJ

+44 (0) 20 3773 3374
info@tpm-studio.co.uk
www.tpm-studio.co.uk

MATERIAL LEGEND	
1	BRICK
2	GLAZED BRICK
3	STUCCO RENDER
4	SLATE TILES
5	TIMBER FRAMED WINDOWS/DOORS
6	ALUMINIUM FRAMED WINDOWS/DOORS

REVISION NOTES:
0 29/01/2025 ISSUED FOR PLANNING

GENERAL NOTES:
1. ALL DIMENSIONS IN MM UNLESS OTHERWISE STATED
2. ALL DIMENSIONS TO BE CHECKED ON SITE BY THE CONTRACTOR
3. DO NOT SCALE FROM THIS DRAWING
4. TO BE READ IN CONJUNCTION WITH RELEVANT CONTRACT DRAWINGS
5. TO BE READ IN CONJUNCTION WITH RELEVANT ENGINEERS DRAWINGS
6. REPORT ANY ERRORS, OMISSIONS AND DISCREPANCIES TO THE ARCHITECT

Project Title: 123 CLERKENWELL ROAD
Project Ref: 1207
Status: PLANNING
Scale: AS NOTED / A1
Sheet Title: ELEVATIONS - PROPOSED
Sheet Ref: P303 /