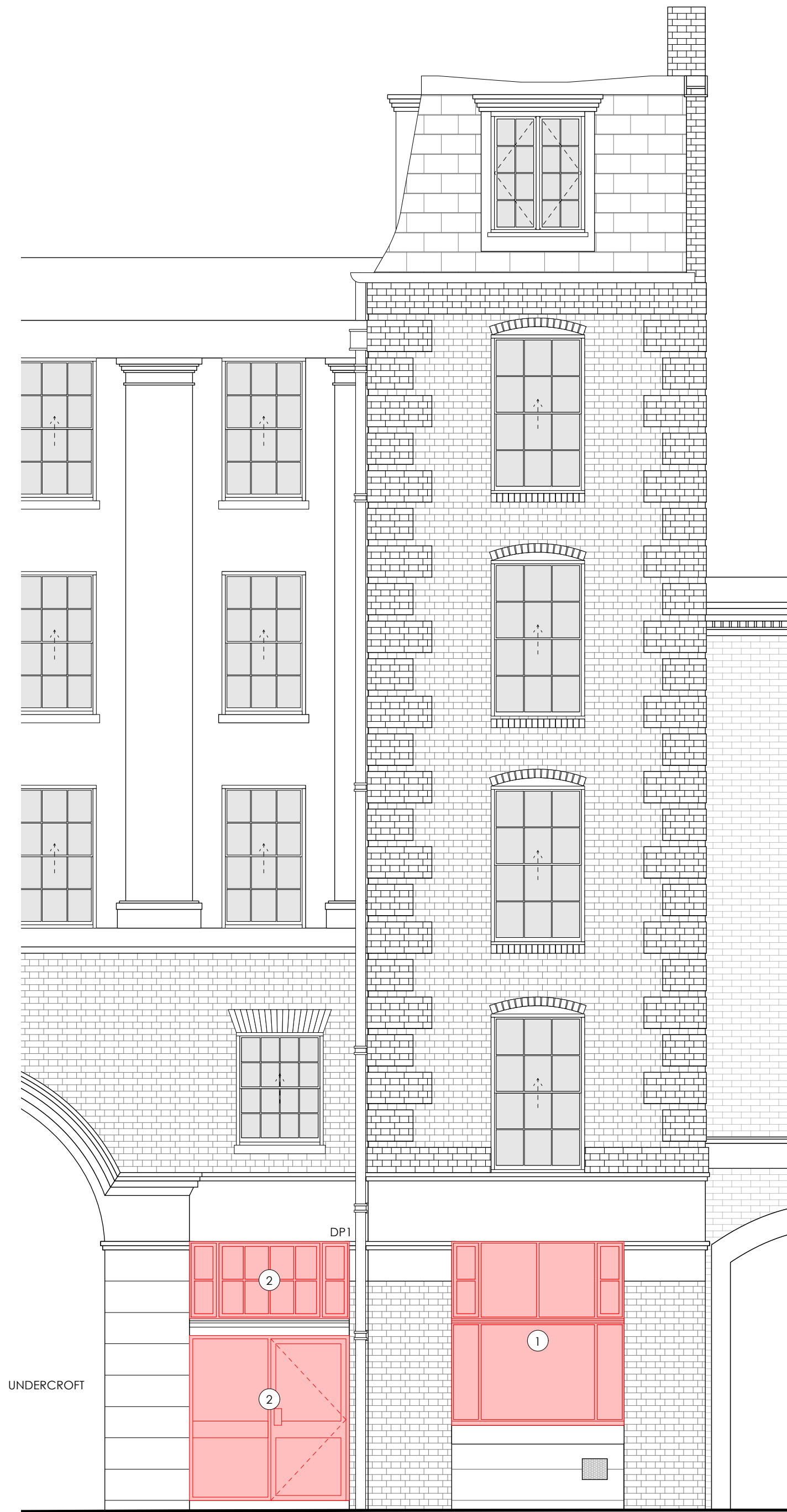
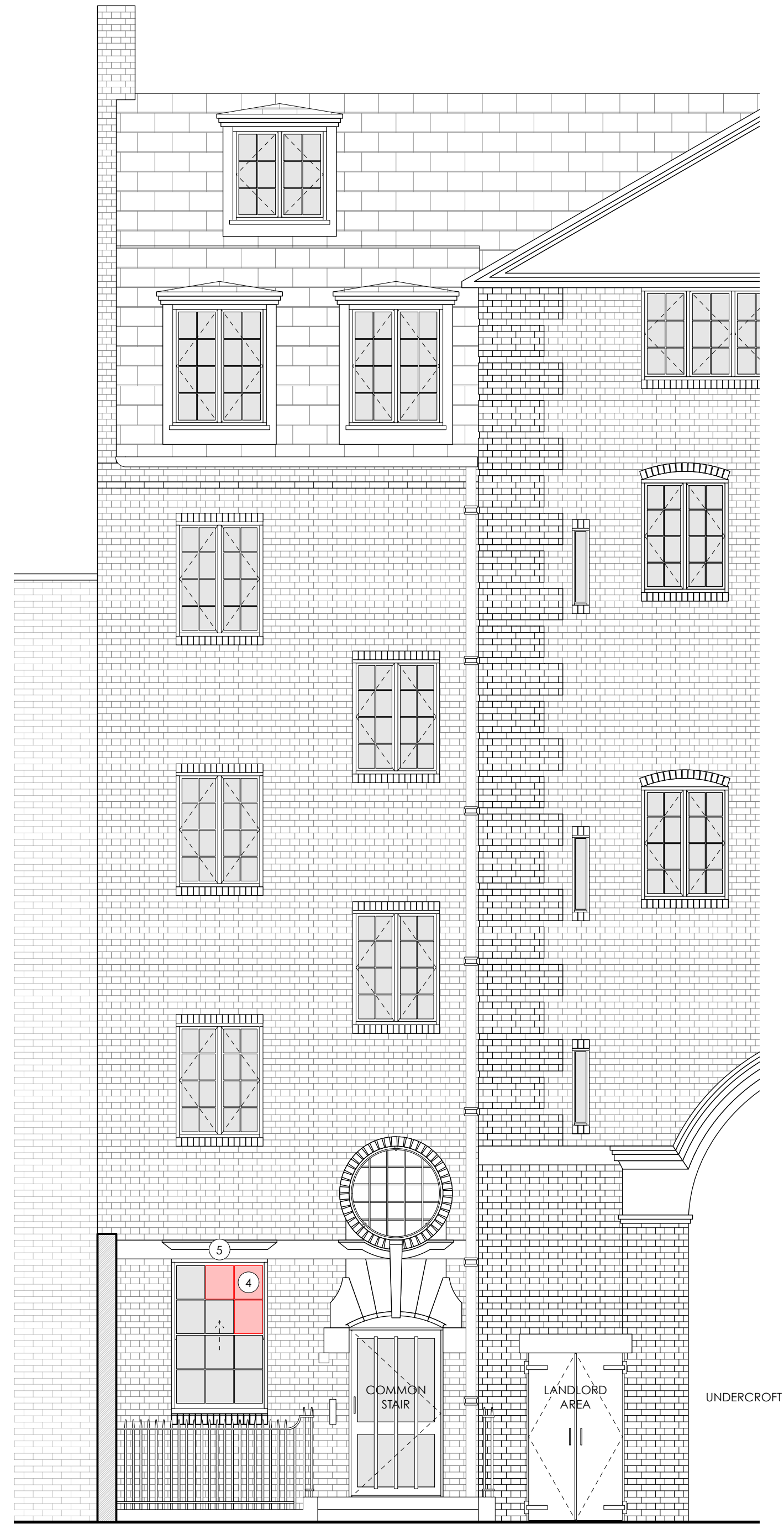


SCOPE OF WORKS - DEMOLITION

- 1 REMOVE EXISTING TIMBER WINDOW
- 2 REMOVE EXISTING ALUMINIUM DOOR AND TIMBER FANLIGHT OVER
- 3 REMOVE FLOORING AND ADAPT TO ENABLE NEW CIRCULATION STAIR.
- 4 REPLACE DAMAGED PANES OF GLASS.
- 5 REPAIRS TO EXISTING OF WINDOW LINTEL (INTERNAL), REF. SHEETS P401 & P402. FOLLOW INSTRUCTIONS FROM SPECIALIST.

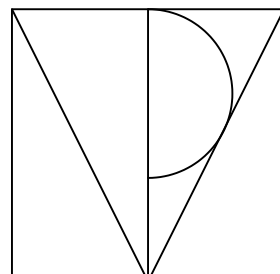


1 EXISTING ELEVATION WITH DEMO - CLERKENWELL ROAD
1:50



2 EXISTING ELEVATION WITH DEMO - REAR
1:50

0 1 3 5 M



TPM Studio
Canonbury Yard
New North Road
London N1 7BJ

+44 (0) 20 3773 3374
info@tpm-studio.co.uk
www.tpm-studio.co.uk

MATERIAL LEGEND

- 1 BRICK
- 2 GLAZED BRICK
- 3 STUCCO RENDER
- 4 SLATE TILES
- 5 TIMBER FRAMED WINDOWS/DOORS
- 6 ALUMINIUM FRAMED WINDOWS/DOORS

REVISION NOTES:
0 29/01/2025 ISSUED FOR PLANNING

GENERAL NOTES:
1. ALL DIMENSIONS IN MM UNLESS OTHERWISE STATED
2. ALL DIMENSIONS TO BE CHECKED ON SITE BY THE CONTRACTOR
3. DO NOT SCALE FROM THIS DRAWING
4. TO BE READ IN CONJUNCTION WITH RELEVANT CONTRACT DRAWINGS
5. TO BE READ IN CONJUNCTION WITH RELEVANT ENGINEERS DRAWINGS
6. REPORT ANY ERRORS, OMISSIONS AND DISCREPANCIES TO THE ARCHITECT

Project Title: 123 CLERKENWELL ROAD
Project Ref: 1207
Status: PLANNING
Scale: AS NOTED / A1
Sheet Title: ELEVATIONS - DEMO
Sheet Ref: P302 /