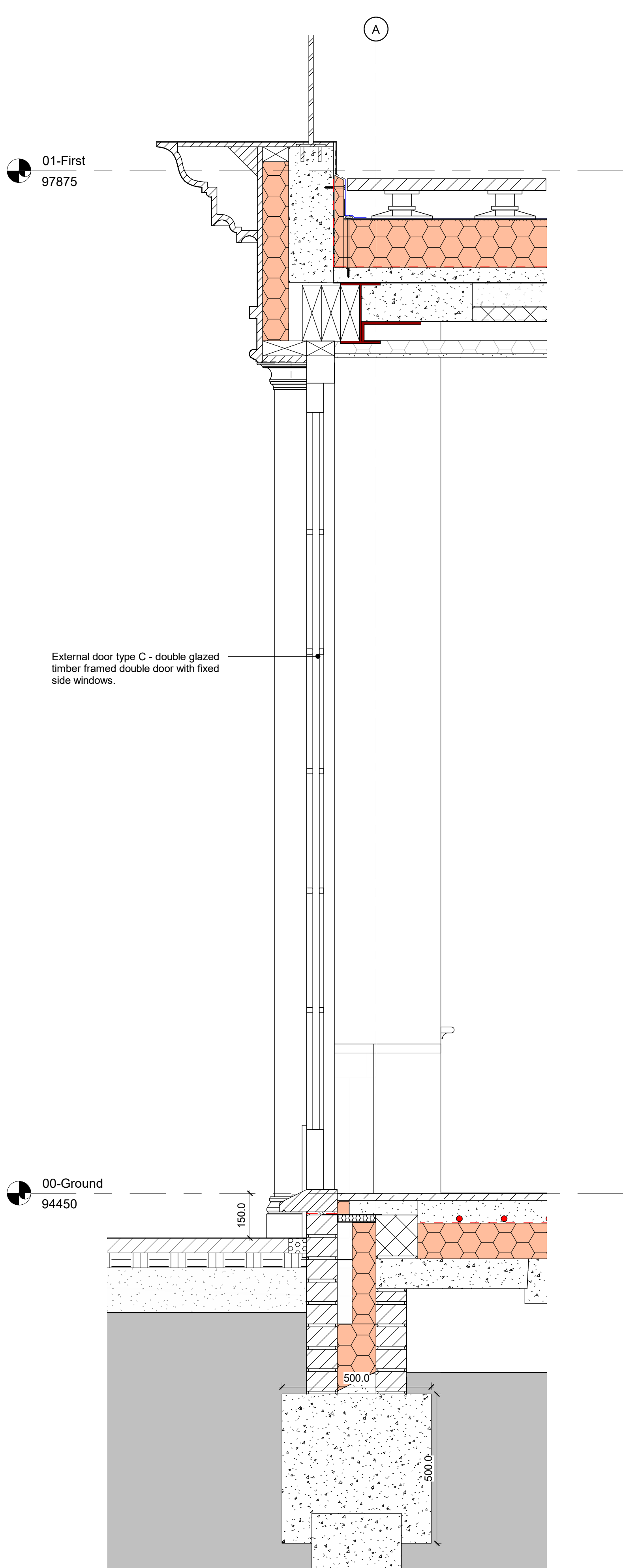
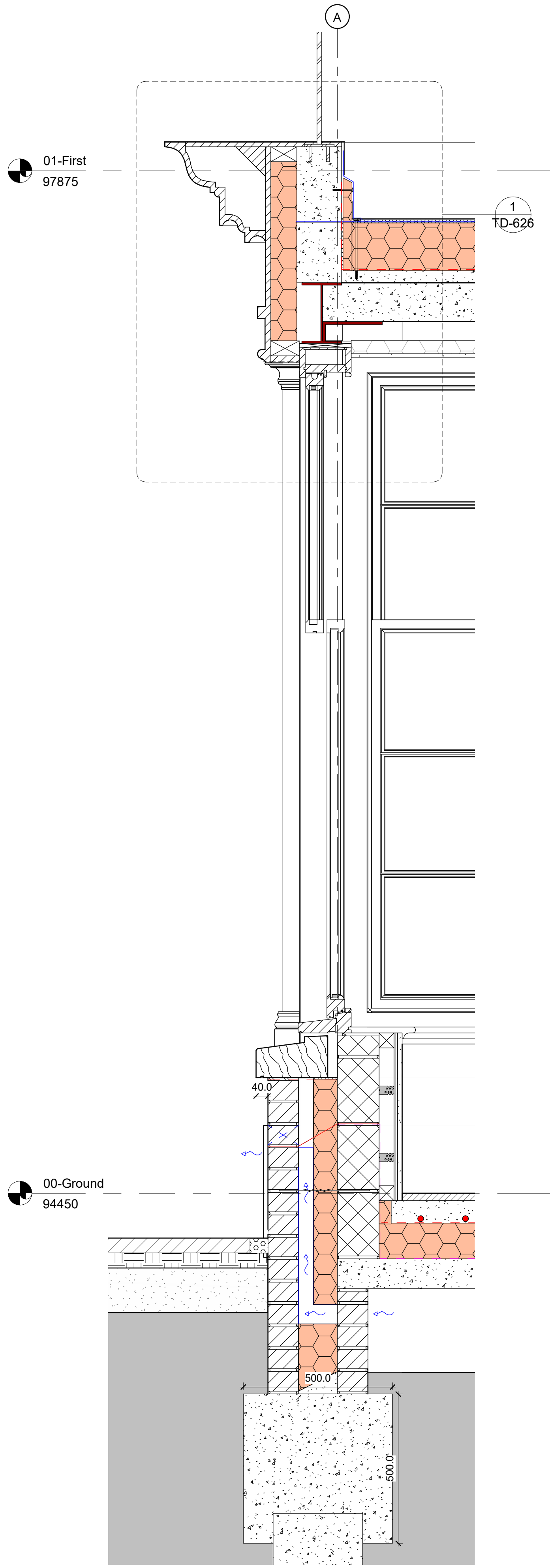


Notes:



Section Through Orangery Door  
1 : 10



Section Through Orangery Window  
1 : 10

Metal handrail drawn indicatively. Structural Engineer to confirm fixing detail.

Lead flashing to timber profile.

Bauder waterproofing detail to specifications design and information.

Concrete upstand to support metal handrail. Structural Engineer to confirm fitting and concrete detail.

Insulation infill as required.

Steel to Structural Engineer's design and specification. Structural Engineer to confirm if the steel can sit flush with the top of the concrete deck.

Detail 1 - Orangery Head Detail  
1 : 5

Timber pilaster to specilast design insulation in fill as required.

SHS to Structural Engineer's design and specification. SHS to be wrapped in 10mm aerogel insulation to reduce cold bridging effect.

Kingspan insulated plasterboard internal lining.

Timber supports as required to be wrapped in 10mm aerogel insulation to reduce cold bridging effect.

Rev	Description	Date	Drawn	Clkd
0	Tender Issue	22.09.23		



16 lambton place  
notting hill  
london w112sh  
t 02072293125  
f 02072293257  
e info@wolffarchitects.co.uk

status:

TENDER

project:  
7 Redington Gardens  
London NW3 7RU

drawing title:

Orangery Details

date:  
09/19/23

scale:  
As  
indicated

dwg no:  
2252-TD-626

rev no:  
0