



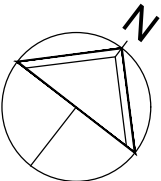
WOLFF ARCHITECTS

London 16 Lambton Place Notting Hill
London W11 2SH
T +44 (0)20 7229 3125

Oxford Chandos Yard 83 Bicester Road
Long Crendon HP18 9EE
T +44 (0)1844 203310

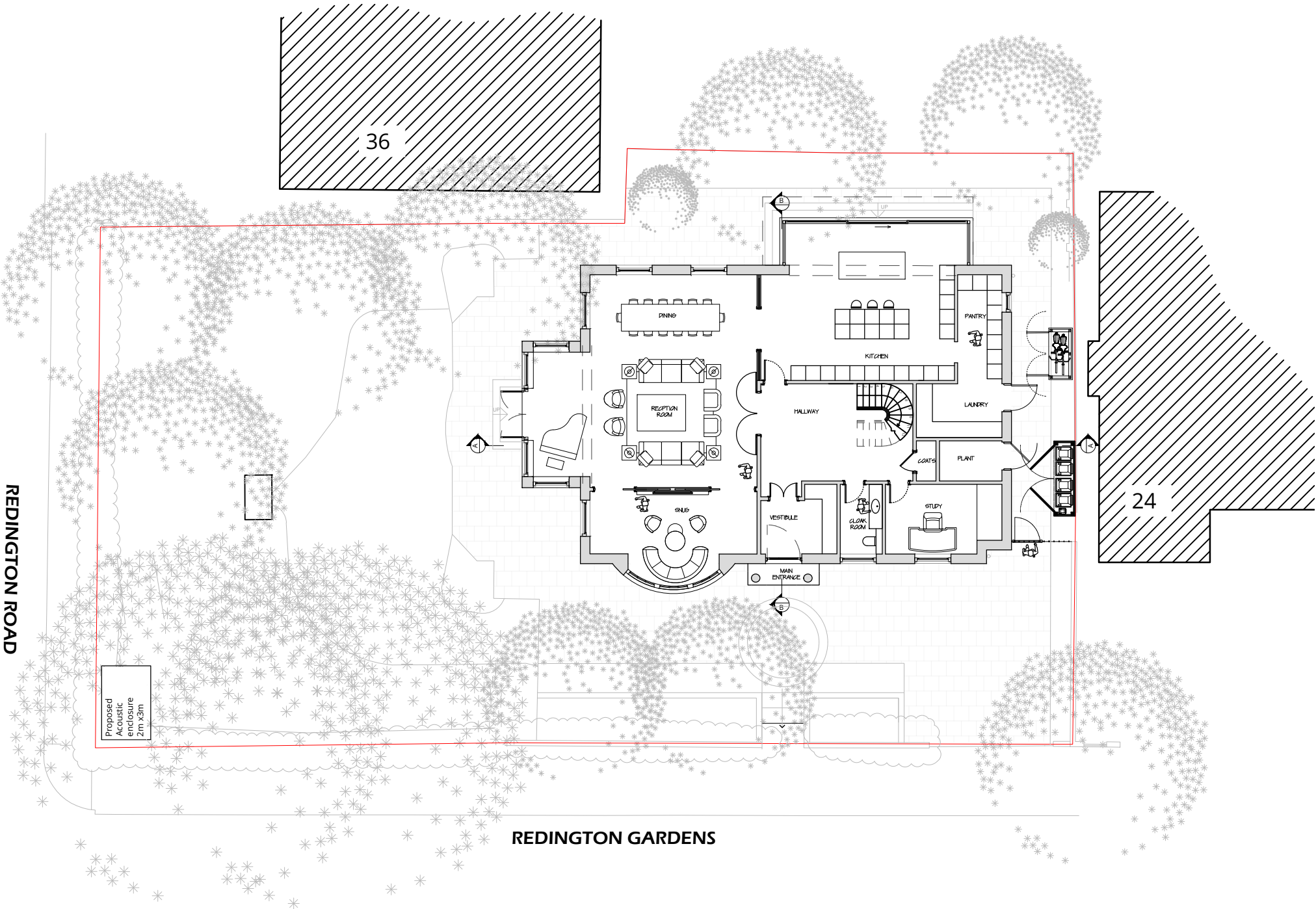
W www.wolffarchitects.co.uk
E info@wolffarchitects.co.uk

This drawing is protected under Copyright and at no time should any portion be reproduced or copied without the permission of the Architect (Design Copyright Act 1968). It must not be used for purposes other than that for which it is provided. It is supplied without liability for any errors or omissions. All dimensions to be checked on site.



KEY

proposed



PROPOSED SITE PLAN

| | | |
|------|--|----------|
| B | Revised fenestration | 11.09.24 |
| A | Site plan updated including bike storage | 05.10.23 |
| 0 | First issue. | 13.06.23 |
| Rev. | Description | Date |

Project Title
7 Redington Gardens
London NW3 7RU

Drawing Title
Proposed
Site Plan

Status
PLANNING

| | | |
|----------------|------------------|---------------------|
| Drawn by AW | Checked by NP | Scale 1:200 @ A3 |
|----------------|------------------|---------------------|

| | | | |
|---------------------|------------------|-----------------|-----------|
| Project No. 2252 | Work Stage PL | Dwg. No. 201 | Rev. B |
|---------------------|------------------|-----------------|-----------|