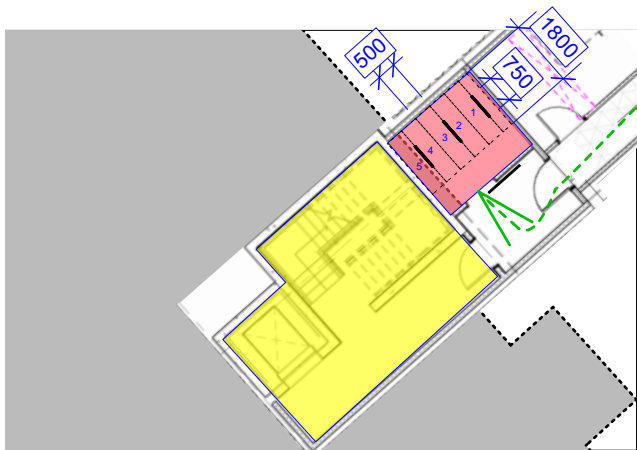
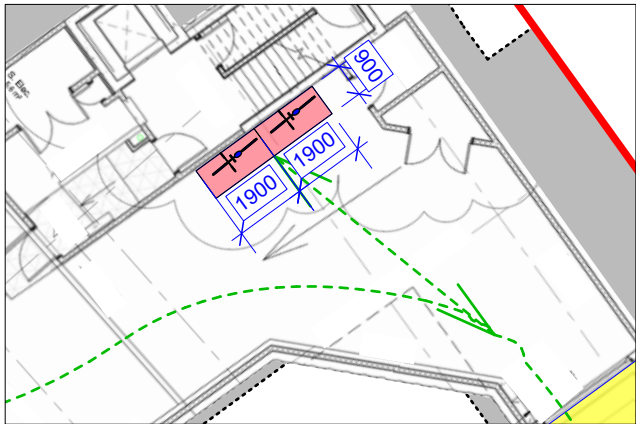
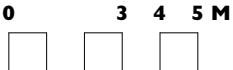


PROPOSED BASEMENT PLAN
TO SHOW CYCLE STORAGE

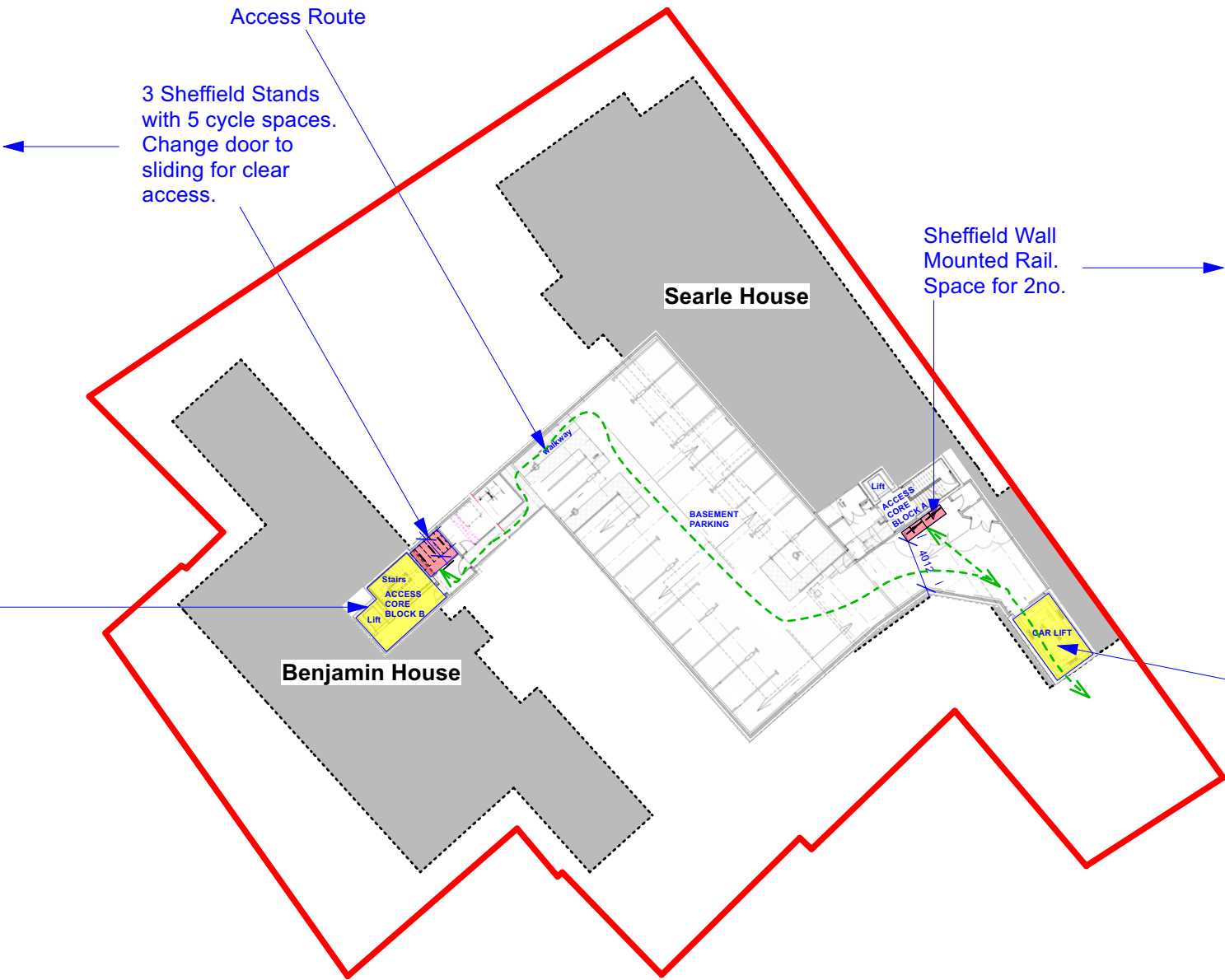
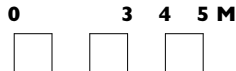
PROPOSED CYCLE STORE
7no. Long Term Secure lockable spaces.



Detail Plan View - 1:100
5no. bikes using floor mounted Sheffield hoops.
1800mm x 500mm space each.



Detail Plan View - 1:100
2no. bikes using wall mounted Sheffield rail.
1900mm x 900mm space each.



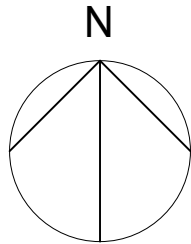
BASEMENT PLAN OVERVIEW - 1:500

Pedestrians to use circulation core after cycle storage or to retrieve cycle. This offers direct access to Block B Benjamin House.

Sheffield Wall Mounted Rail. Space for 2no.

Cycle storage access (with cycle) to be via car lift which is greater than 2mx2m and therefore adequate to accommodate the cycle and its user as Transport CPG.

In addition (after storing the cycle) access to & from the basement is possible via the existing circulation core within Block B.



Unit 25, BASEPOINT
EVESHAM
WORCESTERSHIRE
WR11 1GP
t : 020 7328 2576
Email: info@hubarchitects.co.uk

All dimensions are to be checked on site before commencement of works.
All sizes and dimensions to any structural elements are indicative only. See structural engineer's drawings for actual sizes/dimensions.
Sizes of and dimensions to any service elements are indicative only.
See service engineer's drawings for actual sizes/dimensions.
This drawing to be read in conjunction with all relevant Architect's drawings, specifications and other consultants' information.

Rev. Date. Description.

Initial.

PLANNING

Project: Regent's Gate / Guinness Court NW8
Drawing: PROPOSED BASEMENT PLAN
Scale: 1:500 @ A3 & 1:100 @ A3
DWG: 1323 - PL - 249
Date: NOV 2024
Revision: /