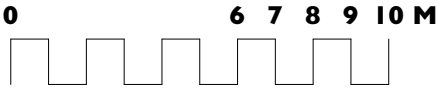
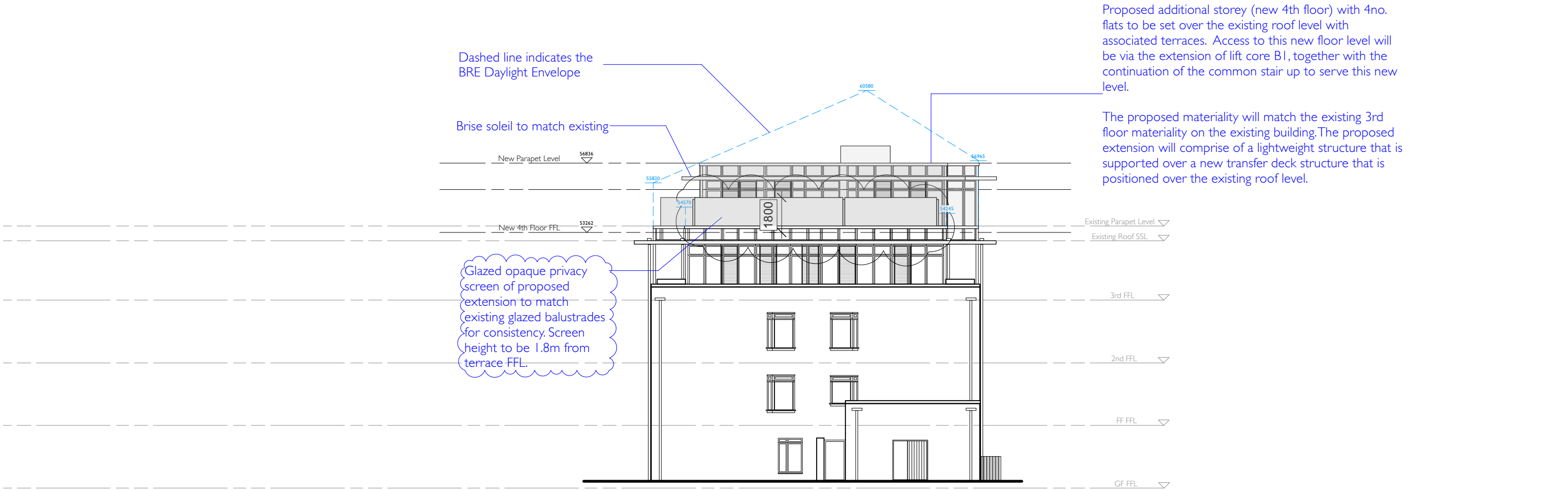


PROPOSED SOUTH EAST ELEVATION  
Block B



Unit 25, BASEPOINT  
EVESHAM  
WORCESTERSHIRE  
WR11 1GP  
t : 020 7328 2576  
Email: info@hubarchitects.co.uk

All dimensions are to be checked on site before commencement of works.  
All sizes and dimensions to any structural elements are indicative only. See structural engineer's drawings for actual sizes/dimensions.  
Sizes of and dimensions to any service elements are indicative only. See service engineer's drawings for actual sizes/dimensions.  
This drawing to be read in conjunction with all relevant Architect's drawings, specifications and other consultants' information.

Rev.	Date.	Description.
A	Aug'22	General drawing update & notes added.
B	Oct'23	General drawing update & notes added.
C	Nov'24	General drawing update, balustrade changed to privacy screen.

Initial.  
JC  
JC  
JC

PLANNING

Project:	Regent's Gate / Guinness Court NW8	Drawing:	PROPOSED SOUTH EAST ELEVATION
Scale:	1:200 @ A3	DWG:	1323 - PL - 263
Date:	APRIL 2022	Revision:	<b>c</b>