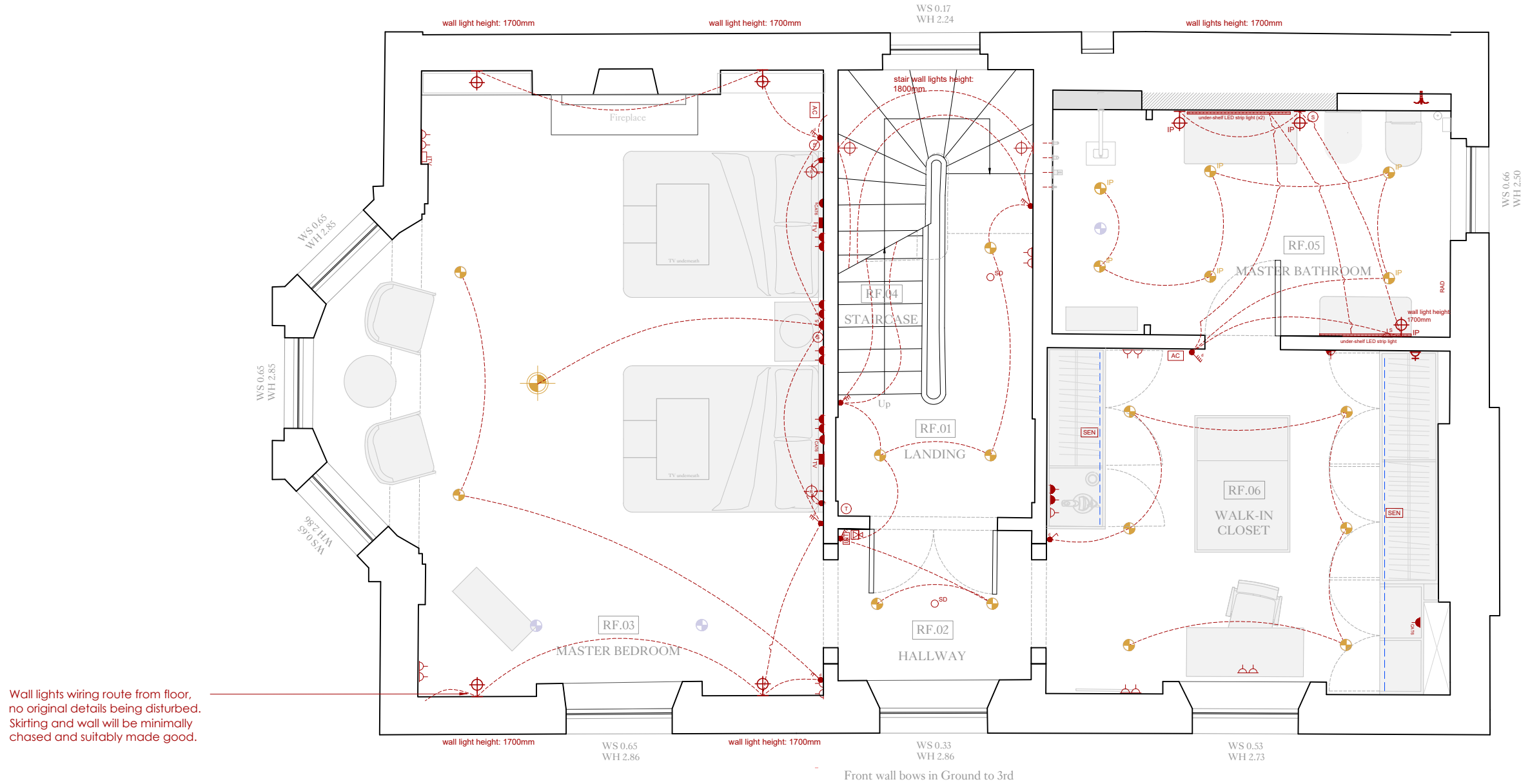


Rear wall bows out Ground to 3rd



LEGEND - LIGHTING

LEGEND - ELECTRICAL

RECESSED CEILING LIGHTS LEGEND

general notes
 THIS DRAWING IS COPYRIGHT OF CLIFTON INTERIORS LTD. THIS DRAWING MUST BE READ IN CONJUNCTION WITH THE DESIGNER'S RISK ASSESSMENT, SPECIFICATION AND ALL OTHER RELEVANT DOCUMENTATION AND DRAWINGS. CLIFTON INTERIORS LTD ACCEPT NO LIABILITY FOR ANY EXPENSE, LOSS OR DAMAGE OF WHATSOEVER NATURE AND HOWEVER ARISING FROM ANY VARIATION MADE TO THIS DRAWING OR IN THE EXECUTION OF THE WORK TO WHICH IT RELATES WHICH HAS NOT BEEN REFERRED TO THEM AND THEIR APPROVAL OBTAINED.
 DO NOT SCALE FROM THIS DRAWING OR THE COMPUTER DIGITAL DATA, ONLY FIGURED DIMENSIONS ARE TO BE USED.
 IF IN DOUBT ASK.

purpose of issue
PLANNING

notes
 * do not scale from this drawing.
 * check all dimensions on site.

revisions
 1 - Amount of recessed ceiling lights reduced, wall lights added

project name
 5 PRINCE ALBERT ROAD

drawing title
 FIRST FLOOR - SMALL POWER PLAN

scale 1:50@A3
 date 24/01/2025
 drawn by CI
 checked CI

project ref. 2401
 drawing no. 152
 revision 1

Clifton Interiors
 Est. 1986

168 Regents Park Road
 London NW1 8XN
 020 7586 5533
 www.cliftoninteriors.com