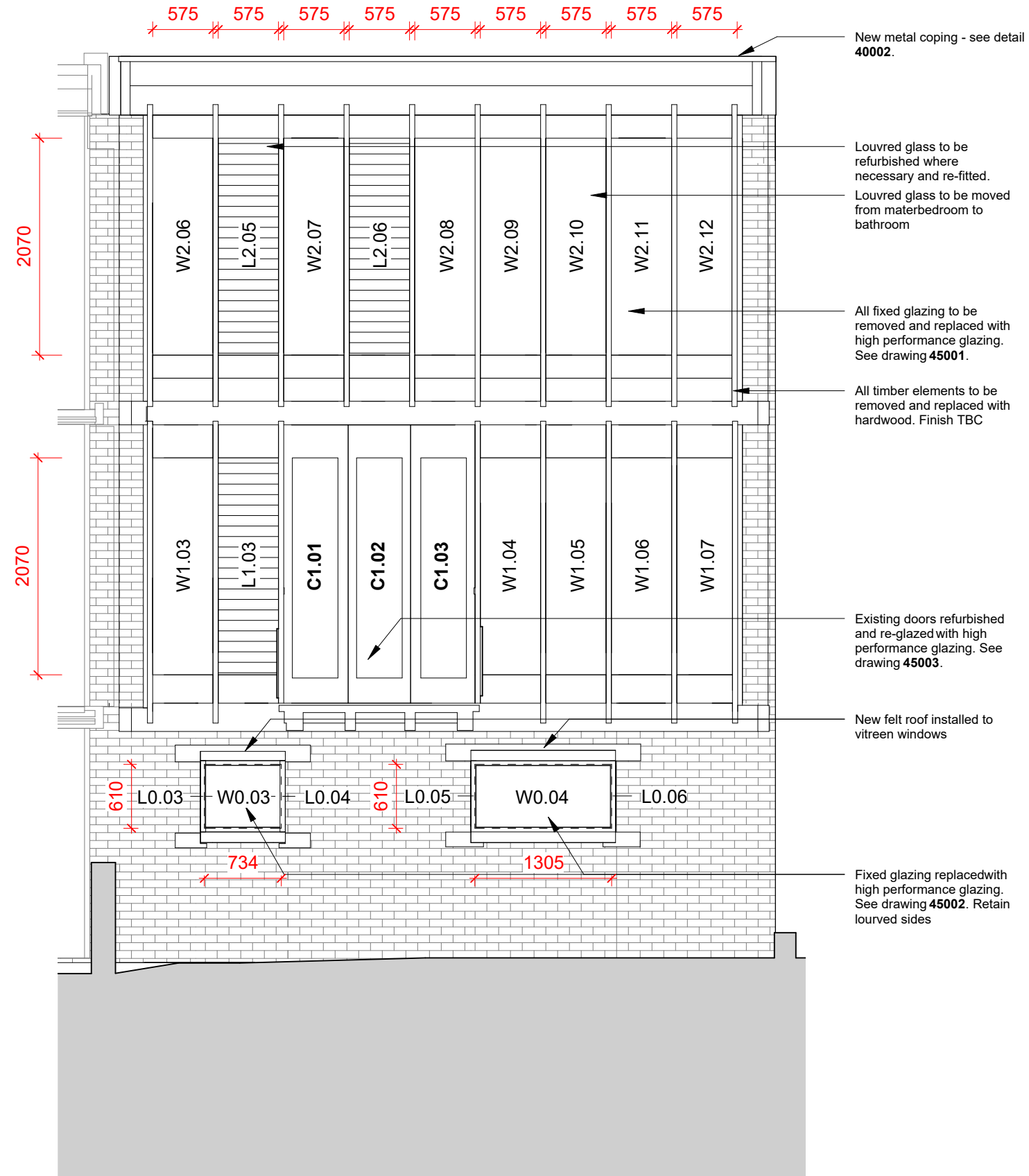


THIS IS NOT A CONSTRUCTION DRAWING, IT IS UNSUITABLE FOR THE PURPOSE OF CONSTRUCTION AND MUST ON NO ACCOUNT BE USED AS SUCH.



Facade Tag Key

W = Window

L = Glass Louvres

Timber Facade

All timber facade elements to be removed and replaced with Iroko hardwood.

Ensure detailed survey of all elements to ensure exact replica is created.

Dimensions of accessible timber elements from Six Heritage report.

- 1. Fascia board: ~255x35mm
- 2. Beading: ~35x35mm
- 3. Mullions: ~100/110x45mm
- 4. Infillboard: ~215x45mm
- 5. Facing board: ~200mm

PD1 24.01.25 Discharge of Planning Conditions

rev	date	note
-----	------	------

CODE	SUITABILITY DESCRIPTION
------	-------------------------

STATUS	PURPOSE OF ISSUE
	TENDER

3rd floor
99-101 Farringdon Road
London, EC1R 3BT
tel: 020 7096 5007
email: studio@map-architecture.co.uk

PROJECT NO: **2306**

PROJECT: 31 South Hill Park

TITLE: Rear Setting Out Elevation

CLIENT: Mark Sutcliffe

DRAWN BY SD	CHECKED BY JT	DATE 20.12.24
----------------	------------------	------------------

SCALE (@ A3) As indicated	PROJECT NUMBER 2306
------------------------------	------------------------

DRAWING NUMBER 21002	REV PD1
-------------------------	------------

Proposed Rear Elevation
1 : 50

