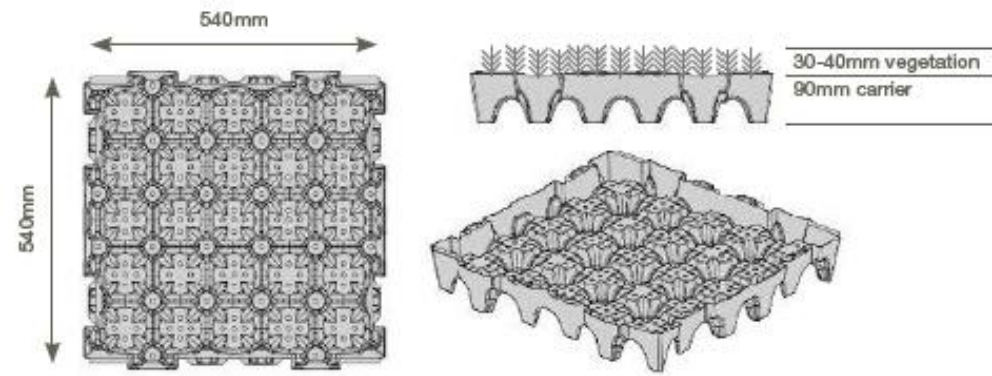


Key Facts

- Compressive strength 2.000 Kg/m²
- Water holding capacity of 20 litres/m²
- UV resistant
- Temperature range -50°C - 80°C
- Carrier material 100% Regenerated
- Polypropylene (PP)
- Carrier measures 540 x 540 x 90mm
- Drainage Surface 318 cm²/m²
- Outflow Volume 40 l/m²
- Saturated weight: Sedum 65kg/m², Others 75kg/m²
- 10 year guarantee

Your GrufeTile will be supplied with established plant coverage, growing on 60mm 100% recycled growing media. The GrufeKit has a saturated weight of 65kg per m² apart from Brown Wildflower which are 75kg per m².



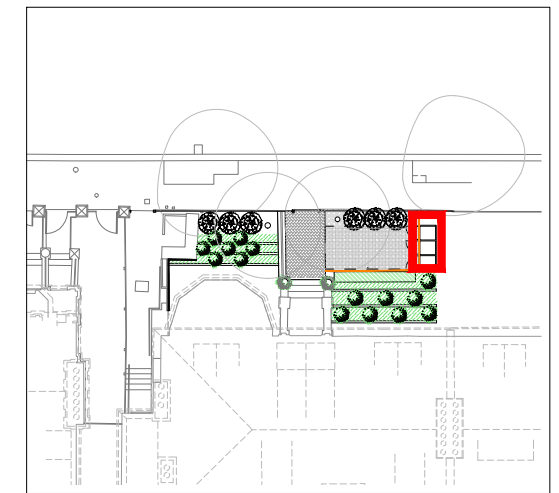
Vegetation: The Sedum GrufeTile's are pregrown with 8 -12 varieties of sedum, the Sedum & Wildflower has an additional 20-30 varieties of wildflower and meadow grasses, the Brown Wildflower has no sedum, just wildflowers and meadow grasses.

Carrier: Made from recycled HDPE plastic, and performs the following roles – a water reservoir, drainage layer, protection from excessive drying of roots from the airspace below, the cups greatly improve product handling making it easier to install



Installation: The item is equipped with a double-action coupling system: the tabs on the side of each part engage the edge in the gaps between tabs of the facing part.

Media: The media mix used is a special substrate prepared specifically for ANS, but particular mixes can also be prepared depending on the planting & project requirement.

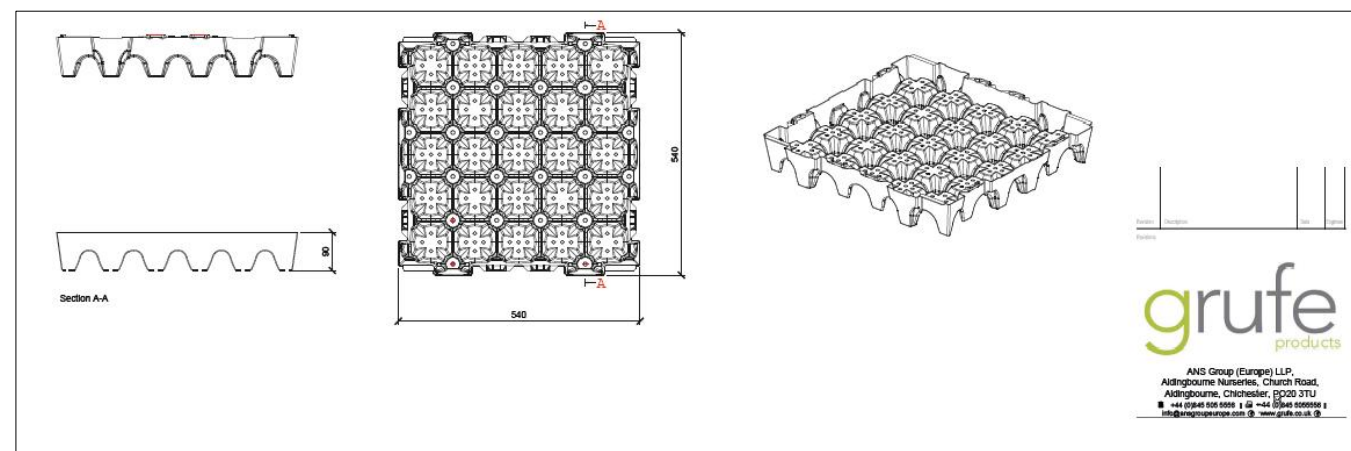


KEYPLAN

NOTE:

- Layout and levels shown are provisional for costing purposes.
- For any structural details refer to structural engineer's drawing

- ANS GrufeKit offers a 12 month warranty, no other company offers any kind of warranty on a self-install kit
- No one grows their product for longer (minimum 12-18 months)
- Competitive price versus built up system with none of the risk
- Unrivalled horticultural expertise and after-care for peace of mind on any post installation issues or queries
- Quicker to install than traditional systems 30sqm an hour can be installed by two labourers
- Almost no maintenance, especially in comparison to other systems (only needs weeding every 12 months)
- Partnered with and approved by a number of waterproofing manufacturers
- Incredibly popular alternative to traditional flat roofing, as seen on Grand Designs/Planet Earth II



REV.	STAGE 4 DESCRIPTION	10/01/2025 DATE
A		

DRAWN : VZ
 DATE: 10/01/2025
 SCALE@A3: NTS
 STATUS: STAGE 4
 DWG NO: 2030-DR-502

PROJECT TITLE
WEDDERBURN ROAD
 DRAWING TITLE
FRONT GARDEN BIN STORE
ROOFTOP VEGETATION

