

NEW DUMBWAITER BETWEEN L02 + L03
DESIGN AND ACCESS STATEMENT

21/01/2025

PURCELL 

Contact name

15 Bermondsey Square
Tower Bridge Road
London
SE1 3UN

info@purcelluk.com

www.purcelluk.com

All rights in this work are reserved. No part of this work may be reproduced, stored or transmitted in any form or by any means (including without limitation by photocopying or placing on a website) without the prior permission in writing of Purcell except in accordance with the provisions of the Copyright, Designs and Patents Act 1988. Applications for permission to reproduce any part of this work should be addressed to Purcell at info@purcelluk.com.

Undertaking any unauthorised act in relation to this work may result in a civil claim for damages and/or criminal prosecution. Any materials used in this work which are subject to third party copyright have been reproduced under licence from the copyright owner except in the case of works of unknown authorship as defined by the Copyright, Designs and Patents Act 1988. Any person wishing to assert rights in relation to works which have been reproduced as works of unknown authorship should contact Purcell at info@purcelluk.com.

Purcell asserts its moral rights to be identified as the author of this work under the Copyright, Designs and Patents Act 1988.

1.1 INTRODUCTION

This application seeks Listed Building Consent for introducing a new dumbwaiter between L02 (Room 2.26 Store) + L03 (Room 3.16) of Camden Town Hall. The proposals are associated with works granted under approval of LBC application reference 2024.1389.L + 2024.0712.P dated 24.07.24.

1.2 STATEMENT OF NEED

Under the approved scheme, the Camden Town Hall is being refurbished and upgraded to provide commercial space at basement, second and third floor levels, as well as refurbishment of the Camden Centre to provide event space.

Through design development, we have needed to introduce this dumbwaiter to futureproof and meet the client requirements. The proposal's intent and impact are explained below:

Enhanced Functionality and Efficiency:

The dumbwaiter will streamline the transportation of food, beverages, and other items between floors. This reduces the need for staff to physically move through the shared work areas, which minimizes foot traffic and potential interruptions to members' workflow. Additionally, it ensures faster service times, enhancing the user experience and maintaining a polished, professional atmosphere in the space.

Drawbacks of the Alternative:

Without a dumbwaiter, staff would need to use trays, trolleys, or manual carrying methods.

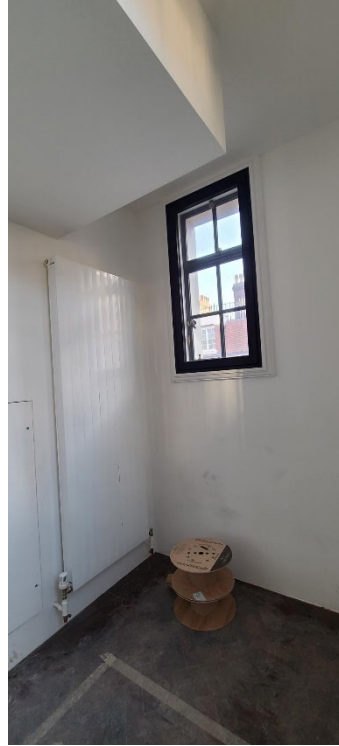
This approach introduces several challenges:

- Increased disruption to the working environment due to frequent staff movement across shared spaces.
- Greater potential for accidents, such as spills or dropped items. For example, if staff members are required to re-stock a case of water (say 12 bottles of 330ML – total weight approx. 5Kg) they would need to carry these manually through a guest space from level 2 to level 3 thereby significantly increasing the risk of injury.
- Inefficiencies in service delivery, as staff would be limited by the volume of items they can carry manually, leading to longer service times.
- By addressing these potential issues, the dumbwaiter ensures the co-working space remains a seamless and productive environment.

The impact is expected to be based on 8-12 staff members per day, 6-8 times per shift.

1.3 EXISTING CONDITION

The proposal is localised demolition of floor slabs in rooms 2.26 Store + 3.16. These rooms are back of house areas which already contain connecting risers providing vertical connection for services and goods.



Room 3.16



Room 2.26



1.4 PROPOSALS

The proposals are described in the following drawings:

- Proposed dumbwaiter between Second + Third Floor
 - o 242931-PUR-01-XX-DR-A-6411
 - o 242931-PUR-01-02-DR-A-9003
 - o 242931-PUR-01-03-DR-A-9004
 - o 242931-PUR-01-02-DR-A-9203
 - o 242931-PUR-01-02-DR-A-9204
- See below imagery and materials / specifications of the proposed trolley lift:

Trolley lift: (Concertina Door 250 & 300kg specification)

Car: Constructed from mild steel sheeting, finished in tough grey baked enamel (RAL 7038) with heavy-duty vinyl covered floor.

Speed: 0.17m/s nominal (0.15m/s for 500kg lifts).

Entrances: Landing entrances are protected by a single hinged steel door with grey baked enamel finish as standard, or optional concertina shutter leaf gate with galvanised finish. All doors are fitted to our structure and have safety locks to comply with safety regulations.

Car entrance protection: To meet the Essential Safety Requirements (ESRs) of the Machinery (Safety) Regulations, the lift car entrance is protected by a collapsible gate which protects goods from falling whilst the lift is in motion.

Entry choice: Entrances are available on any of three sides – please refer to the diagram overleaf for more information.

Control: Fully automatic push button control with call and despatch facilities at each landing entrance.

Indicators: “Lift arrival”, “lift occupied” and “lift position” indicators and audible lift arrival buzzers are fitted at each floor.

Travel: Up to 6 stops over a total distance of 18m (12m for 500kg models).

Mounting: The Trolleylift is supplied in a structure-supported frame, which is galvanized for longer life and does not need load bearing shaft walls. A solid flat base, support at each floor and at the top, together with a pre-formed lift shaft supplied by the builder, is usually all that is required.

Motor: Mounted at the top of the lift structure, the quiet motor drives a high quality reduction gearbox fitted with a traction vee-sheave. An electro-magnetic disc brake is supplied with emergency release mechanism.

Power supply: A 415V three-phase supply is required for the lift and a standard power socket within the motor compartment. Also includes VVVF drive for improved levelling (only for 250-300kg models).

Safety: Complies with the Essential Safety Requirements (ESRs) of the Machinery Directive 2006/42/EC and EN 81-3 where applicable.

Additional options include: concertina shutter leaf gates, intercom system, load weighing, stainless steel car and/or hinged doors, double hinged doors (500kg model), ramp in lieu of pit, safety gear to car and counterweight.

Choice of entrance configurations: Up to three-way entry is possible on all models: single entry, through-car and adjacent entry.

