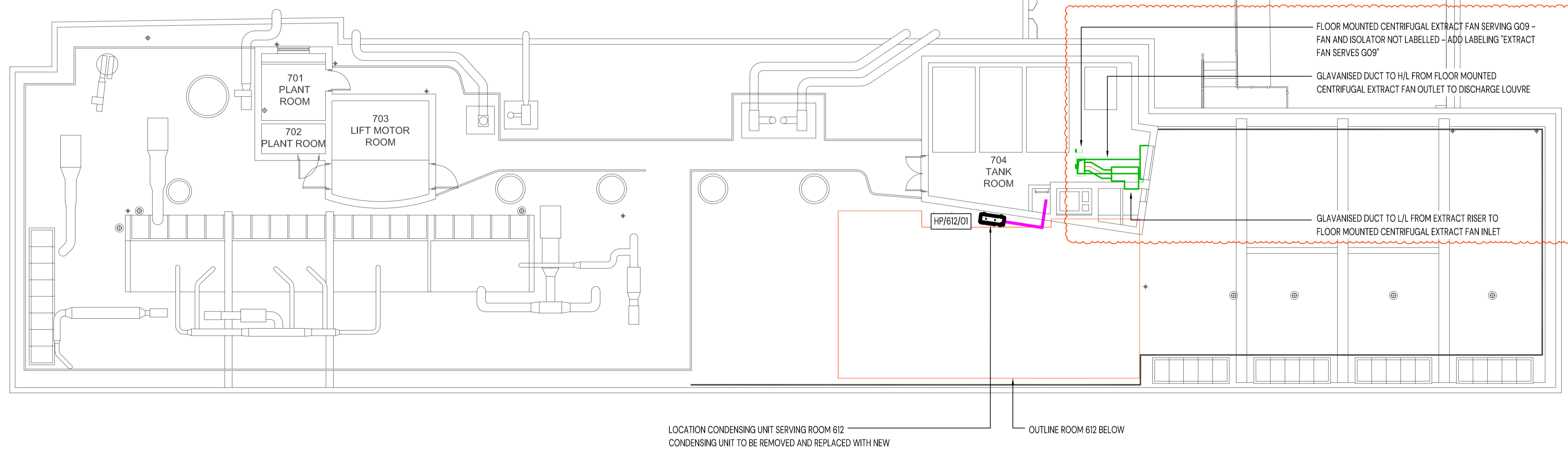
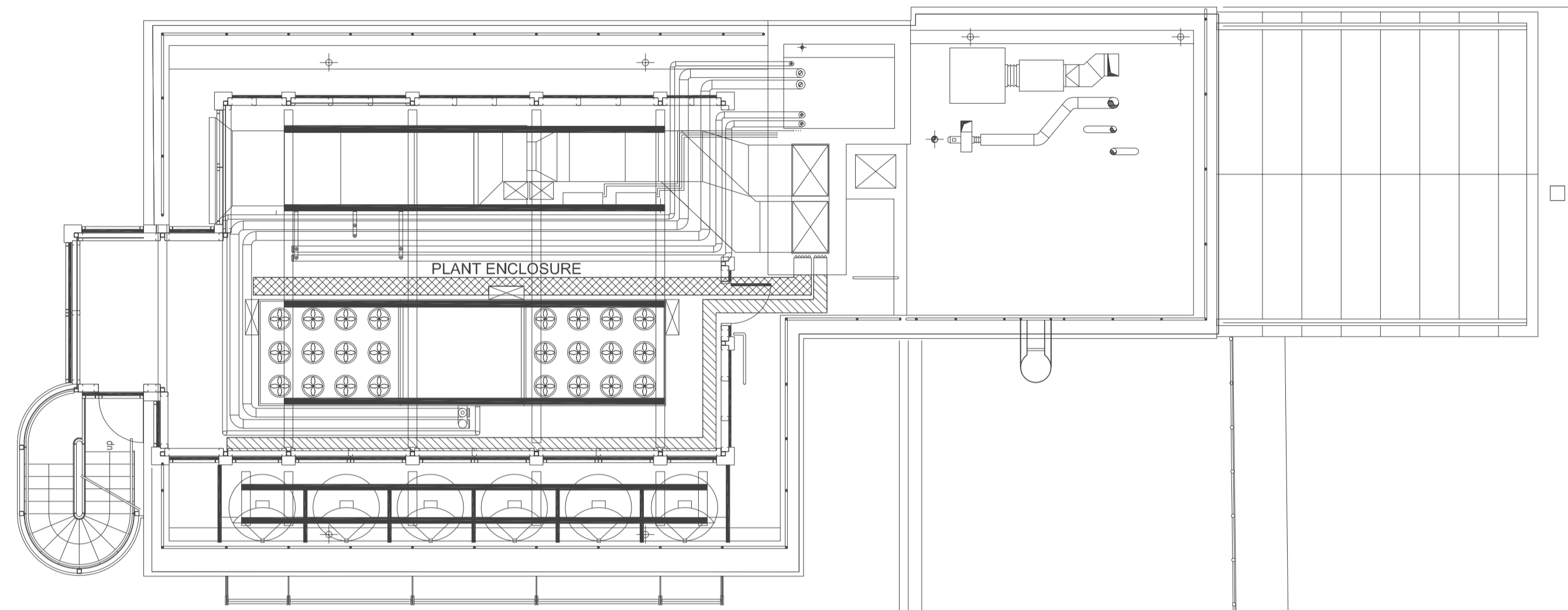


**NOTES:**

- DRAWING DETAILS THE ROOM LOCATION ON THE BUILDING FLOOR PLAN AND EXTENT OF THE MECHANICAL SERVICES WORKS BEYOND THE CLASSROOMS ON THIS FLOOR.
- FOR THE FULL SCOPE OF MECHANICAL SERVICES WORKS WITHIN THE GORDON SQUARE AND TAVITON CLASSROOMS REFER TO THE 240216/8045-8054 & 8405 - 8414 DRAWINGS.
- RECORD DRAWINGS ARE NOT AVAILABLE TO CONFIRM THE FULL EXTENT OF THE EXISTING MECHANICAL SERVICES SYSTEMS.
- UNLESS STATED OTHERWISE, ALL DIMENSIONS ARE IN MILLIMETERS.
- THE EXISTING INFORMATION CONTAINED ON THIS DRAWING HAS BEEN PRODUCED FROM A NON-DESTRUCTIVE VISUAL SURVEY AND RECORD DOCUMENTATION ONLY. IT IS THE CONTRACTOR'S RESPONSIBILITY TO VERIFY ALL INFORMATION PRIOR TO ANY SERVICES BEING ISOLATED AND STRIPPED OUT.
- THE MECHANICAL CONTRACTOR IS TO MAKE REASONABLE ALLOWANCE TO ENSURE THE MECHANICAL SERVICES IN ALL AREAS OUTSIDE THE CONTRACTED AREA REMAIN LIVE AND FULLY OPERATIONAL DURING THE WORKS.
- MECHANICAL CONTRACTOR TO IDENTIFY TO THE MAIN CONTRACTOR ALL RISERS, CEILING BOSSINGS ETC. WHICH CONCEAL SERVICE ROUTES WHICH REQUIRE TO BE OPENED UP TO ENABLE INSPECTION, SERVICING OF RETAINED SERVICES, EQUIPMENT ISOLATION AND STRIP OUT OF CONCEALED SERVICES ROUTES.
- THE MECHANICAL CONTRACTOR SHALL INCLUDE IN HIS TENDER FOR THE SAFE REMOVAL AND STRIPPING OUT OF ANY REDUNDANT SERVICES CONTAINMENT AND EQUIPMENT AND TO RATIONALISE ANY RETAINED SERVICES OR EQUIPMENT.

**LEGEND**

- ROOM TO BE REFURBISHED REFER TO I50 LAYOUTS
- MECHANICAL SERVICES WORKS OUTSIDE OF ROOM AS DETAILED ON THIS DRAWING



Rev	Date	By	Ap	Note
C02	10/07/24	FM	ML	Construction Issue - G09 Extract fan added as clouded for information - Add labeling
C01	07/06/24	FM	ML	Construction Issue
P02	07/06/2024	FM	ML	Contract Issue
P01	02/05/2024	FM	ML	Tender Issue

Drawing Title		Revision
<b>Gordon Square and Taviton Roof Proposed Mechanical Services Layout</b>		<b>C02</b>
Project Number/Drawing Number		© Copyright
<b>240216-8511</b>		
Check all dimensions and levels on site		

Do not scale this drawing

Project  
**Teaching Spaces Capital  
Refurbishment 24**

Client  
**University College London**

Date  
**26/03/2024**

Project/Issue  
**CONSTRUCTION**

Scale  
**1:100**

Drawn  
**KM**

Checked  
**TJJ**

Project Size  
**ISO A1**

File Name  
**240216-8511-C02**

**Kendall  
Kingscott**

Suite 3, Sandford House,  
1b Claremont Rd, Teddington, TW11 8DH

+44 (0)20 8943 5300  
www.kendallkingscott.co.uk



Only to be used on the site for which designed. The electronic transmission of design information contained in this drawing is carried out entirely at the User's risk and Kendall Kingscott Ltd. will have no liability for any errors or inaccuracies arising therefrom. The production of amended or updated information from the said design information by the User is entirely the responsibility of the User and Kendall Kingscott Ltd. shall have no responsibility in respect thereof otherwise.