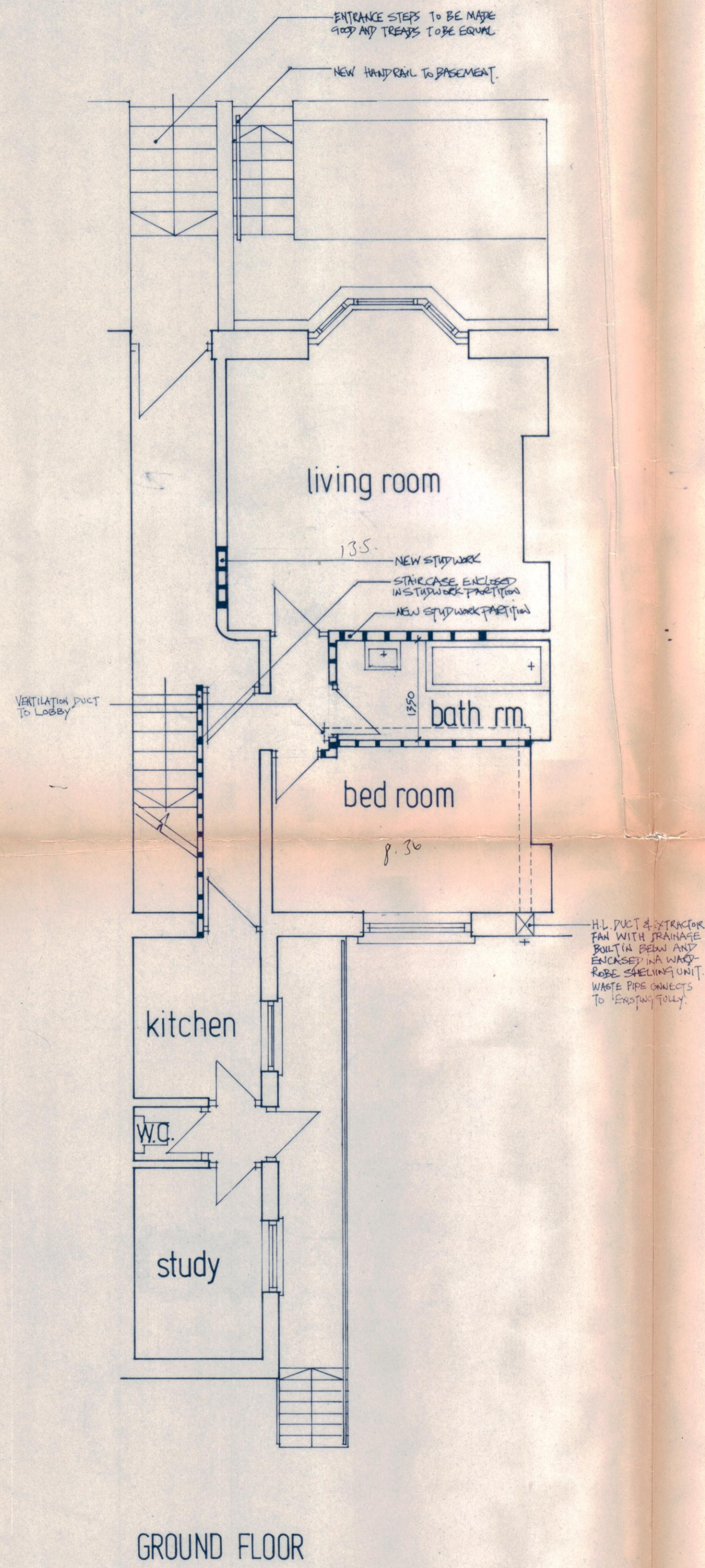
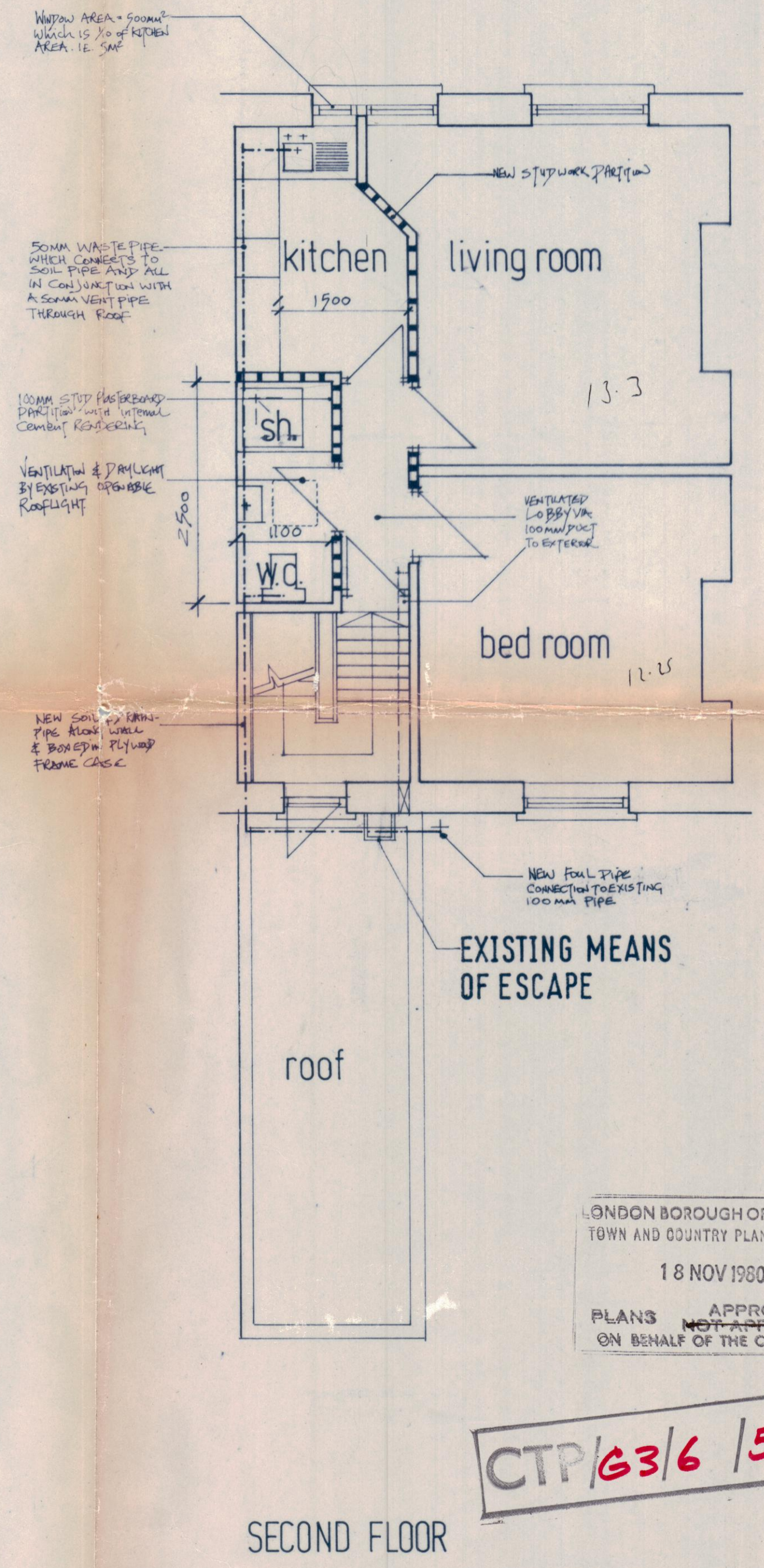


BASEMENT



GROUND FLOOR

NO ALTERATIONS TO FIRST FLOOR

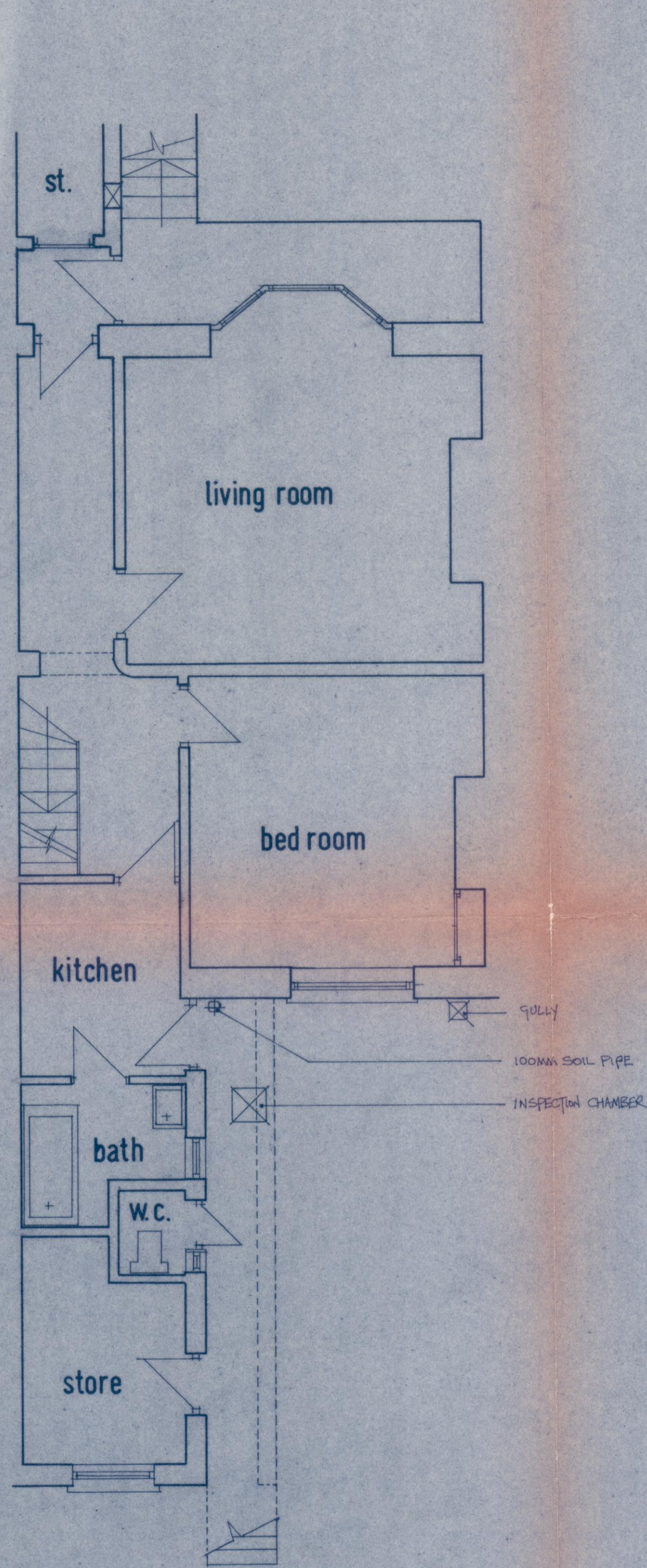


SECOND FLOOR

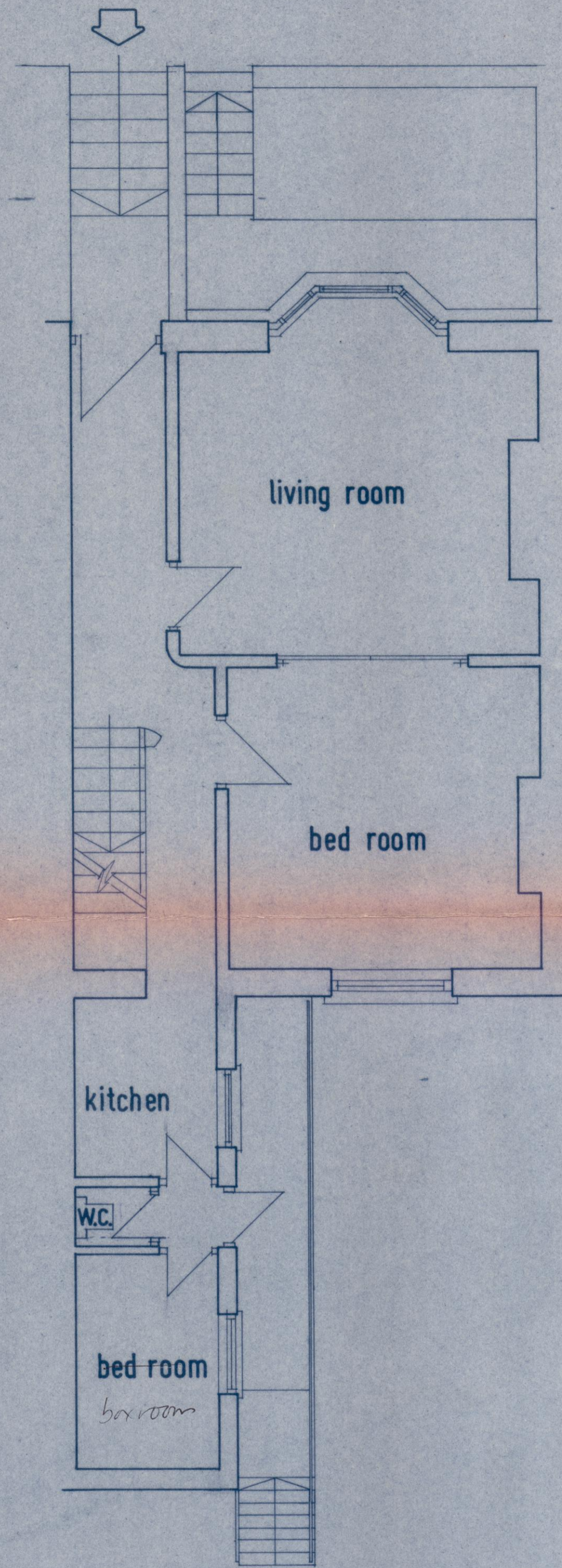
LONDON BOROUGH OF CAMDEN
TOWN AND COUNTRY PLANNING ACTS
18 NOV 1980
PLANS APPROVED
~~NOT APPROVED~~
ON BEHALF OF THE COUNCIL

CTP/63/6/58/31210

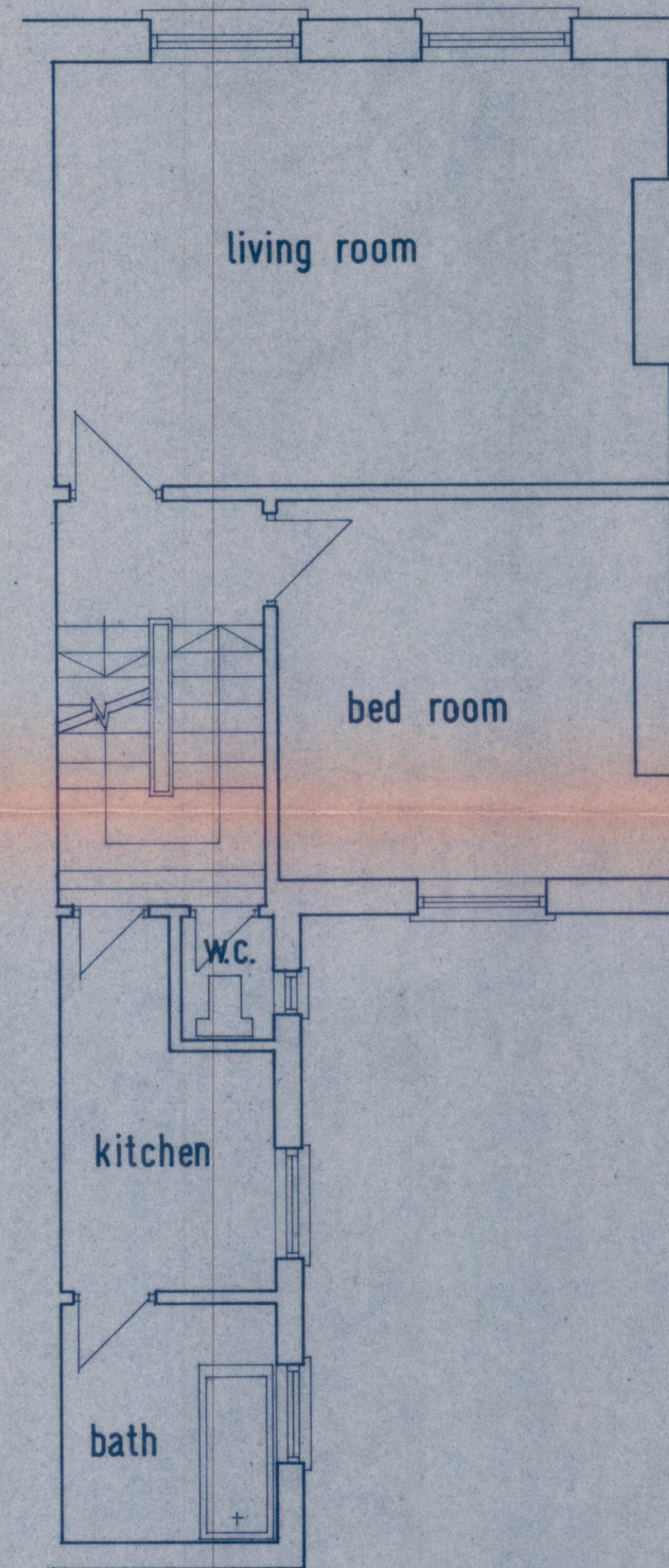
78, LOVERIDGE ROAD, N.W.6.
PROPOSED ALTERATIONS
scale: 1:50
sept. 1980.



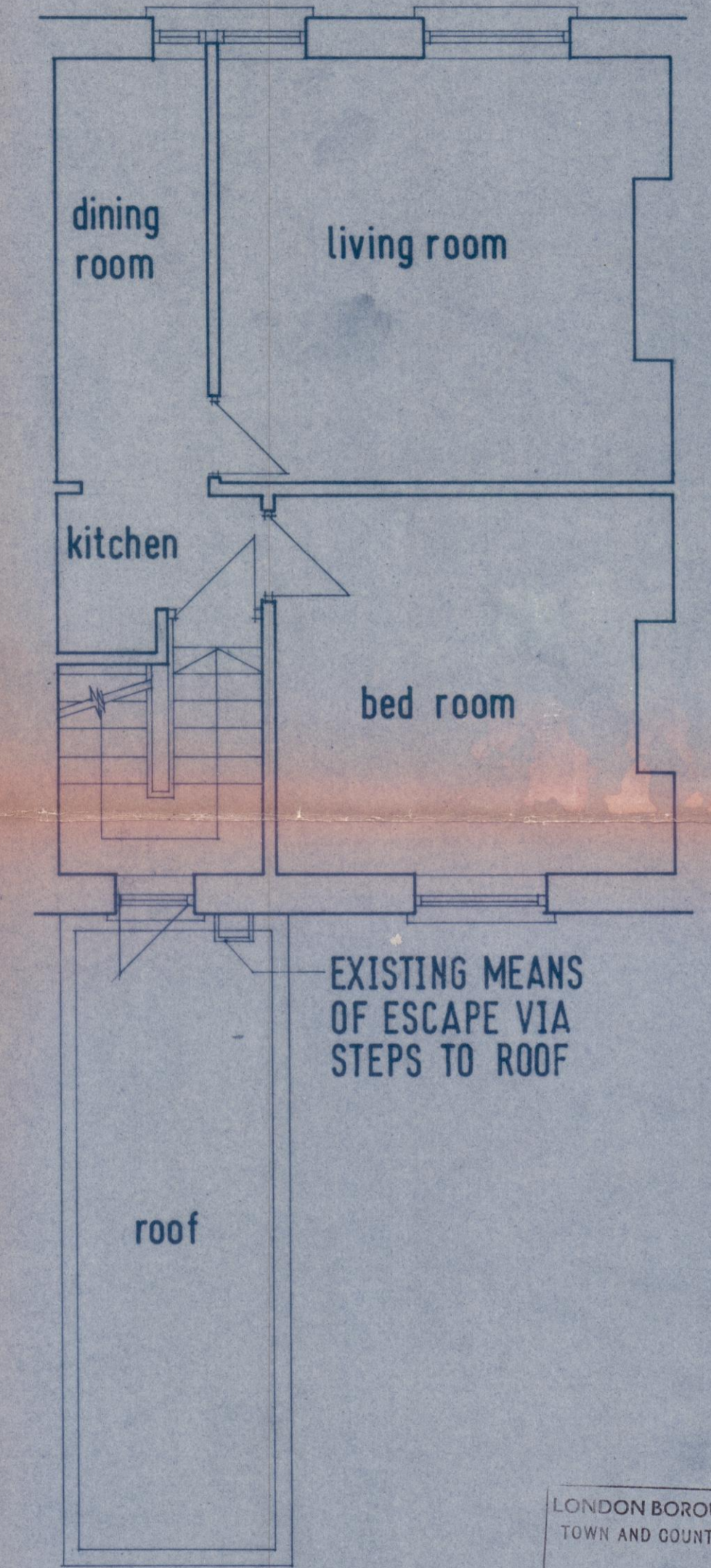
BASEMENT



GROUND FLOOR



FIRST FLOOR



SECOND FLOOR

LONDON BOROUGH OF CAMDEN
TOWN AND COUNTRY PLANNING ACTS
18 NOV 1980
PLANS APPROVED
ON BEHALF OF THE COUNCIL

CTP/G3/6/58/31210

78, LOVERIDGE ROAD, N.W.6.
floor plans as existing
scale: 1:50
Aug. 1980.