

Downtown Abbey

Museum of Time, Taste and the Artistic Touch

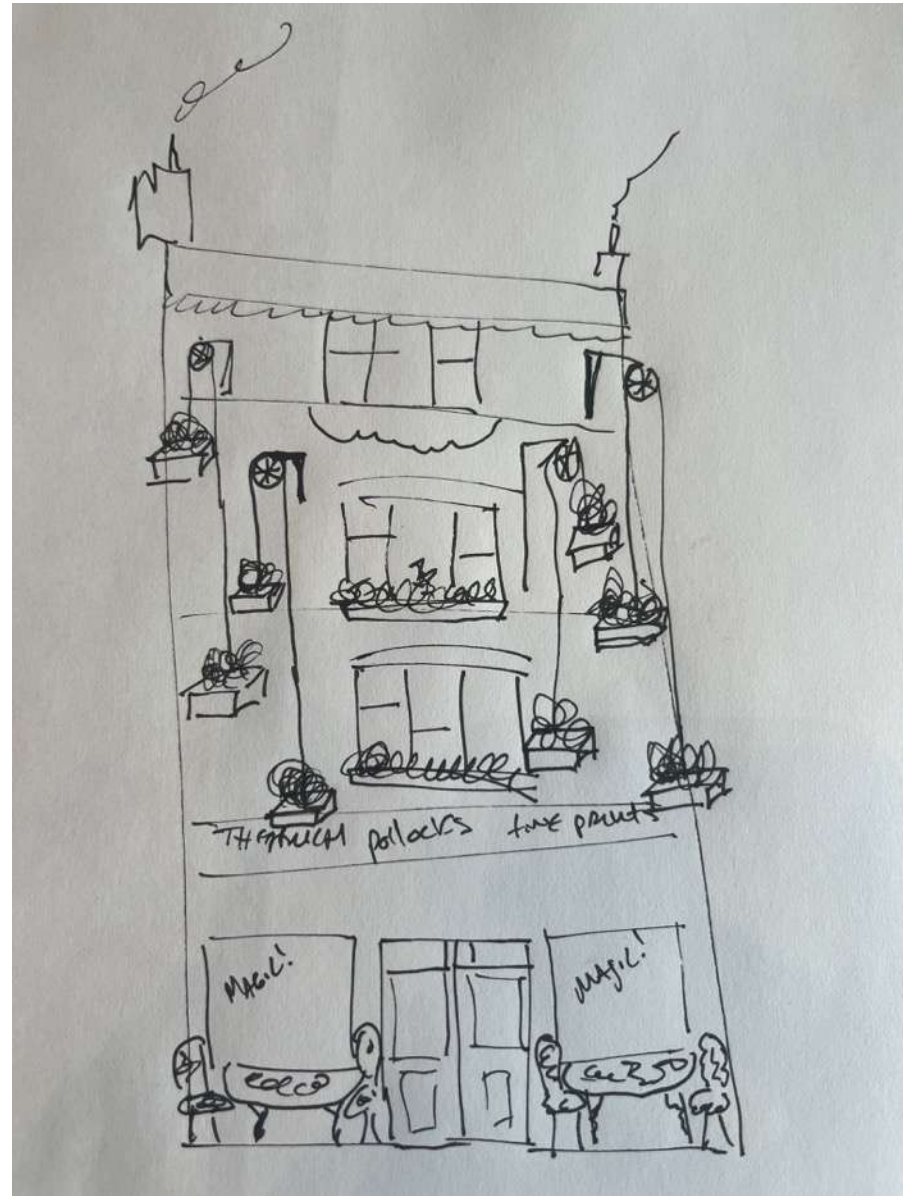
Sticks and Stones may break my bones..

But tea will always save me..

The hustle and bustle of Tea Towers Dock.

Crates of tea plants, Camelia, Chamomile, Lavender and Mint.

Lowered by ancient pulleys, watered, tended and plucked for the day ahead.





The jangle of keys. The ting of the bell above the door. The Arger is lit. The smell of baking drifts down the street as the outdoors tables lift up, the awnings come down and another glorious day begins.

Wrought Iron round table cut in half as fold up tables, small canopies over the two side windows. Iron outdoor chairs. Warehouse pulleys raise the boxes of herbs and teas growing.



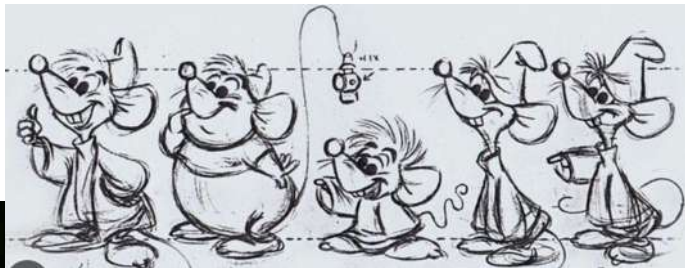
The First Glorious Window Display

The Teapot fountain. Continuously pouring heavy scented tea. The overnight workers of realistic ceramic mice scurry up ladders, dishcloths in hand, ceramic half eaten cakes. Towers of tea cups and saucers. Clean clean clean they sing as the pile of never ending washing up never ends. Steam and soap suds effects also.

At the end of each 'season' the props and set is raffled/auctioned/sold.







The Shop Floor

Fixed high, towers of old cabinets beautifully laden with treasures and lit from inside.

An urn steams hot water . Tea cups and saucers stacked behind the counter. Boxes of tea, fresh cakes. Prints and books carefully displayed.

3 small tables of 2-3.

An old ladder to reach the objet above.

Pots of tea. Cafetiere's of coffee.

The dumb waiter arrives from the Pantry, laden with cakes before a pot of Earl Grey is loaded to be delivered upstairs.





Cake Seasonal. Homememade.

Victoria Sponge
Halloween
Christmas Puddings,
Mince Pies Gingerbread
Easter Eggs. Homemade
Ice cream. Valentines



Tea's!

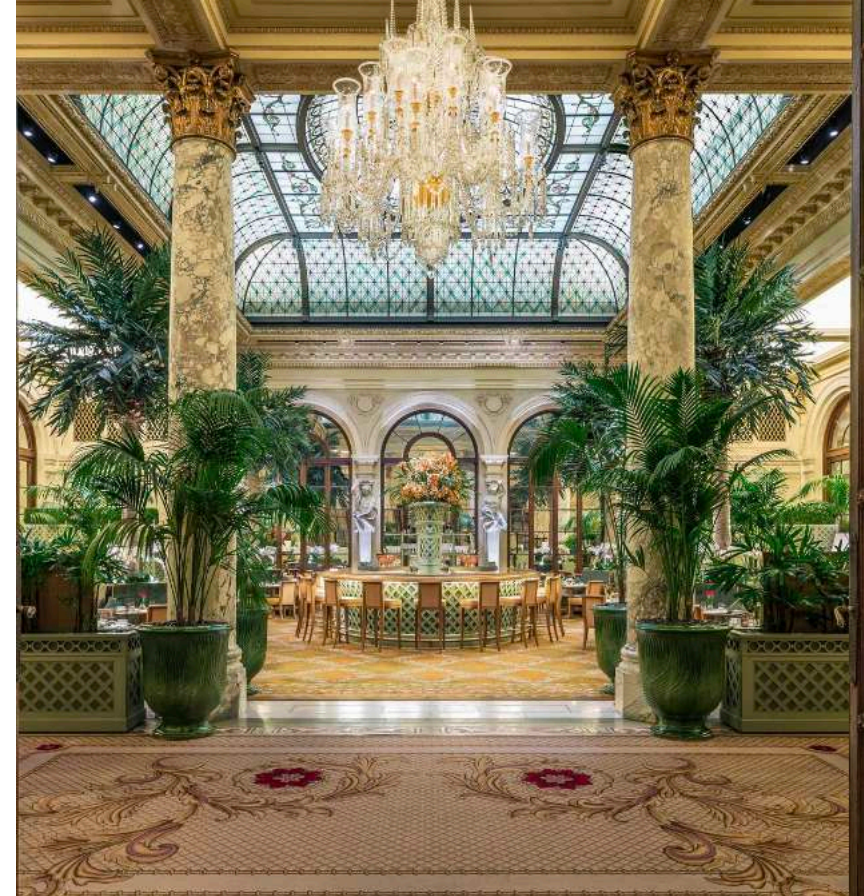
- Earl Grey
- Darjeeling
- Green Tea
- Lapsang Souchong
- Chai Tea
- Builders Tea

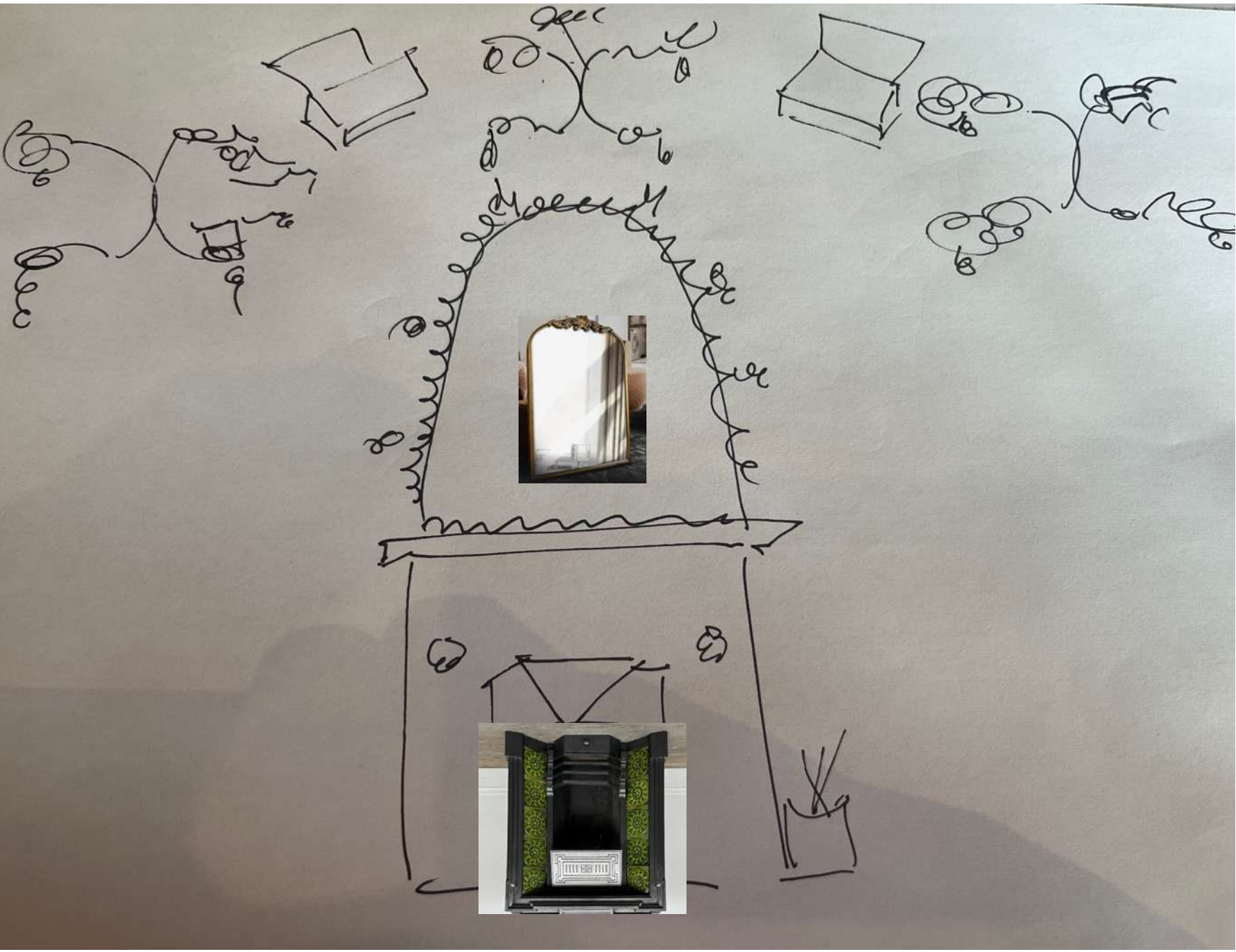


The Waiting Room



An exquisite room of splendor but fun and playful too. Walls are lined with lots and lots of mirrors. Palms and Rattan furnishings. Leather luggage flies in the air spilling silverware, crystal glasses which form a central chandelier. The cubby hole is leather lined from old luggage like paneling with a banquet seat. Table cloths are made from old shirts, a central white linen square for ease of changing. A Victorian fireplace installed, with fake fire. Keep black walls. Add golds and greens. Travel theme. Changed yearly perhaps.





Chandelier Material





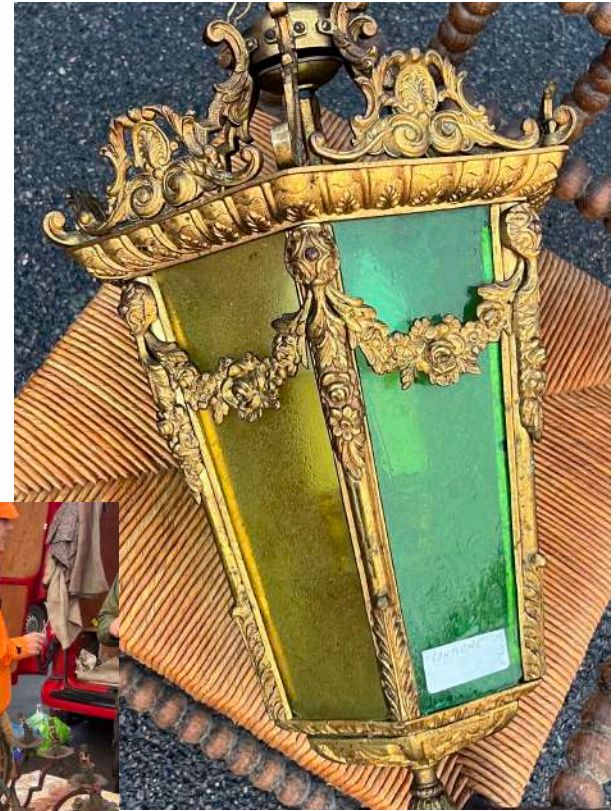
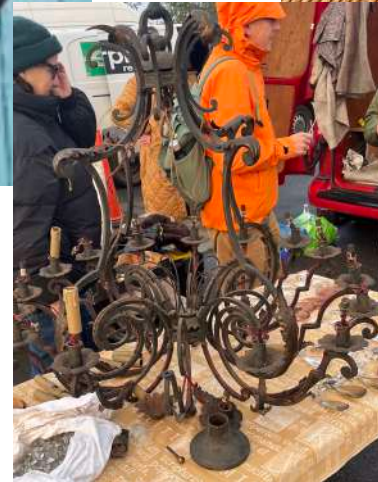
Wall lining with old suitcases to create paneling in cubby seating hole. Perhaps old train seats used.



Seating and Upholstery Ideas. Tweed, Old Shirts. Leather luggage. Knitwear.



Wall clock. Coat Stands. Lighting



The Pantry



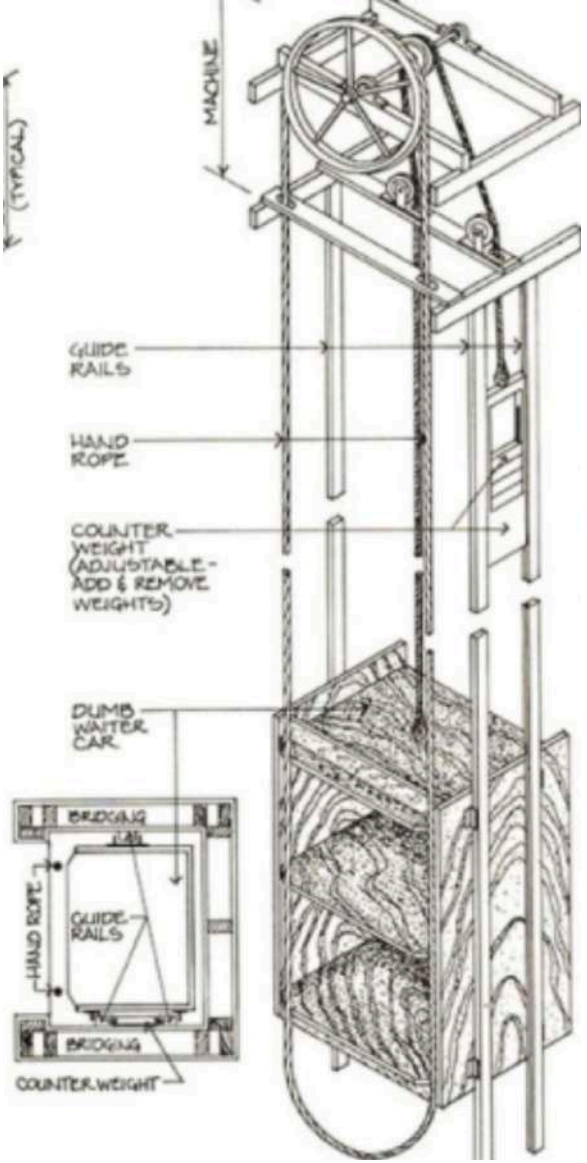
The Heart of Everything. A place of creation. Of learning. The Arger settles into the fireplace and ignites a thousand stories told by the slices of cake she produces. The giant wooden table surrounded by wooden stools where the education ensues. Sacks of flour. Trays of eggs. Copper pans. Enamel trays. Plants and herbs hang.



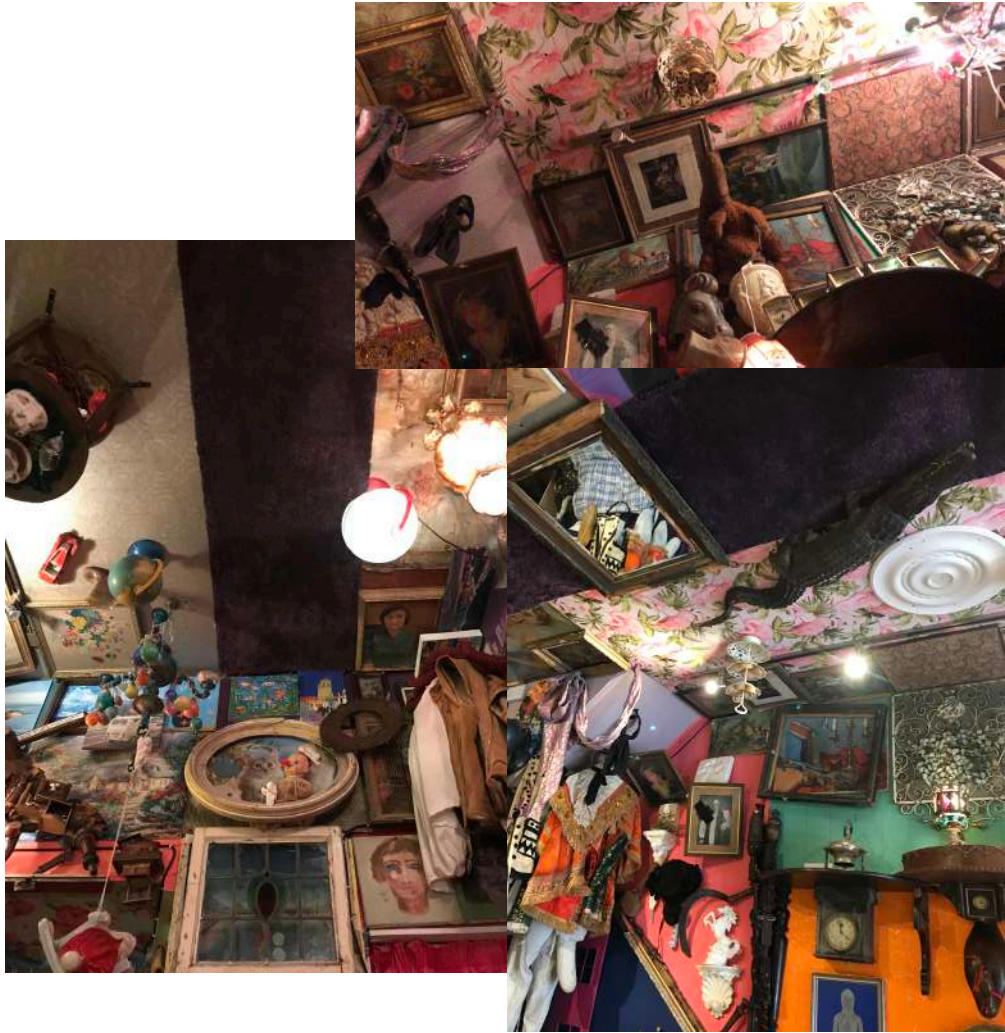


The Dumb Waiter

Running from the pantry up to the 4th floor. Delivering breakfast to the rooms, tea and cakes to the Tea Room saving on staff, legs and adding conversation piece.

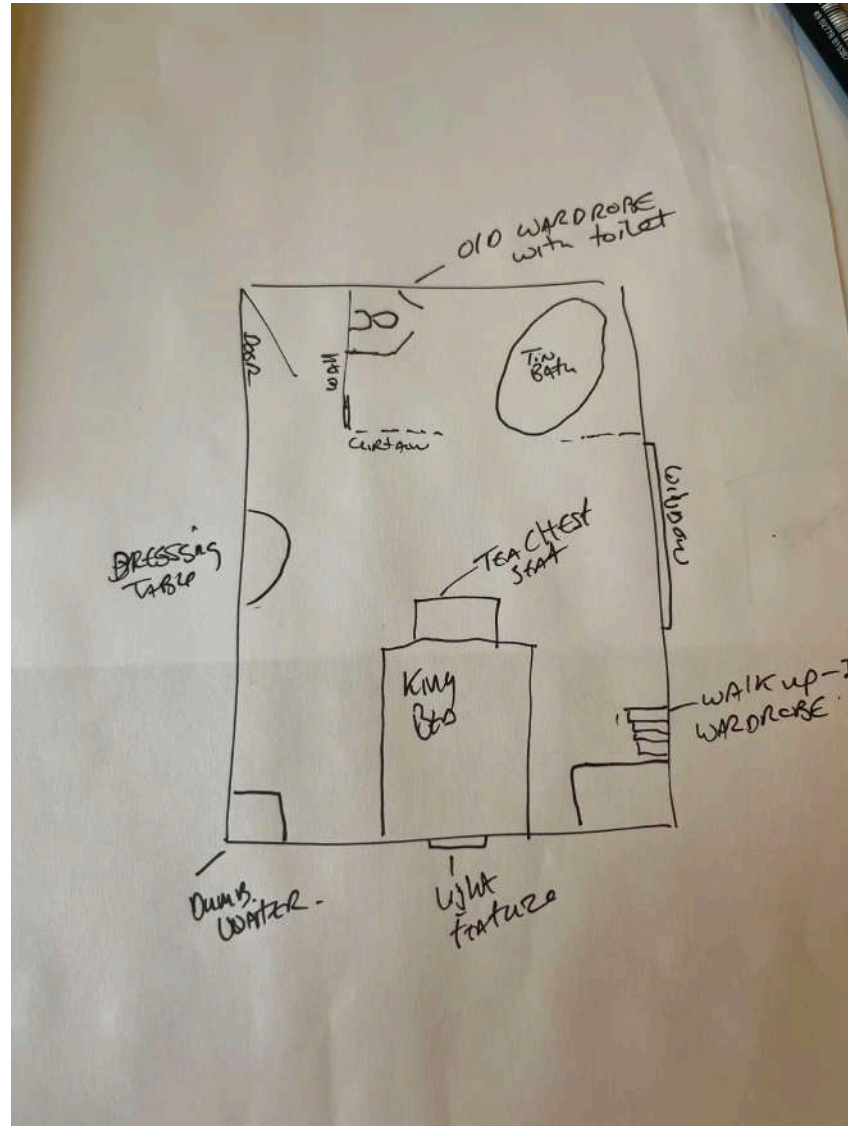


The Stairwell of Art and Objet



The Double Room.

Romantic and Cosy.
Partition wall made of old doors.
Toilet inside old wardrobe. Tin freestanding bath/shower. Old fittings.
Draped off with curtains.
King antique mahogany bed.
Tea chest/Seat/storage
Walk up/in wardrobe feature utilising existing stairs.
Wonderful lighting. Chandelier and wall lights. Dressing table. Light feature in wall cavity.





墨绿色



vidaXL Vintage Treasure Chest
66x38x40 cm,



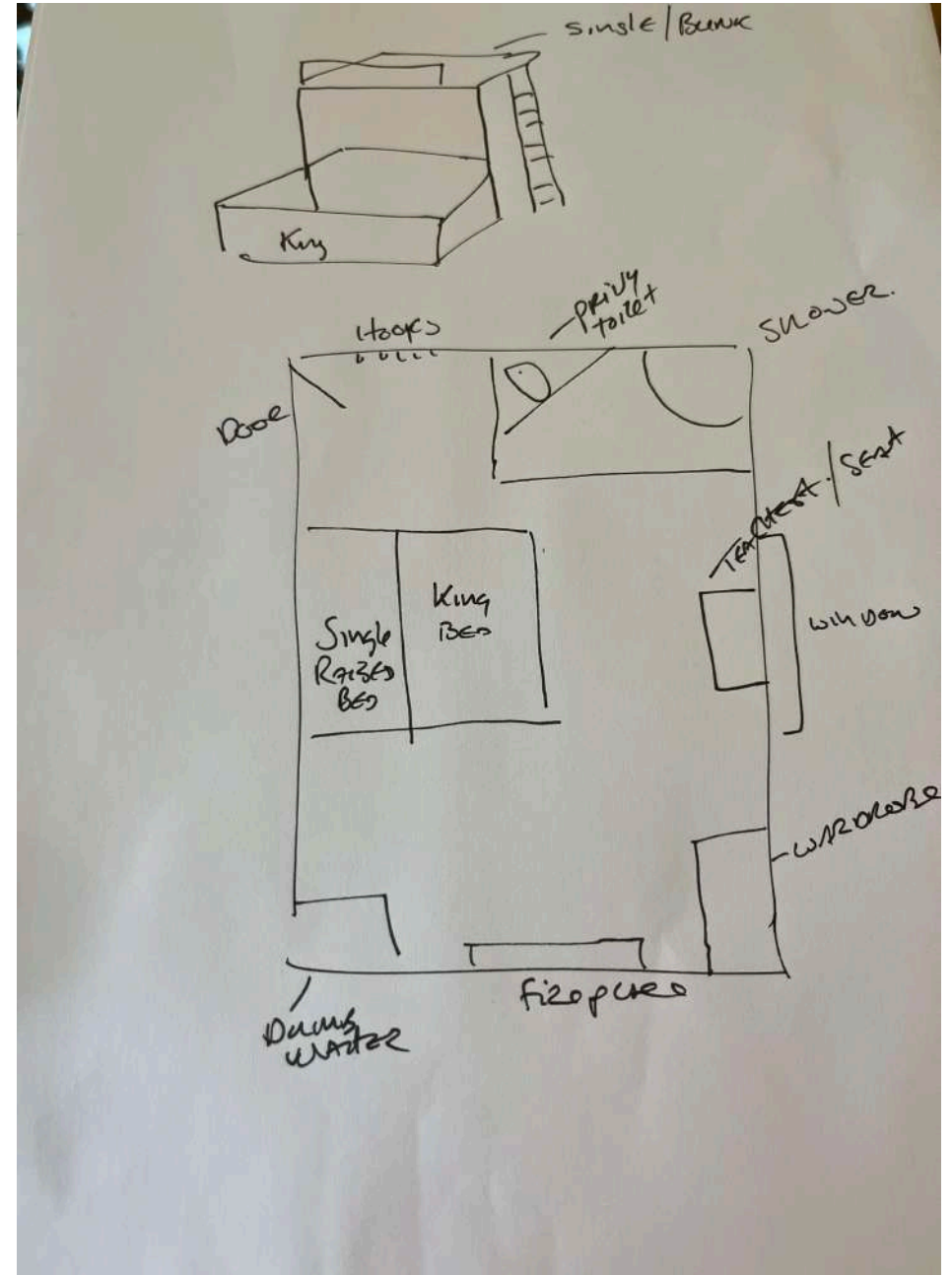
The Family Room

Partition wall created for toilet/tiled shower room. Old raised cistern used. Wooden Victorian style privy.

Quirky bed with top to toe single bunk for kids. Draped like Kings Royal 4 poster.

Tea Chest Storage, seat. Fireplace.

Wardrobe/ storage.





11 people have looked at this in the last couple of hours.



Tony Hornecker

Tony Hornecker is an internationally renowned artist and set designer. His [installations](#) have been staged in institutions such as [The Royal College of Art](#), [The Royal Opera House](#) and [The Architecture Foundation](#) in London. His work incorporates a vast variety of mediums, from the written word to sculpture, architecture and performance. His love of found materials and how to take them, and the viewer on magical journeys into his imagination has gained his work a loyal following.

