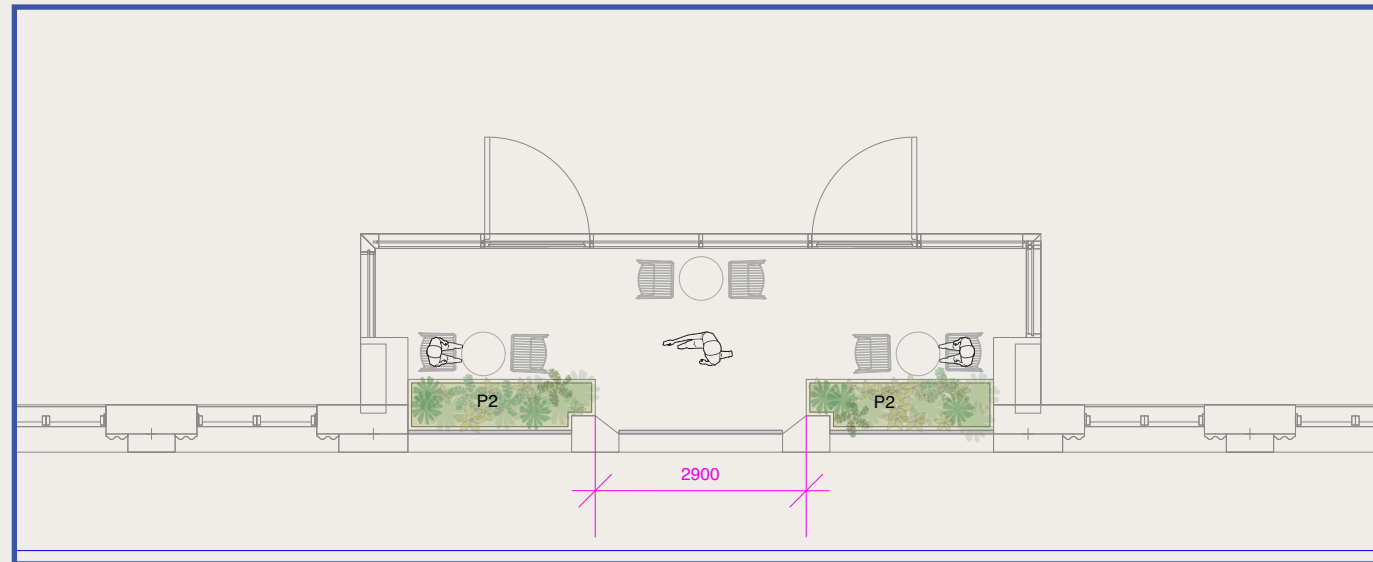
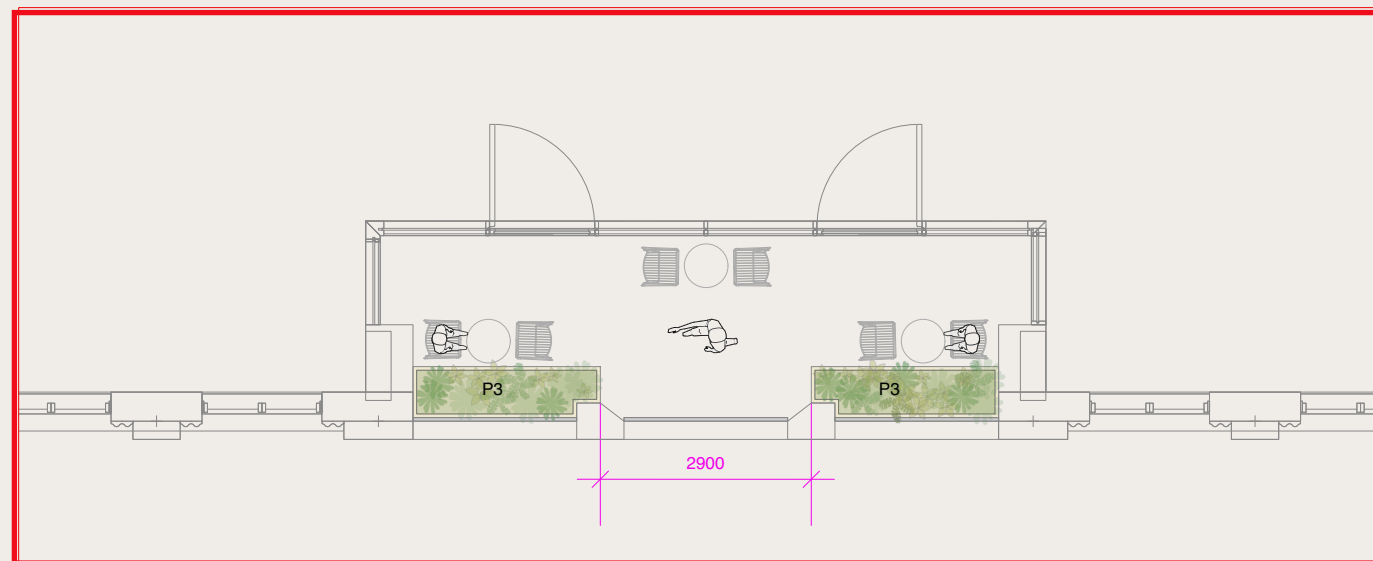


# 01. 2nd & 3rd Floor Winter Garden Terraces



2nd Floor



3rd Floor

Second Floor Winter Garden Planter Schedule		
Planters	Dimensions	Quantity
P2	1.737 sq.m x 800mm(H)	2

Second & Third Floor Planting Specification	
Species	Type
<i>Ilex crenata</i> clipped dome	Shrub
<i>Liriope muscari</i> 'Monroe White'	Perennial
<i>Vinca minor</i> 'Atropurpurea'	Perennial
<i>Convallaria majalis</i>	Perennial
<i>Polygonatum multiflorum</i>	Perennial
<i>Hosta</i> 'Sum and Substance'	Perennial
<i>Rogersia aseculifolia</i>	Perennial
<i>Euphorbia amygdaloides</i> robbiae	Perennial
<i>Hedera helix</i> "Shamrock"	Climber
<i>Anemone x hybrida</i> 'Honorine jobert'	Perennial
<i>Narcissus</i> 'Actaea'	Bulb
<i>Allium</i> 'Purple Sensation'	Bulb
<i>Paradisea lusitanica</i>	Bulb
<i>Dryopteris felix mas</i>	Fern
<i>Polypodium vulgare</i>	Fern
<i>Polystichum munitum</i>	Fern
<i>Bergenia Silberlicht</i>	Perennial
<i>Asplenium scolopendrium</i>	Fern
<i>Blechnum spicant</i>	Fern



Key Plan



Key Plan

Third Floor Winter Garden Planter Schedule		
Planters	Dimensions	Quantity
P3	1.737 sq.m x 800mm(H)	2

## Planting Strategy

Though mostly south facing, these terrace spaces will be shaded spaces, receiving no rain fall, and very low light levels to the back. All planted areas will be irrigated, and species are selected for their robustness and shade tolerance. All planters will incorporate drainage holes 150mm up from the base, on the non-visible side of the planter.

The plant mix includes a combination of evergreen shrubs, robust flowering perennials, and spring / summer flowering bulbs. There will be a strong evergreen structure all year, and a variety of leaf textures including a high proportion of ferns as illustrated adjacent.

A small form of ivy is used to trail over the front edge of the planters.

Growing medium depth will be 500-600mm, in planters that are 900mm high against the parapet. Void former will be used in the base of the planter.

Planters will incorporate lighting and seating in places, and be formed from glass reinforced plastic (GRP) troughs or powder coated metal, subject to detailed design.



*Polystichum munitum*



*Asplenium scolopendrium*



*Polystichum setiferum*



*Polypodium vulgare*



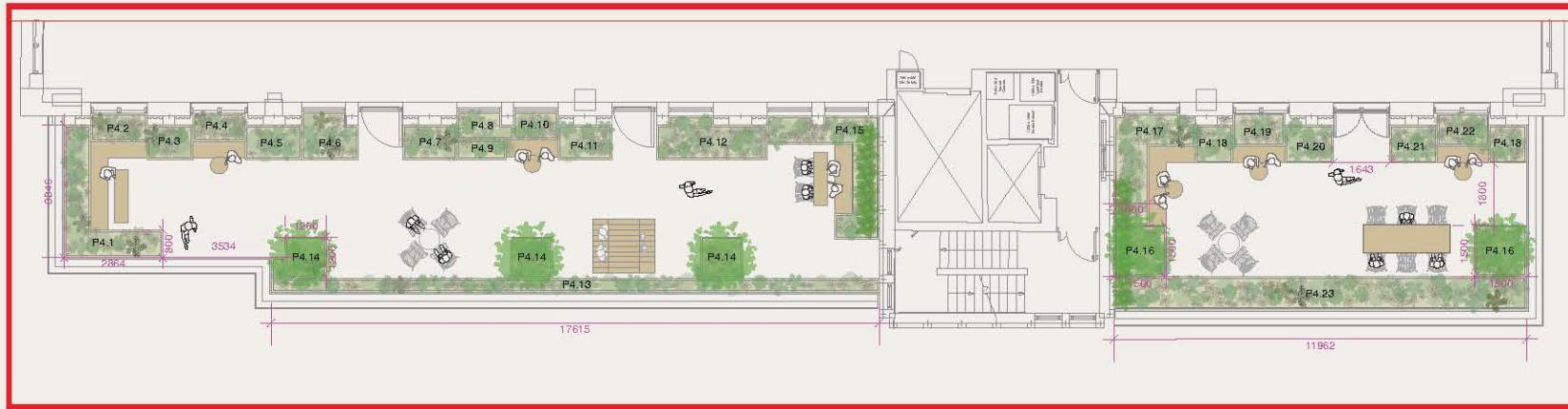
*Dryopteris felix mas*



*Blechnum spicant*



## 02. 4th (4.1 & 4.2), 6th Floor Terraces



4th Floor

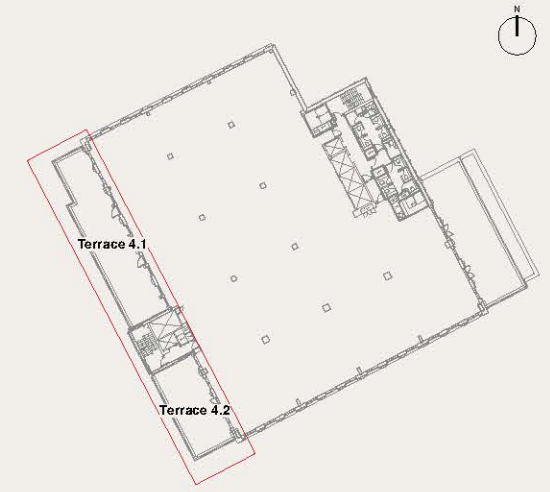


6th Floor

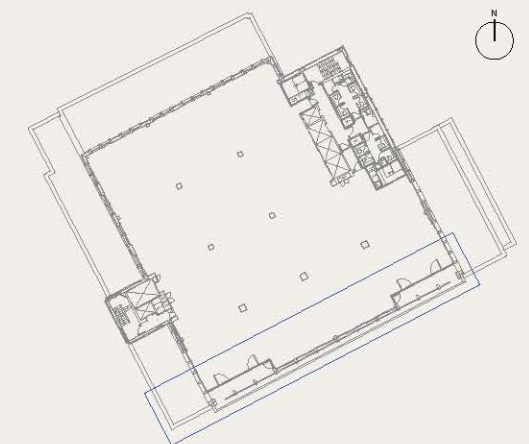
Fourth Floor Planter Schedule		
Planters	Dimensions GRP	Quantity
P4.1	4.625 sq.m x 800mm(H)	1
P4.2	1648 x 818 x 400mm(H)	1
P4.3	1325 x 1000 x 600mm(H)	1
P4.4	1500 x 818 x 600mm(H)	1
P4.5	1632 x 1000 x 600mm(H)	1
P4.6	2.157 sq.m x 400mm(H)	1
P4.7	1576 x 1000 x 400mm(H)	1
P4.8	1.201 sq.m x 600mm(H)	1
P4.9	1428 x 582 x 400mm(H)	1
P4.10	1288 x 818 x 600mm(H)	1
P4.11	1558 x 1000 x 400mm(H)	1
P4.12	3.532 sq.m x 400mm(H)	1
P4.13	7.286 sq.m x 800mm(H)	1
P4.14	1200 x 1200 x 800mm(H)	3
P4.15	5.14 sq.m x 600mm(H)	1
P4.16	1500 x 1500 x 800mm(H)	2
P4.17	3.774 sq.m x 600mm(H)	1
P4.18	1100 x 1100 x 600mm(H)	2
P4.19	1500 sq.m x 600mm(H)	1
P4.20	1400 x 1100 x 400mm(H)	1
P4.21	1360 x 1100 x 400mm(H)	1
P4.22	1500 x 950 x 600mm(H)	1
P4.23	11962 x 932 x 800mm(H)	1

Sixth Floor Planter Schedule		
Planters	Dimensions	Quantity
P6.1	21.606 sq.m x 800mm(H)	1

Planting Specification	
Species	Type
Rosmarinus "Miss Jessops Upright"	Shrubs
Rosmarinus postratus	Shrubs
Laurus nobilis	Shrubs
Pinus mugo 'mops'	Shrubs
Hydrangea 'Limelight'	Shrubs
Escallonia laevis	Shrubs
Taxus baccata	Shrubs
Ilex crenata	Shrubs
Magnolia stellata	Shrubs
Skimmia x confusa 'Kew Green'	Shrubs
Polystichum munitum	Evergreen ferns
Blechnum spicant	Evergreen ferns
Acanthus spinosa	Robust perennials
Miscanthus sinensis	Robust perennials
Geum 'Totally Tangerine'	Robust perennials
Geranium rosanne 'Jolly Bee'	Robust perennials
Libertia grandiflora	Robust perennials
Syrinchium striatum	Robust perennials
Anemone x hybrida 'Honorine jobert'	Robust perennials
Lavandula stoechas	Robust perennials
Stachys lanata	Robust perennials
Oenothera lincheimeri	Robust perennials
Salvia nemerosa x superba Pink	Robust perennials
Nepeta 'fasennii'	Robust perennials
Liriope muscari 'monroe white'	Robust perennials
Allium 'purple sensation'	Bulbs
Narcissus 'Actaea'	Bulbs
Camassia leichlinii 'Caerulea'	Bulbs
Wisteria sinensis	Climber
Clematis arandii	Climber
Trachelospermum jasmioides	Climber

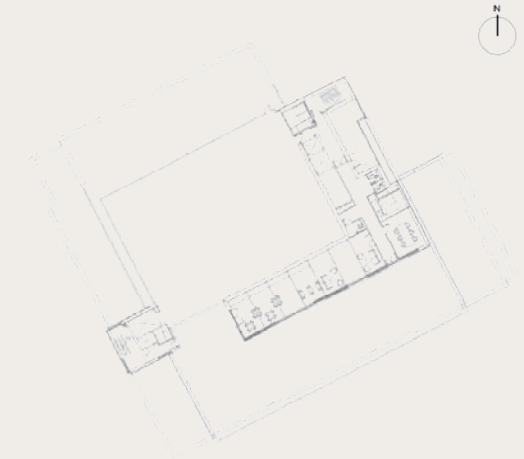


Key Plan



Key Plan

### 03. 7th Floor Amenity Terrace



Key Plan



Seventh Floor Planter Schedule		
Planters	Dimensions	Quantity
P7.1	43.697 sq.m x 800mm(H)	1
P7.2	5.786 sq.m x 600mm(H)	1
P7.3	2.196 sq.m x 800mm(H)	2
P7.4	4.393 sq.m x 800mm(H)	2
P7.5	8.37 sq.m x 600mm(H)	1
P7.6	10.087 sq.m x 600mm(H)	2
P7.7	18.258 sq.m x 600mm(H)	1
P7.8	450 x 9111 x 800mm(H)	1
P7.9	23.796 sq.m x 500mm(H)	1
P7.10	16.108 sq.m x 250mm(H)	1
P7.11	400 x 16988 x 800mm(H)	1

Planting Specification		
Species		Type
Rosmarinus "Miss Jessops Upright"		Shrubs
Rosmarinus postratus		Shrubs
Laurus nobilis		Shrubs
Pinus mugo 'mops'		Shrubs
Hydrangea 'Limelight'		Shrubs
Escallonia laevis		Shrubs
Taxus baccata		Shrubs
Ilex crenata		Shrubs
Magnolia stellata		Shrubs
Skimmia x confusa 'Kew Green'		Shrubs
Polystichum munitum		Evergreen ferns
Blechnum spicant		Evergreen ferns
Acanthus spinosa		Perennials
Miscanthus sinensis		Perennials
Geum 'Totally Tangerine'		Perennials
Geranium rosanne 'Jolly Bee'		Perennials
Libertia grandiflora		Perennials
Syrinchium striatum		Perennials
Anemone x hybrida 'Honorine'		Perennials
Lavandula stoechas		Perennials
Stachys lanata		Perennials
Oenothera lindheimeri		Perennials
Salvia nemerosa x superba Pink		Perennials
Nepeta fasennii		Perennials
Liriope muscari 'monroe white'		Perennials
Allium 'purple sensation'		Bulbs
Narcissus 'Actaea'		Bulbs
Camassia leichlinii 'Caerulea'		Bulbs
Wisteria sinensis		Climber
Clematis armandii		Climber
Trachelospermum jasmioides		Climber
Osteospermum ecklonis		Tender
Nicotiana sylvestris		Tender
Petunia Surfina		Tender
Petunia axillaris		Tender
Pelargonium 'Torrento'		Tender
Oenothera lindheimeri		Tender

# Landscaping

## Planting Strategy

The planting strategy for these relatively sunny, west facing terraces incorporates a higher number of sun-loving flowering perennials than other terraces with a less favourable aspect. Species will include shrubs, perennials and bulbs for year round interest and seasonality.

Planters are distributed to provide a range of seating areas and spaces, and allowing direct access to the perimeter balustrade in locations to admire the view.

Growing medium depths have been dictated by the loading capability of the structure to a maximum of 400-500mm depth on 4th and 6th Floor, and increasing to 700mm depth on 7th Floor where small trees are proposed. Void formers are to be used where planter depths are higher than this.

All planters are to be irrigated, either via a connected automated system or via mona tanks for hand watering.

All planters will incorporate drainage holes 150mm up from the base.

Climbing plants are to be used to create green elevations on brick wall faces. Also, on the 7th floor, there is a pergola structure to create shade and shelter to the seating area. Climbing plant wire supports are to be applied to the structure to provide for a range of fragrant climbers such as wisteria, honeysuckle, jasmine and clematis.

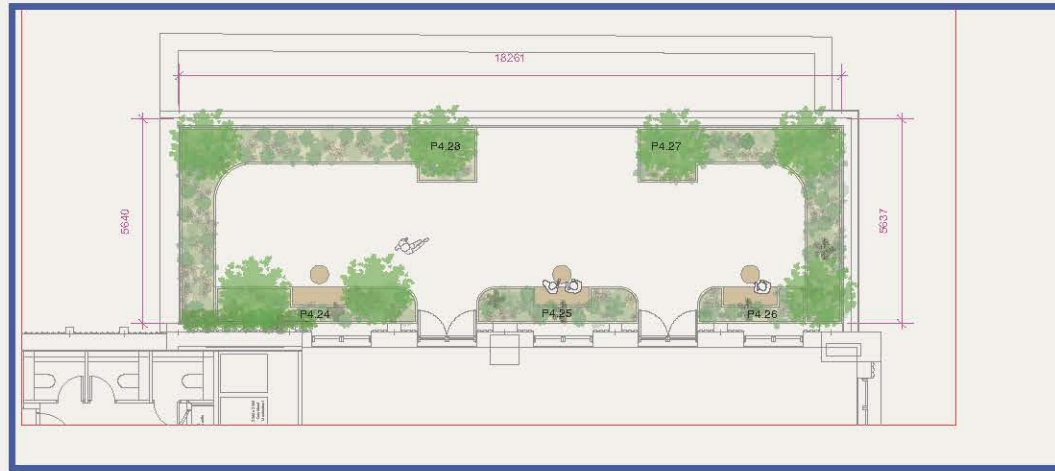




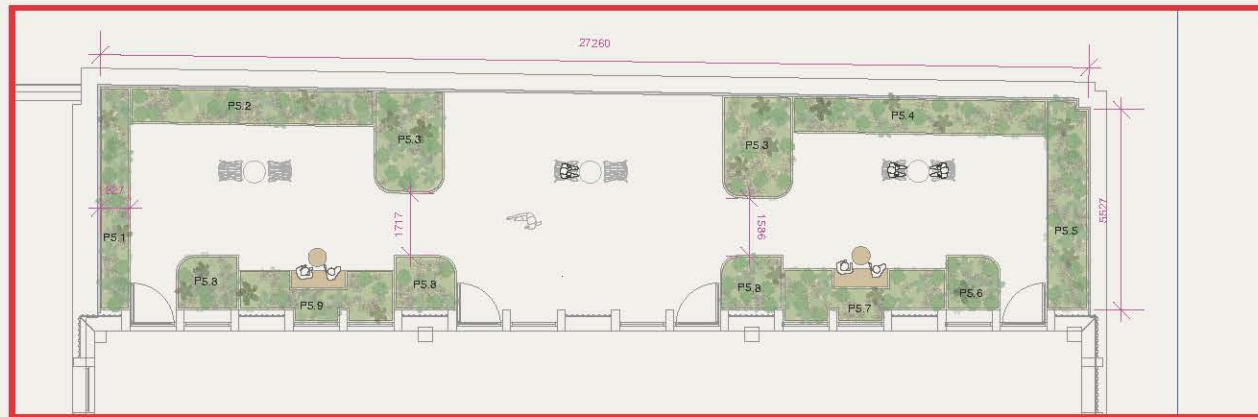
# Landscaping



## 04. 4th (4.3) and 5th Floor Terraces



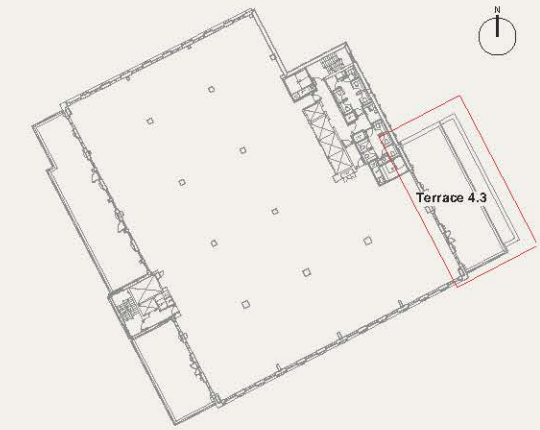
4th Floor



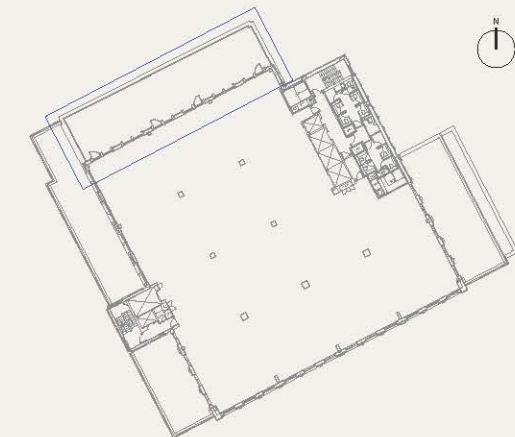
5th Floor

Fourth Floor Planter Schedule		
Planters	Dimensions	Quantity
P4.24	4.054 sq.m x 400mm(H)	1
with 1.6m trellis		
P4.25	3.033 sq.m x 400mm(H)	1
P4.26	1.736 sq.m x 400mm(H)	1
P4.27	9.931 sq.m x 800mm(H)	1
P4.28	12.088 sq.m x 800mm(H)	1

Planting Specification	
Species	Type
Ilex crenata clipped dome	Shrub
Amelanchier lanarkii	Shrub
Hydrangea arborescens 'Annabelle'	Shrub
Skimmia japonica 'Kew Green'	Shrub
Hamamelis x intermedia 'Arnolds Promise'	Shrub
Liriope muscari 'Monroe White'	Perennial
Vinca minor 'Atropurpurea'	perennial
Convallaria majalis	Perennial
Polygonatum multiflorum	Perennial
Hosta 'Sum and Substance'	Perennial
Rogersia aseculifolia	Perennial
Euphorbia amygdaloides robbiae	Perennial
Hedera helix 'Shamrock'	Climber
Anemone x hybrida 'Honorine jobert'	Perennial
Narcissus 'Actaea'	Bulb
Allium 'Purple Sensation'	Bulb
Paradisea lusitanica	Bulb
Dryopteris felix mas	Fern
Polypodium vulgare	Fern
Polystichum munitum	Fern
Bergenia Silberlicht	Perennial
Asplenium scolopendrium	Fern
Blechnum spicant	Fern
Blechnum spicant	Fern



Key Plan



Key Plan

Fifth Floor Planter Schedule		
Planters	Dimensions	Quantity
P5.1	6155 x 827 x 800mm(H)	1
P5.2	6737 x 1000 x 800mm(H)	1
P5.3	5.323 sq.m x 800mm(H)	2
P5.4	7007 x 1000 x 800mm(H)	1
P5.5	6.578 sq.m x 800mm(H)	1
P5.6	2.196 sq.m x 400mm(H)	1
P5.7	5.26 sq.m x 600mm(H)	1
P5.8	2.534 sq.m x 400mm(H)	3
P5.9	4.807 sq.m x 600mm(H)	1