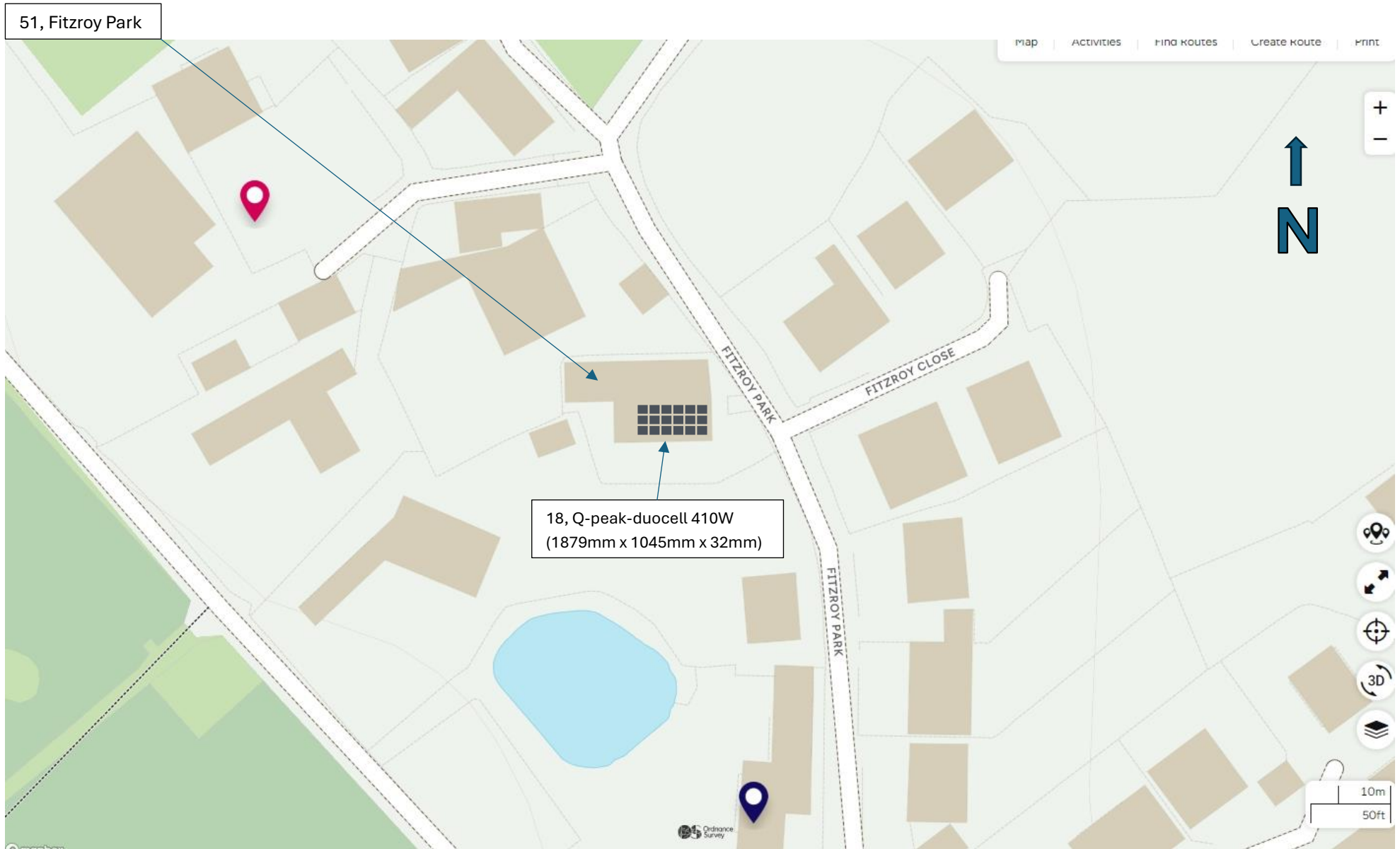
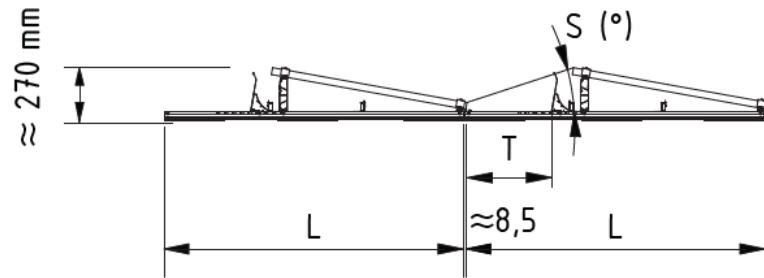


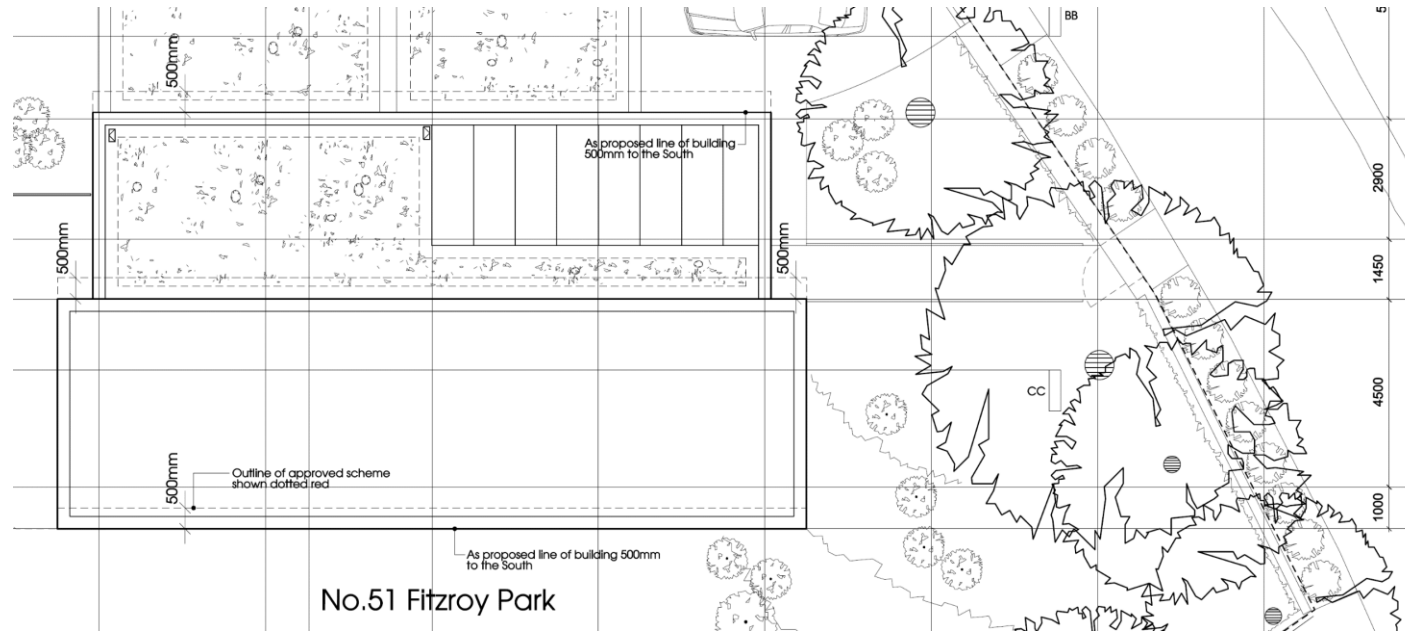
[Type here]



The First Solar designs propose a mounting rail which will allow a module tilt of up to 10° while keeping the height of the module well below the new maximum distance from the roof itself. The specification indicates that the highest edge of the modules will be around 270mm from the roof surface. This complies with the Permitted Development Order.



Module Layout



The original planning drawings indicate that the upper roof section is approximately 13m in length and approximately 5.5m in width. With a row spacing of 1508mm, 18, Q-peak-duocell 410 modules would be installed, the panel size is 1879mm x 1045mm x 32mm.

