

**As you will see from the following slides, the opening hours of MAP studio cafe have changed significantly over time:**

From predominantly a day-time cafe, open 8am - 6pm with occasional late night events

To an evening bar / music venue, open from 1pm - 11pm with late night events all nights of the week

Evidence has been gathered from their own website and the opening times and events published over the last 12 years.

**Planning permission  
granted Sept 2012**

# Sept 2012 - 1st August 2013

## **Opening hours according to their website:**

Mon 8am - 6pm

Tues 8am - 6pm

Wed 8am - 6pm

Thurs 8am - 11pm

Fri 8am - 6pm

Sat 8am - 6pm

Sun 9am - 6pm

## **Occasional later opening for events**

*See next page for screenshots from their website*

Link: <https://web.archive.org/web/20120414032506/http://www.mapstudiocafe.com:80/>

Date screen captured: 14th April 2012 until 31st July 2013



The screenshot shows the MAP Studio Cafe website. At the top, there is a browser address bar with the URL [www.mapstudiocafe.com](http://www.mapstudiocafe.com) and a search bar. Below the browser, there is a navigation menu with "MAP" and "AP" buttons. The main content area features a background image of a pizza. On the left, a "DAILY SPECIALS" menu lists: PEA SOUP (£1.50), CHICKEN & MUSHROOM PIE W/SMALL SALAD (£6.50), RASPBERRY CAKE (£1.50), and HONEY & WALNUT CAKE (£2.50). In the center is a circular logo for MAP Studio Cafe, featuring a globe and a coffee cup, with the text "0207 916 0545 • MAP Studio Cafe" and "46 Grafton Rd • NWS 3DU". On the right, a "LIVE EVENTS" section lists: "Space Rock - £10.00 adv. MORE" and "10 MAY 8pm Busnoys Trio Album Launch" featuring Martin Pynch (violin/electronics/boy piano), Jeff Spencer (bass guitar), and Trevor Davies (drums). A note states: "Busnoys offer an intelligent, imaginative £10.00 adv. MORE". At the bottom of the screenshot, a red banner contains the text: "46 grafton road, london, nw5 3du, uk • 020 7916 0545 • live music and delicious homemade food".

## • MENU •

Serving hot and cold healthy homemade food 7 days a week, pick and choose your way around the daily changing MAP Studio Cafe menu: from snacks, salads and sandwiches to three course meals. We can't wait to treat you to our selection of homemade cakes, freshly squeezed juices and huge array of teas and coffees. Vegetarian options a speciality.

## APPEARING NEXT AT MAP OPENING TIMES

Thu 19th Apr 2012

Christian Brewer Quartet

8:00pm £10.00 MORE

Ring 020 7916 0545 for tickets



8am - 6pm Monday  
8am - 6pm Tuesday  
8am - 6pm Wednesday  
8am - 11pm Thursday  
(Admission free after 7pm)  
8am - 6pm Friday  
8am - 6pm Saturday  
9am - 6pm Sunday

Adam Gee

Adam Gee

*Take away*

# **Period of closure: August 2013 - Jan/Feb 2015**

**MAP closed according to their website and other sources incl. kentishtowner newspaper and google street view from 2014**

Their website lists opening hours:

Mon 8am - 6pm

Tues 8am - 6pm

Wed 8am - 6pm

**There were clearly no late events in this period**

*See next page for screenshots from their website*

Link: <https://web.archive.org/web/20130731011505/http://www.mapstudiocafe.com/>

Notes: Announcement that map is closing for refurbishment 1st August 2013

Date screen captured: 31st July 2013



The screenshot shows the MAP Studio Cafe website. At the top, there is a navigation bar with the address "46 Grafton Rd • NWS 3DU" and a date "JUN 2012". Below this is a large banner image of a dish. On the left, a "DAILY SPECIALS" menu lists: YANKEE BREAKFAST (25.50), CHICKEN & DUMPLING SOUP (24.50), SHEPHERDS PIE (25.50), BEEF GOULASH WITH RICE (26.50), and BREAD & BUTTER PUDDING (25.50). In the center is a circular logo for MAP Studio Cafe with the phone number 0207 7916 0545 and address 46 Grafton Rd • NWS 3DU. On the right, a "LIVE EVENTS" section states "30 SEPT 10am No events" and "Previous: MORE". At the bottom of the banner, a red bar contains the text: "46 grafton road, london, nw5 3du, uk • 020 7916 0545 • live music and delicious homemade food".

## • MENU •

Serving hot and cold healthy homemade food 7 days a week, pick and choose your way around the daily changing MAP Studio Cafe menus from snacks, salads and sandwiches to three course meals. We can't wait to treat you to our selection of homemade cakes, freshly squeezed juices and huge array of teas and coffees.

## APPEARING NEXT AT MAP OPENING TIMES

Mon 30th Sep 2013

No events

0:00am £0.00 MORE

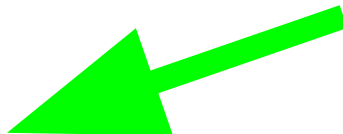
Ring 020 7916 0545 for tickets



8am - 6pm Monday  
8am - 6pm Tuesday  
8am - 6pm Wednesday

From Thursday 1st August: MAP Studio Cafe will be closed for refurbishment.

*Take away*



Link: <https://web.archive.org/web/20131104132459/http://www.mapstudiocafe.com:80/>

Notes: Announcement that map is closing for refurbishment 1st August 2013

Date screen captured: 4th Nov 2013

46 grafton road, london, nw5 3du, uk · 020 7916 0545 · live music and delicious homemade food

### • MENU •

Serving hot and cold healthy homemade food 7 days a week, pick and choose your way around the daily changing MAP Studio Cafe menu: from snacks, salads and sandwiches to three course meals. We can't wait to treat you to our selection of homemade cakes, freshly squeezed juices and huge array of teas and coffees. Vegetarian options a speciality.

#### Breakfast

ENGLISH £5.99  
Bacon, Scrambled or Fried Eggs, Mushrooms, Baked Beans, Cooked Tansies, Toast & Organic Pork Sausage.  
Served with Tea or Americano

VEGIE £5.50  
Scrambled or Fried Eggs, Mushrooms, Baked Beans,

### APPEARING NEXT AT MAP

Thu 1st Jan 1970  
0:am £ MORE  
Ring 020 7916 0545 for tickets

### OPENING TIMES

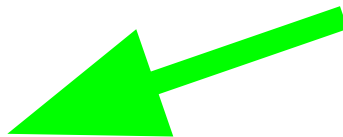
8am - 6pm Monday  
8am - 6pm Tuesday  
8am - 6pm Wednesday

From Thursday 1st August MAP Studio Cafe will be closed for refurbishment.

### Take away

Don't have time to stop off for breakfast or lunch? Our delicious food is also available as a take away service at anytime during opening hours. In a hurry? You can pre-order food for collection by calling 020 7916 0545.

### ABOUT MAP



## **Feb 2015 - April 2015**

**Opening hours according to their website:**

Mon Closed

Tues Closed

Wed 8am - 6pm

Thurs 8am - 6pm

Fri 8am - 6pm

Sat 8am - 6pm

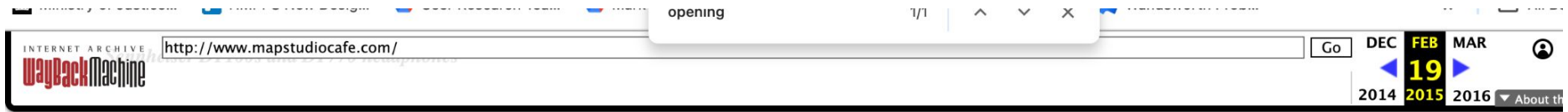
Sun 9am - 6pm

**With occasional events that ran later**



Link: <https://web.archive.org/web/20150219125125/http://www.mapstudiocafe.com:80/>

Date screen captured: 19th Feb 2015



opening 1/1

INTERNET ARCHIVE  
waybackmachine

<http://www.mapstudiocafe.com/> Go

DEC FEB 19 MAR  
2014 2015 2016 About th

*Instruments/Other: W.Hoffmann upright piano, Roland JX8P, Kawai K1, Crumar Stringman analogue string synth.*

[Watch a video from this article](#)

 **Opening Times**

**Wednesday:8am till 6pm**

**Thursday:8am till 6pm**

**Friday:8am till 6pm**

**Saturday:8am till 6pm**

**Sunday:9am till 6pm**

**OPEN TILL LATE ON EVENT NIGHTS**


**WE WILL BE CLOSED ON MONDAY'S AND TUESDAY'S**

Link: <https://web.archive.org/web/20150322151814/http://www.mapstudiocafe.com/>

Date screen captured: 22nd March 2015

INTERNET ARCHIVE  Go FEB MAR MAY  
**WaybackMachine** [278 captures](#) 19 Mar 2011 - 21 Feb 2024 2014 **22** 2015 2016 About this capture

[Watch a video from this article](#)

 Opening Times

Wednesday: 8am till 6pm

Thursday: 8am till 6pm

Friday: 8am till 6pm

Saturday: 8am till 6pm

Sunday: 9am till 6pm

**OPEN TILL LATE ON EVENT NIGHTS**

**WE WILL BE CLOSED ON MONDAY'S AND TUESDAY'S**

Follow us on **TWITTER** for all the latest updates @mapstudiocafe

# April 2015 - Sept 2015

Opening hours according to their website:

Mon Closed

Tues 8am - 9pm

Wed 8am - 9pm

Thurs 8am - 9pm

Fri 8am - 9pm

Sat 8am - 9pm

Sun 9am - 6pm

**With occasional events that ran later**



46 Grafton Road, London, NW5 3DU, UK · 020 7916 0545 · Live music and delicious homemade food

## • MENU •

Welcome to the Map Studio Cafe where our aim is to cater for all your needs.

We serve both hot and cold food, come in for Breakfast a full meal or just a snack; everything is prepared and cooked on the premises from the finest ingredients.

Delicious homemade cakes, freshly squeezed juices, crispy salads and fresh sandwiches

## APPEARING NEXT AT MAP **OPENING TIMES**

Thu 23rd Apr 2015

D J Locksmith

8:00pm £0.00 [MORE](#)

Ring 020 7916 0545 for tickets ...



Dorian Ford

Monday: closed

Tuesday: 8am till 9pm

Wednesday: 8am till 9pm

Thursday: 8am till 9pm

Friday: 8am till 9pm

Saturday: 8am till 9pm

Sunday: 9am till 6pm

OPEN TILL LATE ON EVENT

NIGHTS

Follow us on TWITTER for all the

latest updates @mapstudiocafe

# Oct 2015 - Oct 2018

Opening hours according to their website:

Mon Closed

Tues 8am - 9pm

Wed 8am - 9pm

Thurs 8am - 9pm

Fri 8am - late

Sat 8am - late

Sun 9am - 6pm

## CONTACT

MAP Studio Cafe  
46 Grafton Road  
London  
NW5 3DU

Phone: +44 (0)207 916 0545

Cafe: [info@mapstudiocafe.com](mailto:info@mapstudiocafe.com)

Events / hire: [info@mapmusic.net](mailto:info@mapmusic.net)

Recording studio:

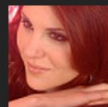
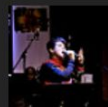
[maprecordingstudio@gmail.com](mailto:maprecordingstudio@gmail.com)

## CAFE OPENING TIMES

Monday: Closed  
Tuesday: 8am till 9pm  
Wednesday: 8am till 9pm  
Thursday: 8am till 9pm  
Friday: 8am till late  
Saturday: 8am till late  
Sunday: 9am till 6pm

OPEN TILL LATE ON EVENT NIGHTS  
RECORDING STUDIO OPEN 24 HOURS 7  
DAYS A WEEK

## FROM FLICKR



## SUBSCRIBE TO OUR MAILING LIST

Name:

Email:

Byte The Book - Book Club

SOCIAL

## **Nov 2018 - Nov 2019**

**Opening hours according to their website:**

Mon Closed

Tues 8am - 6pm

Wed 8am - 6pm

Thurs 8am - 6pm

Fri 8am - 6pm

Sat 8am - 6pm

Sun 9am - 6pm

**With occasional events that ran later**

INTERNET ARCHIVE <http://mapstudiocafe.com/> Go SEP NOV DEC  
**WayBackMachine** [278 captures](#) 19 Mar 2011 - 21 Feb 2024  
2017 **02** 2018 2019 About this capture

## CONTACT

MAP Studio Cafe  
46 Grafton Road  
London  
NW5 3DU

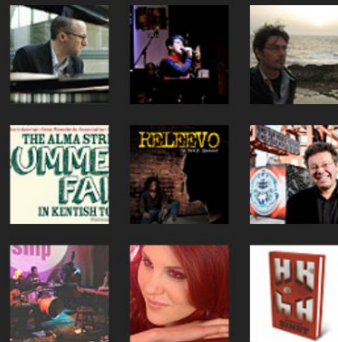
Phone: +44 (0)207 916 0545  
Events/Bookings: Any booking enquiries for private or public events, please contact us at [info@mapmusic.net](mailto:info@mapmusic.net) or call us +44 (0)207 916 0545  
Recording Studio:  
[maprecordingstudio@gmail.com](mailto:maprecordingstudio@gmail.com)

## CAFE OPENING TIMES

Monday: Closed  
Tuesday: 8am till 6pm  
Wednesday: 8am till 6pm  
Thursday: 8am till 6pm  
Friday: 8am till 6pm  
Saturday: 8am till 6pm  
Sunday: 9am till 6pm

OPEN TILL LATE ON EVENT NIGHTS  
RECORDING STUDIO OPEN 24 HOURS 7  
DAYS A WEEK

## FROM FLICKR



## SUBSCRIBE TO OUR MAILING LIST

Name:

Email:



## **Dec 2019 - March 2020**

**Opening hours according to their website:**

Mon 8am - 6pm

Tues 8am - 6pm

Wed 8am - 6pm

Thurs 8am - 6pm

Fri 8am - 6pm

Sat 8am - 6pm

Sun 9am - 6pm

**With occasional events that ran later**

## CONTACT

MAP Studio Cafe

46 Grafton Road

London

NW5 3DU

Phone: +44 (0)207 916 0545

Events/Bookings:

Private hire for parties/other events:

[info@mapmusic.net](mailto:info@mapmusic.net)

Gig Bookings: [niall@map-print.com](mailto:niall@map-print.com)

General enquiries: [info@mapmusic.net](mailto:info@mapmusic.net)

Recording Studio:

[maprecordingstudio@gmail.com](mailto:maprecordingstudio@gmail.com)

## CAFE OPENING TIMES

Monday: 9am till 6pm

Tuesday: 9am till 6pm

Wednesday: 9am till 6pm

Thursday: 9am till 6pm

Friday: 9am till 6pm

Saturday: 9am till 6pm

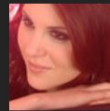
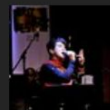
Sunday: 9am till 6pm

OPEN TILL LATE ON EVENT NIGHTS

RECORDING STUDIO OPEN 24 HOURS 7

DAYS A WEEK

## FROM FLICKR



## SUBSCRIBE TO OUR MAILING LIST

Name:

Email:

SUBMIT

**Period of closure**

**March 2020 - May/June 2021**

**No evening events in this time**

# **June 2021 - May 2022**

**Opening hours according to their website:**

Mon 10am - 8pm

Tues 10am - 8pm

Wed 10am - 8pm

Thurs 10am - 8pm

Fri 10am - 8pm

Sat 10am - 8pm


Sun 10am - 8pm


**Later events: Starting to take place every night of the week**


Link: Opening hours: Reopened again with new hours - no longer a cafe

Photo from: 7th Jun 2021




 **mapstudiocafe** ...

 **mapstudiocafe** Kicking off our new opening hours with a TWO HOUR happy hour 🥳 15% off all food and drink every day 5-7pm 🍷  
Edited · 141 w

 **dan\_tenor\_city** ❤️👍  
122 w Reply

♡ 🔍 🚩

**31 likes**  
7 June 2021

 Add a comment... Post

INTERNET ARCHIVE  Go **AUG** **NOV**  
**WaybackMachine** [278 captures](#) 19 Mar 2011 - 21 Feb 2024 **29**  
2020 **2021**

## CONTACT

MAP Studio Cafe  
46 Grafton Road  
London  
NW5 3DU  
Phone: +44 (0)207 916 0545

Venue Bookings: [niall@map-print.com](mailto:niall@map-print.com)  
Recording Studio:  
[maprecordingstudio@gmail.com](mailto:maprecordingstudio@gmail.com)  
General Enquiries: [info@mapmusic.net](mailto:info@mapmusic.net)

## CAFE OPENING TIMES

Monday: 10am-8pm  
Tuesday: 10am-8pm  
Wednesday: 10am-8pm  
Thursday: 10am-8pm  
Friday: 10am-8pm  
Saturday: 10am-8pm  
Sunday: 10am-8pm

OPEN TILL 11.30PM ON EVENT NIGHTS  
RECORDING STUDIO OPEN 24 HOURS 7  
DAYS A WEEK

## SOCIAL



## SUBSCRIBE TO OUR MAILING LIST

Name:

Email:

**SUBMIT**

# **May 2022 - May 2023**

**Opening hours according to their website:**

Mon 11am - 11pm

Tues 11am - 11pm

Wed 11am - 11pm

Thurs 11am - 11pm

Fri 11am - 11pm

Sat 11am - 11pm

Sun 11am - 11pm

**Later events: Starting to take place every night of the week  
Increase in noise complaints and complaints to licencing**

INTERNET ARCHIVE  Go APR MAY JUN 2021 18 2022 2023 About t

WayBackMachine 278 captures 19 Mar 2011 - 21 Feb 2024

## CONTACT

MAP Studio Cafe  
46 Grafton Road  
London  
NW5 3DU  
Phone: +44 (0)207 916 0544

Venue Bookings: [niall@map-print.com](mailto:niall@map-print.com)  
Recording Studio:  
[maprecordingstudio@gmail.com](mailto:maprecordingstudio@gmail.com)  
General Enquiries: [info@mapmusic.net](mailto:info@mapmusic.net)

## CAFE OPENING TIMES

Monday: 11am -11pm  
Tuesday: 11am -11pm  
Wednesday: 11am -11pm  
Thursday: 11am -11pm  
Friday: 11am -11pm  
Saturday: 11am -11pm  
Sunday: 11am -11pm

RECORDING STUDIO OPEN 24 HOURS 7  
DAYS A WEEK

## SOCIAL



## SUBSCRIBE TO OUR MAILING LIST

Name:

Email:

SUBMIT



# June 2023 - Current

**Opening hours according to their website:**

Mon 1pm - 11pm

Tues 1pm - 11pm

Wed 1pm - 11pm

Thurs 1pm - 11pm

Fri 1pm - 11pm

Sat 1pm - 11pm

Sun 1pm - 11pm

**Much later opening - no longer a cafe. Disruptive all nights of the week, not just some!**

**Later events: Taking place every night of the week**

**Increase in noise complaints and complaints to licencing**

## CONTACT

MAP Studio Cafe  
46 Grafton Road  
London  
NW5 3DU  
Phone: +44 (0)207 916 0544

Venue Bookings: [niall@map-print.com](mailto:niall@map-print.com)  
Recording Studio:  
[maprecordingstudio@gmail.com](mailto:maprecordingstudio@gmail.com)  
General Enquiries: [info@mapmusic.net](mailto:info@mapmusic.net)

## CAFE OPENING TIMES

Monday: 1pm -11pm  
Tuesday: 1pm -11pm  
Wednesday: 1pm -11pm  
Thursday: 1pm -11pm  
Friday: 1pm -11pm  
Saturday: 1pm -11pm  
Sunday: 1pm -11pm

RECORDING STUDIO OPEN 24 HOURS 7  
DAYS A WEEK

## SOCIAL



## SUBSCRIBE TO OUR MAILING LIST

Name:

Email:

SUBMIT

## **Other evidence for change of use**

Rooms that were rented out as offices have been changed to 'music production rooms' in March 2021. These rooms are not fit for purpose and have no professional soundproofing.

A bass from these rooms reverberates through the part wall daily.

These rooms are an extension of MAPs offering and a music production venue and should be included in their planning and licensing conditions.

In practice they mean that noise nuisance is an issue throughout the day and night and coming from all directions as illustrated in the following slides

## Outdoor seating, front of building

Noise from people leaving loudly and congregating, even after 11pm.

As per license. Only 4 people allowed here to smoke at a time.

Currently there is no dispersal policy in the license. This seems to be an oversight now that they are operating as a live music venue with music every night



**Terrace:** People on the terrace are out there until 11pm often making a lot of noise. As per their license they are only allowed to be there until 8pm.

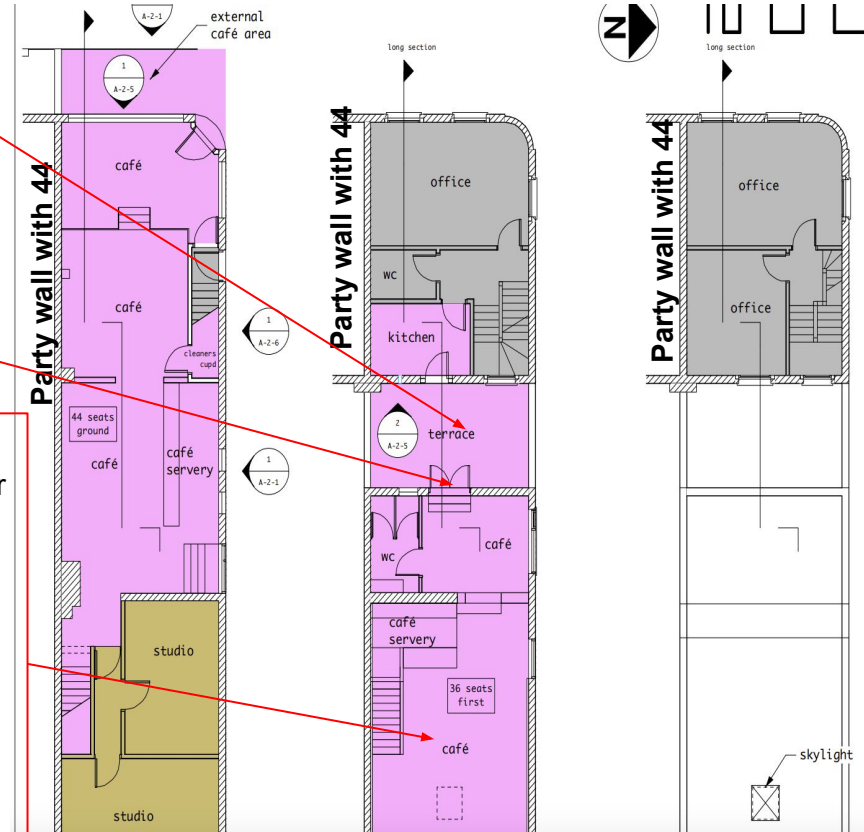
**Terrace doors** are often left open. Makes noise even worse.

**Live music venue.**  
The noise can be heard throughout our house especially in the kitchen

Their license says it can open until 11pm

The planning says they can only be open until 6pm

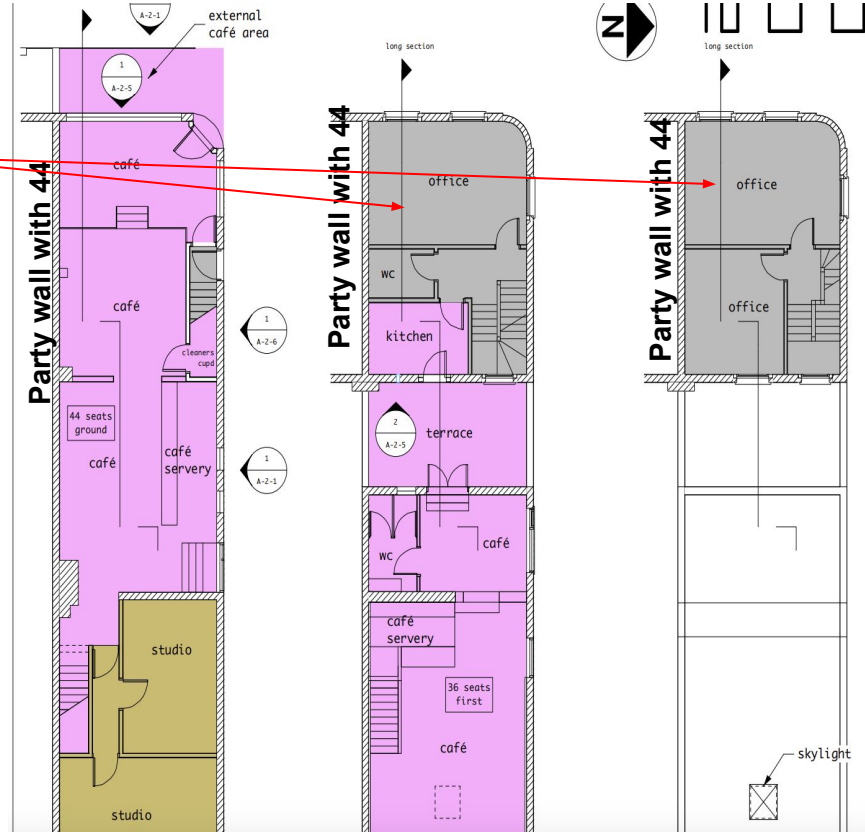
Planning also limits the level of noise allowed to emanate from the venue  
(Which they do not adhere to)



## Music production rooms

These rooms were offices until 2021

They have been converted (with very minimal sound proofing) into music production rooms and the bass pumps through the whole house



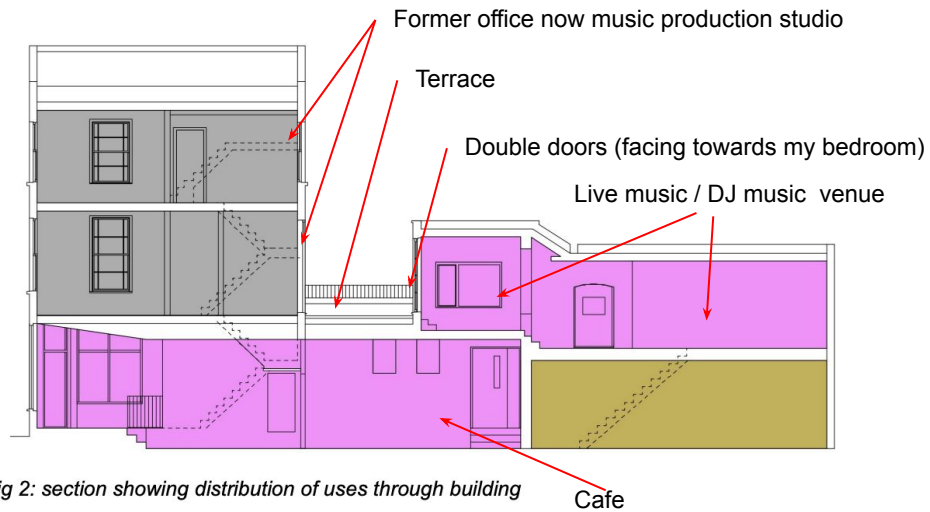
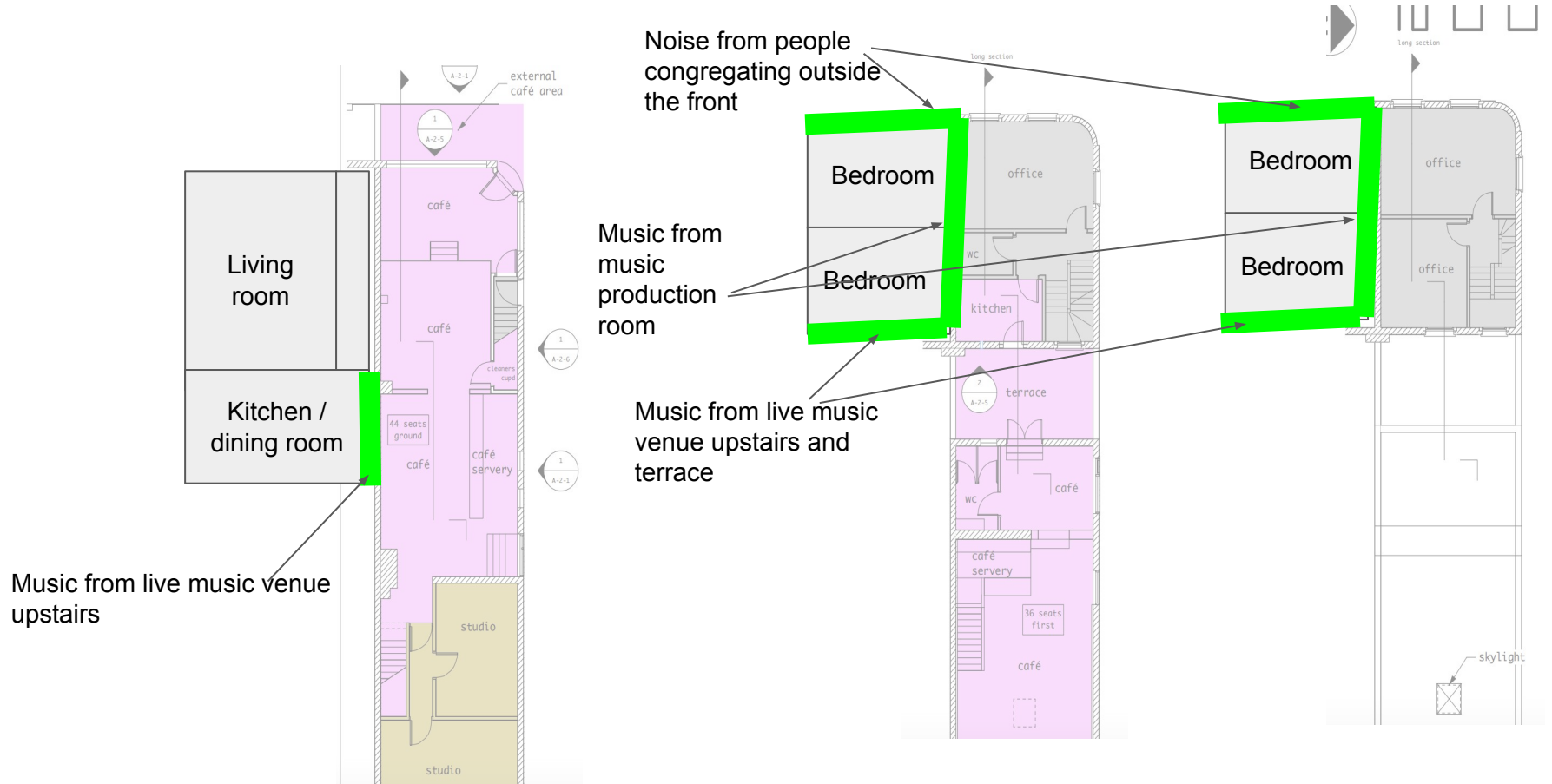


Fig 2: section showing distribution of uses through building

Green lines show where neighbours are impacted by noise. This can often be simultaneous.





## Links to examples of noise:

[Example of music and people on the terrace](#)

[Example of people drinking on the terrace after 8pm](#)

[People drunk and loud leaving MAP](#) - falling into street. This was **after** being told of a licensing and planning review

[Example of event noise heard from street](#) impacting local amenities and causing public nuisance