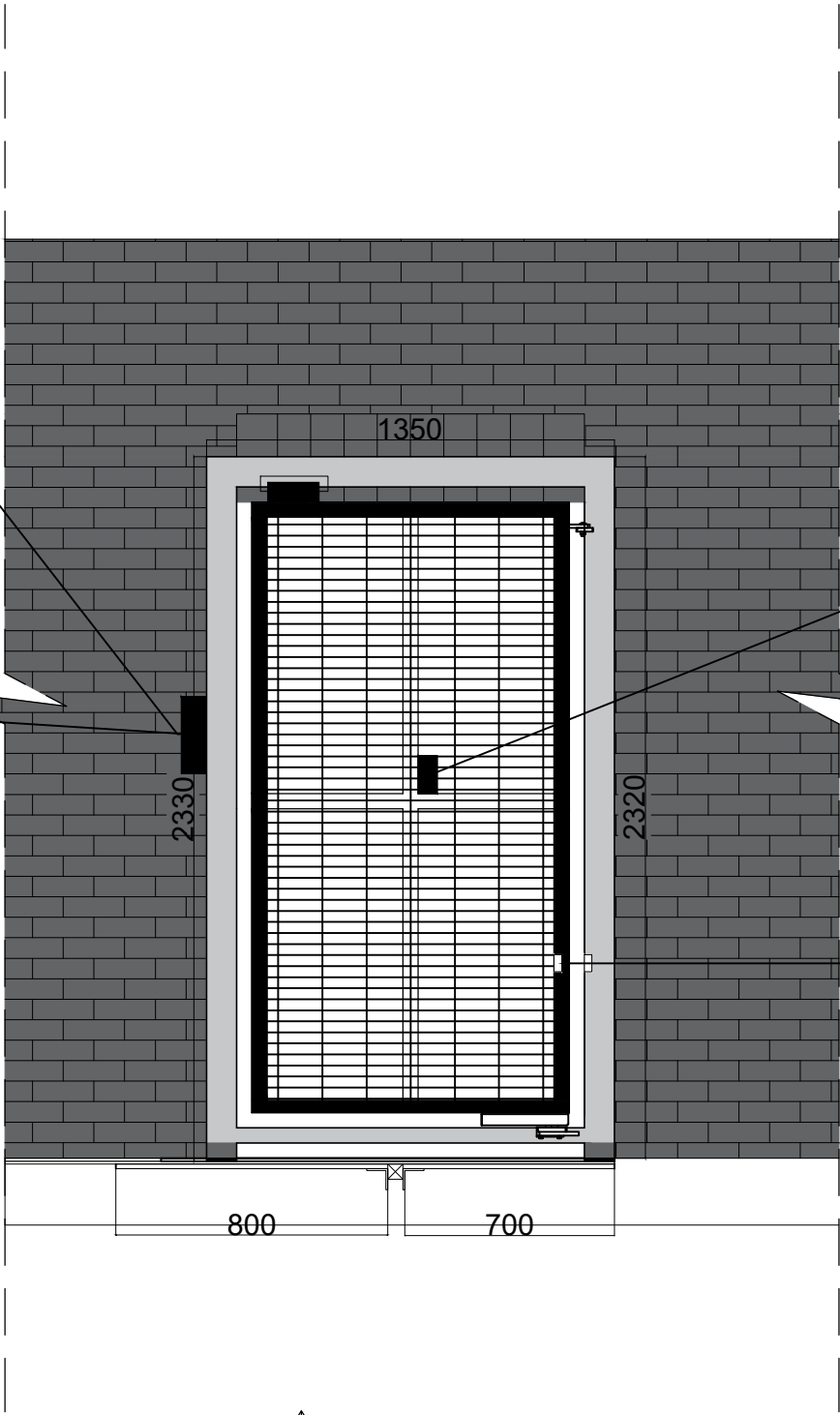




PUSH TO EXIT



BREAK GLASS BOX FACE
FIXED

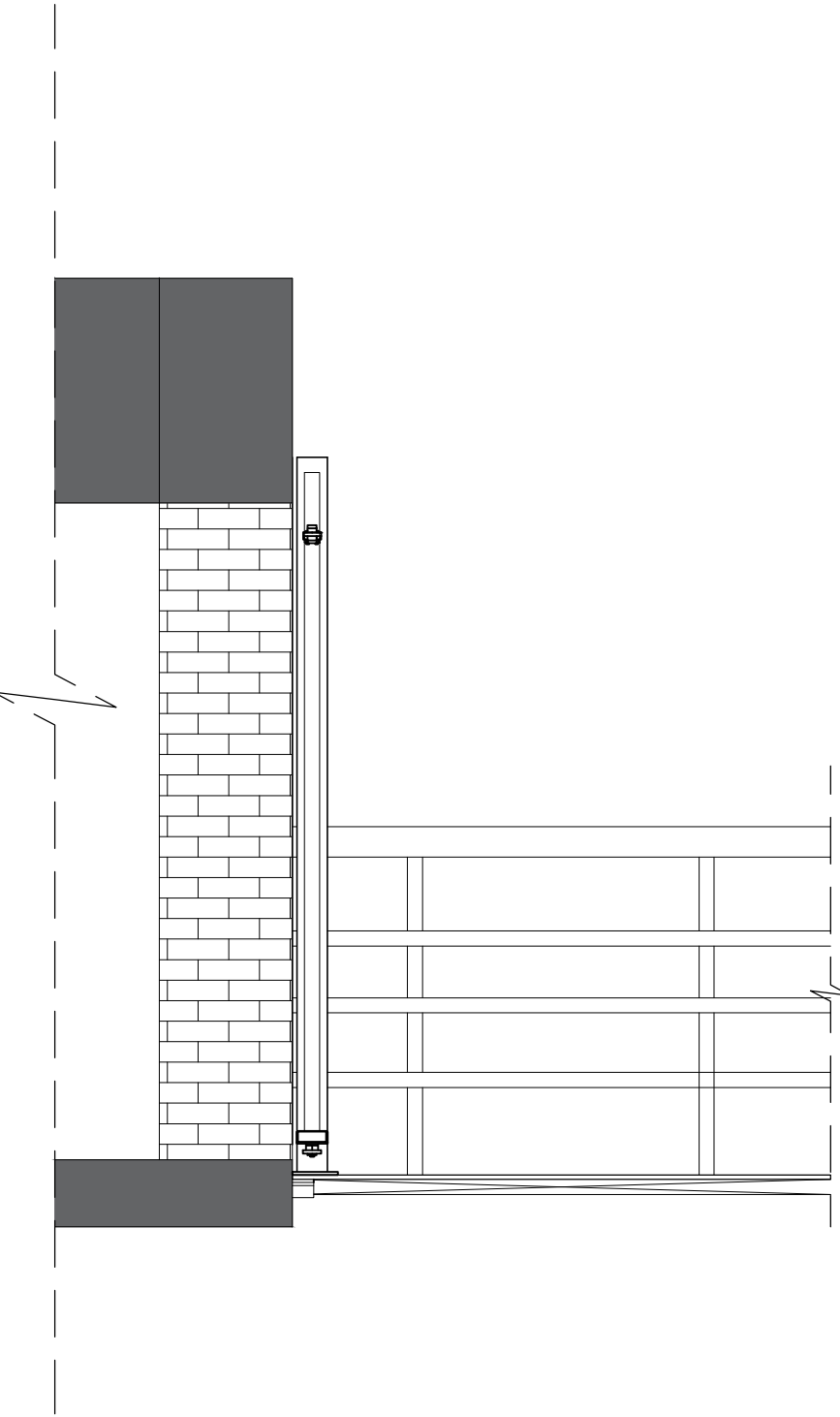


FRONT VIEW
INWARD OPENING



GATE TAG READER

DOOR LOOP



SECTION

GATE DETAILS

- GATE FRAME HEIGHT 2270mm GATE FRAME WIDTH OUTSIDE TO OUTSIDE 1350mm
- 100mm x 100mm x 5mm BOX SECTION SIDE AND TOP CROSS BAR
- 50mm x 50mm x 3mm BOX SECTION FRAME
- 358 MESH
- 50mm x 50mm VERTICAL AND HORIZONTAL BRACES TO BE FITTED BEHIND THE MESH
- GATE CLOSER TO BE FITTED TO BOTTOM OF THE GATE.
- 1 ANTI DROP CABLE TO BE FITTED TO THE TOP OF THE GATE.
- 100mm x 50mm FLAT BAR WELDED ON THE BACK SIDE OF THE GATE TAG READER OR TO BE ROUTED THROUGH THE GATE FRAME
- MAG LOCK Z BRACKET FITTED TO THE TOP OF THE GATE FRAME

BASE PLATE DETAILS

- GATE FRAME TO BE BASE FIXED TO GRILLED MESH FLOOR ON TOP OF THE STAIRS.
- BASE PLATE TO HAVE A SECONDARY PLATE UNDER THE MESH AND TO BE USED AS A CLAMPING SYSTEM.
- BASE PLATE TO THE UNDERSIDE OF MESH 10mm THICK 2 SECTIONS AT 727mm WIDE
- BASE PLATE WELDED TO GATE POSTS TO BE 15mm THICK
- BASE PLATES TO BE FIXED USING M16 COUNTERSINK BOLTS AND NY LOCK NUTS.
- 500 kg MORTICE MAG LOCK CUT INTO THE TOP CROSS MEMBER.
- 15mm x 1300mm x 400mm WIDE CLAMPING BASE PLATE UNDER MESH 10
- 70mm x 70mm x6mm EQUAL ANGLE x 2 SECTIONS AT 400 WIDE TO BE USED UNDER THE PLATFORM TO SECURE PLATE TO EXISTING CROSS BAR.

IC2	Issued For Comment	21/10/24
IC1	Issued For Comment	10/10/24
Rev	Comments	Date

WLS

creating safe space

CLIENT

Conor Perry

PROJECT

Runway East 24 -28 Bloomsbury Way
London
WC1A2SN

CONTRACTOR

WLS ONLY.jpg

WLS Ltd
22-36 Paxton Place
London
SE27 9SS

DRAWING TITLE

Mesh Gate

Designed	KQ	Signature	Date	SCALE	NTS	DRAWING STATUS
Drawn By	AA					FOR COMMENT
Checked	KQ			REVISION	DATE	
Approved	SA			IC2	21/10/2024	

DRAWING REFERENCE

WLS / SA023 / GT / G / 001