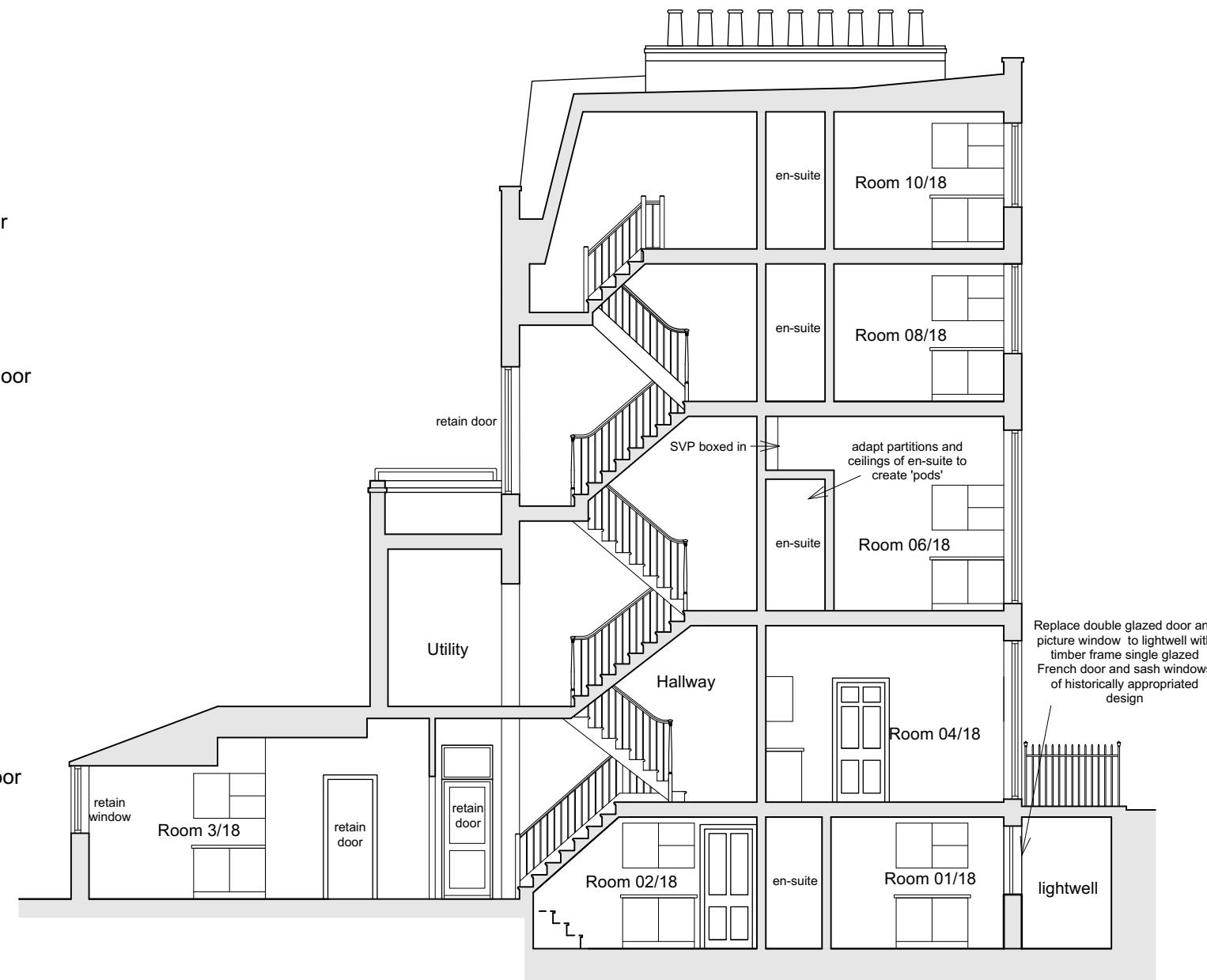
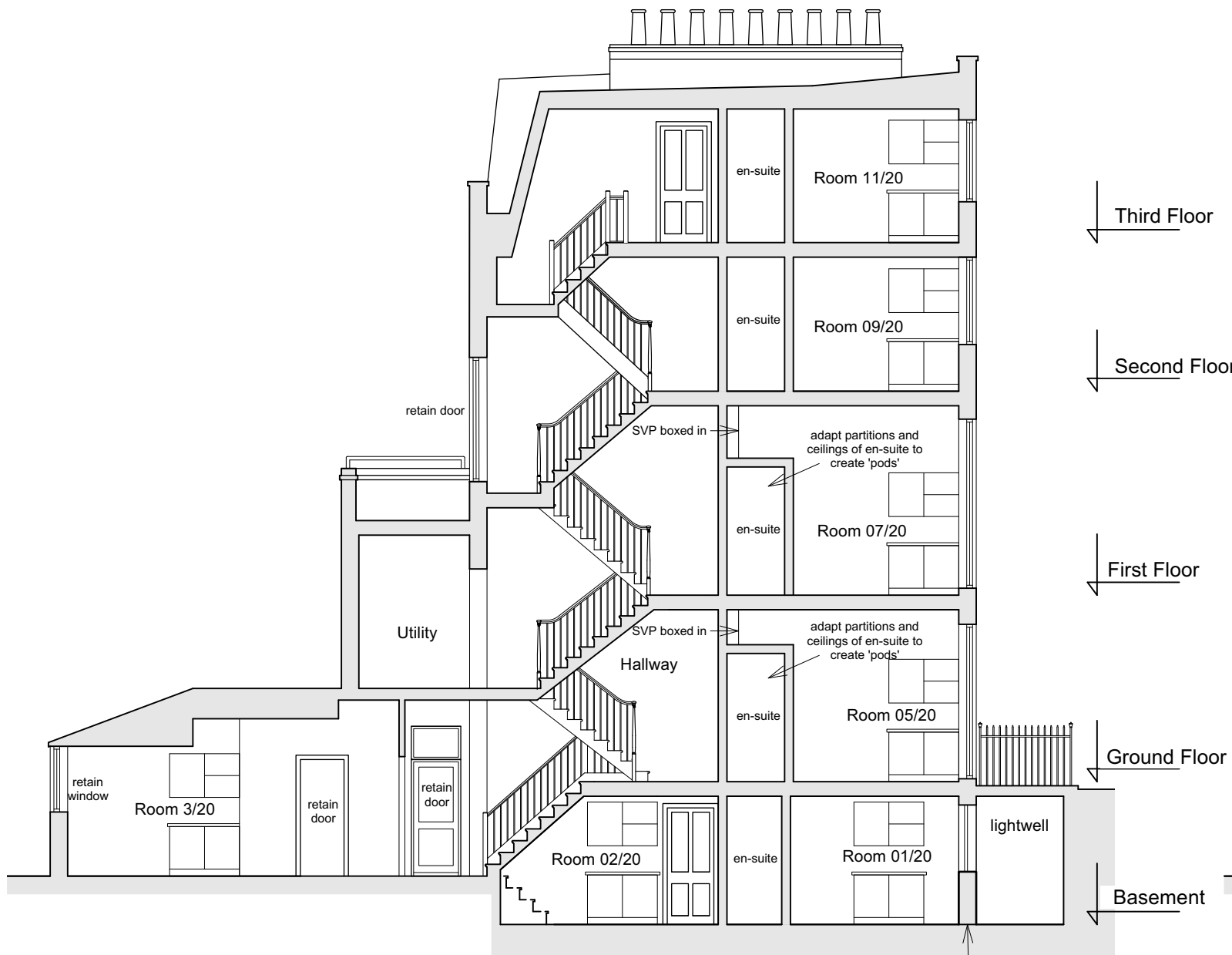


Notes



1 Proposed Section C-C (no20)
 (02)19 Scale: 1:100

2 Proposed Section D-D (no18)
 (02)19 Scale: 1:100

Replace double glazed door and picture window to lightwell with timber frame single glazed French door and sash windows of historically appropriated design

GENERALLY:

WINDOWS: unless specified otherwise, replace double glazed top and bottom sashes with timber frame single glazed sashes of historically appropriated design as per drawing (31)01. Retain sash boxes

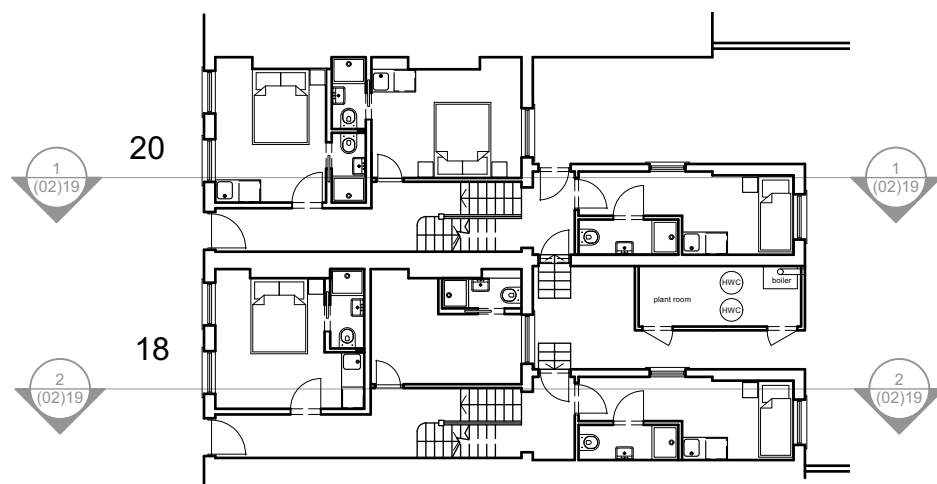
STAIRCASE: new timber risers, handrail, spindles and newels of historically appropriate design at all levels

HALLWAY: Remove MDF boards to expose original floorboard. New carpet throughout.

LANDINGS/HALF LANDINGS: replace MDF board with new timber floorboards. Carpet throughout

LIGHTING: Remove recessed LED strip light throughout.

Replace existing internal doors to hallway with panelled doors as per drawing (31)05. Finished doors to retain existing fire rating.



Key to sections



B	Doors updated	21/11/2024
A	Annotations updated	01/08/2024

Revisions

Kelley House
 18-20 Royal College Street
 NW1

Proposed Sections C-C & D-D

ROGER MEARS ARCHITECTS LLP
 Union Chapel, Compton Avenue London N1 2XD

rma@rmears.co.uk tel 020 7359 8222
 www.rmears.co.uk © Roger Mears Architects LLP

Date	Scale
Sep 2024	1:100@A3

Job No.	Dwg No.	Rev
2245	(02)19	B