

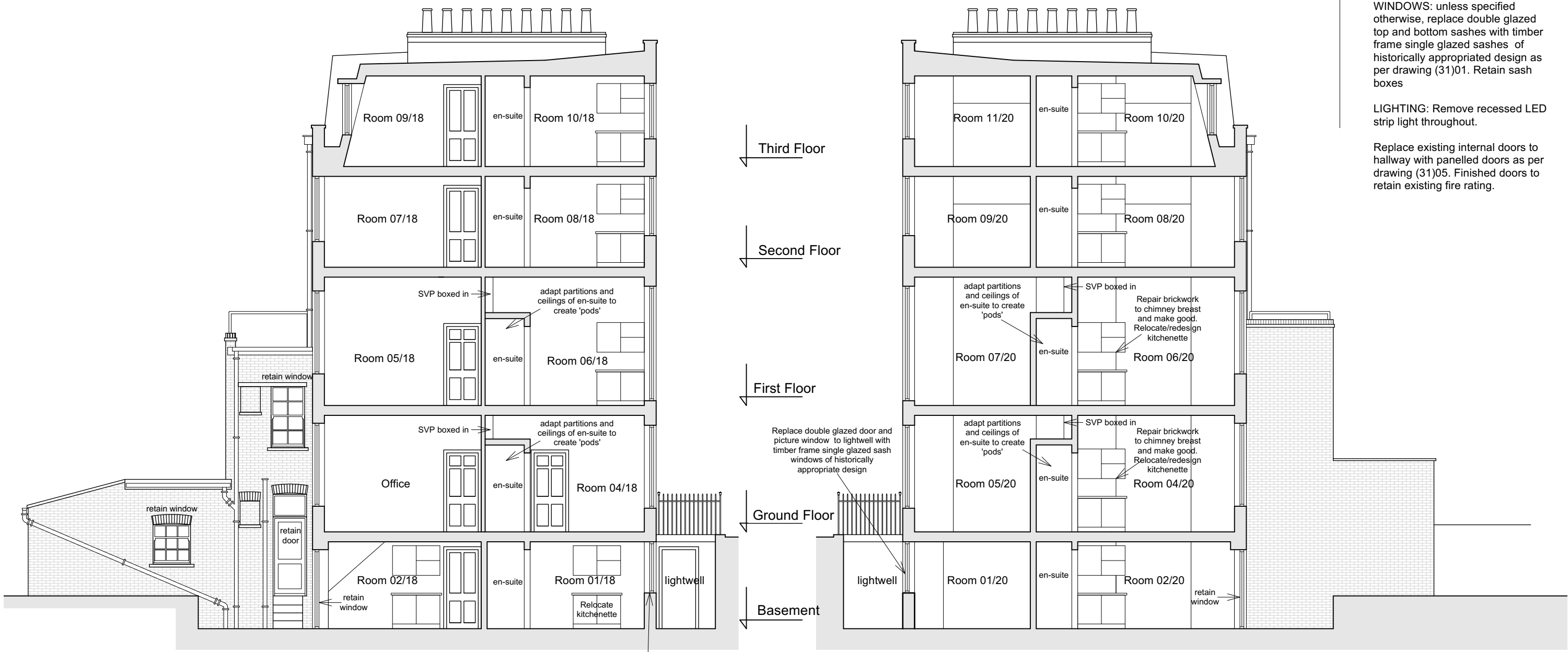
Notes

GENERALLY:

WINDOWS: unless specified otherwise, replace double glazed top and bottom sashes with timber frame single glazed sashes of historically appropriated design as per drawing (31)01. Retain sash boxes

LIGHTING: Remove recessed LED strip light throughout.

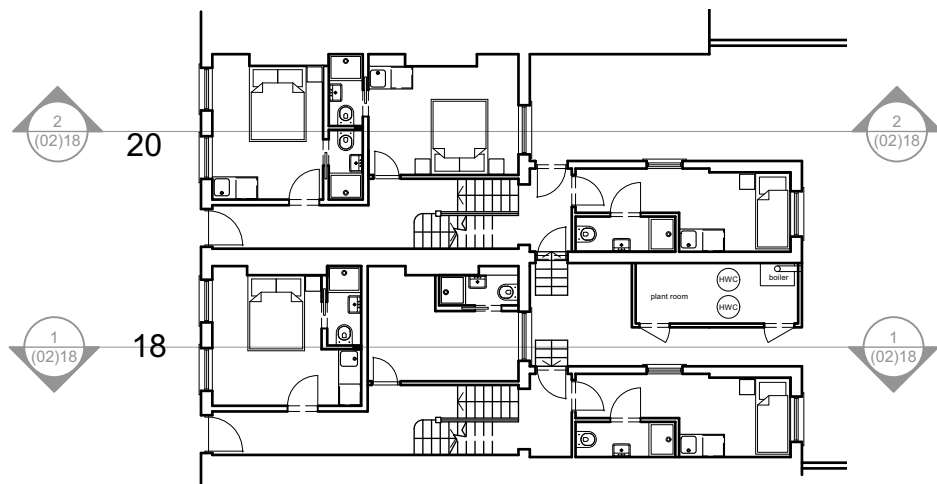
Replace existing internal doors to hallway with panelled doors as per drawing (31)05. Finished doors to retain existing fire rating.



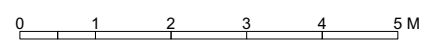
**1** Proposed Section A-A (no18)  
 (02)18 Scale: 1:100

**2** Proposed Section B-B (no20)  
 (02)18 Scale: 1:100

Replace double glazed door and picture window to lightwell with timber frame single glazed sash windows of historically appropriate design



Key to sections



B	Doors updated	21/11/2024
A	Annotations updated	01/08/2024

Revisions

Kelley House  
 18-20 Royal College Street  
 NW1  
 Proposed Sections AA & B-B

**ROGER MEARS ARCHITECTS LLP**  
 Union Chapel, Compton Avenue London N1 2XD

rma@rmears.co.uk tel 020 7359 8222  
 www.rmears.co.uk © Roger Mears Architects LLP

Date	Scale
Sep 2024	1:100@A3

Job No.	Dwg No.	Rev
2245	(02)18	B