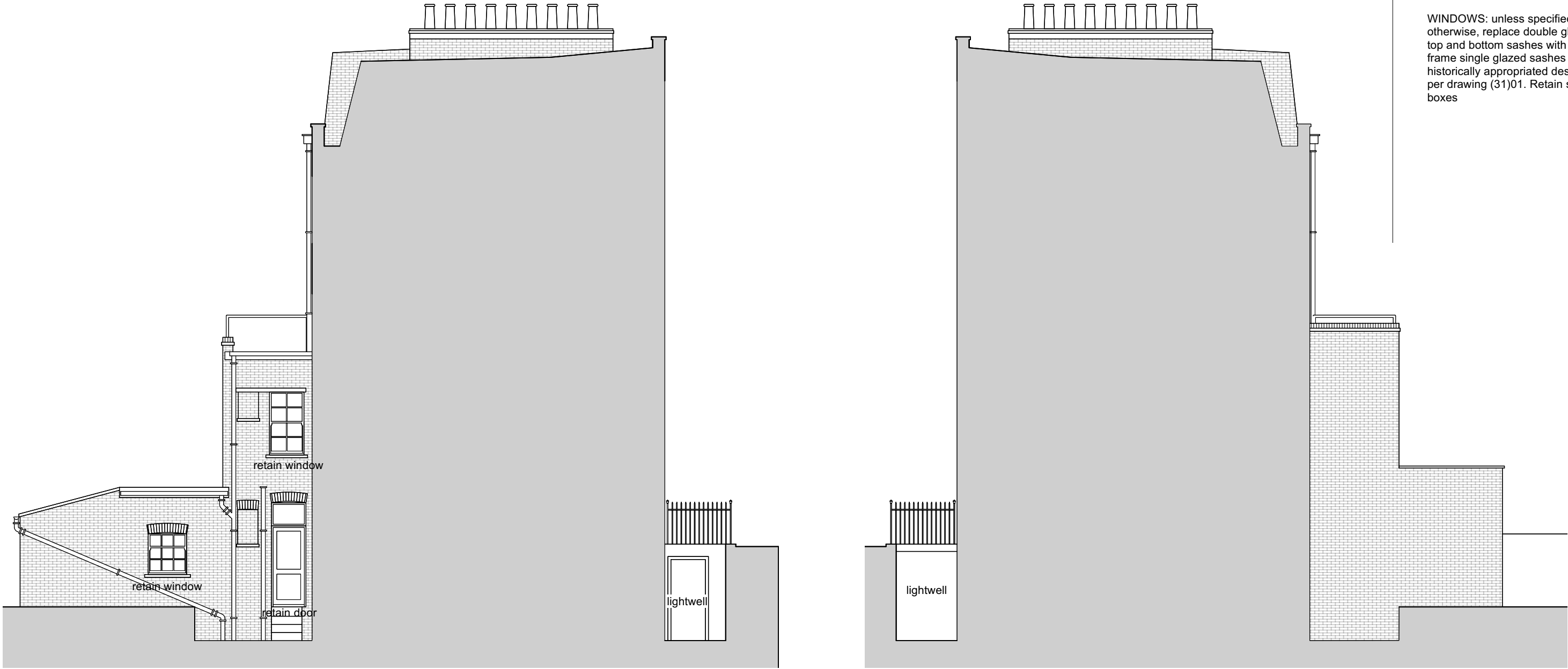


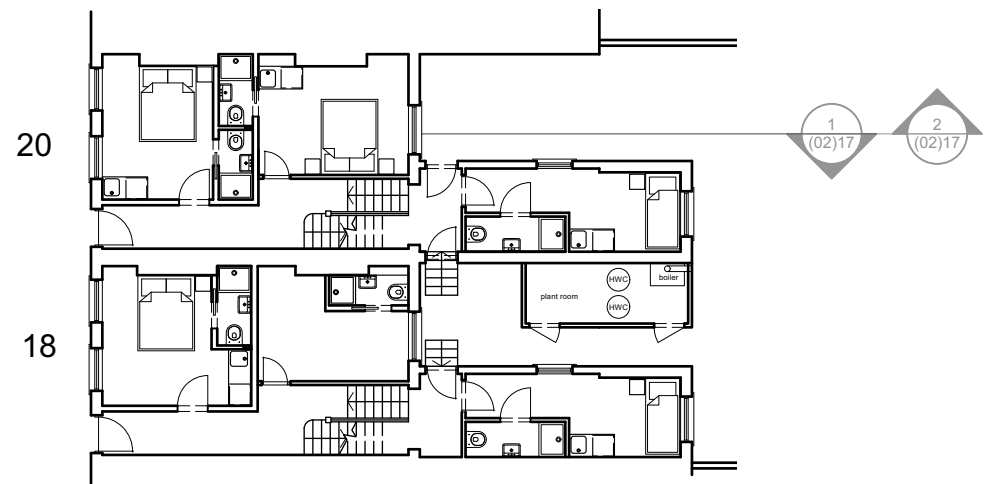
Notes

GENERALLY:
 WINDOWS: unless specified otherwise, replace double glazed top and bottom sashes with timber frame single glazed sashes of historically appropriated design as per drawing (31)01. Retain sash boxes

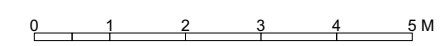


1 Proposed South East Elevation
 (02)17 Scale: 1:100

2 Proposed North West Elevation
 (02)17 Scale: 1:100



Key to sections



A Annotations updated		01/08/2024
Revisions		
Kelley House 18-20 Royal College Street NW1		
Proposed Side Elevations no20 No20		
ROGER MEARS ARCHITECTS LLP Union Chapel, Compton Avenue London N1 2XD		
rma@rmears.co.uk www.rmears.co.uk		tel 020 7359 8222 © Roger Mears Architects LLP
Date Sep 2024	Scale 1:100@A3	
Job No. 2245	Dwg No. (02)17	Rev A