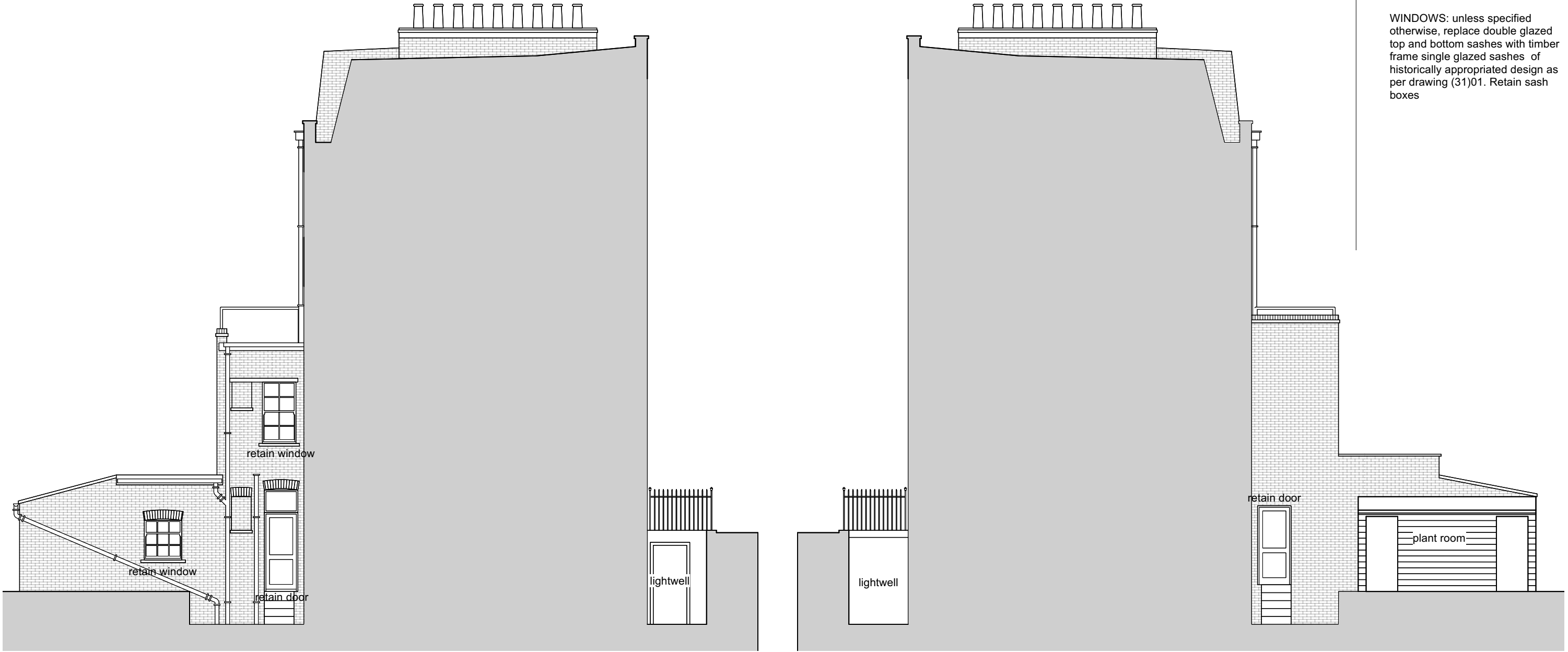


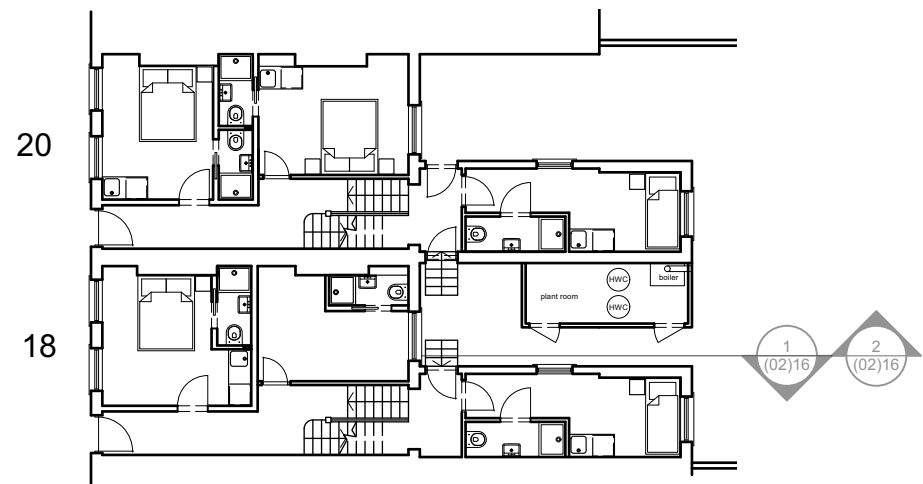
Notes

GENERALLY:  
 WINDOWS: unless specified otherwise, replace double glazed top and bottom sashes with timber frame single glazed sashes of historically appropriated design as per drawing (31)01. Retain sash boxes



**1** Proposed South East Elevation  
 (02)16 Scale: 1:100

**2** Proposed North West Elevation  
 (02)16 Scale: 1:100



Key to sections



A Annotations updated 01/08/2024

Revisions

Kelley House  
 18-20 Royal College Street  
 NW1

Proposed Side Elevations no18  
 No18

**ROGER MEARS ARCHITECTS LLP**  
 Union Chapel, Compton Avenue London N1 2XD

rma@rmears.co.uk tel 020 7359 8222  
 www.rmears.co.uk © Roger Mears Architects LLP

Date	Scale
Sep 2024	1:100@A3

Job No.	Dwg No.	Rev
2245	(02)16	A