

Notes

GENERALLY:

WINDOWS: unless specified otherwise, replace double glazed top and bottom sashes with timber frame single glazed sashes of historically appropriate design as per drawing (31)01. Retain sash boxes

F	Rear terrace doors updated	13/12/2024
E	lightwell windows updated	18/11/2024
D	Basement door and window aligned with windows above	27/08/2024
C	Annotations updated	01/08/2024
B	Remove Critall options and in Bsmt and added french door a separate sash window	10/07/2024

Revisions

Kelley House
18-20 Royal College Street
NW1

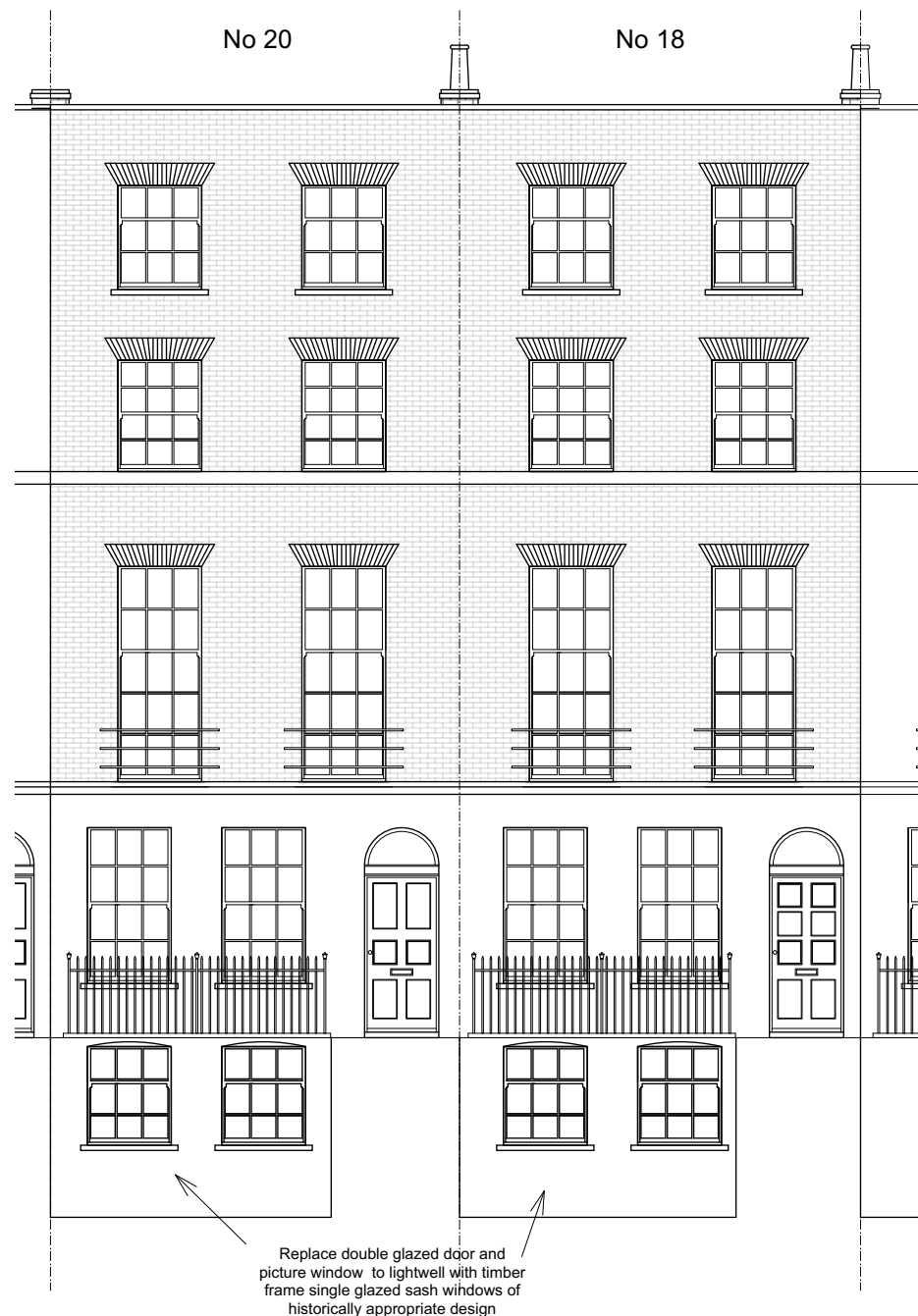
Proposed Elevations

ROGER MEARS ARCHITECTS LLP
Union Chapel, Compton Avenue London N1 2XD

rma@rmears.co.uk tel 020 7359 8222
www.rmears.co.uk © Roger Mears Architects LLP

Date	Scale
Sep 2024	1:100@A3

Job No.	Dwg No.	Rev
2245	(02)15	F



1 Proposed South/West Front Elevation
(02)15 Scale: 1:100



2 Proposed North/East Elevation
(02)15 Scale: 1:100

