



The Coach House, The Square, Sawbridgeworth, Hertfordshire, CM21 9AE

Dear Steve,

REF: 73 Redington Road, NW3 7RP

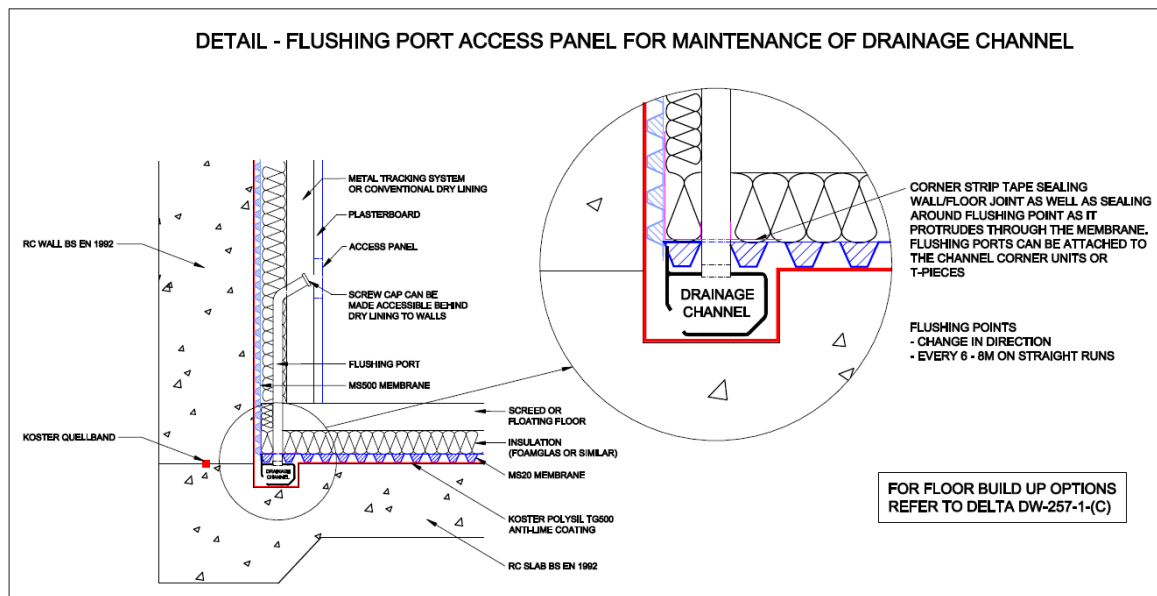
As discussed, we intend to supply a cavity drain membrane system to the area where the floor has been lowered.

The walls will receive a coating of a tanking slurry to stem the passage of moisture into the internal environment. A membrane system can be applied to the walls and floor utilizing a drainage channel around the perimeter or if possible, a 110mm modular drainage system that will connect to an externally sited sump chamber.

The sump chamber will house a dual pumping system that will mechanically lift the water out of the retaining area.

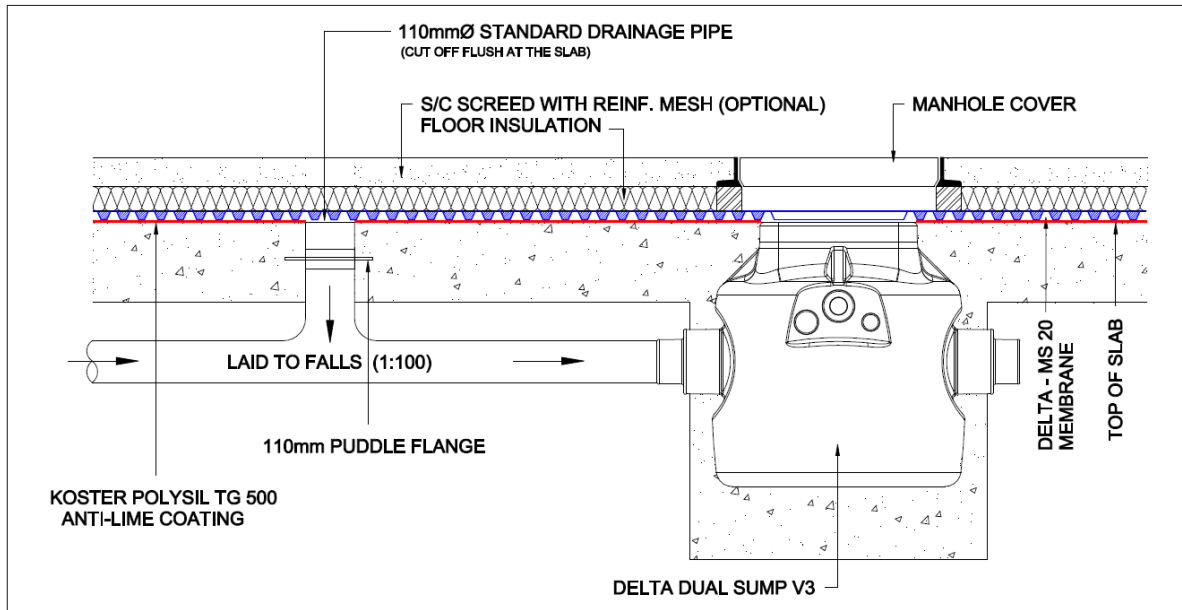
A unbonded screed can be cast across the floor membrane allowing for the independent wall lining (IWL) to be fixed into the screed. Ideally, the IWL will be fixed into the screed and ceiling only. However, fixing points can be installed should a restraint be required.

Please find some indicative details below:



DELTA MEMBRANE SYSTEMS LTD.		DRAWING No: DW-163-1-(C)
DELTA HOUSE, MERLIN WAY, NORTH WEALD, EPPING, ESSEX CM16 6HR TEL: 01992 523523 FAX: 01992 523250		DRAWING TITLE: WALL / FLOOR CAVITY DRAIN DETAIL - FLUSHING PORT ACCESS PANEL FOR MAINTENANCE OF DRAINAGE CHANNEL
DRAWING NOTES: All installations to be carried out in strict accordance with manufacturer's installation instructions. For further assistance contact Delta Technical on 01992 523 523 or email technical@deltamembranes.com	OFFICE USE: REVISION No: 1 Drawn By: Checked By: Scale: REVISION DATE: June 2017 System Files: PDF / DWG	DRAWING NOTE: This drawing is for illustrative purposes only. Drawing not to scale.
This drawing is the property of Delta Membrane Systems Ltd and must not be loaned or copied without prior written consent		PROJECT / COMMENTS:

Perimeter channel cavity drain option



DELTA MEMBRANE SYSTEMS LTD.		DRAWING No: DW-128A-1- (C)	
		DRAWING TITLE: MODULAR DRAINAGE TO SUMP	
DELTA HOUSE, MERLIN WAY, NORTH WEALD, EPPING, ESSEX CM16 6HR TEL: 01992 523523 FAX: 01992 523250		OFFICE USE:	DRAWING NOTE:
DRAWING NOTES: All installations to be carried out in strict accordance with manufacturer's Installation Instructions. For further assistance contact Delta Technical on 01992 523 523 or email technical@deltamembranes.com	REVISION No: 1	Drawn By:	This drawing is for illustrative purposes only. Drawing not to scale.
	REVISION DATE: June 2017	Checked By:	
		Scale:	PROJECT / COMMENTS:
		System File: PDF / DWG	

This drawing is the property of Delta Membrane Systems Ltd and must not be loaned or copied without prior written consent

Modular drainage channel option

I hope this information helps, please do not hesitate to contact me should you have any further questions or queries.

Kind Regards

Ben Fordham

CSSW, CSTDB, WDS