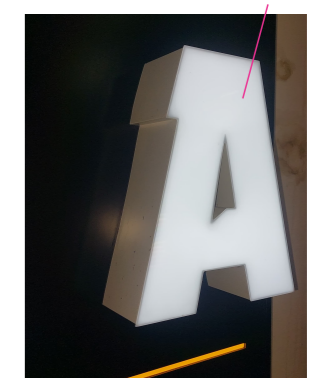


RIMLESS NON ILLUMINATED
(SIDES OF LETTERS WILL BE BLACK)

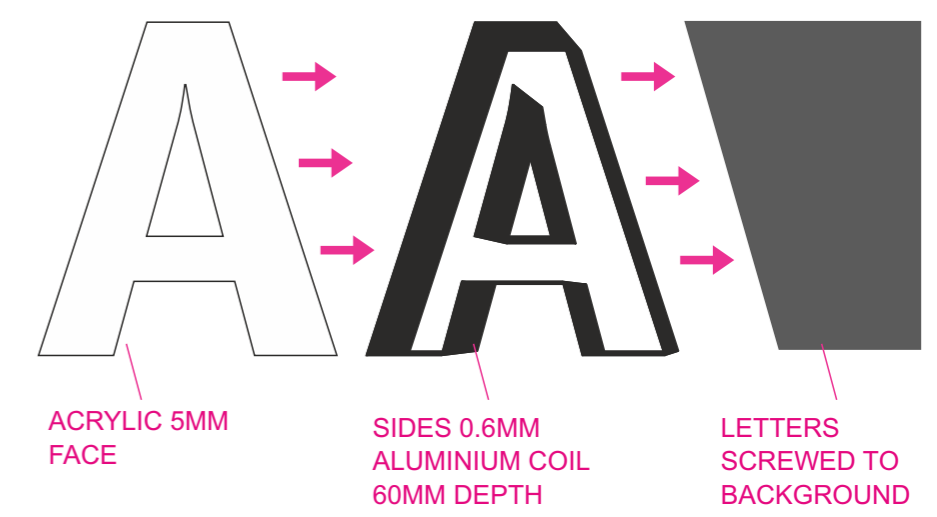


TROUGH LIGHT ABOVE SIGN
45MM DIAMETER Fully IP66-rated



24v 6000k
200cd/m2 (Luminance)

LAYOUT FOR LETTERS:



SIGN SPECIFICATION:

- BACKGROUND ALUMINIUM COMPOSITE TRAY | COLOUR: ANTHRACITE GREY (RAL: 7016)
- 아토 ATTO 3D BUILT UP LETTERS (NON ILLUMINATED) + BLACK COIL ON SIDES OF LETTERS
- TROUGH LIGHT ABOVE SIGN Fully IP66-rated 24V 6000K, 200cd/m2
- DOOR NUMBER AND "KOREAN CUISINE CLEVELAND STREET" WILL BE ORANGE STICKERS (NON ILLUMINATED)

PROJECTION SIGN (NON ILLUMINATED):



Thickness
160mm



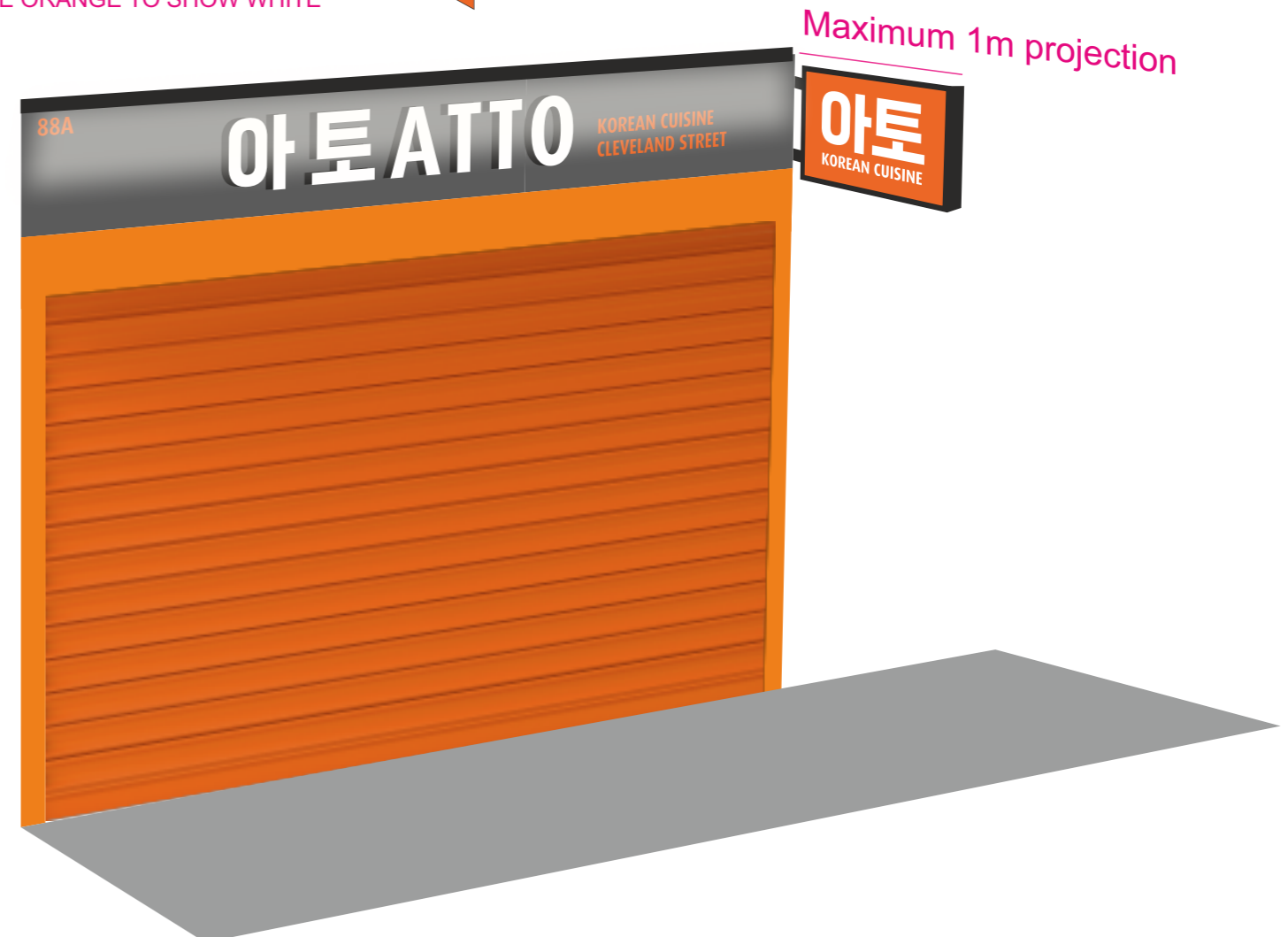
SUPPORT ARMS SECURED TO WALL
USING SCREW FIXTURES

STAINLESS STEEL FRAME

ACRYLIC 5MM
FACE WITH
ORANGE VINYL
+ LOGO AND WRITING CUT OUT
OF THE ORANGE TO SHOW WHITE



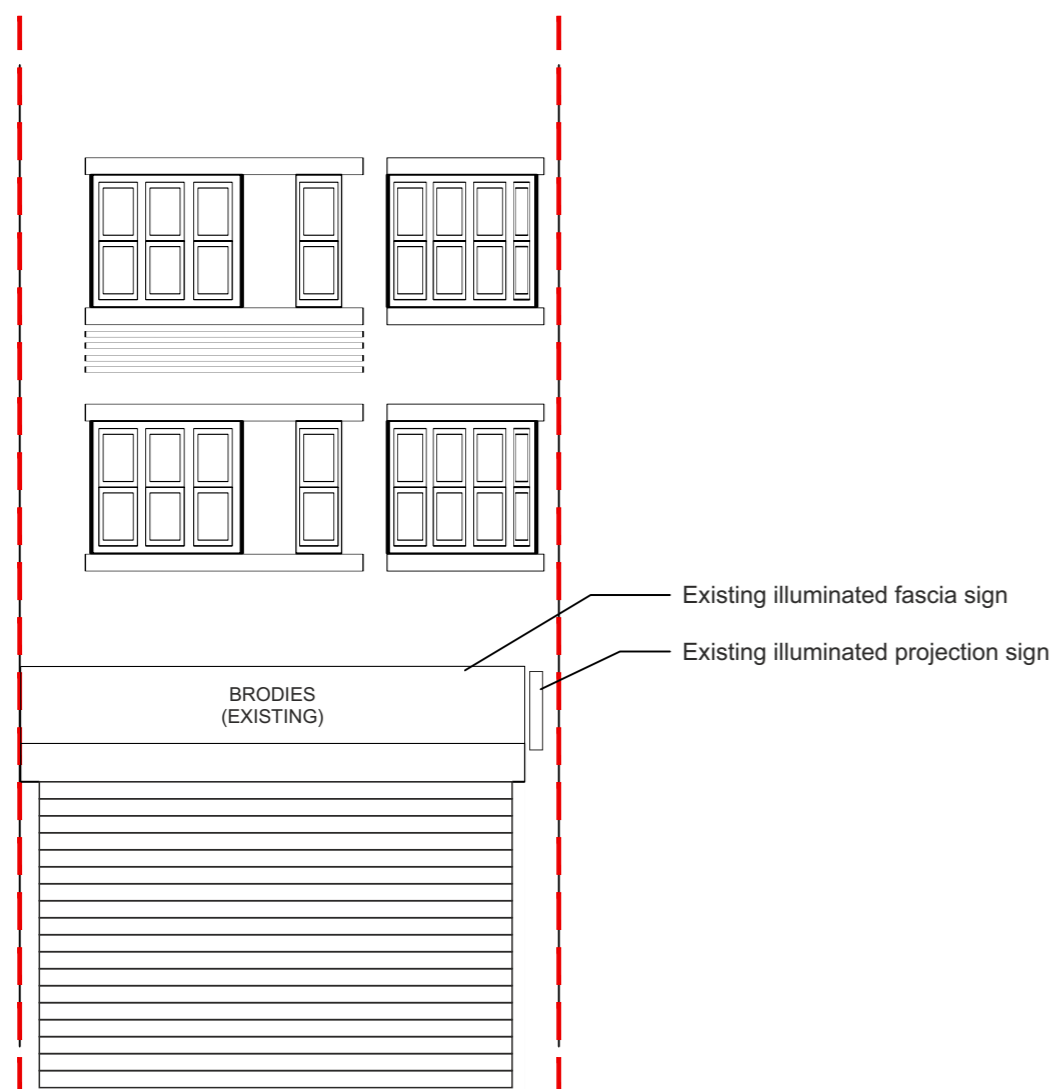
Maximum 1m projection



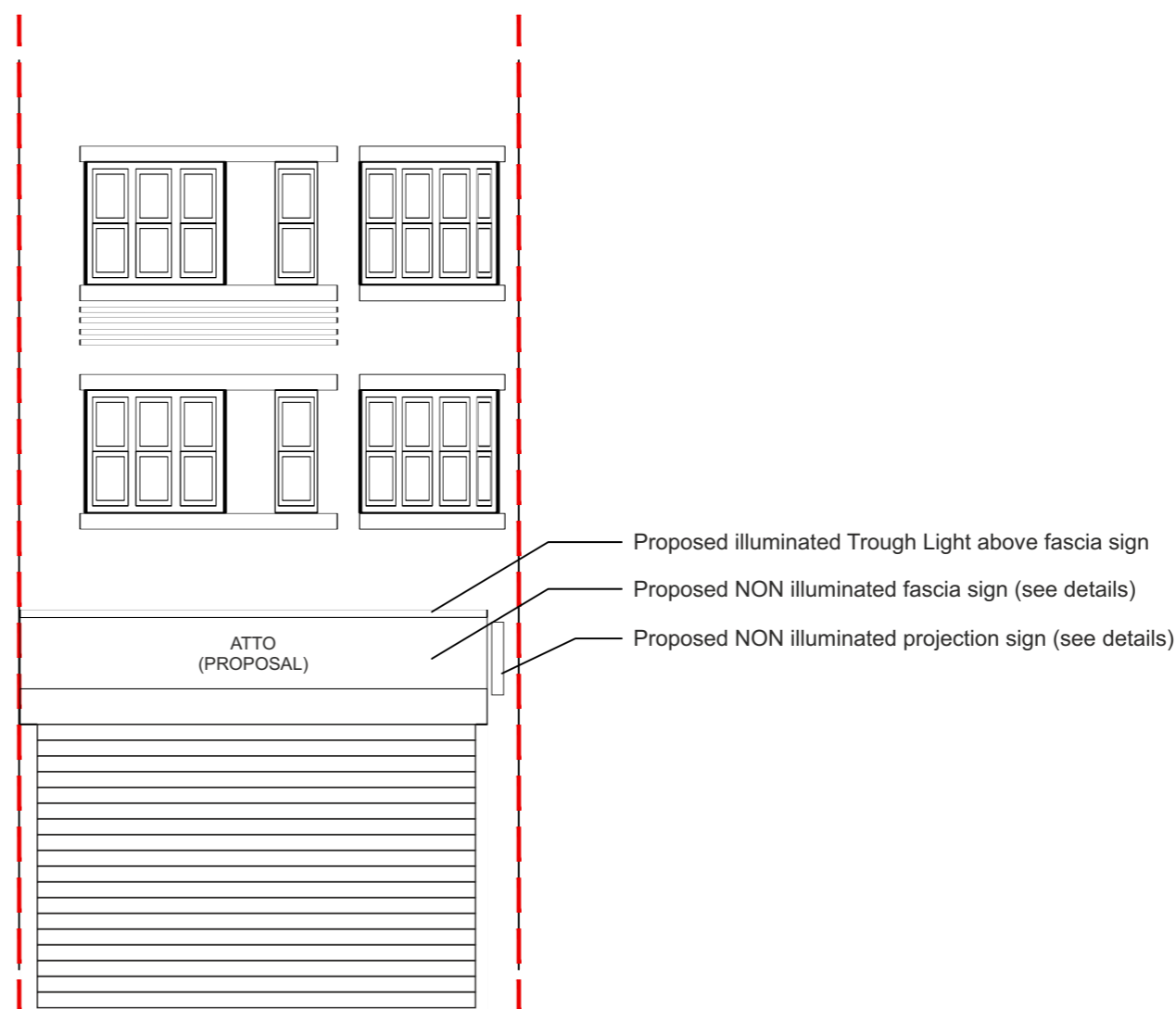
SIGN SPECIFICATION:

- BACKGROUND ALUMINIUM COMPOSITE TRAY | COLOUR: ANTHRACITE GREY (RAL: 7016)
- 아토 ATTO 3D BUILT UP LETTERS (NON ILLUMINATED) + BLACK COIL ON SIDES OF LETTERS
- TROUGH LIGHT ABOVE SIGN Fully IP66-rated 24V 6000K, 200cd/m2
- DOOR NUMBER AND "KOREAN CUISINE CLEVELAND STREET" WILL BE ORANGE STICKERS (NON ILLUMINATED)

EXISTING SIGNAGE



PROPOSED SIGNAGE PROPOSED SIGNAGE



SIGN SPECIFICATION:

- BACKGROUND ALUMINIUM COMPOSITE TRAY | COLOUR: ANTHRACITE GREY (RAL: 7016)
- 아토 ATTO 3D BUILT UP LETTERS (NON ILLUMINATED) + BLACK COIL ON SIDES OF LETTERS
- TROUGH LIGHT ABOVE SIGN Fully IP66-rated 24V 6000K, 200cd/m2
- DOOR NUMBER AND "KOREAN CUISINE CLEVELAND STREET" WILL BE ORANGE STICKERS (NON ILLUMINATED)