

Do not scale from this drawing

© Brookes Architects Limited (BAL), all rights reserved.

This drawing has been prepared for the use of BAL's client specifically for the site listed below. It may not be used, modified, reproduced or relied upon by third parties.

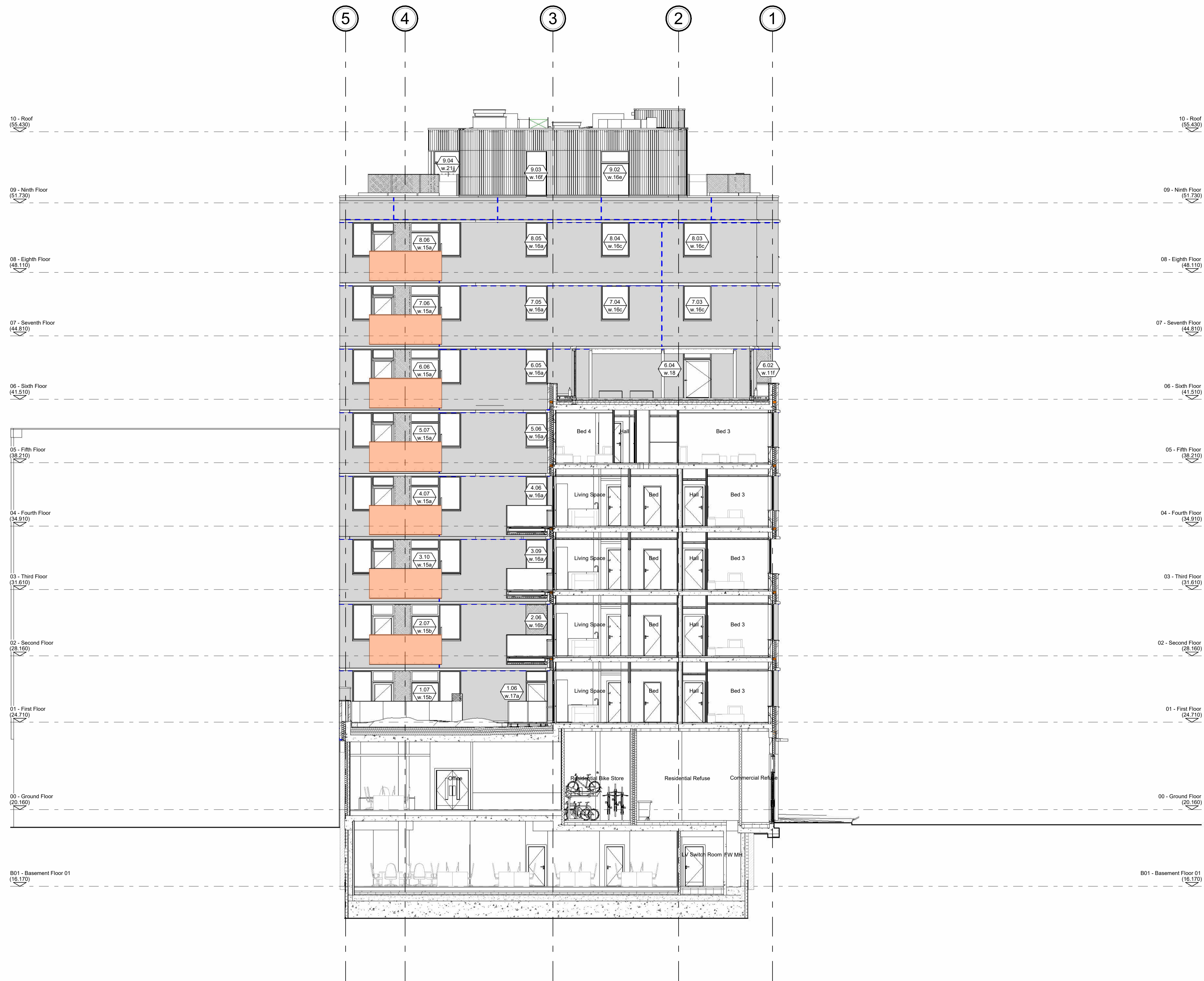
Do not scale from this drawing. All areas are approximate. All dimensions are to be verified on site prior to construction. Responsibility for the reproduction of this drawing lies with the recipient to check that all information has been replicated in full when compared with the original.

This drawing must be read in conjunction with all other relevant consultants' information.

Any discrepancies and/or ambiguities within this drawing, or between it and information given elsewhere, must be reported immediately to BAL for clarification before proceeding.

All works are to be carried out in accordance with current British Standards, Building Regulations and relevant Codes of Practice.

Refer to the Construction (Design and Management) documentation where applicable. It is assumed that all works will be carried out by a competent contractor working, where necessary, to an approved method statement.



BOLT-ON BALCONY LOCATIONS

- BALCONY TYPE 1
- BALCONY TYPE 2
- BALCONY TYPE 3

0m 2m 4m 6m 8m 10m

Visual Scale 1:100

CONSTRUCTION

Rev	Status	Description	Issued	Drawn/Checked
C3	Co	General Section Updates	29.04.24	KTI/AW
C2	Co	Movement joint tags and dims added.	28.03.24	KTI/AW
C1	Co	GA Section Updates	13.02.24	KTI/AW
P2	Pr	Preliminary Issue	25.07.23	TN/TL
P1	Pr	Work-in-progress	23.04.23	TN/TL

Client
Myco

Project No.
5361

Project
**Acorn House
Gray's Inn Road
London, WC1X 8DP**

Drawing
**GA Sections 1-100
Section D**

Scale	Date	Drawn	Checked
1 : 100@A1	Jul '23	TN	TL

Brookes Architects

Unit 1 - 56 Glentham Road
London SW13 9JJ
T 020 8487 1223
www.brookesarchitects.co.uk

5361-BAL-XX-ZZ-DR-A-05-0104

Revision
C3
Co
Status