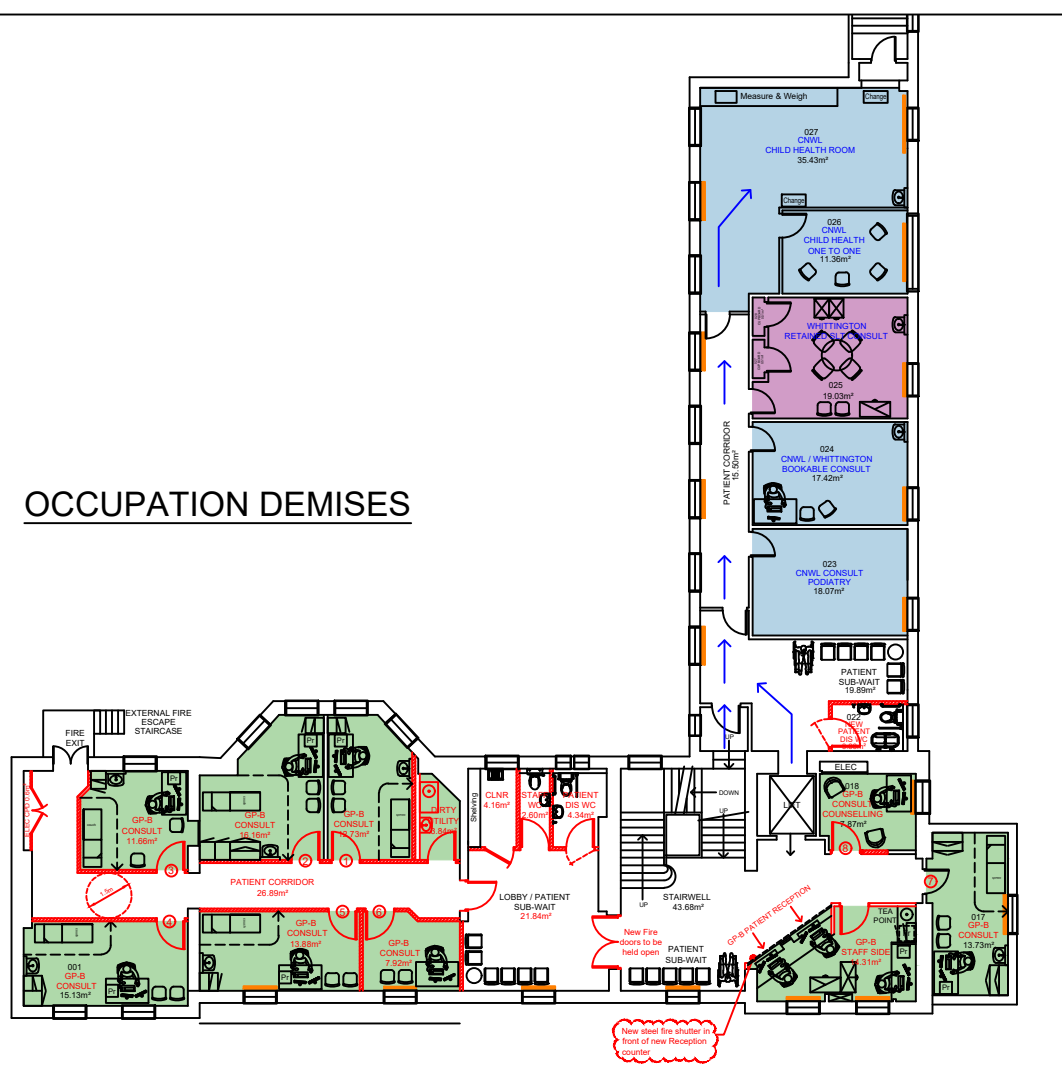


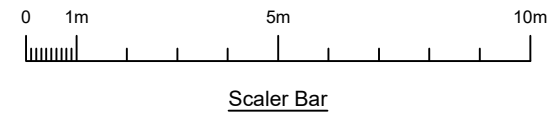
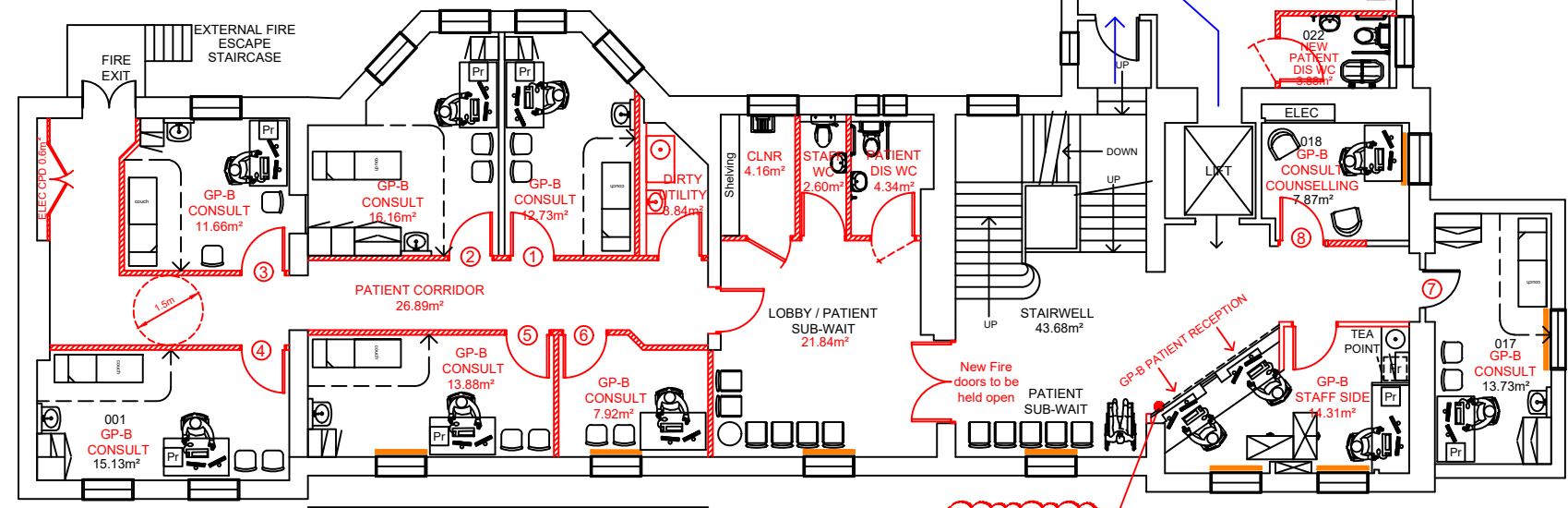
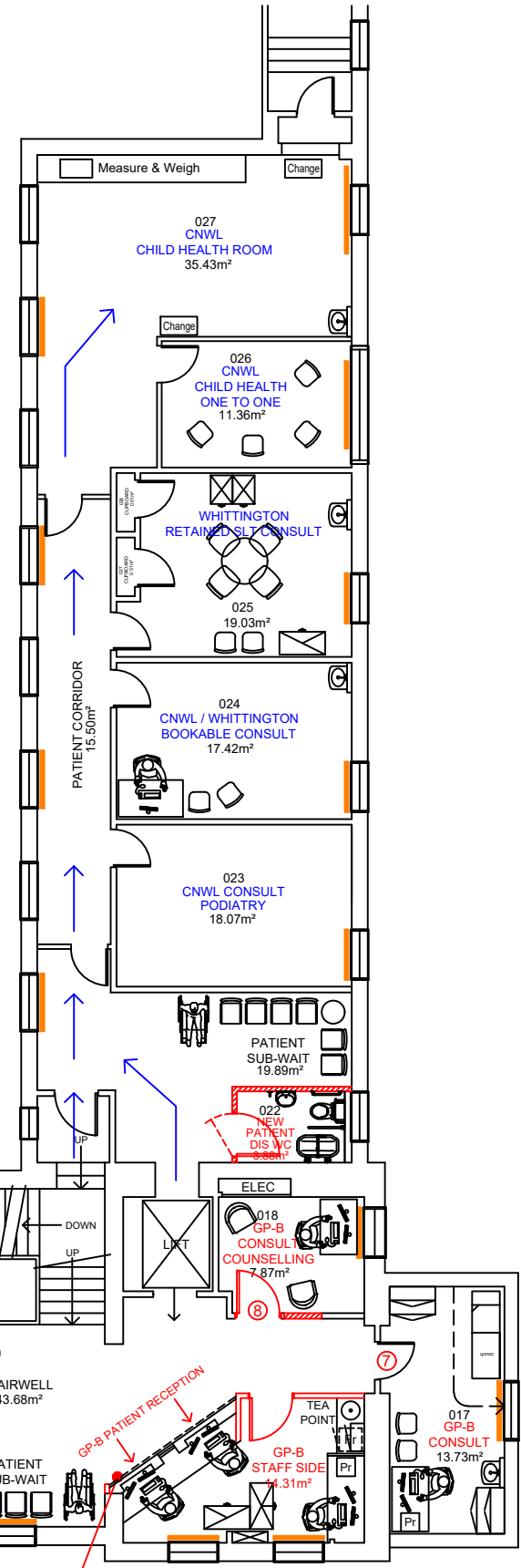
OCCUPATION DEMISES



LEGEND:

- BLOOMSBURY GP PRACTICE
- GP-B PRACTICE
- GP A & GP B SHARED
- CNWL
- WHITTINGTON SLT
- WHITTINGTON DENTAL
- CAMDEN & ISLINGTON NHS TRUST
- THE LISTENING PLACE
- VACANT
- UCLH PHLEBOTOMY

FIRST FLOOR (1st)



1st

Option 4

NHS
 North Central London
 Integrated Care Board

Central and North West London
 NHS Foundation Trust

Revision	Date	Description	Dwg	Chk
J	05.03.24	Legend updated	LAR	TP
H	04.03.24	Updated following SH/TP Teams Meeting with B GP Practice on 29.02.24	LAR	TP
G	23.10.23	Updated following OS email following OS/SH review on 19.10.23	LAR	TP
F	23.10.23	Updated following OS email following OS/SH review on 19.10.23	LAR	TP
E	09.10.23	Updated following Client review of Neighbourhood requirements	LAR	TP
D	29.08.23	Updated following: (i) Client Teams meeting on 24.08.23 for Neighbourhood model (ii) following site visit with Council Listed Buildings Officer on 23.08.23	LAR	TP
C	19.06.23	Updated following site visit with MM on 09.06.23	LAR	TP
B	05.07.22	Updated following CNWL feedback from JPL	LAR	TP
A	22.03.22	Updated following Teams Meeting with all Occupiers on 21.03.22	LAR	TP

Ingleton Wood
 Vision, form and function

London
 Billericay
 Cambridge
 Colchester
 Norwich
 Oxford

London
 10-12 Alle Street
 London E1 8DE
 1:020 7480 4400

www.ingletonwood.co.uk

Project:
 HUNTER STREET HEALTH CENTRE
 HUNTER STREET

Drawing Title:
 PROPOSED FIRST FLOOR PLAN
 OPTION FOUR

Client:
 NHS PROPERTY SERVICES LTD / CAMDEN CCG

Drawn	Checked	Date	Scale	Sheet No.	Page No.
LAR	TP	25.05.21	1:150	A3	

Job No.	Dwg No.	Stage	Revision
812679	43		J