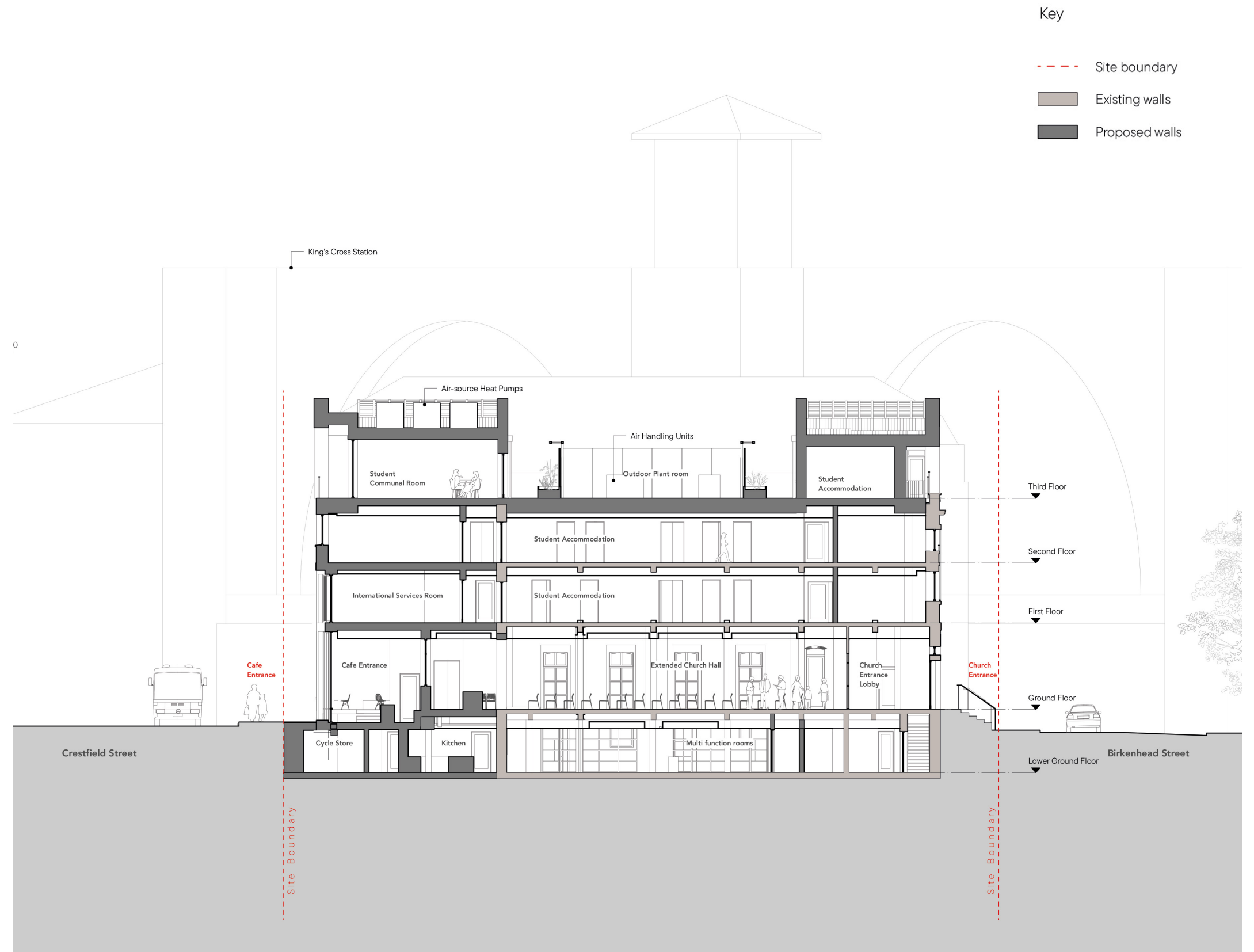
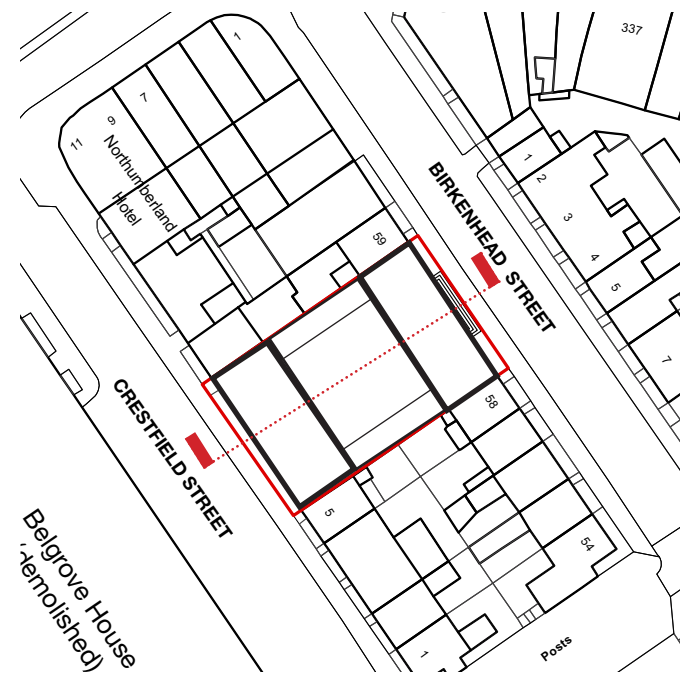


6.3 Proposed Sections & Elevations

Proposed Long Section

The proposed long section shows the rebuilt Crestfield Street extension which not only enabled a new lower ground level that optimizes the volume available on site, but also allows the extension floors to link to the main church floors with level access.

To maximize internal floor areas available for church/ community use and student accommodation, heating and cooling plant equipment are positioned in sunken areas of the Crestfield Street gabled roof which is concealed from public view at street level.



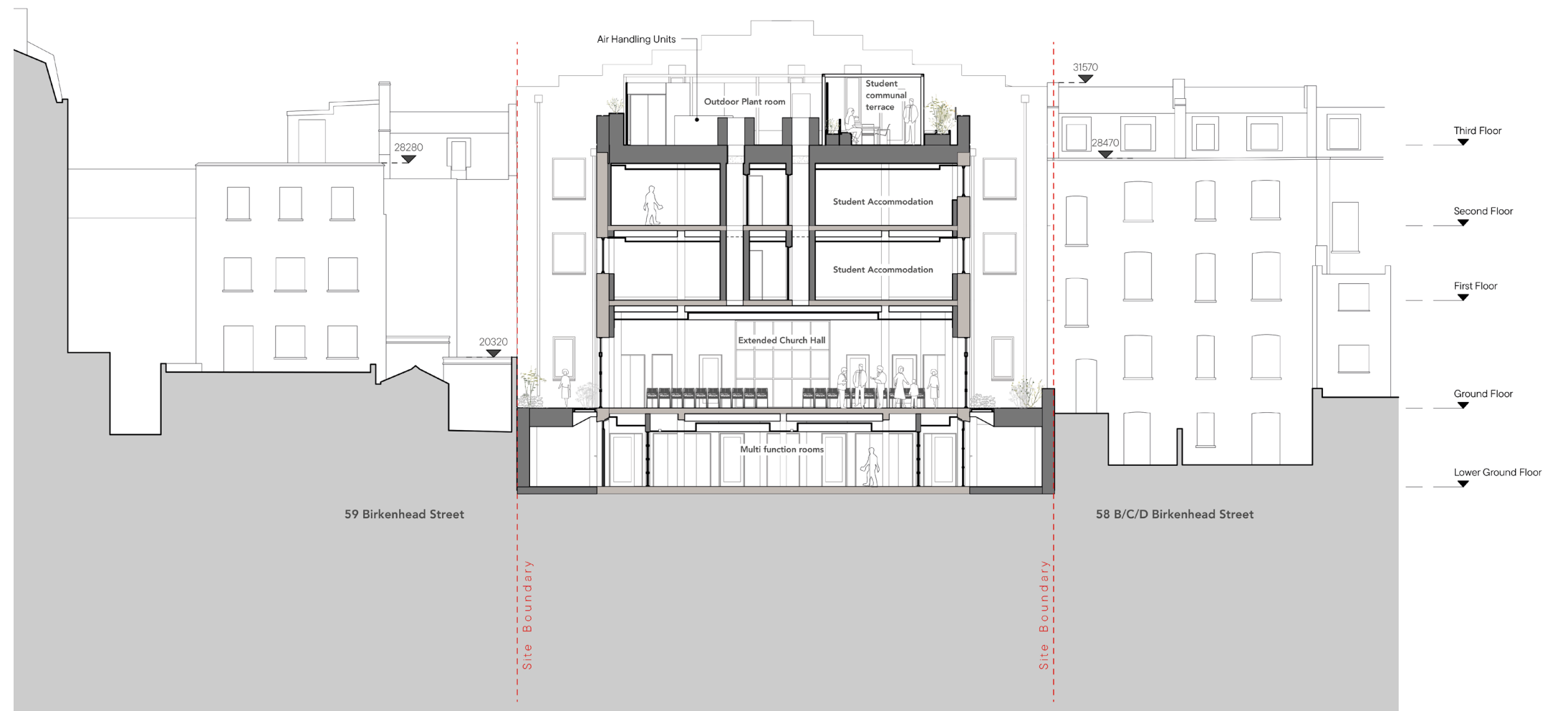
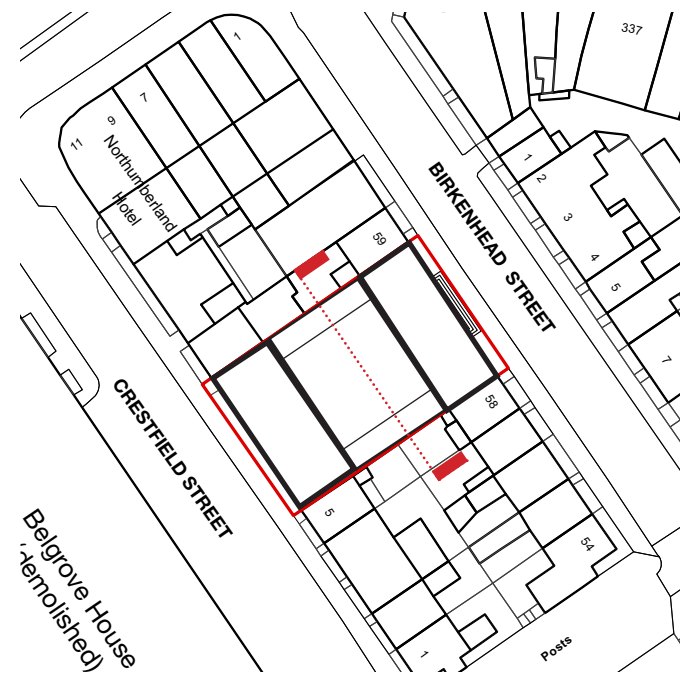
6.3 Proposed Sections & Elevations

Proposed Cross Section

The proposed cross section shows internalised lower ground floor spaces of the north and south light wells, forming roof gardens that are accessible from the refurbished church hall, as well as creating joyful glimpses when viewing from the church hall windows.

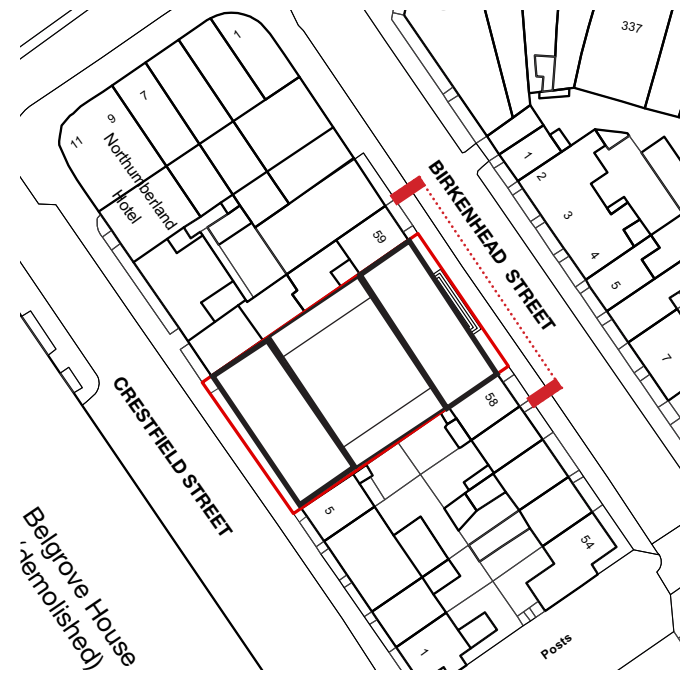
Key

- - - Site boundary
- Existing walls
- Proposed walls



6.3 Proposed Sections & Elevations

Proposed Birkenhead Street Elevation



Key



58 B/C/D
Birkenhead Street

59 Birkenhead
Street

6.3 Proposed Sections & Elevations

Birkenhead Street Facade Material Palette

The palette of new materials are closely related to the existing facade, while detailed in a more contemporary expression. The materials of the new extension are also used at the Crestfield Street facade to tie the new elements of the facade together.

Extension

- Brickwork to match Crestfield Street facade
- Brick corbelling roof parapet

Balustrades

- In metal, colour to match window frame

New Windows

- New metal windows with bronze finish

Existing Windows

- Existing windows to be replaced by thermally broken double glazed units. Rendered surrounds to be cleaned and repainted

Heritage Details

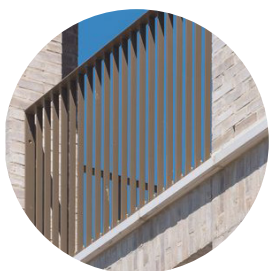
- Floor bands in stone to be cleaned and repainted

Ground Floor Entrance

- Existing arch window removed, to be replaced by Pre-cast stone cladding with engraved signage, coherent to refurbished stone door surrounds underneath

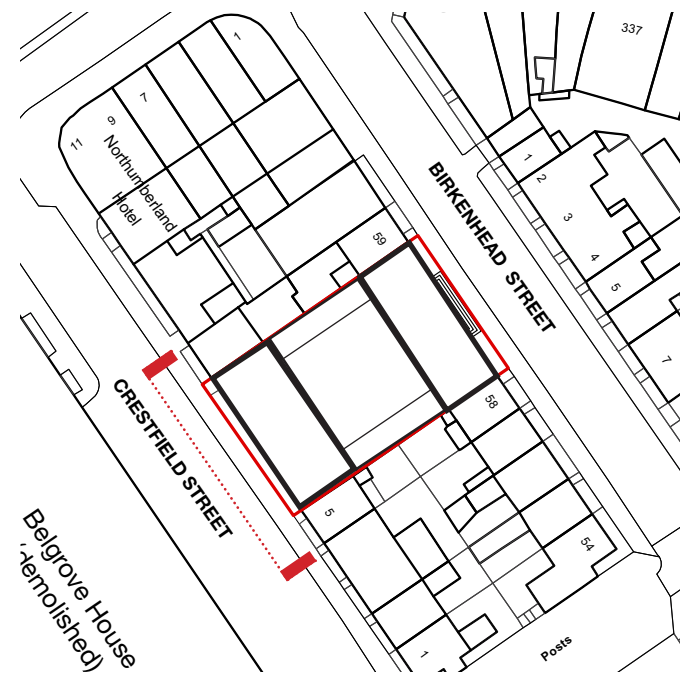


Proposed Birkenhead Street coloured elevation



6.3 Proposed Sections & Elevations

Proposed Crestfield Street Elevation



Key

6.3 Proposed Sections & Elevations

Crestfield Street Facade Material Palette

The materials of the new extension are closely related to the Birkenhead Street third floor extension, meanwhile the liberal fenestrations and longer spanning pre-cast elements formed a contemporary disposition in anticipation of evolving demands from the 21st century.

Brickwork

- English bonds highlight softness, and the tonal pattern suggests a sense of depth

Balustrades

- In metal, colour to match window frame

Recessed brick panel

- Supported by pre-cast lintel clad with gauged brick panels

Windows

- New thermally broken double glazed units with bronze finish

Pre-cast elements

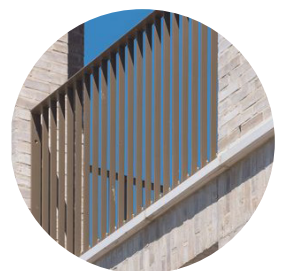
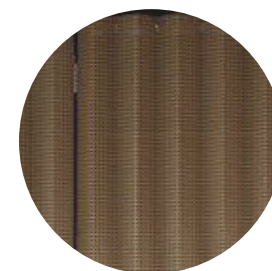
- Pigmented pre-cast concrete lintel, plus modules forming the pre-cast cross

Acoustically attenuated metal ventilators

- Facing perforated metal panel in bronze finish



Proposed Crestfield Street coloured elevation



6.4 Facade Detail

Birkenhead Street Facade Details

Engraved Brick Signage

A new brick recessed panel with engraved lettering represents a new phase for King's Cross Methodist Church which co-relates to the retained year plate below.

Inset Balconies

The inset balconies featured in the third floor extension divert attention to the central line of facade, signalling coherence of the existing facade symmetry. The balconies should have facing brickwork on all covered wall surfaces so to maintain a simple material palette and a unified outlook. New, minimal metal balustrades with finishes match window frames provide safety guarding.

