

THIS DRAWING IS INDICATIVE AND REPRESENTS ONLY THE DESIGN INTENT, THE CONTRACTOR MUST PRODUCE FULLY CO-ORDINATED WORKING / INSTALLATION DRAWINGS AS REFERRED TO IN THE CONTRACT DOCUMENTATION

NOTES

- DO NOT SCALE FROM THIS DRAWING. ALL DIMENSIONS INDICATED ARE IN MILLIMETRES
- DRAWING TO BE READ IN CONJUNCTION WITH SPECIFICATION, DOCUMENTATION, DRAWINGS & ALL RELEVANT BRITISH STANDARD DOCUMENTS
- ALL ELECTRICAL WORKS SHALL COMPLY WITH 18TH EDITION IET WIRING REGS BS7671:2018+A2:2022. INCLUDING ALL CURRENT AMENDMENTS AND GUIDANCE NOTES AND THE CURRENT BUILDING STANDARDS REGULATIONS
- THE INSTALLATION SHALL ONLY BE CERTIFIED BY A PERSON OR A COMPANY HAVING MEMBERSHIP TO S.E.L.E.C.T. OR N.I.C.E.I.C. OR SIMILAR ELECTRICAL SCHEMES
- ELECTRICAL ACCESSORY POSITIONS ARE INDICATIVE ONLY. ELECTRICAL CONTRACTOR TO REFER TO ARCHITECTS SETTING OUT DRAWINGS FOR EXACT DIMENSIONS / LOCATIONS.
- CONTRACTOR TO ALLOW FOR COORDINATION OF ALL MECHANICAL AND ELECTRICAL SERVICES THROUGHOUT.
- CONTRACTOR TO ALLOW FOR SITE COORDINATION WITH OTHER TRADE/SERVICE INSTALLATIONS.
- ALL FINAL CIRCUIT WIRING TO BE MULTICORE FLEXISHEILD TYPE.
- SOCKET / DATA OUTLETS TO BE FLUSH MOUNTED THROUGHOUT.
- SOCKET OUTLET FINISHES TBC BY INTERIOR DESIGNER.
- SOCKET OUTLETS TO ALL PLANT / STORE SPACES TO BE SURFACE MOUNTED METAL CLAD.
- ALL ELECTRICAL OUTLETS TO BE FULLY AGREED / SIGNED OFF BY INTERIOR DESIGNER PRIOR TO INSTALLATION.
- ALL CABLE / TV / DATA OUTLETS THROUGHOUT TO MATCH OUTLET FINISH WITHIN GIVEN SPACE.
- ALL FINAL WAP LOCATIONS TO BE CONFIRMED WITH AV SPECIALIST. ACCESS POINTS & ASSOCIATED POWER SERVICES TO BE CEILING MOUNTED.
- ACCESSORY PLATES WITHIN THE KITCHEN SHALL BE ENGRAVED WITH THE NAME OF EQUIPMENT SERVED (5mm BLACK LETTERING).
- THE ELECTRICAL CONTRACTOR SHALL ENSURE THAT SOCKET OUTLETS ETC. ARE NOT INSTALLED BACK TO BACK TO ENSURE THE ACOUSTIC INTEGRITY OF THE WALLS BETWEEN THEM IS MAINTAINED.
- EVERY SERVICE, FITTING AND PIECE OF EQUIPMENT IS PROVIDED SO AS TO SERVE A PURPOSE OF THE BUILDING REGULATIONS AND IS TO BE DESIGNED, INSTALLED AND COMMISSIONED IN SUCH A WAY TO FULFIL THOSE PURPOSES.
- ELECTRICAL CONTRACTOR TO ALLOW FOR INSTALLING, TESTING & COMMISSIONING OF ALL ACCESSORIES. THEN REMOVAL TO ALLOW FOR FINAL DECORATION.
- POWER SUPPLIES FOR ALL MECHANICAL PLANT ARE SUBJECT TO CHANGE, REFER TO MECHANICAL LAYOUTS FOR DETAILS.
- THIS DRAWING DOES NOT REMOVE THE CONTRACTORS RESPONSIBILITY TO:
 - PRODUCE THEIR OWN WORKING DRAWINGS.
 - TAKE ALL SITE DIMENSIONS AS REQUIRED.
 - COORDINATE WITH OTHER SERVICES AND THE BUILDING STRUCTURE

2 COMPARTMENT METALLIC SKIRTING TRUNKING
 CEILING MOUNTED DOUBLE DATA OUTLETS FOR CEILING MICROPHONE. CABLED TO A PoE SWITCH
 SWITCHED FUSE SPUR LINKED TO LIGHTING CONTROL SWITCH FOR INTEGRATED JOINERY LIGHTING
 EXITING DESKS HAVE HARD WIRED POWER & DATA OUTLETS. CONTRACTOR TO ALLOW FOR REMOVAL OF HARDWIRED OUTLETS & ALL ASSOCIATED FIXINGS AS REQUIRED WHERE FURNITURE IS BEING RE-POSITIONED & RE-FIX ONCE RE-POSITIONED.
 CABLEWAYS TO BE PULLED BACK/EXTENDED WITHIN FLOOR VOID AS REQUIRED.

SWITCHED FUSE SPUR LINKED TO LIGHTING CONTROL SWITCH FOR INTEGRATED JOINERY LIGHTING

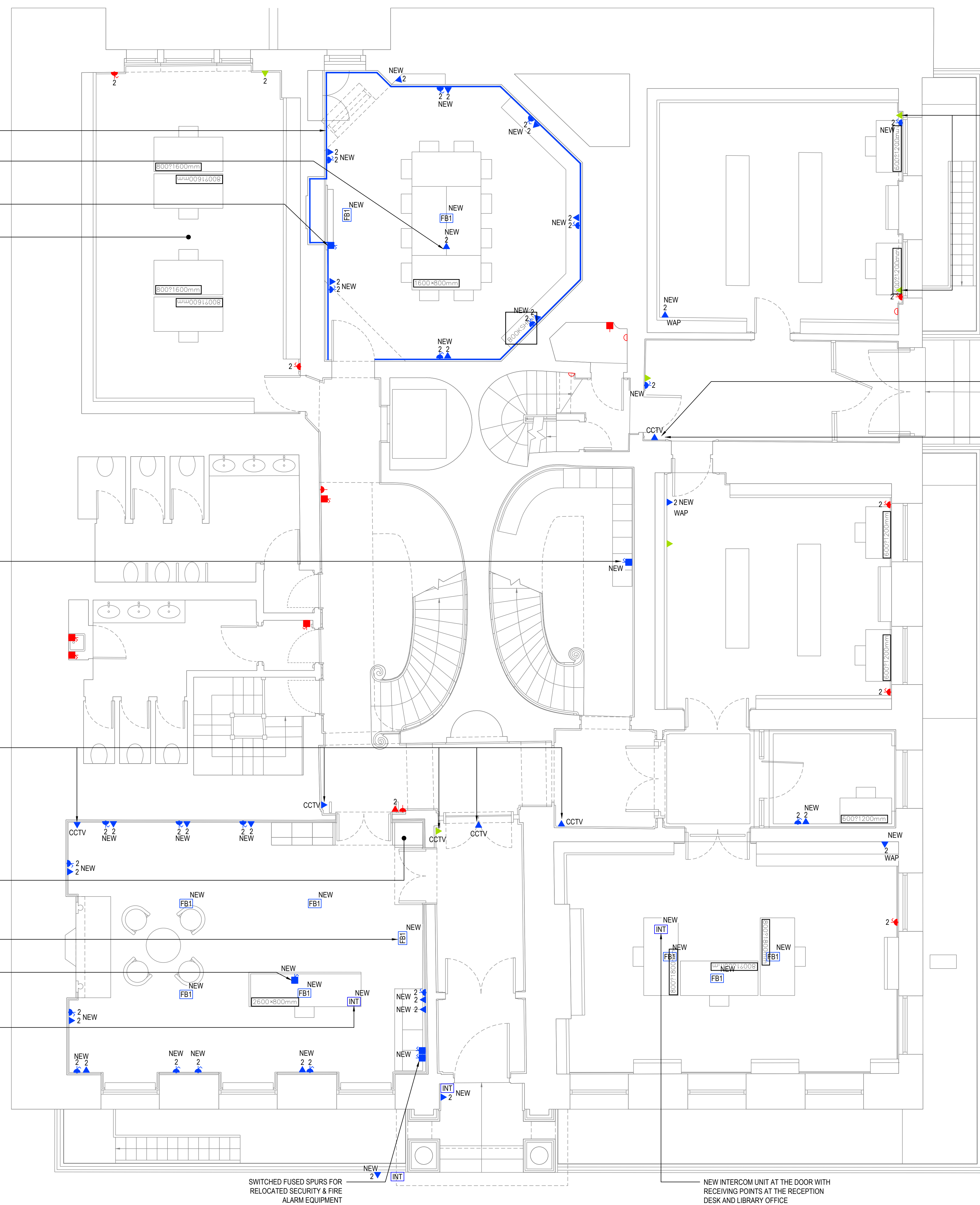
DATA OUTLET AT HL

ALL EQUIPMENT & ASSOCIATED POWER & DATA OUTLETS TO BE RELOCATED TO NEW CUPBOARD. REFER TO 310311-HAH-XX-00-D-E-06111

POWER & DATA PROVIDED FOR PRINTER & FRANKING MACHINE. ARCHITECT TO CONFIRM FINAL LOCATIONS

SWITCHED FUSE SPUR LINKED TO LIGHTING CONTROL SWITCH FOR INTEGRATED JOINERY LIGHTING

NEW INTERCOM UNIT AT THE DOOR WITH RECEIVING POINTS AT THE RECEPTION DESK AND LIBRARY OFFICE.



DOUBLE DATA POINT RE-CABLED FROM SWITCH VIA BASEMENT

DATA OUTLET AT HL

CCTV CAMERA CABLE CURRENTLY SURFACE MOUNTED ON THE WALL WITHIN MINI TRUNKING. CABLE TO BE PULLED BACK, WALL CHASED AND CABLE RE-INSTALLED UP TO CCTV POSITION

NEW SMALL POWER & DATA LEGEND

ALL NEW ELECTRICAL ELEMENTS NOTED AS NEW & COLOURED BLUE

- NEW SINGLE SWITCHED SOCKET OUTLET
- 2 NEW TWIN SWITCHED SOCKET OUTLET
- USB SOCKET OUTLET c/w TWIN USB PORT
- IP NEW IP66 RATED EXTERNAL SOCKET OUTLET
- NEW UNSWITCHED FUSED CONNECTION UNIT (OPTIONAL PILOT LIGHT)
- NEW SWITCHED FUSED CONNECTION UNIT (OPTIONAL PILOT LIGHT)
- FB1 3 COMPARTMENT FLOORBOX c/w 2 No. TWIN 13A SOCKET OUTLETS & 2 No. TWIN DATA OUTLETS
- FB2 1 COMPARTMENT FLOORBOX c/w TWIN SOCKET OUTLET
- T TELEPHONE POINT
- 2 TWIN DATA OUTLET
- PANELBOARD
- DISTRIBUTION BOARD
- NEW IP BASED INTERCOM SYSTEM TO BE INSTALLED WITH NEW POLISHED BRASS FINISHED EXTERNAL UNIT AND INTERNAL RECEIVING POINTS INSTALLED TO THE DESK OF THE RECEPTION AND LIBRARY.
- INT ELECTRICAL CONTRACTOR TO CHASE WALL TO HIGH LEVEL AND INSTALL 2x25mm CABLE CONDUIT TO BELOW FLOOR TO ALLOW SPEAKER CABLEING TO BE INSTALLED BY AV SPECIALIST

EXISTING SMALL POWER & DATA LEGEND

- SINGLE SWITCHED SOCKET OUTLET
- 2 TWIN SWITCHED SOCKET OUTLET
- SOCKET OUTLET c/w TWIN USB PORT
- IP IP66 RATED EXTERNAL SOCKET OUTLET
- UNSWITCHED FUSED CONNECTION UNIT (OPTIONAL PILOT LIGHT)
- SWITCHED FUSED CONNECTION UNIT (OPTIONAL PILOT LIGHT)
- FB FLOORBOX
- T TELEPHONE POINT
- 2 TWIN DATA OUTLET

ABBREVIATIONS

- CV CEILING VOID
- LL LOW LEVEL
- ML MID LEVEL
- HL HIGH LEVEL

P03	UPDATED TENDER ISSUE	PS	AJ	AJ	16.12.24
P02	TENDER ISSUE	WK	TD	AJ	05.09.23
P01	ISSUED TO ARCHITECT FOR COMMENT/ APPROVAL	WK	TD	AJ	22.08.23
REV	DESCRIPTION	BY	CHK	APP	DATE

Project Status: **LBC SUBMISSION**

The Multi-disciplinary Engineering Consultancy
h HARLEY HADDOW
 Unit A2, Hatchers Yard, 9 Tanner Street
 London, SE1 3LE
 T 44 (0) 203 735 5060
 E london@harleyhaddow.com
 Edinburgh | Glasgow | London | Manchester
 harleyhaddow.com
 Association for Consulting and Engineering Member Firm

Project: 310311
GERMAN HISTORICAL INSTITUTE
17 BLOOMSBURY SQUARE
 Drawing Title:
GROUND FLOOR PROPOSED SMALL POWER & DATA LAYOUT

Scale @ A1	Date	Engineer
1:50	JUNE 2023	AJ
Drawing No.	Revision	
310311-HAH-XX-00-D-E-06210	P03	

THIS DRAWING IS INDICATIVE AND REPRESENTS ONLY THE DESIGN INTENT, THE CONTRACTOR MUST PRODUCE FULLY CO-ORDINATED WORKING / INSTALLATION DRAWINGS AS REFERRED TO IN THE CONTRACT DOCUMENTATION

NOTES

- DO NOT SCALE FROM THIS DRAWING. ALL DIMENSIONS INDICATED ARE IN MILLIMETRES
- DRAWING TO BE READ IN CONJUNCTION WITH SPECIFICATION, DOCUMENTATION, DRAWINGS & ALL RELEVANT BRITISH STANDARD DOCUMENTS
- ALL ELECTRICAL WORKS SHALL COMPLY WITH 18TH EDITION IET WIRING REGS BS7671:2018+A2:2022, INCLUDING ALL CURRENT AMENDMENTS AND GUIDANCE NOTES AND THE CURRENT BUILDING STANDARDS REGULATIONS
- THE INSTALLATION SHALL ONLY BE CERTIFIED BY A PERSON OR A COMPANY HAVING MEMBERSHIP TO S.E.I.E.C.T. OR N.I.C.E.I.C. OR SIMILAR ELECTRICAL SCHEMES
- ELECTRICAL ACCESSORY POSITIONS ARE INDICATIVE ONLY. ELECTRICAL CONTRACTOR TO REFER TO ARCHITECTS SETTING OUT DRAWINGS FOR EXACT DIMENSIONS / LOCATIONS.
- CONTRACTOR TO ALLOW FOR COORDINATION OF ALL MECHANICAL AND ELECTRICAL SERVICES THROUGHOUT.
- CONTRACTOR TO ALLOW FOR SITE COORDINATION WITH OTHER TRADE/SERVICE INSTALLATIONS.
- ALL FINAL CIRCUIT WIRING TO BE MULTICORE FLEXISHEILD TYPE.
- SOCKET / DATA OUTLETS TO BE FLUSH MOUNTED THROUGHOUT.
- SOCKET OUTLET FINISHES TBC BY INTERIOR DESIGNER.
- SOCKET OUTLETS TO ALL PLANT / STORE SPACES TO BE SURFACE MOUNTED METAL CLAD.
- ALL ELECTRICAL OUTLETS TO BE FULLY AGREED / SIGNED OFF BY INTERIOR DESIGNER PRIOR TO INSTALLATION.
- ALL CABLE / TV / DATA OUTLETS THROUGHOUT TO MATCH OUTLET FINISH WITHIN GIVEN SPACE.
- ALL FINAL WAP LOCATIONS TO BE CONFIRMED WITH AV SPECIALIST. ACCESS POINTS & ASSOCIATED POWER SERVICES TO BE CEILING MOUNTED.
- ACCESSORY PLATES WITHIN THE KITCHEN SHALL BE ENGRAVED WITH THE NAME OF EQUIPMENT SERVED (5mm BLACK LETTERING).
- THE ELECTRICAL CONTRACTOR SHALL ENSURE THAT SOCKET OUTLETS ETC. ARE NOT INSTALLED BACK TO BACK TO ENSURE THE ACOUSTIC INTEGRITY OF THE WALLS BETWEEN THEM IS MAINTAINED.
- EVERY SERVICE, FITTING AND PIECE OF EQUIPMENT IS PROVIDED SO AS TO SERVE A PURPOSE OF THE BUILDING REGULATIONS AND IS TO BE DESIGNED, INSTALLED AND COMMISSIONED IN SUCH A WAY TO FULFIL THOSE PURPOSES.
- ELECTRICAL CONTRACTOR TO ALLOW FOR INSTALLING, TESTING & COMMISSIONING OF ALL ACCESSORIES. THEN REMOVAL TO ALLOW FOR FINAL DECORATION.
- POWER SUPPLIES FOR ALL MECHANICAL PLANT ARE SUBJECT TO CHANGE. REFER TO MECHANICAL LAYOUTS FOR DETAILS.
- THIS DRAWING DOES NOT REMOVE THE CONTRACTORS RESPONSIBILITY TO:
 - PRODUCE THEIR OWN WORKING DRAWINGS.
 - TAKE ALL SITE DIMENSIONS AS REQUIRED.
 - COORDINATE WITH OTHER SERVICES AND THE BUILDING STRUCTURE

NEW SMALL POWER & DATA LEGEND

ALL NEW ELECTRICAL ELEMENTS NOTED AS NEW & COLOURED BLUE

- NEW SINGLE SWITCHED SOCKET OUTLET
- NEW 2 TWIN SWITCHED SOCKET OUTLET
- NEW USB SOCKET OUTLET c/w TWIN USB PORT
- NEW IP66 RATED EXTERNAL SOCKET OUTLET
- NEW UNSWITCHED FUSED CONNECTION UNIT (OPTIONAL PILOT LIGHT)
- NEW SWITCHED FUSED CONNECTION UNIT (OPTIONAL PILOT LIGHT)
- NEW 3 COMPARTMENT FLOORBOX c/w 2 No. TWIN 13A SOCKET OUTLETS & 2 No. TWIN DATA OUTLETS
- NEW 1 COMPARTMENT FLOORBOX c/w TWIN SOCKET OUTLET
- NEW TELEPHONE POINT
- NEW TWIN DATA OUTLET
- NEW PANELBOARD
- NEW DISTRIBUTION BOARD
- NEW NEW IP BASED INTERCOM SYSTEM TO BE INSTALLED WITH NEW POLISHED BRASS FINISHED EXTERNAL UNIT AND INTERNAL RECEIVING POINTS INSTALLED TO THE DESK OF THE RECEPTION AND LIBRARY.
- NEW ELECTRICAL CONTRACTOR TO CHASE WALL TO HIGH LEVEL AND INSTALL 2x25mm CABLE CONDUIT TO BELOW FLOOR TO ALLOW SPEAKER CABLING TO BE INSTALLED BY AV SPECIALIST

EXISTING SMALL POWER & DATA LEGEND

- EXISTING SINGLE SWITCHED SOCKET OUTLET
- EXISTING 2 TWIN SWITCHED SOCKET OUTLET
- EXISTING USB SOCKET OUTLET c/w TWIN USB PORT
- EXISTING IP66 RATED EXTERNAL SOCKET OUTLET
- EXISTING UNSWITCHED FUSED CONNECTION UNIT (OPTIONAL PILOT LIGHT)
- EXISTING SWITCHED FUSED CONNECTION UNIT (OPTIONAL PILOT LIGHT)
- EXISTING FLOORBOX
- EXISTING TELEPHONE POINT
- EXISTING TWIN DATA OUTLET

ABBREVIATIONS

- CV CEILING VOID
- LL LOW LEVEL
- ML MID LEVEL
- HL HIGH LEVEL

PO3	UPDATED TENDER ISSUE	PS	AJ	AJ	16.12.24
PO2	TENDER ISSUE	JK	TD	AJ	05.09.23
PO1	ISSUED TO ARCHITECT FOR COMMENT/APPROVAL	JK	TD	AJ	22.08.23
REV	DESCRIPTION	BY	CHK	APP	DATE

Project Status: **LBC SUBMISSION**

The Multi-disciplinary Engineering Consultancy

h HARLEY HADDOW

Unit A2, Hatchers Yard, 9 Tanner Street
London, SE1 3LE
T 44 (0) 203 735 5960
E london@harleyhaddow.com
Edinburgh | Glasgow | London | Manchester
harleyhaddow.com
Association for Consulting and Engineering Member Firm

Project: 310311
GERMAN HISTORICAL INSTITUTE
17 BLOOMSBURY SQUARE

Drawing Title:
FIRST FLOOR PROPOSED CONTAINMENT LAYOUT

Scale @ A1	Date	Engineer
1:50	JUNE 2023	AJ
Drawing No.	Revision	
310311-HAH-XX-01-D-E-06210	P03	

FILENAME: Z:\PROJECTS\310311 - GERMAN HISTORICAL INSTITUTE - 17 BLOOMSBURY SQUARE - NC14 2LP\07 HAH DRAWINGS\02 HAH CAD\02 ELECTRICAL\310311-HAH-XX-01-D-E-06210.DWG | PLOTTED DATE: 16 December 2024 14:05:17

AT THIS POINT THE ROUTE WILL NEED TO DROP DOWN INTO THE GROUND FLOOR (HIGH LEVEL IN THE CEILING) TO PASS UNDER THE CONCRETE STAIR AREA

FLOOR BOX FOR AV TROLLEY. LOCATION TO BE CONFIRMED PRIOR TO INSTALLATION

NO CONTAINMENT POSSIBLE TO THESE ROOMS DUE TO BUILDING MAKE UP. THEREFORE CONTRACTOR TO ALLOW FOR PULLING UP FLOOR BOARD TO FULLY REWIRE THE BOARD ROOM AND READING ROOM.

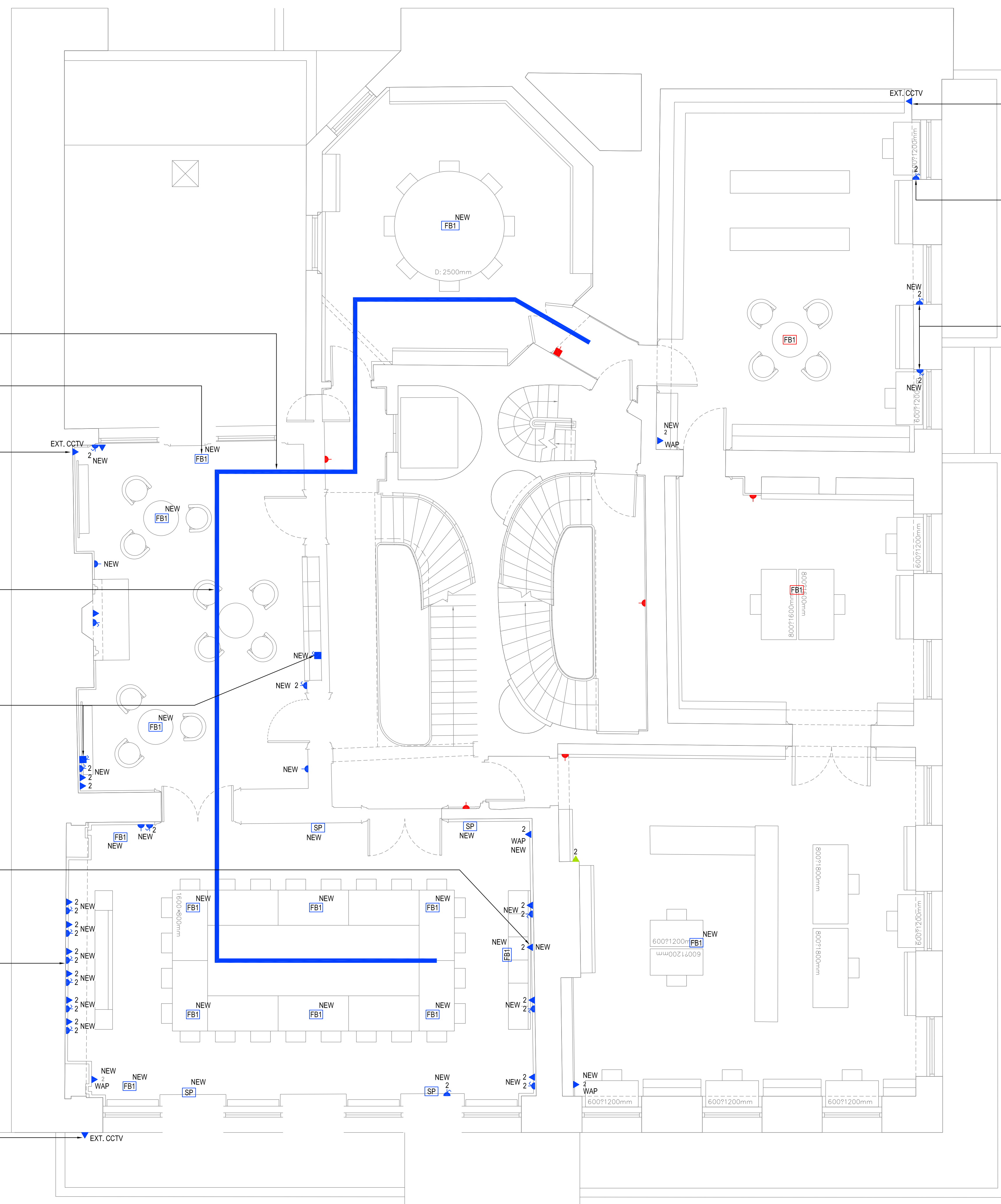
*BLUE LINE INDICATES NOTIONAL CABLE ROUTE TO BE THROUGH HOLES IN JOISTS OR METAL BANDED TO JOISTS.

*HIGH LEVEL LIGHTING IN THE FLOORS BELOW TO BE REWIRED VIA LIFTING THESE FLOOR ALSO

SWITCHED FUSE SPUR LINKED TO LIGHTING CONTROL SWITCH FOR INTEGRATED JOINERY LIGHTING

DATA POINT MOUNTED AT 2700mm FROM FFL FOR PTZ CAMERA

8 No DATA OUTLETS AND 2 No POWER OUTLETS TO BE INSTALLED WITHIN THE AV WALL FORWARD OF THE MASONRY WALL. FOR DETAILS SEE MVS DRAWING GHI-MVS-XX-00-DR-0201



DATA OUTLET AT LL

REPLACE SURFACE MOUNT SINGLE SOCKET OUTLETS WITH DOUBLE SOCKET OUTLETS

REPLACE SURFACE MOUNT SINGLE SOCKET OUTLETS WITH DOUBLE SOCKET OUTLETS

NEW 2 WAP

NEW 2

NEW 2

NEW 2

NEW 2

NEW 2

NEW 2

NEW 2

NEW 2

NEW 2

NEW 2

NEW 2

NEW 2

NEW 2

NEW 2

NEW 2

NEW 2

NEW 2

NEW 2

NEW 2

NEW 2

NEW 2

NEW 2

NEW 2

NEW 2

NEW 2

NEW 2

NEW 2

NEW 2

NEW 2

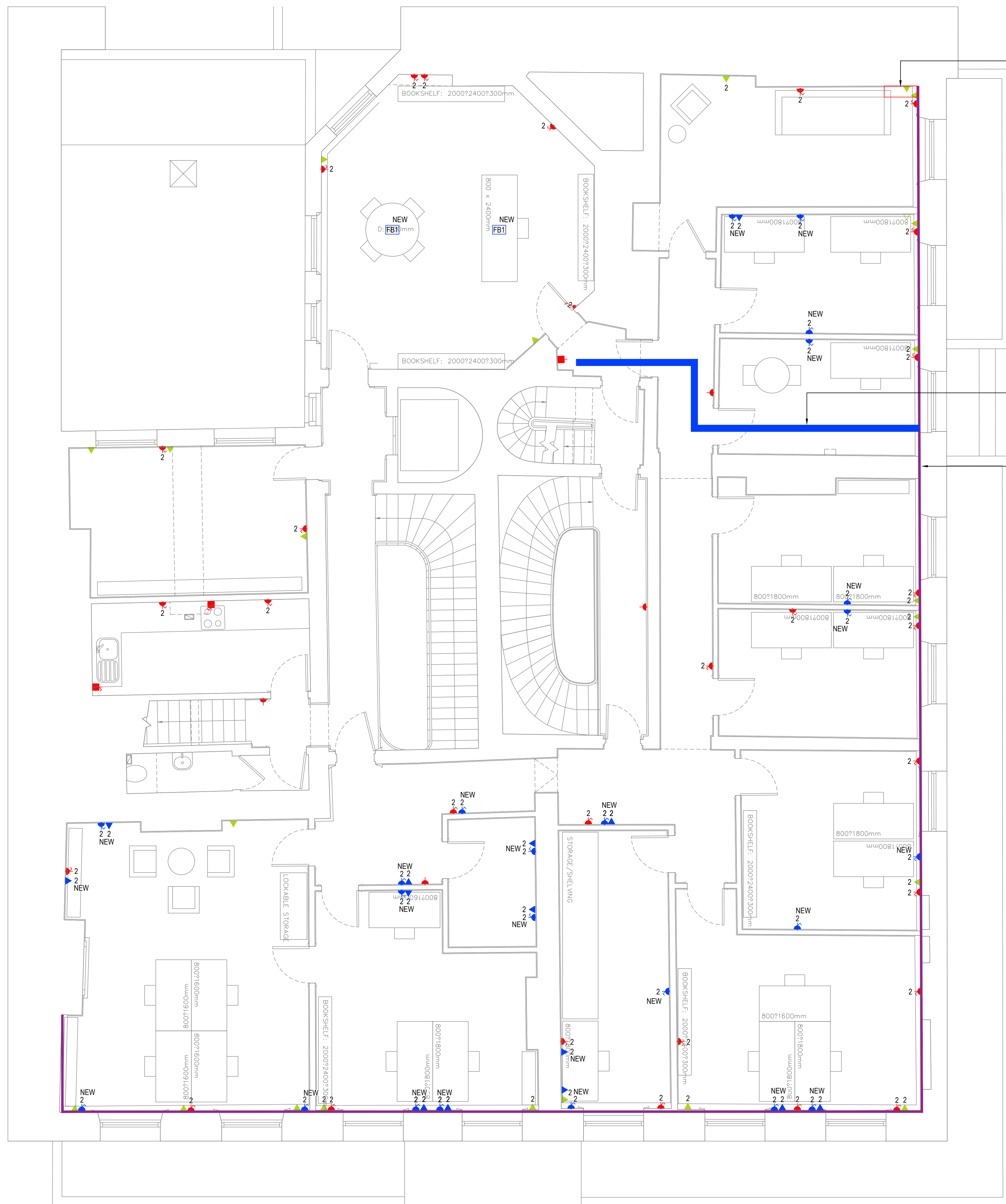
NEW 2

NEW 2

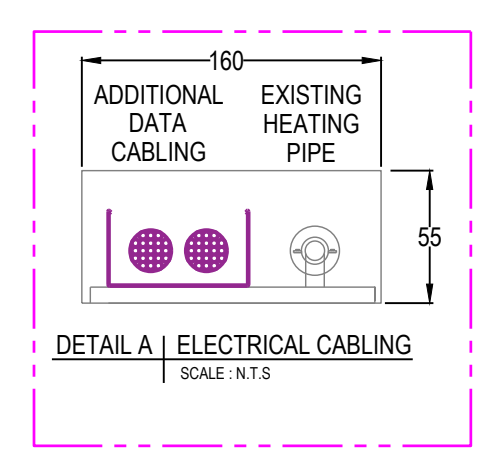
THIS DRAWING IS INDICATIVE AND REPRESENTS ONLY THE DESIGN INTENT, THE CONTRACTOR MUST PRODUCE FULLY CO-ORDINATED WORKING / INSTALLATION DRAWINGS AS REFERRED TO IN THE CONTRACT DOCUMENTATION

NOTES

- DO NOT SCALE FROM THIS DRAWING. ALL DIMENSIONS INDICATED ARE IN MILLIMETRES
- DRAWING TO BE READ IN CONJUNCTION WITH SPECIFICATION, DOCUMENTATION, DRAWINGS & ALL RELEVANT BRITISH STANDARD DOCUMENTS
- ALL ELECTRICAL WORKS SHALL COMPLY WITH 18TH EDITION IET WIRING REGS BS7671:2018+A2:2022. INCLUDING ALL CURRENT AMENDMENTS AND GUIDANCE NOTES AND THE CURRENT BUILDING STANDARDS REGULATIONS
- THE INSTALLATION SHALL ONLY BE CERTIFIED BY A PERSON OR A COMPANY HAVING MEMBERSHIP TO S.E.L.E.C.T. OR N.I.C.E.I.C. OR SIMILAR ELECTRICAL SCHEMES
- ELECTRICAL ACCESSORY POSITIONS ARE INDICATIVE ONLY. ELECTRICAL CONTRACTOR TO REFER TO ARCHITECTS SETTING OUT DRAWINGS FOR EXACT DIMENSIONS / LOCATIONS.
- CONTRACTOR TO ALLOW FOR COORDINATION OF ALL MECHANICAL AND ELECTRICAL SERVICES THROUGHOUT.
- CONTRACTOR TO ALLOW FOR SITE COORDINATION WITH OTHER TRADE/SERVICE INSTALLATIONS.
- ALL FINAL CIRCUIT WIRING TO BE MULTICORE FLEXISHEILD TYPE.
- SOCKET / DATA OUTLETS TO BE FLUSH MOUNTED THROUGHOUT.
- SOCKET OUTLET FINISHES TBC BY INTERIOR DESIGNER.
- SOCKET OUTLETS TO ALL PLANT / STORE SPACES TO BE SURFACE MOUNTED METAL CLAD.
- ALL ELECTRICAL OUTLETS TO BE FULLY AGREED / SIGNED OFF BY INTERIOR DESIGNER PRIOR TO INSTALLATION.
- ALL CABLE / TV / DATA OUTLETS THROUGHOUT TO MATCH OUTLET FINISH WITHIN GIVEN SPACE.
- ALL FINAL WAP LOCATIONS TO BE CONFIRMED WITH AV SPECIALIST. ACCESS POINTS & ASSOCIATED POWER SERVICES TO BE CEILING MOUNTED.
- ACCESSORY PLATES WITHIN THE KITCHEN SHALL BE ENGRAVED WITH THE NAME OF EQUIPMENT SERVED (5mm BLACK LETTERING).
- THE ELECTRICAL CONTRACTOR SHALL ENSURE THAT SOCKET OUTLETS ETC. ARE NOT INSTALLED BACK TO BACK TO ENSURE THE ACOUSTIC INTEGRITY OF THE WALLS BETWEEN THEM IS MAINTAINED.
- EVERY SERVICE, FITTING AND PIECE OF EQUIPMENT IS PROVIDED SO AS TO SERVE A PURPOSE OF THE BUILDING REGULATIONS AND IS TO BE DESIGNED, INSTALLED AND COMMISSIONED IN SUCH A WAY TO FULFIL THOSE PURPOSES.
- ELECTRICAL CONTRACTOR TO ALLOW FOR INSTALLING, TESTING & COMMISSIONING OF ALL ACCESSORIES. THEN REMOVAL TO ALLOW FOR FINAL DECORATION.
- POWER SUPPLIES FOR ALL MECHANICAL PLANT ARE SUBJECT TO CHANGE, REFER TO MECHANICAL LAYOUTS FOR DETAILS.
- THIS DRAWING DOES NOT REMOVE THE CONTRACTORS RESPONSIBILITY TO:
 - PRODUCE THEIR OWN WORKING DRAWINGS.
 - TAKE ALL SITE DIMENSIONS AS REQUIRED.
 - COORDINATE WITH OTHER SERVICES AND THE BUILDING STRUCTURE



WALL BOXING OUT REQUIRED FOR CABLES DROPPING FROM DATA ROOM ABOVE IN TO PERIMETER BOXING



FLOOR BOARDS REMOVED AND CABLE DISTRIBUTED THROUGH FLOOR FROM RISER AND/OR DISTRIBUTION BOARD TO PERIMETER CONTAINMENT ROUTE FOR NEW POWER CIRCUITS OR DATA CABLES

EXISTING PERIMETER BOXING CONTAINING HEATING PIPE REMOVED AND REBUILT TO HOUSE ADDITIONAL DATA CABLING ROUTE. CLEAR OPEN AREA REQUIRED SEE DETAIL A

SMALL POWER AND LIGHTING CABLES TO BE FULLY REWIRED AREAS TO BE RUN THROUGH EXISTING NOTCHES/HOLES WITHIN JOISTS

NEW SMALL POWER & DATA LEGEND

ALL NEW ELECTRICAL ELEMENTS NOTED AS NEW & COLOURED BLUE

- NEW SINGLE SWITCHED SOCKET OUTLET
- NEW TWIN SWITCHED SOCKET OUTLET
- NEW SOCKET OUTLET c/w TWIN USB PORT
- NEW IP66 RATED EXTERNAL SOCKET OUTLET
- NEW UNSWITCHED FUSED CONNECTION UNIT (OPTIONAL PILOT LIGHT)
- NEW SWITCHED FUSED CONNECTION UNIT (OPTIONAL PILOT LIGHT)
- NEW 3 COMPARTMENT FLOORBOX c/w 2 No. TWIN 13A SOCKET OUTLETS & 2 No. TWIN DATA OUTLETS
- NEW 1 COMPARTMENT FLOORBOX c/w TWIN SOCKET OUTLET
- NEW TELEPHONE POINT
- NEW TWIN DATA OUTLET
- NEW PANELBOARD
- NEW DISTRIBUTION BOARD

NEW IP BASED INTERCOM SYSTEM TO BE INSTALLED WITH NEW POLISHED BRASS FINISHED EXTERNAL UNIT AND INTERNAL RECEIVING POINTS INSTALLED TO THE DESK OF THE RECEPTION AND LIBRARY.

SP ELECTRICAL CONTRACTOR TO CHASE WALL TO HIGH LEVEL AND INSTALL 2x25mm CABLE CONDUIT TO BELOW FLOOR TO ALLOW SPEAKER CABLING TO BE INSTALLED BY AV SPECIALIST

EXISTING SMALL POWER & DATA LEGEND

- SINGLE SWITCHED SOCKET OUTLET
- TWIN SWITCHED SOCKET OUTLET
- SOCKET OUTLET c/w TWIN USB PORT
- IP66 RATED EXTERNAL SOCKET OUTLET
- UNSWITCHED FUSED CONNECTION UNIT (OPTIONAL PILOT LIGHT)
- SWITCHED FUSED CONNECTION UNIT (OPTIONAL PILOT LIGHT)
- FLOORBOX
- TELEPHONE POINT
- TWIN DATA OUTLET

ABBREVIATIONS

- CV CEILING VOID
- LL LOW LEVEL
- ML MID LEVEL
- HL HIGH LEVEL

PO2 TENDER ISSUE	JK	TD	AJ	05.09.23
PO1 ISSUED TO ARCHITECT FOR	JK	TD	AJ	22.08.23
REV COMMENT/ APPROVAL	BY	CHK	APP	DATE

Project Status: **LBC SUBMISSION**

Project: 310311

GERMAN HISTORICAL INSTITUTE
17 BLOOMSBURY SQUARE

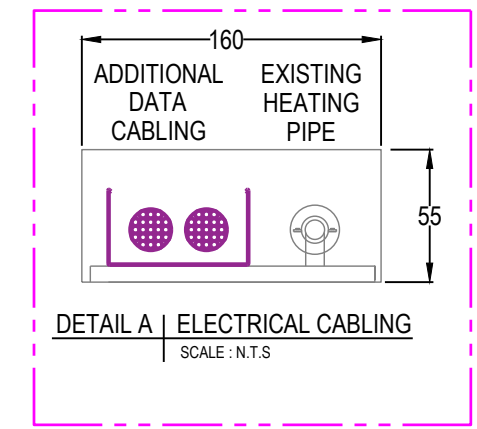
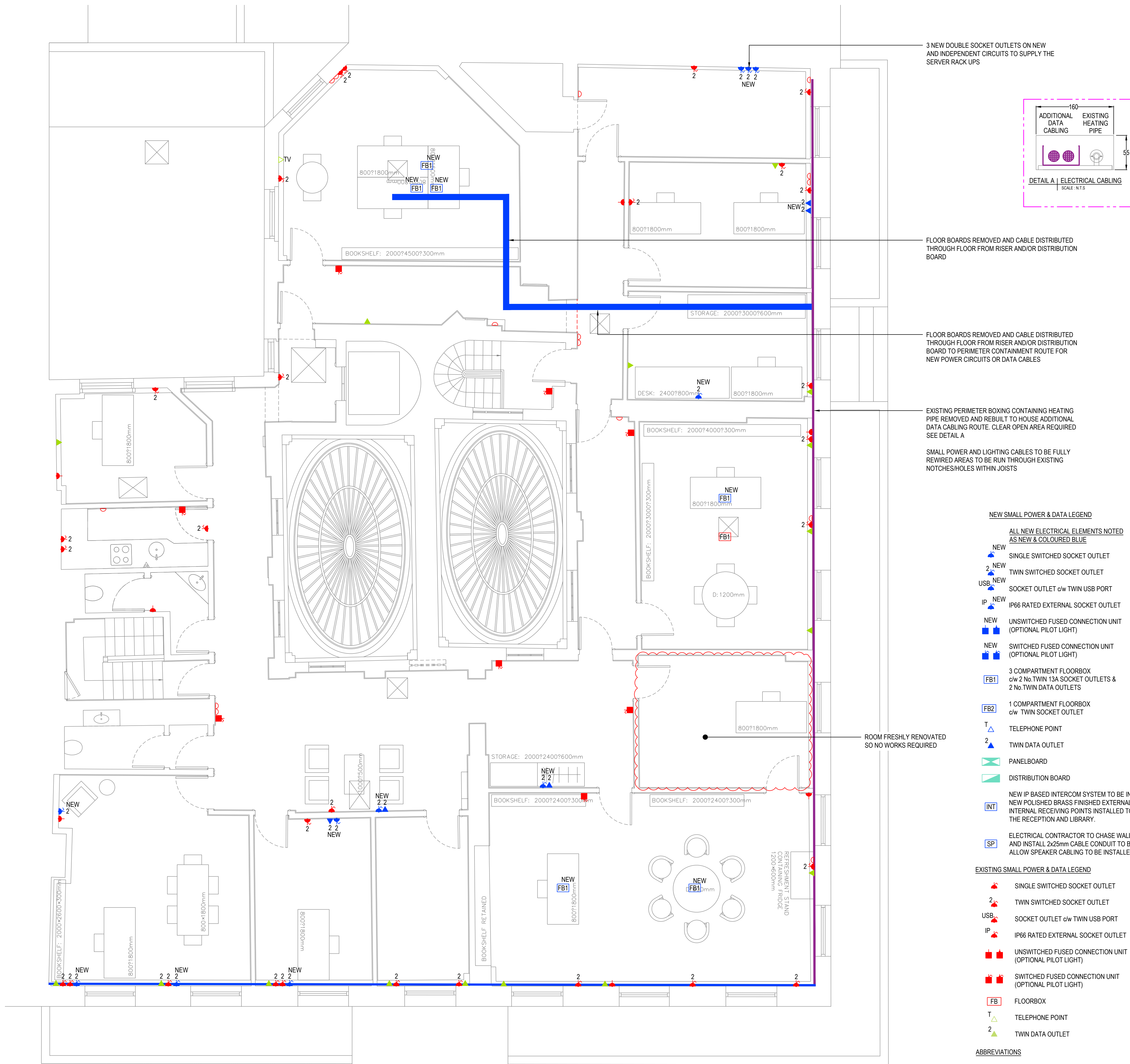
Drawing Title:
SECOND FLOOR PROPOSED SMALL POWER & DATA LAYOUT

Scale @ A1	Date	Engineer
1:50	JUNE 2023	AJ
Drawing No.	Revision	
310311-HAH-XX-02-D-E-06210	P02	

THIS DRAWING IS INDICATIVE AND REPRESENTS ONLY THE DESIGN INTENT, THE CONTRACTOR MUST PRODUCE FULLY CO-ORDINATED WORKING / INSTALLATION DRAWINGS AS REFERRED TO IN THE CONTRACT DOCUMENTATION

NOTES

- DO NOT SCALE FROM THIS DRAWING. ALL DIMENSIONS INDICATED ARE IN MILLIMETRES
- DRAWING TO BE READ IN CONJUNCTION WITH SPECIFICATION, DOCUMENTATION, DRAWINGS & ALL RELEVANT BRITISH STANDARD DOCUMENTS
- ALL ELECTRICAL WORKS SHALL COMPLY WITH 18TH EDITION IET WIRING REGS BS7671:2018+A2:2022. INCLUDING ALL CURRENT AMENDMENTS AND GUIDANCE NOTES AND THE CURRENT BUILDING STANDARDS REGULATIONS
- THE INSTALLATION SHALL ONLY BE CERTIFIED BY A PERSON OR A COMPANY HAVING MEMBERSHIP TO S.E.L.E.C.T. OR N.I.C.E.I.C. OR SIMILAR ELECTRICAL SCHEMES
- ELECTRICAL ACCESSORY POSITIONS ARE INDICATIVE ONLY. ELECTRICAL CONTRACTOR TO REFER TO ARCHITECTS SETTING OUT DRAWINGS FOR EXACT DIMENSIONS / LOCATIONS.
- CONTRACTOR TO ALLOW FOR COORDINATION OF ALL MECHANICAL AND ELECTRICAL SERVICES THROUGHOUT.
- CONTRACTOR TO ALLOW FOR SITE COORDINATION WITH OTHER TRADE/SERVICE INSTALLATIONS.
- ALL FINAL CIRCUIT WIRING TO BE MULTICORE FLEXISHEILD TYPE.
- SOCKET / DATA OUTLETS TO BE FLUSH MOUNTED THROUGHOUT.
- SOCKET OUTLET FINISHES TBC BY INTERIOR DESIGNER.
- SOCKET OUTLETS TO ALL PLANT / STORE SPACES TO BE SURFACE MOUNTED METAL CLAD.
- ALL ELECTRICAL OUTLETS TO BE FULLY AGREED / SIGNED OFF BY INTERIOR DESIGNER PRIOR TO INSTALLATION.
- ALL CABLE / TV / DATA OUTLETS THROUGHOUT TO MATCH OUTLET FINISH WITHIN GIVEN SPACE.
- ALL FINAL WAP LOCATIONS TO BE CONFIRMED WITH AV SPECIALIST. ACCESS POINTS & ASSOCIATED POWER SERVICES TO BE CEILING MOUNTED.
- ACCESSORY PLATES WITHIN THE KITCHEN SHALL BE ENGRAVED WITH THE NAME OF EQUIPMENT SERVED (5mm BLACK LETTERING).
- THE ELECTRICAL CONTRACTOR SHALL ENSURE THAT SOCKET OUTLETS ETC. ARE NOT INSTALLED BACK TO BACK TO ENSURE THE ACOUSTIC INTEGRITY OF THE WALLS BETWEEN THEM IS MAINTAINED.
- EVERY SERVICE, FITTING AND PIECE OF EQUIPMENT IS PROVIDED SO AS TO SERVE A PURPOSE OF THE BUILDING REGULATIONS AND IS TO BE DESIGNED, INSTALLED AND COMMISSIONED IN SUCH A WAY TO FULFIL THOSE PURPOSES.
- ELECTRICAL CONTRACTOR TO ALLOW FOR INSTALLING, TESTING & COMMISSIONING OF ALL ACCESSORIES. THEN REMOVAL TO ALLOW FOR FINAL DECORATION.
- POWER SUPPLIES FOR ALL MECHANICAL PLANT ARE SUBJECT TO CHANGE, REFER TO MECHANICAL LAYOUTS FOR DETAILS.
- THIS DRAWING DOES NOT REMOVE THE CONTRACTORS RESPONSIBILITY TO:
 - PRODUCE THEIR OWN WORKING DRAWINGS.
 - TAKE ALL SITE DIMENSIONS AS REQUIRED.
 - COORDINATE WITH OTHER SERVICES AND THE BUILDING STRUCTURE



3 NEW DOUBLE SOCKET OUTLETS ON NEW AND INDEPENDENT CIRCUITS TO SUPPLY THE SERVER RACK UPS

FLOOR BOARDS REMOVED AND CABLE DISTRIBUTED THROUGH FLOOR FROM RISER AND/OR DISTRIBUTION BOARD

FLOOR BOARDS REMOVED AND CABLE DISTRIBUTED THROUGH FLOOR FROM RISER AND/OR DISTRIBUTION BOARD TO PERIMETER CONTAINMENT ROUTE FOR NEW POWER CIRCUITS OR DATA CABLES

EXISTING PERIMETER BOXING CONTAINING HEATING PIPE REMOVED AND REBUILT TO HOUSE ADDITIONAL DATA CABLING ROUTE. CLEAR OPEN AREA REQUIRED SEE DETAIL A

SMALL POWER AND LIGHTING CABLES TO BE FULLY REWIRED AREAS TO BE RUN THROUGH EXISTING NOTCHES/HOLES WITHIN JOISTS

ROOM FRESHLY RENOVATED SO NO WORKS REQUIRED

NEW SMALL POWER & DATA LEGEND

ALL NEW ELECTRICAL ELEMENTS NOTED AS NEW & COLOURED BLUE

- NEW SINGLE SWITCHED SOCKET OUTLET
- 2 NEW TWIN SWITCHED SOCKET OUTLET
- USB SOCKET OUTLET c/w TWIN USB PORT
- IP IP66 RATED EXTERNAL SOCKET OUTLET
- NEW UNSWITCHED FUSED CONNECTION UNIT (OPTIONAL PILOT LIGHT)
- NEW SWITCHED FUSED CONNECTION UNIT (OPTIONAL PILOT LIGHT)
- [FB1] 3 COMPARTMENT FLOORBOX c/w 2 No. TWIN 13A SOCKET OUTLETS & 2 No. TWIN DATA OUTLETS
- [FB2] 1 COMPARTMENT FLOORBOX c/w TWIN SOCKET OUTLET
- T TELEPHONE POINT
- 2 TWIN DATA OUTLET
- PANELBOARD
- DISTRIBUTION BOARD
- NEW IP BASED INTERCOM SYSTEM TO BE INSTALLED WITH NEW POLISHED BRASS FINISHED EXTERNAL UNIT AND INTERNAL RECEIVING POINTS INSTALLED TO THE DESK OF THE RECEPTION AND LIBRARY.
- [SP] ELECTRICAL CONTRACTOR TO CHASE WALL TO HIGH LEVEL AND INSTALL 2x25mm CABLE CONDUIT TO BELOW FLOOR TO ALLOW SPEAKER CABLING TO BE INSTALLED BY AV SPECIALIST

EXISTING SMALL POWER & DATA LEGEND

- ▲ SINGLE SWITCHED SOCKET OUTLET
- 2 TWIN SWITCHED SOCKET OUTLET
- USB SOCKET OUTLET c/w TWIN USB PORT
- IP IP66 RATED EXTERNAL SOCKET OUTLET
- ▲ UNSWITCHED FUSED CONNECTION UNIT (OPTIONAL PILOT LIGHT)
- ▲ SWITCHED FUSED CONNECTION UNIT (OPTIONAL PILOT LIGHT)
- [FB] FLOORBOX
- T TELEPHONE POINT
- 2 TWIN DATA OUTLET

ABBREVIATIONS

- CV CEILING VOID
- LL LOW LEVEL
- ML MID LEVEL
- HL HIGH LEVEL

P02 TENDER ISSUE	JK	TD	AJ	05.09.23
P01 ISSUED TO ARCHITECT FOR COMMENT/APPROVAL	JK	TD	AJ	22.08.23
REV DESCRIPTION	BY	CHK	APP	DATE

Project Status:
LBC SUBMISSION

The Multi-disciplinary Engineering Consultancy

h HARLEY HADDOW

Unit A2, Hatchers Yard, 9 Tanner Street
London, SE1 3LE
T 44 (0) 203 735 5060
E london@harleyhaddow.com
Edinburgh | Glasgow | London | Manchester
harleyhaddow.com
Association for Consulting and Engineering Member Firm

Project: 310311

**GERMAN HISTORICAL INSTITUTE
17 BLOOMSBURY SQUARE**

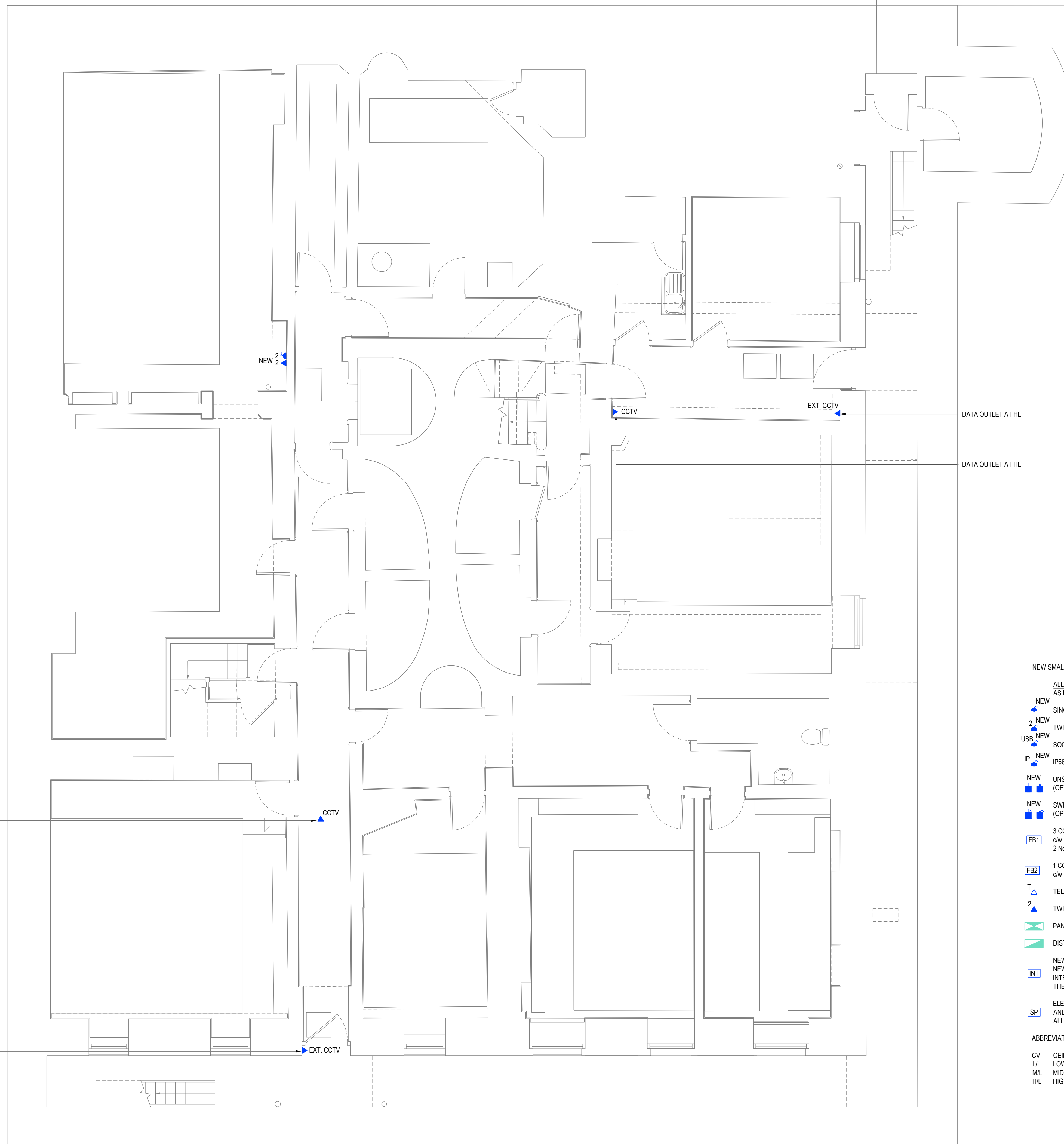
Drawing Title:
**THIRD FLOOR PROPOSED
SMALL POWER & DATA LAYOUT**

Scale @ A1 1:50	Date JUNE 2023	Engineer AJ
Drawing No. 310311-HAH-XX-03-D-E-06210	Revision P02	

THIS DRAWING IS INDICATIVE AND REPRESENTS ONLY THE DESIGN INTENT, THE CONTRACTOR MUST PRODUCE FULLY CO-ORDINATED WORKING / INSTALLATION DRAWINGS AS REFERRED TO IN THE CONTRACT DOCUMENTATION

NOTES

- DO NOT SCALE FROM THIS DRAWING. ALL DIMENSIONS INDICATED ARE IN MILLIMETRES
- DRAWING TO BE READ IN CONJUNCTION WITH SPECIFICATION, DOCUMENTATION, DRAWINGS & ALL RELEVANT BRITISH STANDARD DOCUMENTS
- ALL ELECTRICAL WORKS SHALL COMPLY WITH 18TH EDITION IET WIRING REGS BS7671:2018+A2:2022. INCLUDING ALL CURRENT AMENDMENTS AND GUIDANCE NOTES AND THE CURRENT BUILDING STANDARDS REGULATIONS
- THE INSTALLATION SHALL ONLY BE CERTIFIED BY A PERSON OR A COMPANY HAVING MEMBERSHIP TO S.E.L.E.C.T. OR N.I.C.E.I.C. OR SIMILAR ELECTRICAL SCHEMES
- ELECTRICAL ACCESSORY POSITIONS ARE INDICATIVE ONLY. ELECTRICAL CONTRACTOR TO REFER TO ARCHITECTS SETTING OUT DRAWINGS FOR EXACT DIMENSIONS / LOCATIONS.
- CONTRACTOR TO ALLOW FOR COORDINATION OF ALL MECHANICAL AND ELECTRICAL SERVICES THROUGHOUT.
- CONTRACTOR TO ALLOW FOR SITE COORDINATION WITH OTHER TRADE/SERVICE INSTALLATIONS.
- ALL FINAL CIRCUIT WIRING TO BE MULTICORE FLEXISHEILD TYPE.
- SOCKET / DATA OUTLETS TO BE FLUSH MOUNTED THROUGHOUT.
- SOCKET OUTLET FINISHES TBC BY INTERIOR DESIGNER.
- SOCKET OUTLETS TO ALL PLANT / STORE SPACES TO BE SURFACE MOUNTED METAL CLAD.
- ALL ELECTRICAL OUTLETS TO BE FULLY AGREED / SIGNED OFF BY INTERIOR DESIGNER PRIOR TO INSTALLATION.
- ALL CABLE / TV / DATA OUTLETS THROUGHOUT TO MATCH OUTLET FINISH WITHIN GIVEN SPACE.
- ALL FINAL WIAP LOCATIONS TO BE CONFIRMED WITH AV SPECIALIST. ACCESS POINTS & ASSOCIATED POWER SERVICES TO BE CEILING MOUNTED.
- ACCESSORY PLATES WITHIN THE KITCHEN SHALL BE ENGRAVED WITH THE NAME OF EQUIPMENT SERVED (5mm BLACK LETTERING).
- THE ELECTRICAL CONTRACTOR SHALL ENSURE THAT SOCKET OUTLETS ETC. ARE NOT INSTALLED BACK TO BACK TO ENSURE THE ACOUSTIC INTEGRITY OF THE WALLS BETWEEN THEM IS MAINTAINED.
- EVERY SERVICE, FITTING AND PIECE OF EQUIPMENT IS PROVIDED SO AS TO SERVE A PURPOSE OF THE BUILDING REGULATIONS AND IS TO BE DESIGNED, INSTALLED AND COMMISSIONED IN SUCH A WAY TO FULFIL THOSE PURPOSES.
- ELECTRICAL CONTRACTOR TO ALLOW FOR INSTALLING, TESTING & COMMISSIONING OF ALL ACCESSORIES. THEN REMOVAL TO ALLOW FOR FINAL DECORATION.
- POWER SUPPLIES FOR ALL MECHANICAL PLANT ARE SUBJECT TO CHANGE, REFER TO MECHANICAL LAYOUTS FOR DETAILS.
- THIS DRAWING DOES NOT REMOVE THE CONTRACTORS RESPONSIBILITY TO:
 - PRODUCE THEIR OWN WORKING DRAWINGS.
 - TAKE ALL SITE DIMENSIONS AS REQUIRED.
 - COORDINATE WITH OTHER SERVICES AND THE BUILDING STRUCTURE



NEW SMALL POWER & DATA LEGEND

ALL NEW ELECTRICAL ELEMENTS NOTED AS NEW & COLOURED BLUE

- NEW SINGLE SWITCHED SOCKET OUTLET
- NEW TWIN SWITCHED SOCKET OUTLET
- NEW SOCKET OUTLET c/w TWIN USB PORT
- NEW IP66 RATED EXTERNAL SOCKET OUTLET
- NEW UNSWITCHED FUSED CONNECTION UNIT (OPTIONAL PILOT LIGHT)
- NEW SWITCHED FUSED CONNECTION UNIT (OPTIONAL PILOT LIGHT)
- NEW 3 COMPARTMENT FLOORBOX c/w 2 No. TWIN 13A SOCKET OUTLETS & 2 No. TWIN DATA OUTLETS
- NEW 1 COMPARTMENT FLOORBOX c/w TWIN SOCKET OUTLET
- NEW TELEPHONE POINT
- NEW TWIN DATA OUTLET
- NEW PANELBOARD
- NEW DISTRIBUTION BOARD
- NEW IP BASED INTERCOM SYSTEM TO BE INSTALLED WITH NEW POLISHED BRASS FINISHED EXTERNAL UNIT AND INTERNAL RECEIVING POINTS INSTALLED TO THE DESK OF THE RECEPTION AND LIBRARY.
- NEW ELECTRICAL CONTRACTOR TO CHASE WALL TO HIGH LEVEL AND INSTALL 2x25mm CABLE CONDUIT TO BELOW FLOOR TO ALLOW SPEAKER CABLEING TO BE INSTALLED BY AV SPECIALIST

ABBREVIATIONS

- CV CEILING VOID
- LL LOW LEVEL
- ML MID LEVEL
- HL HIGH LEVEL

PO2	UPDATED TENDER ISSUE	PS	AJ	AJ	16.12.24
PO1	TENDER ISSUE	VK	AJ	AJ	05.09.23
REV	DESCRIPTION	BY	CHK	APP	DATE

Project Status:
LBC SUBMISSION

The Multi-disciplinary Engineering Consultancy
 Unit A2, Hatchers Yard, 9 Tanner Street
 London, SE1 3LE
 T 44 (0) 203 735 5060
 E london@harleyhaddow.com
 Edinburgh | Glasgow | London | Manchester
 harleyhaddow.com
 harleyhaddow.com
 Association for Consultancy and Engineering Member Firm

Project: 310311
GERMAN HISTORICAL INSTITUTE
 17 BLOOMSBURY SQUARE

Drawing Title:
BASEMENT FLOOR PROPOSED SMALL POWER & DATA LAYOUT

Scale @ A1	Date	Engineer
1:50	JUNE 2023	AJ
Drawing No.	Revision	
310311-HAH-XX-B1-D-E-06210	P02	