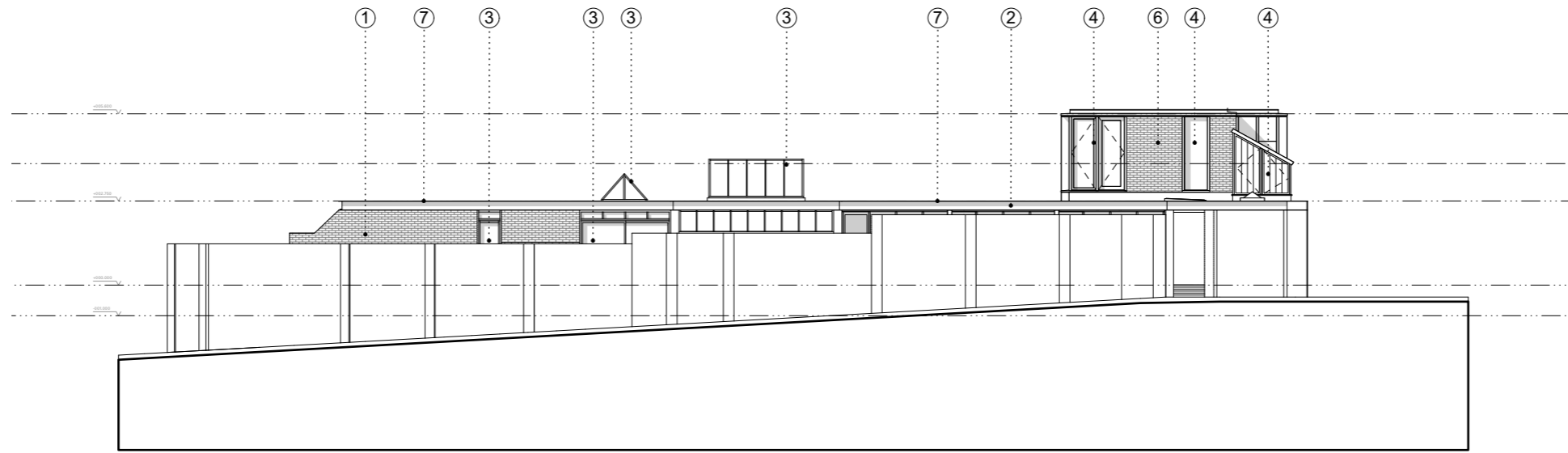
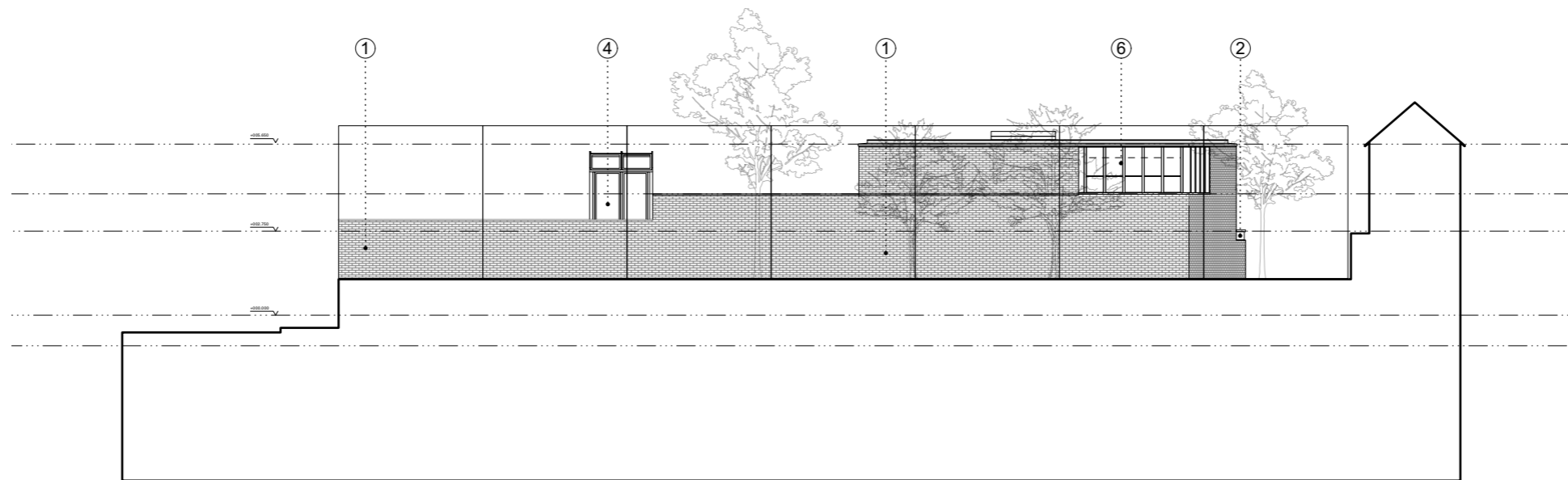
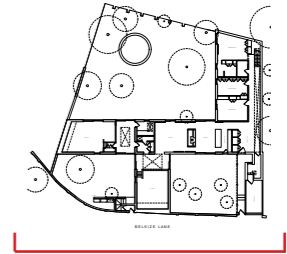


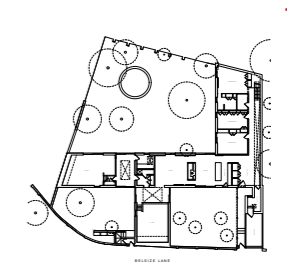
- 1.Existing brick
- 2.Black painted galvanised steel
- 3.Aluminium windows/ rooflight/ doors
- 4.Dark stained timber window frames
- 5.Dark stained timber panel
- 6.New brick to match existing
- 7.Green roof



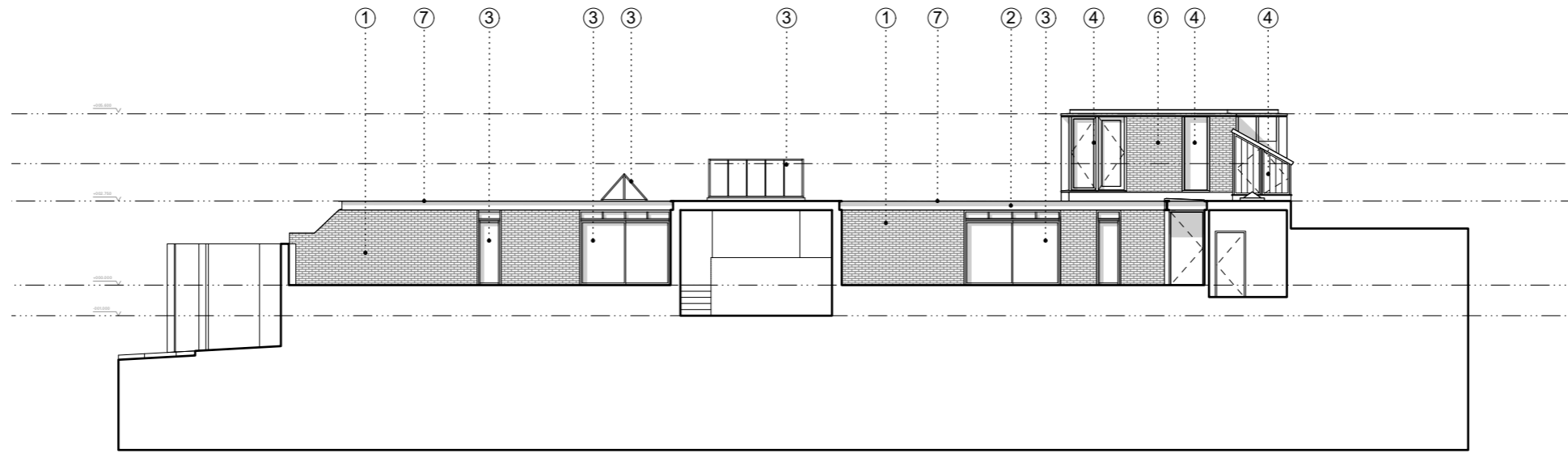
Elevation from Street



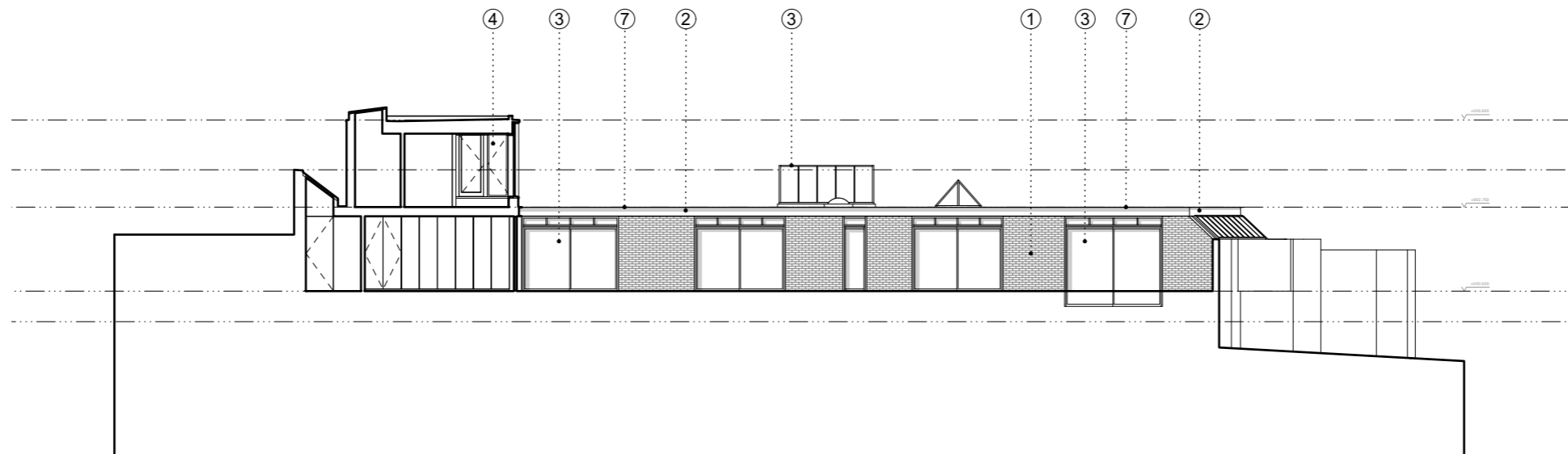
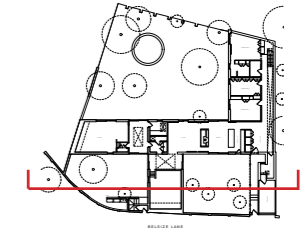
Elevation from School



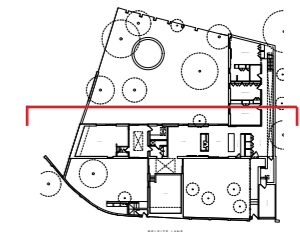
- 1.Existing brick
- 2.Black painted galvanised steel
- 3.Aluminium windows/ rooflight/ doors
- 4.Dark stained timber window frames
- 5.Dark stained timber panel
- 6.New brick to match existing
- 7.Green roof



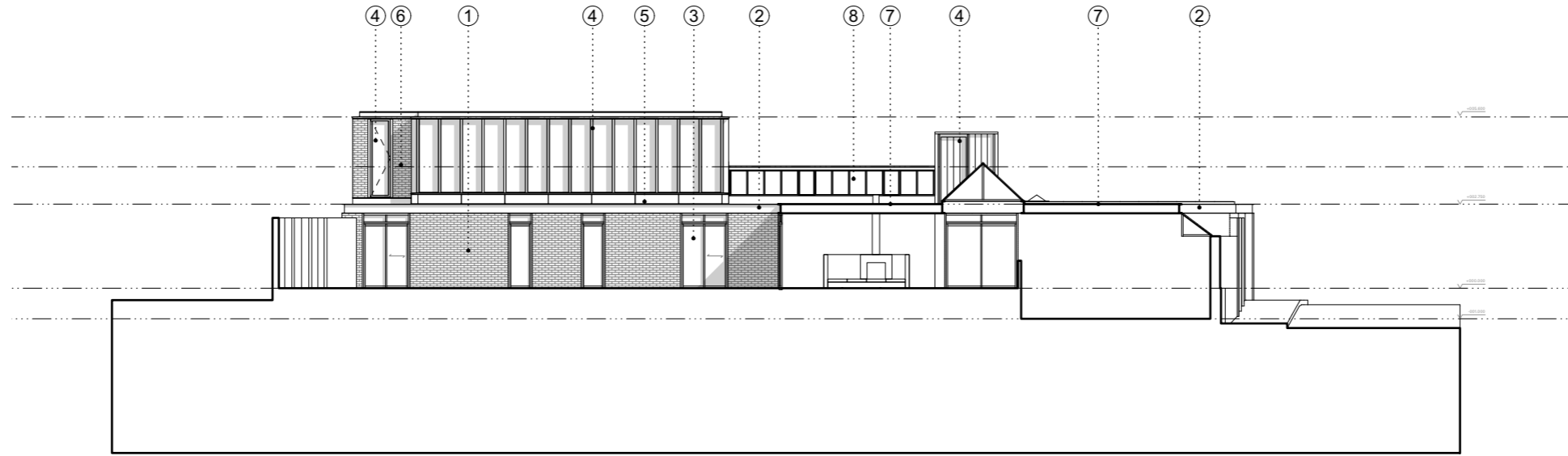
Section AA



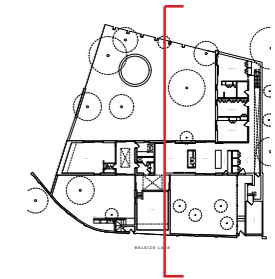
Section CC



- 1. Existing brick
- 2. Black painted galvanised steel
- 3. Aluminium windows/ rooflight/ doors
- 4. Dark stained timber window frames
- 5. Dark stained timber panel
- 6. New brick to match existing
- 7. Green roof
- 8. Existing clerestory rooflight position



Section DD



Unit 4a Culford House
1-7 Orsman Road
London N1 5RA
United Kingdom

+44 (0) 7927755317
info@eb-ba.co
www.eb-ba.co
@ebbaarchitects