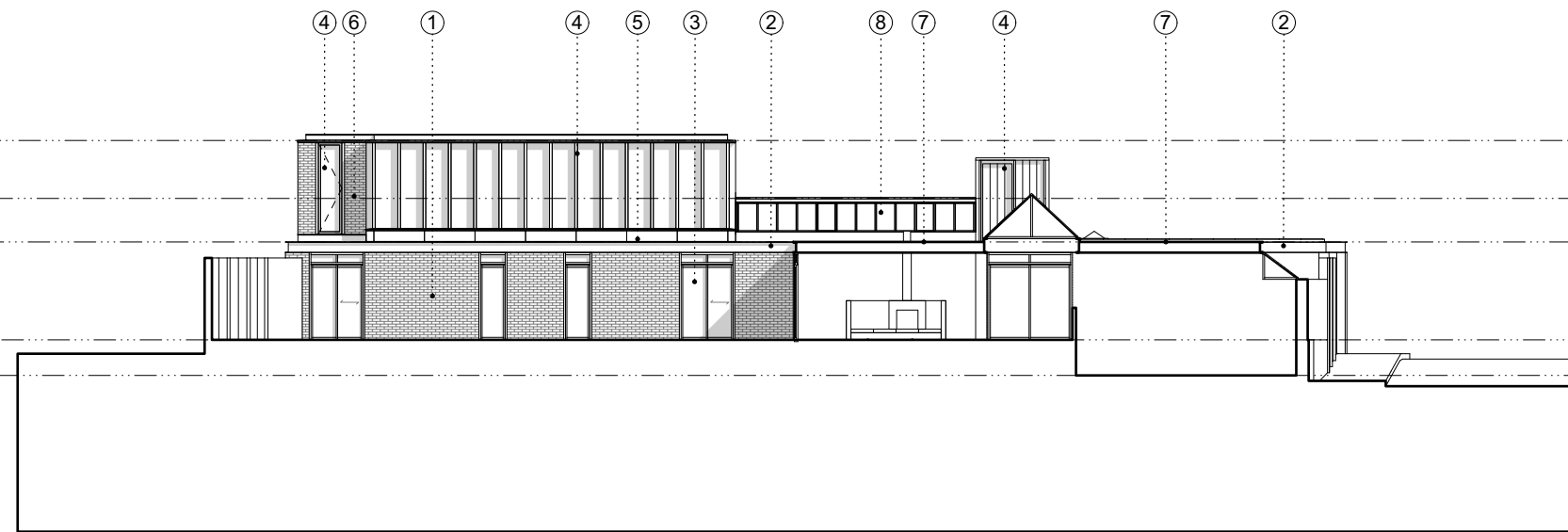


- 1.Existing brick
- 2.Black painted galvanised steel
- 3.Aluminium windows/ rooflight/ doors
- 4.Dark stained timber window frames
- 5.Dark stained timber panel
- 6.New brick to match existing
- 7.Green roof
- 8.Existing clerestory rooflight position

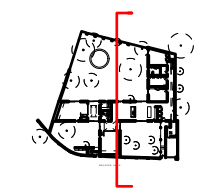
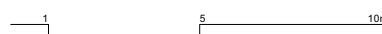


1 Proposed Section CC  
1:200@A3

Rev.	Date	Description
A	04/07/2024	Planning Update
B	16/12/2024	Planning Amendment

**Notes**

- ALL CO-ORDINATES, LEVELS, DIMENSIONS AND DISCREPANCIES ARE TO BE REPORTED TO THE ARCHITECT IMMEDIATELY
- ALL STRUCTURAL ELEMENTS ARE TO BE DESIGNED BY THE STRUCTURAL ENGINEER
- ALL DRAWINGS TO BE READ IN CONJUNCTION WITH ARCHITECTURAL SPECIFICATION
- DO NOT SCALE FROM THESE DRAWINGS, USE FIGURED DIMENSIONS ONLY



<b>PROJECT:</b>	Belsize Lane	<b>PROJECT No:</b>	EBBA
<b>CLIENT:</b>	Charlie & Christina	<b>245</b>	
<b>DATE:</b>	16/12/2024	<b>ISSUE:</b>	<b>REV B</b>
<b>SCALE:</b>	1:200 @ A3		
<b>DRAWING:</b>	Proposed Section CC		
<b>REFERENCE:</b>	245-S3-122		
<b>STATUS:</b>	<b>FOR PLANNING</b>		T +44 (0)7927755317   www.eb-ba.co