

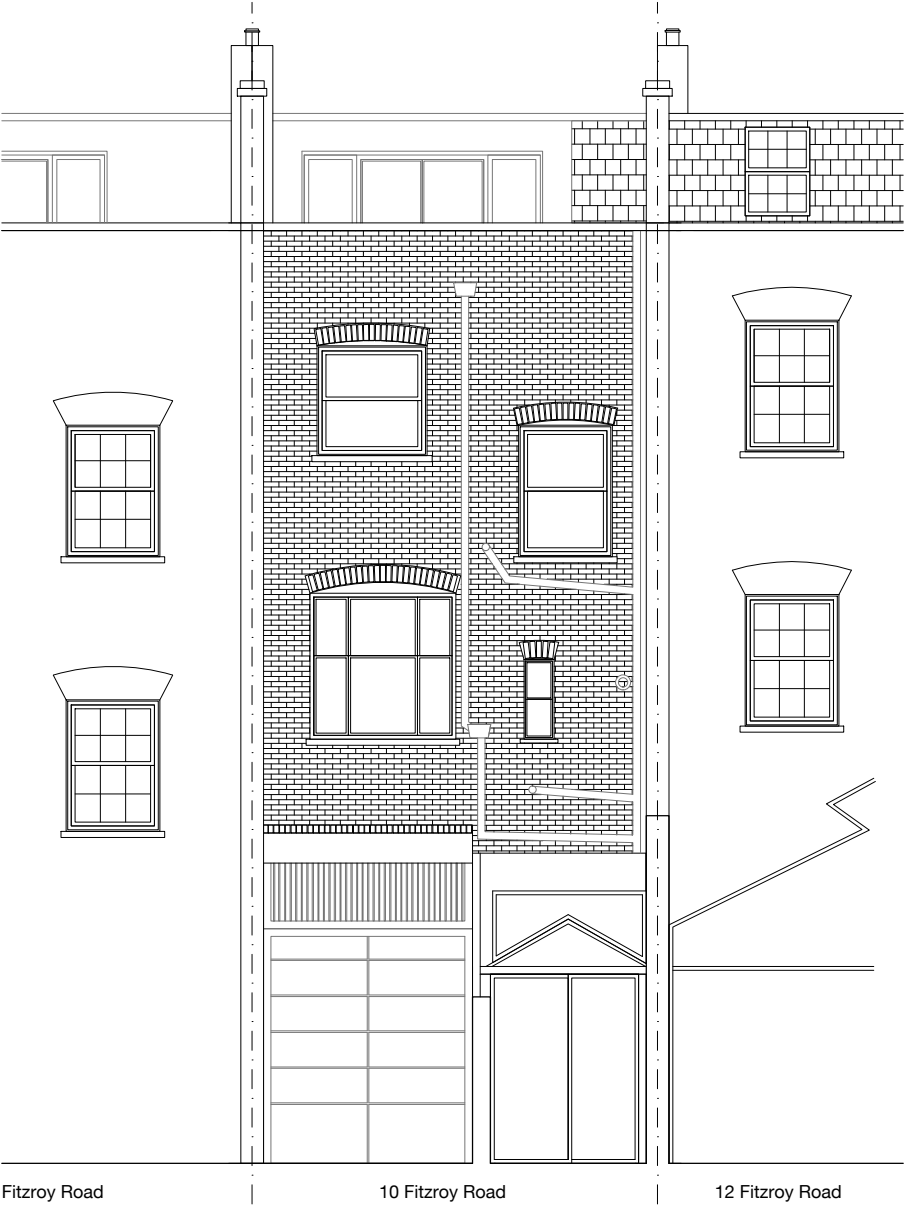
REVISIONS		
REV.	DATE	AMENDMENT
P1	16.12.2024	Issued for planning



ROOF +12695	▽
3F FCL +12385	△
3F FFL +10060	▽
2F FCL +9630	△
2F FFL +7030	▽
1F FCL +6690	△
1F FFL +3520	▽
GF FCL +3180	△
GF FFL +0000	▽
-1F FCL -0300	△
LGF FFL -1190	▽
-1F FFL -2711	▽



217-(00)250.01 - FRONT ELEVATION



217-(00)250.01 - REAR ELEVATION