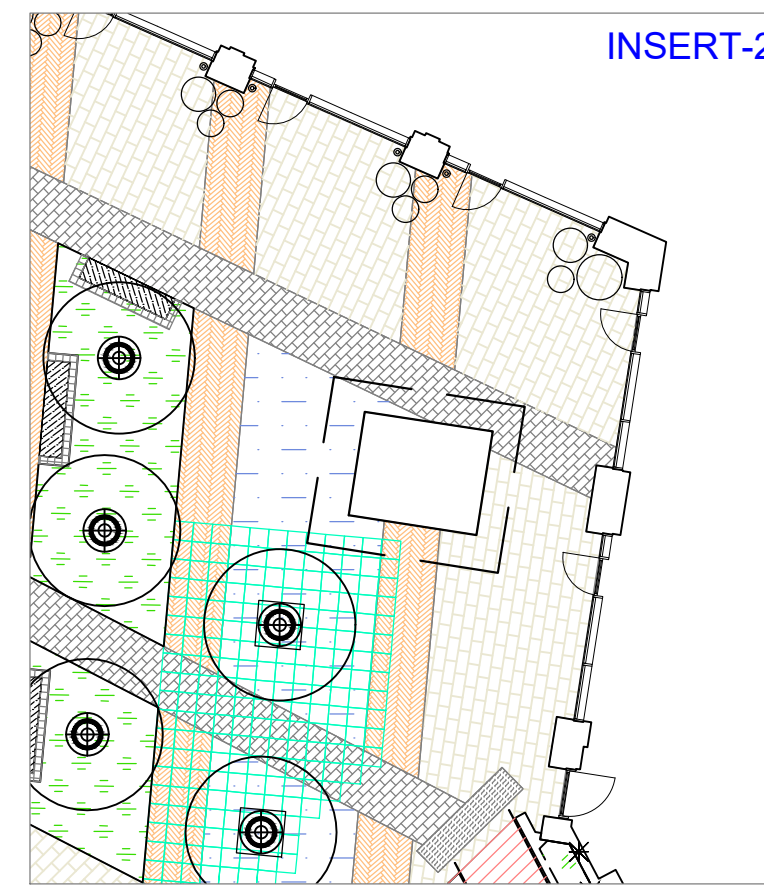


003 Navigation map  
Scale: 1:2000



HARD LANDSCAPE		FURNITURE	
S1	<b>LARGE FLAG PAVING</b> (L)200 x (W)300 x (D)80mm, Braemar Ground textured, Jura Grey, Stretcher bond, by Tobemore. Landscape spec: Q25.315	F1	<b>CONCRETE BENCH WITH LED STRIP LIGHTING</b> (L)2540 x (W)590mm, Fortis, Furnitures, Land. spec.: Q50.225
S2	<b>SMALL FLAG PAVING</b> (L)300 x (W)200 x (D)80mm, Braemar Ground textured, Jura Grey, Stretcher bond, by Tobemore. Suitable for vehicular use. Landscape spec: Q25.316A	F2	<b>TIMBER BENCH</b> (L)1820 x (W)550 x (H)430mm, Portique park bench, mmcile, Land. spec.: Q50.226
S3	<b>BLOCK PAVING</b> (L)300 x (W)100 x (D)80mm, kellen Breccia, Rosso, Stretcher bond, by Hardscape. Landscape spec: Q25.325A	F3	<b>TIMBER SEAT</b> (L)1820 x (W)650 x (H)430/770mm, Portique park seat with backrest, mmcile, Land. spec.: Q50.227
S4	<b>BLOCK PAVING</b> (L)300 x (W)100 x (D)80mm, Fusion, Graphite, Herringbone bond, by Tobemore. Suitable for vehicular use. Landscape spec: Q25.324	F4	<b>BESPOKE BENCH WITH LED LIGHT STRIP</b> Land. spec.: Q50.234
S5	<b>SETT PAVING BANDS</b> (L)100 x (W)100 x (D)80mm, Kellen Breccia, Rosso, Stack bond, by Hardscape. Landscape spec: Q25.336	F5	<b>CIRCULAR SEAT</b> (Ø)850 x (H)450mm, Lago 112, mmcile, Land. spec.: Q50.228
S6	<b>THRESHOLD SETT PAVING</b> (L)100 x (W)100 x (D)80mm, Kellen Breccia, Rosso, Stack bond, by Hardscape. Landscape spec: Q25.335	F11	<b>BESPOKE METAL PLANTER WITH TOP MOUNTED SEAT</b> by Kinley, Land. spec.: Q50.222D
S7	<b>CLAY PAVER</b> (L)218 x (W)52 x (D)72mm, Clay paver, Saffron, Chevron bond, by Vande Moortel. Landscape spec: Q25.310A	F12a	<b>PICNIC TABLE - SMALL</b> (L)640 x (W)1400 x (H)780, Rautster RTS152 picnic table, mmcile, Land. spec.: Q50.230
S8	<b>RESIN BOUND GRAVEL</b> (L)1200 x (W)1400 x (H)780, Resin bound surfacing, by Adisipat. Landscape spec: Q23.226A	F12b	<b>PICNIC TABLE - MEDIUM</b> (L)1200 x (W)1400 x (H)780, Rautster RTS150 picnic table, mmcile, Land. spec.: Q50.231
S9	<b>DECORATIVE GRAVEL</b> Gravel to rain garden, plum slate Aggregate, Plum-grey, 40mm, by CED Stone. Landscape spec: Q25.161	F13	<b>CIRCULAR PICNIC TABLE</b> (Ø)938 x (W)1827 x (H)455/745mm, BUZZ picnic table, Vestre, Land. spec.: Q50.233
S10	<b>SAFETY SURFACE</b> Wepour playground surfacing, Earth blend to Playpump, by Playpro. Landscape spec: Q26.340A	F14	<b>CYCLE STANDS</b> (L)1200 x (W)1400 x (H)880mm, Elk, bicycle stand, mmcile, Land. spec.: Q50.210
S11	<b>SAFETY SURFACE</b> Wepour playground surfacing, Sand blend to Gym area, by Playpro. Landscape spec: Q26.340A	F15	<b>FEATURE SEAT</b> (L)1300/170/240 x (W)110/170 x (H)50/60, Kavics, by VPI Concrete Design & Manufacture, Land. spec.: Q50.229
S12	<b>MAINTENANCE STRIP</b> Gravel to front garden, Thames Gravel, by Playpro. Landscape spec: Q23.160A	F16	<b>LITTER BINS</b> (L)945 x (W)660 x (H)985mm, Crystal triple litter bin for recycling with ashtray, mmcile, Land. spec.: Q50.240
S13	<b>TACTILE BLISTER PAVING</b> (L)400 x (W)400 x (D)85mm, to pedestrian crossings, Tactile Blister, Natural, by Marshalls. Landscape spec: Q25.320A	F17	<b>DOG BINS</b> (L)260 x (W)260 x (H)985mm, Crystal CP110 dog bin for dog excrement, mmcile, Land. spec.: Q50.241
S14	<b>TACTILE CORDUROY PAVING</b> (L)400 x (W)400 x (D)85mm, to wheelchair users, Tactile Corduroy, Natural, by Marshalls. Landscape spec: Q25.321A	F18	<b>TREE GRILLE</b> GreenBlue Urban, Arboresin precast tree grille, Dorset Gold, Land. spec.: Q50.252
S18	<b>CONCRETE PAVER</b> (Ø)101 x (W)900/1200, in stairs and areas of shallow build up, Mayfair Flag, Silver, Stretcher bond, by Tobemore. Landscape spec: Q25.317	F19	<b>STATIC BOLLARDS</b> (Ø)101 x (H)900/1200, Dome top bollard Cast in, KDT 101-3 Cl, Kent Stainless, Land. spec.: Q50.190
		F20a	<b>REMOVABLE BOLLARDS</b> (Ø)101 x (H)900/1200, Dome top bollard Removable, KDT 101-3 RS, Kent Stainless, Land. spec.: Q50.196
		F20s	<b>BOLLARD SOCKET</b> (Ø)225 x (H)300, Wembley socket, KDT 5 101, Kent Stainless, Land. spec.: Q50.197
		F21	<b>SAFETY GATES</b> Mono hinge self closing double gates, by Online Playgrounds Land. spec.: Q40.511A
		F22	<b>IN-GROUND POWER UNIT</b> 600 x 600mm recessed cover, 4no. sockets, 450mm depth, Land. spec: V91.325A
		F23	<b>BEEPOST</b> by Green & Blue, Land. spec.: Q50.355A
		F24	<b>WATER REFILL STATION</b> located in Interchange Yard, by Kent Stainless, Land. spec.: Q50.245A
		F25	<b>BOULEVARD KYOTO PLANTER</b> Three sizes, by IOTA Garden and Home Ltd, Land. spec.: Q50.219
		WP	<b>PROPOSED TAP POINT</b> Bip-tap water point location, Concealed tap, wall recessed outdoor tap-point!
			<b>HIGHWAYS FURNITURE</b> (Lighting, signage, crossing columns, bollards etc.) refer to WALSH package for further information
			<b>GENERAL</b>
			SGWL SITE BOUNDARY
			HIGHWAYS BOUNDARY
			PHASE 2a SITE BOUNDARY
			<b>SOFT LANDSCAPE</b>
			<b>EXISTING TREE</b> to be retained, Red line indicates Root Protection Area
			<b>PROPOSED SEMI-MATURE TREE</b> Landscape spec: Q31
			<b>PROPOSED EXTRA HEAVY TREE</b> Landscape spec: Q31
			<b>PROPOSED MULTI-STEM TREE</b> Landscape spec: Q31
			<b>HEDGE</b> Landscape spec: Q31
			<b>ORNAMENTAL PLANTING</b> Landscape spec: Q31
			<b>RAIN GARDEN PLANTING</b> Landscape spec: Q31
			<b>LAWN</b> Landscape spec: Q30
			<b>FLOWERING LAWN</b> Landscape spec: Q30
			<b>PAVEMENT/ SOIL SUPPORT SYSTEM</b> to tree pits in hard surfaces, RootSpace, GreenBlue Urban, Landscape spec: Q31.520