

## ENERGY EFFICIENCY

Thermal Transmission Coefficient  
 **$U_w \geq 0.83$  (W/m<sup>2</sup>K)**

Please consult typology, dimensions and glazing

## ACCOUSTIC INSULATION

Maximum glazing: **54 mm**  
 Maximum acoustic insulation: **R<sub>w</sub> = 45 dB**

## CATEGORIES ACHIEVED AT TEST CENTRE

Protection against atmospheric agents

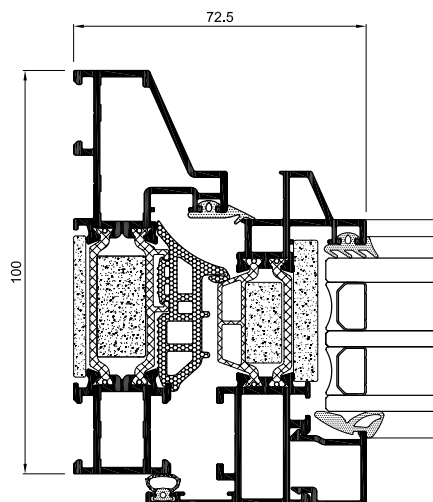
Air permeability (EN 12207): **Class 4**  
 Water tightness (EN 12208): **Class E1200**  
 Wind resistance (EN 12210): **Class C5**

Reference test 1.23 x 1.48 m / 2 sashes.

SECTIONS	Classic frame 100 mm Modern frame 70 mm Sash 83 mm
PROFILE THICKNESS	Window 1.5 mm
MAXIMUM DIMENSIONS	Width (L) = 1.500 mm Height (H) = 2.600 mm
MAXIMUM WEIGHT/SASH	160 Kg
Please consult regarding maximum weight and dimensions according to types	
GASKETS	
EPDM triple gasket	
EXTRUSION ALLOY	
6063 T-5	

POLYAMIDE STRIP LENGTH	
Polyamide 6.6 reinforced with 25% fiberglass: 32 - 39 mm	
OPENING POSSIBILITIES	
INWARD	side hung, tilt & turn, tilt.
OUTWARD	side hung
FINISHES	Colour powder coating (RAL, mottled, rough...) According to Qualicoat >60 microns Wood effect powder coating According to Qualideco standard Anodized According to Ewwa Euras Standard Class 15 Optionally Class 20 and 25 Optionally bicoloured

Classic



Modern

