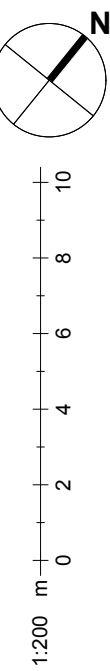


Landscape Boundary Plan Key

- Edging Type 1**  
Planter system - Refer to Hard Landscape Plan  
BPD-HLM-00-00-DR-L-30001 for details  
Powder coated, 6(W)mm, height varies.
- Edging Type 2**  
Steel edging system, Flush - Refer to Hard Landscape Plan  
BPD-HLM-00-00-DR-L-30001 for details
- Edging Type 2b**  
Steel edging system, 100mm upstand - Refer to Hard Landscape Plan  
BPD-HLM-00-00-DR-L-30001 for details
- Boundary to Cleveland Street**  
Refer to Architects detail drawing BPD-LDW-WH-ZZ-DR-A-251008
- Boundary Bedford Passage Entrance**  
Refer to Architects detail drawing BPD-LDW-WH-ZZ-DR-A-251008
- New railings - 800m - 1100(H)mm**  
depending on location, black powder coated  
Refer to detail drawing BPD-HLM-00-00-DR-L-25401 (D19 / BD1a)
- Hand Rail to all steps and ramps.**  
Black powder coated, 900(H)mm.  
Refer to detail drawing BPD-HLM-00-00-DR-L-25401 (D20 /21 / 23)
- Wall to Workhouse**  
Retaining wall to stairs/ ramp  
Refer to Architects drawings BPD-LDW-WH-ZZ-DR-A-001003/001004
- Wall to Northouse**  
Retaining walls terraces / steps  
Refer to Architects drawings BPD-LDW-NH-ZZ-DR-A-251004/251005 & 251008

Notes

Check all dimensions on site. Do not scale from this drawing  
Report any discrepancies and omissions to HLM Architects  
This Drawing is Copyright ©



C08	STAGE 5 ISSUE	21/11/22	AO	AO
C07	NORTH HOUSE AND WORK HOUSE - STAGE 5 ISSUE	15/01/21	HV	AO
C06	STAGE 4 (PCRA STAGE 1 DESIGN REVIEW)	17/07/20	HV	AO
C05	REVISED STAGE 4 ISSUE	23/05/20	HV	AO
C04	REVISED STAGE 4 ISSUE	17/01/20	HV	AO
C03	ISSUE FOR TENDER	08/02/19	MC	AO
C02	ISSUE FOR TENDER	26/10/18	MC	PI
C01	FOR INFORMATION	05/10/18	MC	PI
Rev	Description	Date	By	CHK

Revisions

Project

BEDFORD PASSAGE  
DEVELOPMENT

Client

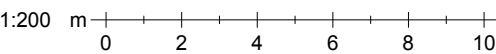
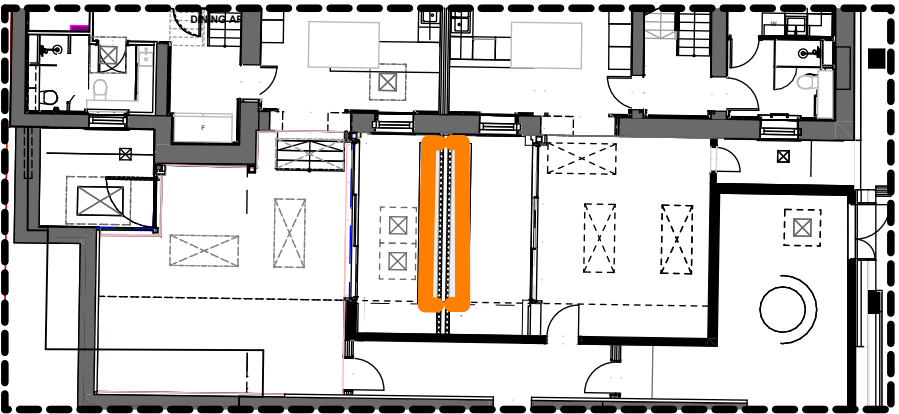
MIDDLESEX ANNEXE  
LLP

Title

LANDSCAPE BOUNDARY  
PLAN - GROUND FLOOR

Drawing No.	Revision
BPD-HLM-00-00-DR-L-25001	C08

Scale @ A1	Drawn
1:200	BH
Date	Checked
04/10/2018	HLM



© HLMArchitects  
2nd Floor  
The Ruskin Building  
Tudor Square  
Shelfield S1 2LA

www.hlmarchitects .com  
T. +44 (0) 114 263 9600  
F. +44 (0) 114 263 9650  
shel field @ hlmarchitects .com