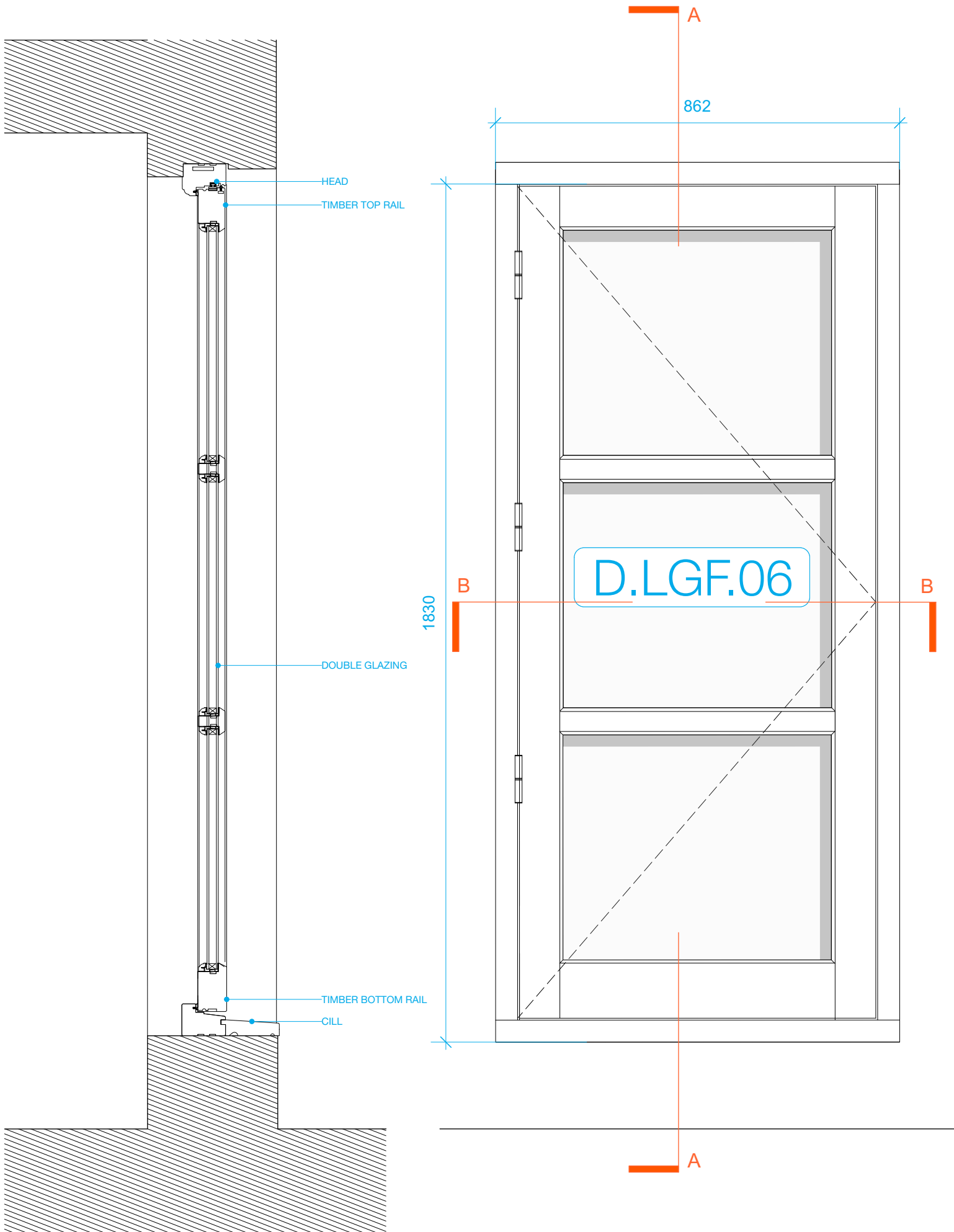


© This drawing is the property of Miltiadou Cook Mitzman architects. No disclosure or copy of it may be made without the written permission of Miltiadou Cook Mitzman architects.

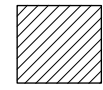
**For construction purposes:**

- Do not scale this drawing.
- All dimensions and levels to be checked on site.
- Discrepancies to be reported to Miltiadou Cook Mitzman architects before proceeding.
- If in any doubt about information on this drawing contact Miltiadou Cook Mitzman architects.

REVISION NUMBER	DATE	BY	NOTES
P1	13/12/2024	OS	Issued for planning

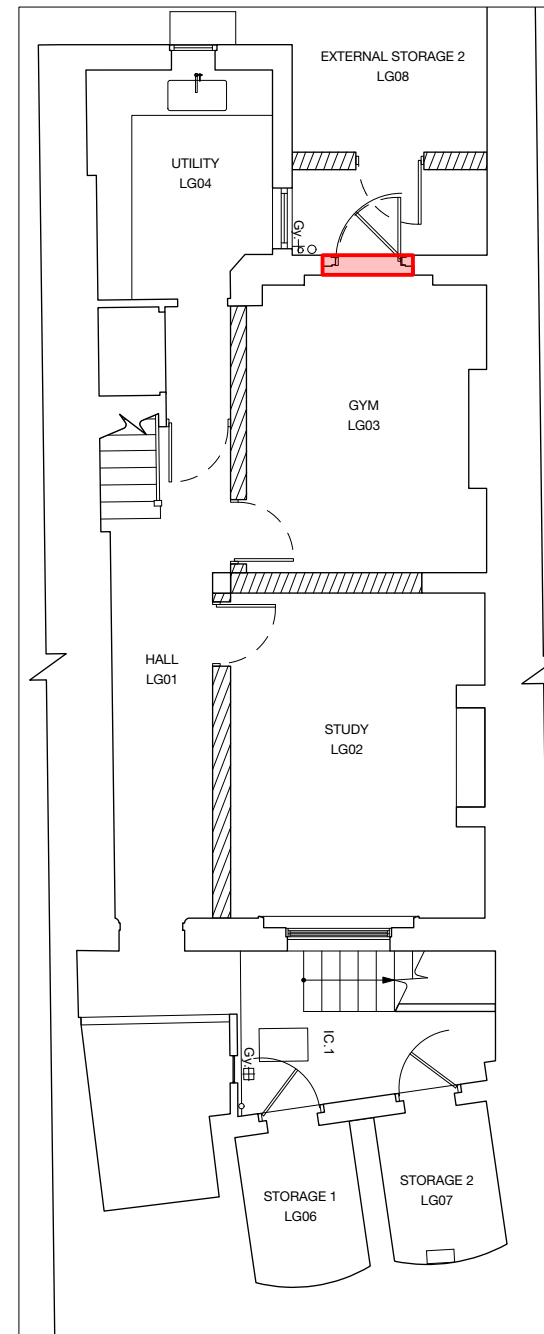


--- EXISTING DOOR OUTLINE



EXISTING BUILD UP

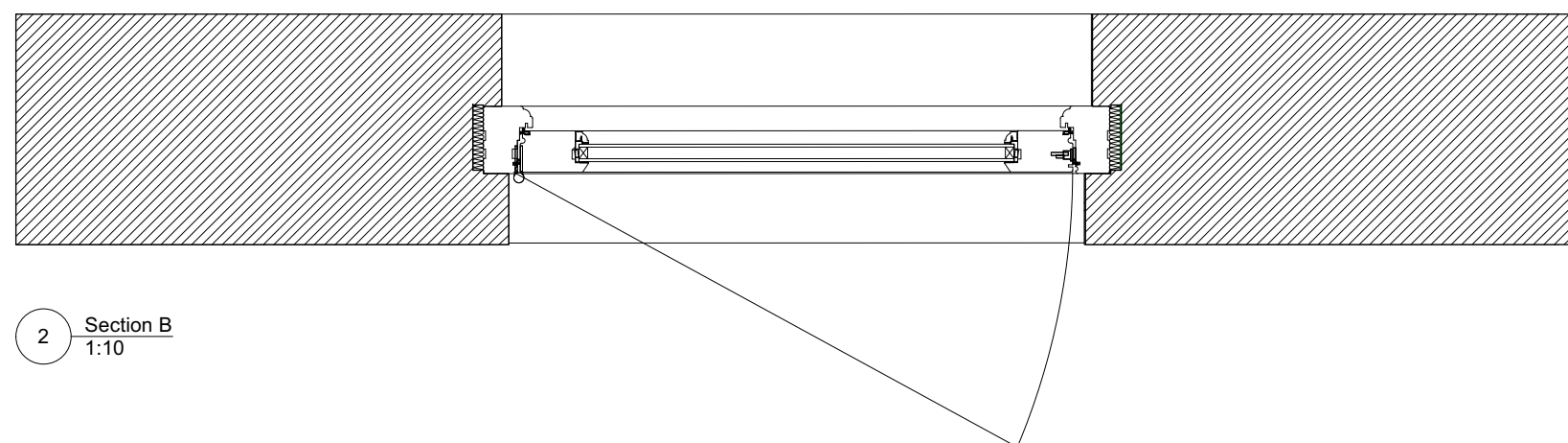
1/ALL DIMENSIONS NEED TO BE CONFIRMED ON SITE BY THE MANUFACTURER AND THE CONTRACTOR



LGF Wall Build-Up Key Plan 1:100

1 Section A 1:10

3 External Elevation 1:10



2 Section B 1:10

**MILTIADOU COOK MITZMAN architects llp**

020 7722 8525 10-12 Emerald Street  
office@mcma.design London  
www.mcma.design WC1N 3QA

**CLIENT**  
Ian & Susan Ferguson

**PROJECT**  
7 Sharpleshall Street, NW1 8YL

**SHEET TITLE**  
External Timber Door - Lower Ground Floor

**SCALE**  
AS NOTED@A3

**DATE CREATED** **FILE REFERENCE**

DRAWING NUMBER	REVISION
408-DWG-318	P1