

© This drawing is the property of Miltiadou Cook Mitzman architects. No disclosure or copy of it may be made without the written permission of Miltiadou Cook Mitzman architects.

For construction purposes:

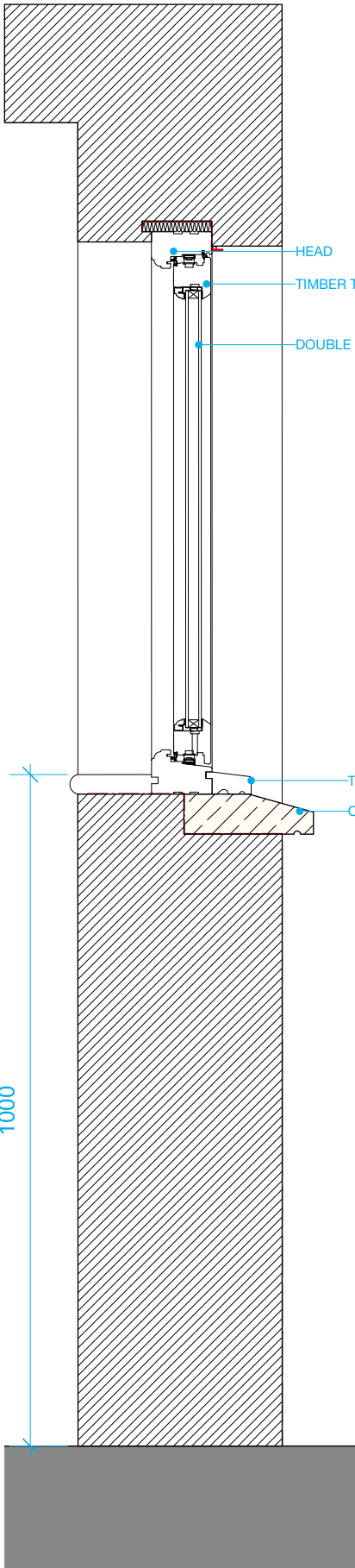
- Do not scale this drawing.
- All dimensions and levels to be checked on site.
- Discrepancies to be reported to Miltiadou Cook Mitzman architects before proceeding.
- If in any doubt about information on this drawing contact Miltiadou Cook Mitzman architects.

REVISION	NUMBER	DATE	BY	NOTES
	P1	13/12/2024	OS	Issued for planning

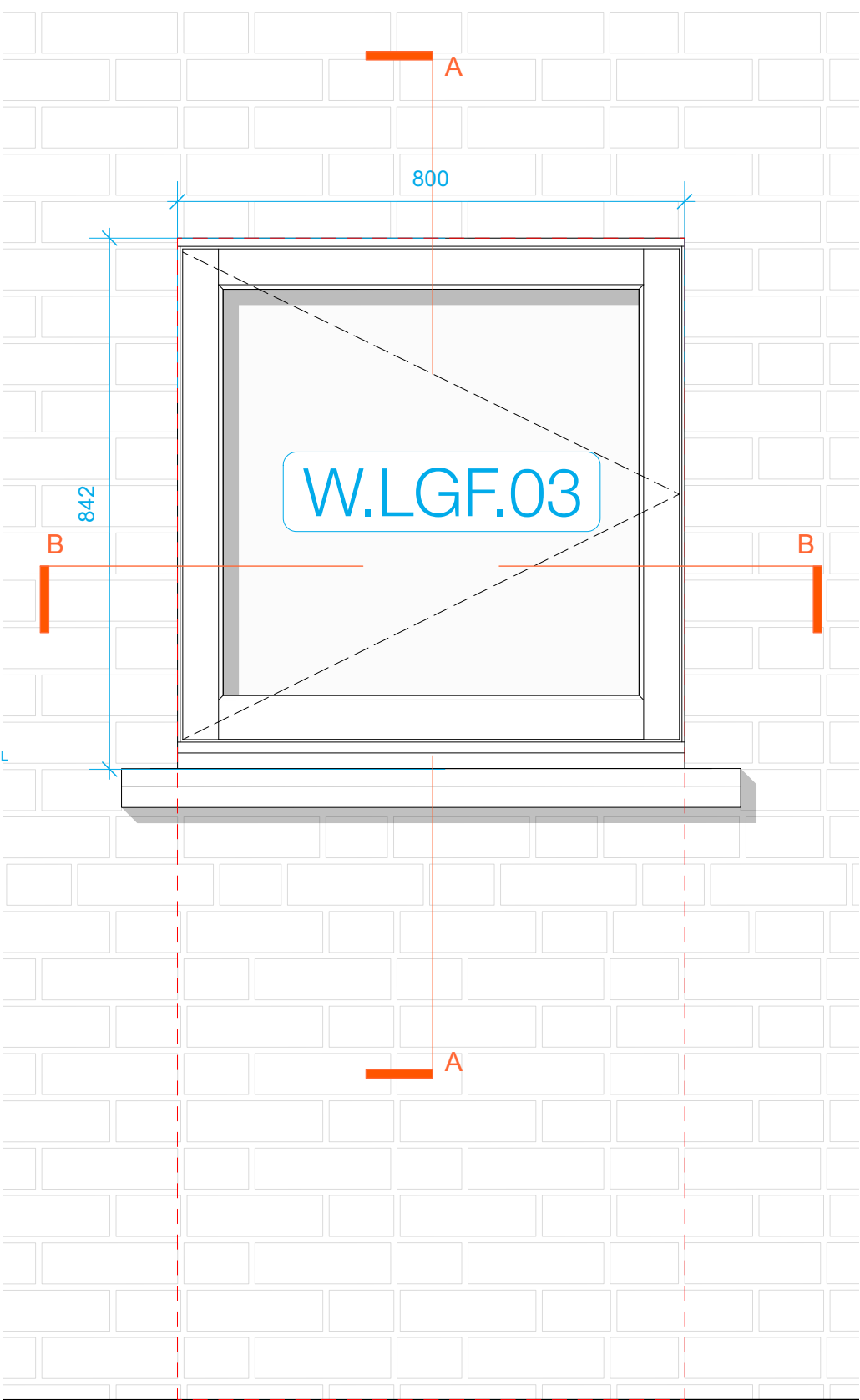
--- EXISTING DOOR OUTLINE

EXISTING BUILD UP

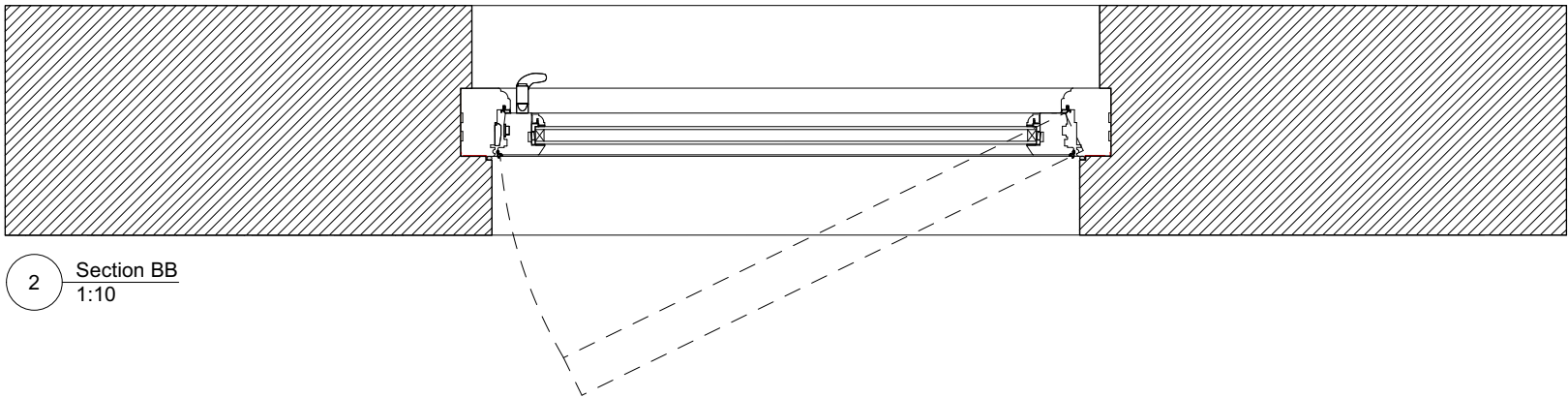
1/ALL DIMENSIONS NEED TO BE CONFIRMED ON SITE BY THE MANUFACTURER AND THE CONTRACTOR



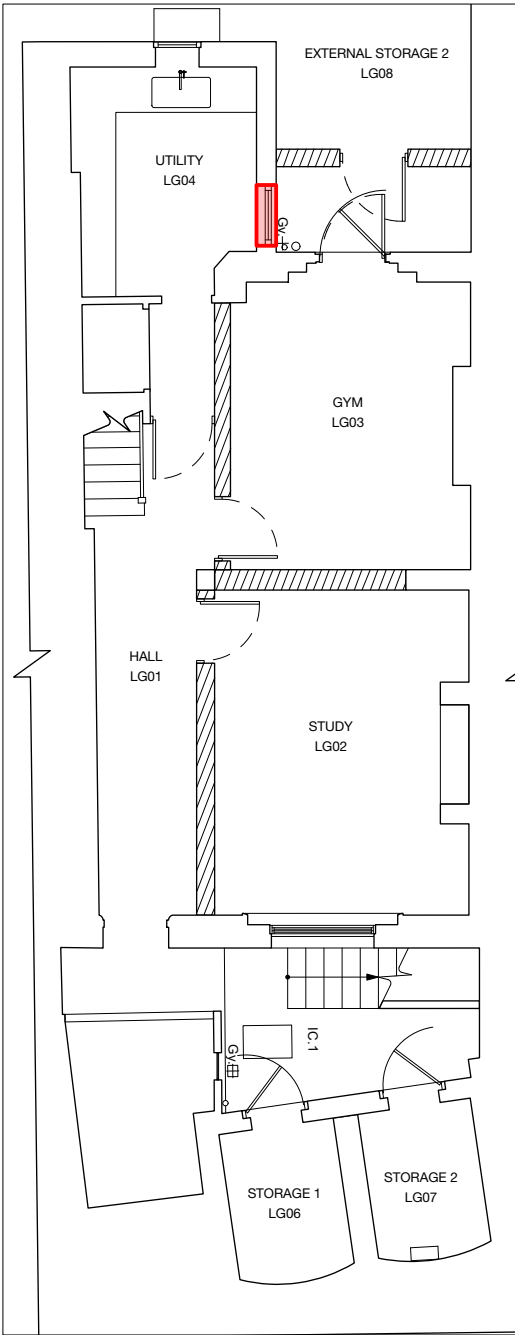
1 Section AA
1:10



3 External Elevation
1:10



2 Section BB
1:10



LGF Wall Build-Up Key Plan
1:100

MILTADOU
COOK
MITZMAN architects llp

020 7722 8525 10-12 Emerald Street
office@mcma.design London
www.mcma.design WC1N 3QA

CLIENT
Ian & Susan Ferguson

PROJECT
7 Sharpleshall Street, NW1 8YL

SHEET TITLE
Timber Frame Casement Window
Details - Lower Ground Floor

SCALE
AS NOTED@A3

DATE CREATED FILE REFERENCE

DRAWING NUMBER	REVISION
408-DWG-317	P1