

© This drawing is the property of Miltiadou Cook Mitzman architects. No disclosure or copy of it may be made without the written permission of Miltiadou Cook Mitzman architects.

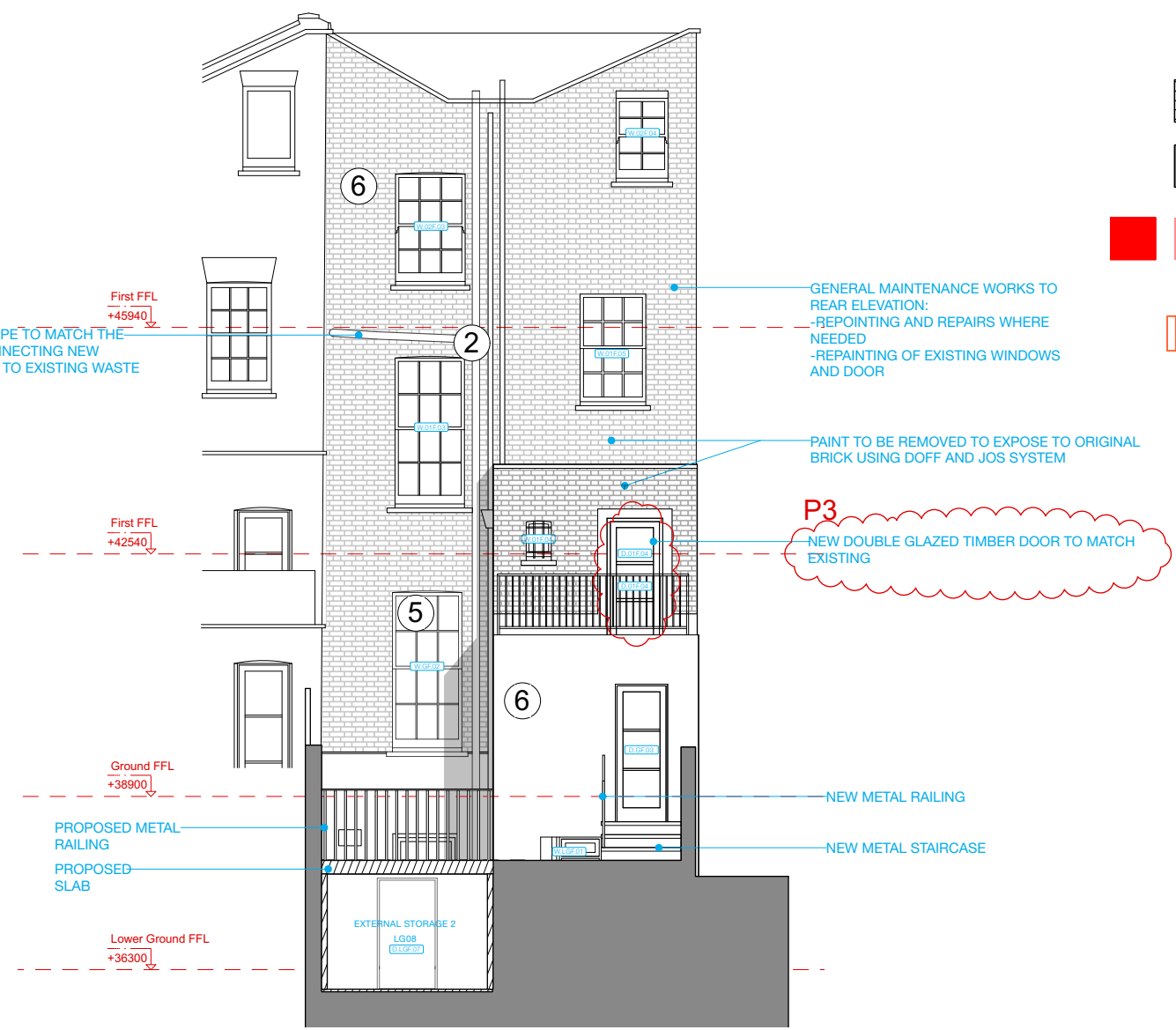
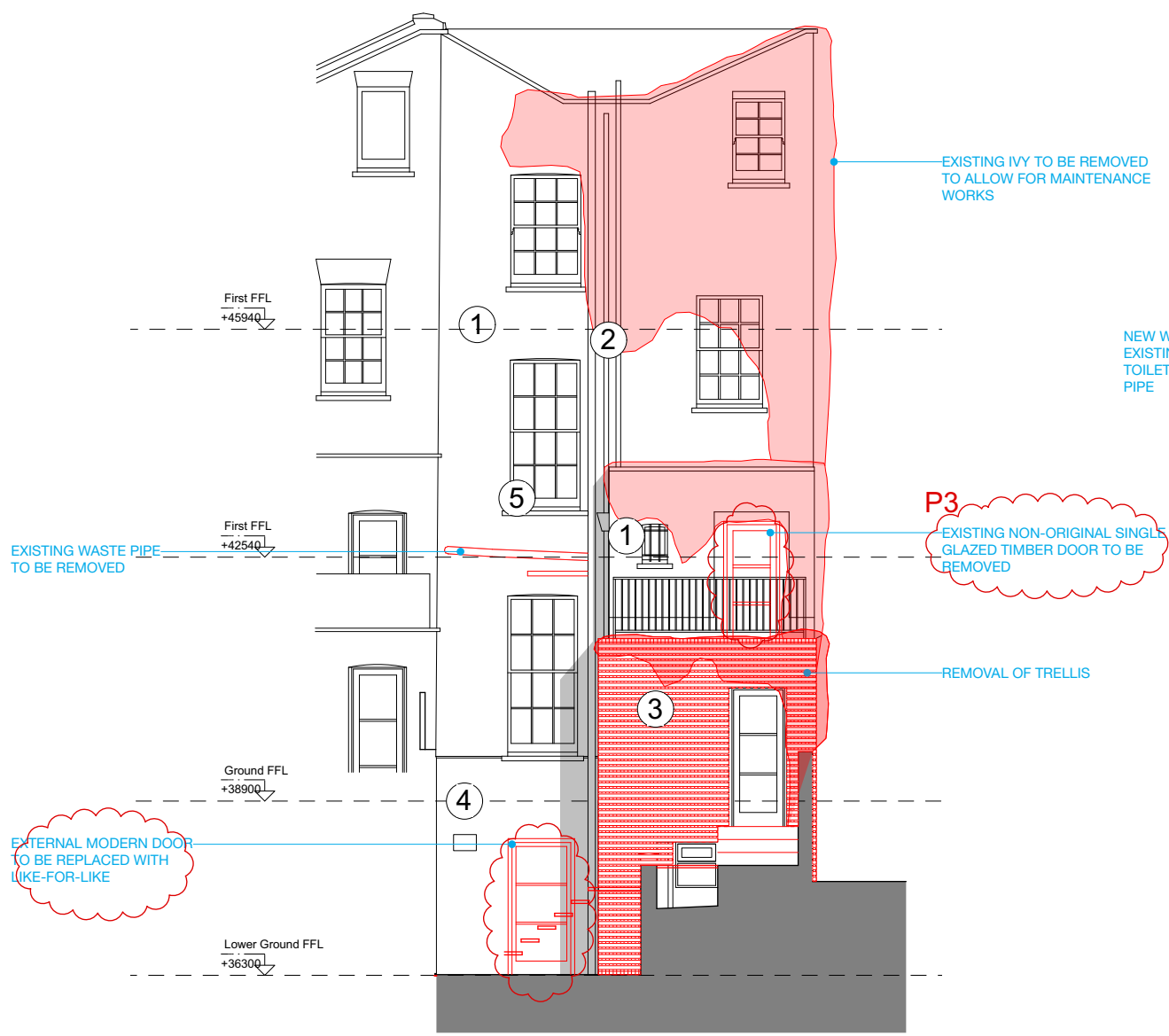
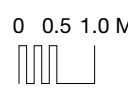
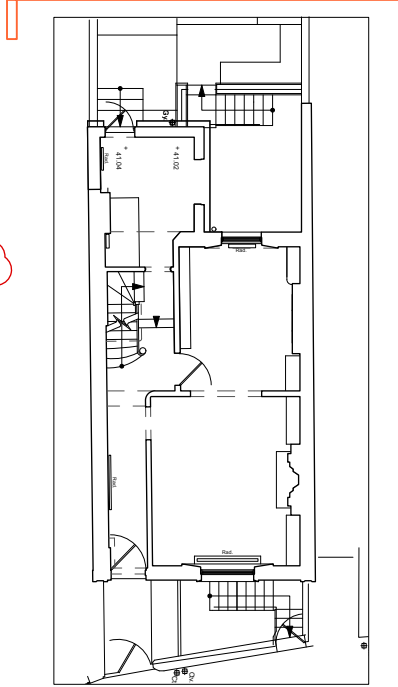
For construction purposes:
 - Do not scale this drawing.
 - All dimensions and levels to be checked on site.
 - Discrepancies to be reported to Miltiadou Cook Mitzman architects before proceeding.
 - If in any doubt about information on this drawing contact Miltiadou Cook Mitzman architects.

REVISION NUMBER	DATE	BY	NOTES
P1	02/02/2024	OS	Issued for planning
P2	15/05/2024	OS	Issued revisions for planning
P3	13/12/2024	OS	Issued for planning

PROPOSED BUILD UP (diagonal hatching)

EXISTING BUILD UP (grey fill)

DEMOLITION (red fill)



1 Rear Elevation-Existing & Demolition
1:100

2 Rear Elevation-Proposed
1:100

- MATERIALS:**
1. WHITE PAINT BRICKWORK (PAINT TO BE REMOVED)
 2. CAST IRON DRAINAGE PIPES (RETAINED)
 3. TIMBER TRELIS (DEMO)
 4. WHITE PAINTED RENDERED WALL (RETAINED)
 5. TIMBER FRAME WHITE PAINTED WINDOWS (RETAINED)
 6. YELLOW STOCK BRICKWORK (EXPOSED AND RETAINED)

MILTIADOU COOK MITZMAN architects llp
 MCMa
 020 7722 8525 office@mcma.design www.mcma.design
 10-12 Emerald Mews London WC1N 3QA

CLIENT
 Ian & Susan Ferguson

PROJECT
 7 Sharpleshall Street, NW1 8YL

SHEET TITLE
 Elevation 3 (Rear-South)-Existing, Demolition and Proposed

SCALE
 AS NOTED@A3

DATE CREATED **FILE REFERENCE**

DRAWING NUMBER	REVISION
408-DWG-011	P3