

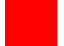


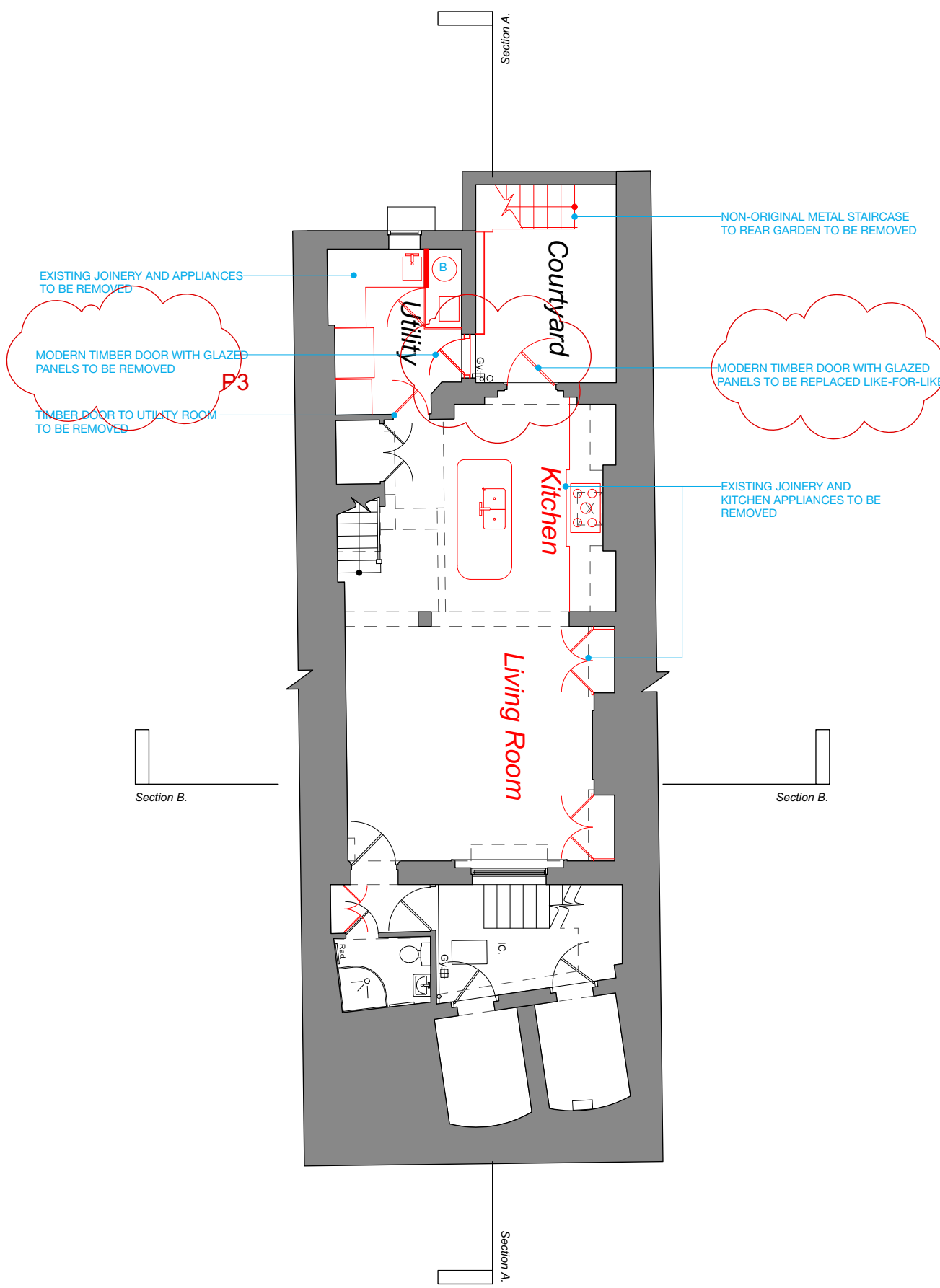
© This drawing is the property of Miltiadou Cook Mitzman architects. No disclosure or copy of it may be made without the written permission of Miltiadou Cook Mitzman architects.

**For construction purposes:**

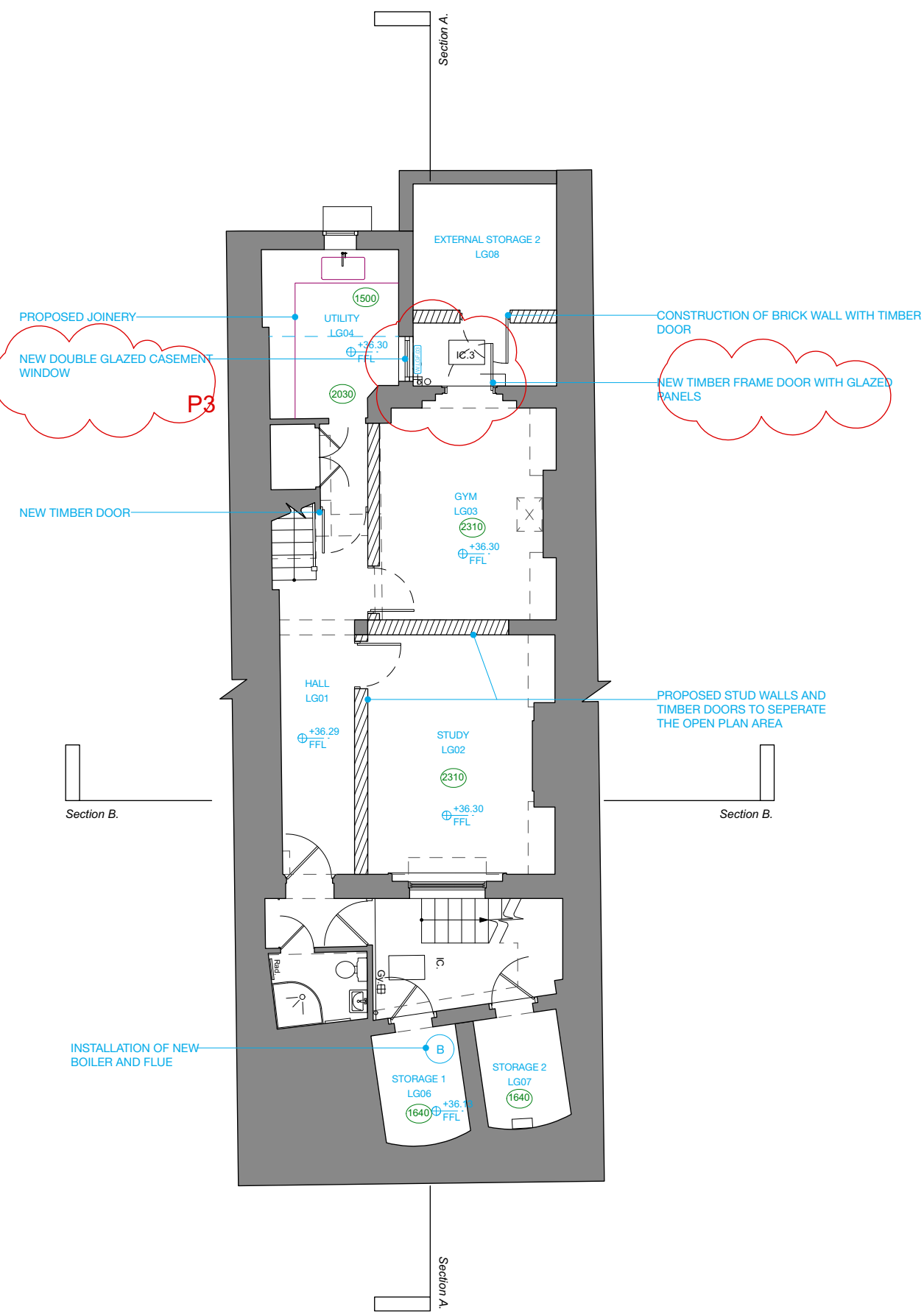
- Do not scale this drawing.
- All dimensions and levels to be checked on site.
- Discrepancies to be reported to Miltiadou Cook Mitzman architects before proceeding.
- If in any doubt about information on this drawing contact Miltiadou Cook Mitzman architects.

REVISION NUMBER	DATE	BY	NOTES
P1	02/02/2024	OS	Issued for planning
P2	15/05/2024	OS	Issued revisions for planning
P3	13/12/2024	OS	Issued for planning

 PROPOSED BUILD UP  
 EXISTING BUILD UP  
 DEMOLITION



1 Lower Ground Floor Plan-Existing & Demolition  
1:100



2 Lower Ground Floor Plan-Proposed  
1:100

 0 0.5 1.0 M  



**MILTIADOU COOK MITZMAN architects llp**

020 7722 8525 office@mcma.design www.mcma.design  
 10-12 Emerald Mews London WC1N 3QA

**CLIENT**  
 Ian & Susan Ferguson

**PROJECT**  
 7 Sharpleshall Street, NW1 8YL

**SHEET TITLE**  
 Lower Ground Floor Plan-Existing, Demolition and Proposed

**SCALE**  
 AS NOTED@A3

**DATE CREATED**      **FILE REFERENCE**

DRAWING NUMBER	REVISION
408-DWG-001	P3