

JCDecaux

Virgin location

London Borough of Camden

Shelter Advertising Proposal

Bus Shelter

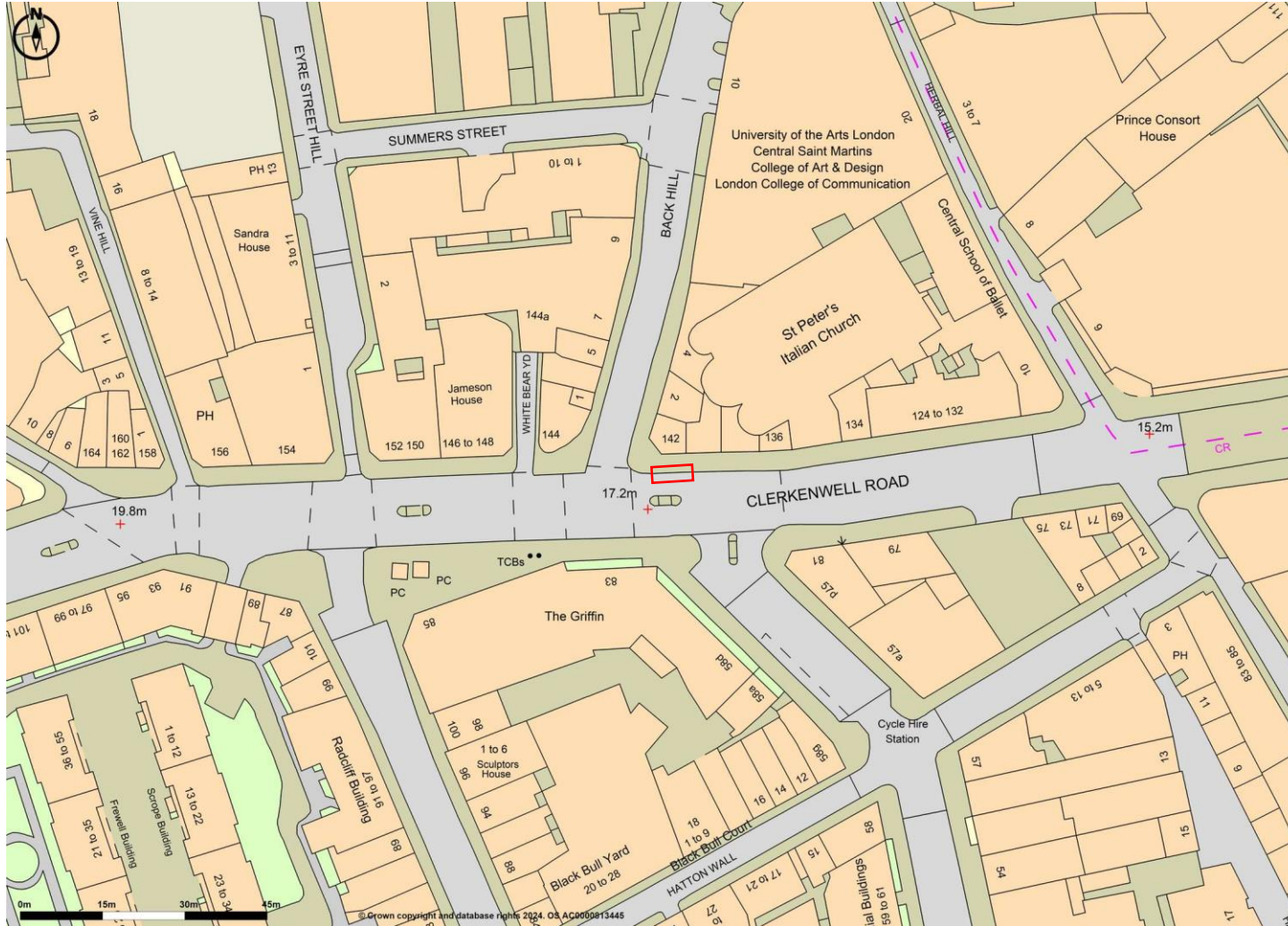
Outside 142 Clerkenwell Road EC1R 5DL

SITE PLAN & IMAGES

Easting:531262

Northing:182043

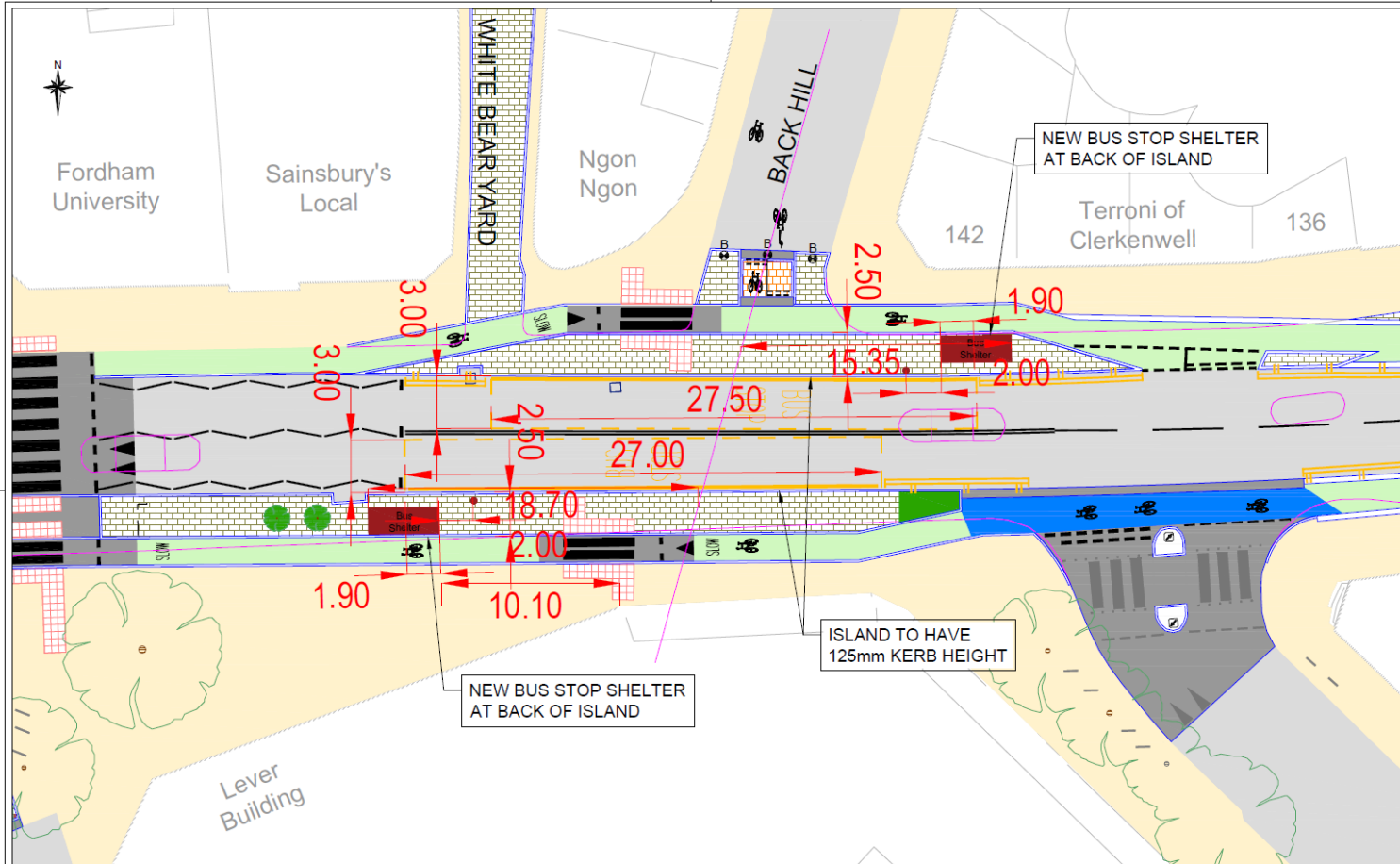
 APPLICATION SITE



Scale 1:1250



Easting:531262
 Northing:182043



Camden
 Design Team
 Transport Strategy Service
 London Borough of Camden
 5 Pancras Square
 Tel 020 7974 9552, Fax 020 7974 8952
 101 2106 London, M20 9EJ 020 7974 6966

Project: Safe and Healthy Streets
 Clerkenwell Road
 Drawing Title: New Bus Stops

Key	
[Symbol]	Proposed Kerb
[Symbol]	Proposed Buildouts/Footway
[Symbol]	Proposed Footway with Emergency Access
[Symbol]	Proposed Stopped Track
[Symbol]	Proposed Continuous Footway
[Symbol]	Proposed Blue Cycle Surface
[Symbol]	Proposed Raised Table/Dutch Kerts
[Symbol]	Proposed Greening

Rev	By	Date	Amendments

Scale: 1:200 @ A3	Date: OCT 24
Drawn by: DS	File Ref:
Checked by: AC	Orig Name:
Drawing Location:	
Drawing Number:	Rev: A





SITE IMAGES

Bus shelter: Design Norman Foster



Technical Description

JCDecaux

Bus shelter: Design Norman Foster



Modular design with standard roof sizes.

Single, double or passageway variants.

With or without full or half returns.

86" Digital Advertising screen.

Double or Single sided.

Shelter with maximum transparency and reduced glass size

Colours



Black
RAL 9005



Chain metal grey
JCD 7002



Pale grey
JCD 7006



Green khaki bronze
JCD 6004



Bellini grey
JCD 7032



Pine green
RAL 6009

Other colours from our range by customer choice.

Designed by Norman Foster and developed by JCDecaux

JCDecaux

Presentation

- Digital display in Forum design.
- Product specially designed for direct outdoor use in a wide range of environmental/temperature conditions and features.

General Product Information

Performance

- Excellent contrast and quality of image.
- Displays great quality fix images and video, thanks to its resolution 3840 x 2160 4K.
- Brightness up to 2500Cdm², the best performance available in the market for an LCD screen.

Robustness and Durability

- Product specially designed for direct outdoor use in a wide range of environmental/temperature conditions and features.
- Brightness level not affected by extreme temperatures and does not degrade over time like other technologies.
- Best in class product in term of visibility in direct sunshine. Improved reliability and life through expert thermal and solar management de
- Bumpers option to protect the furniture.

Certifications

CE

Manageability

- Extensive monitoring capability through digital image verification that gives immediate feedback about display performance.
- Intelligent monitoring/control and maintenance features.

Modularity

- Available in Forum and iVision designs.
- Modular design for simple on-site service.

Vandalism

- Front-face in laminated 8mm tempered glass.
- Furniture opening guaranteed by the use of special keys.
- Screws and fixing gears are invisible.
- Furniture composed of unalterable materials.
- Encrypted transmission between JCDecaux NOC and the digital displays.
- High quality materials and coating.



Bus shelter: Design Norman Foster

Structure

Main Frame
Comprised of two cylindrical posts that support the bench cross member and the whole roof
Post fitted with a trapdoor to facilitate electrical connections and cable management.
Calculated to resist winds of 180 km/h
Enables inclines of up to 4% to be absorbed without any specific part.

Glass

The Non Ad variant comprises 6 back glasses to the rear of the shelter resulting reduced weight of individual glasses to ease maintenance operations. Return glasses are usually full width of the shelter or half. They can have tailored screen printing to identify the shelters which also improves identifying they are there if contrasting colours are chosen
All glass is tempered safety glass 10 mm thick.
Glasses maintain a gap with the ground to prevent debris collecting.
Excellent visibility of oncoming traffic and buses and keeping any concealed areas to a minimum.

Roof

A welded steel construction, supporting 6 panels of toughened laminated glass, which cannot fall in the event of breakage
The glass is specially treated to reduce the heat of the sun rays by more than 50%
Waterproofing is ensured by seals fitted in the glazing bars
Maximum acceptable weight of 180 kg/m²
Sloped at 3° so that rainwater flows towards the rear of the shelter.

Bench

Comprised of a seat for 2 to 6 people
Fixed to the shelter's structure by means of a bar acting as a backrest in an ergonomic shape
Central separation prevent misuse of the bench.
An ergonomically designed seat.
In the case of back glass breakage reduced trip hazards.
Does not require a foundation.
Secured with tamper-proof fixings to prevent vandalism

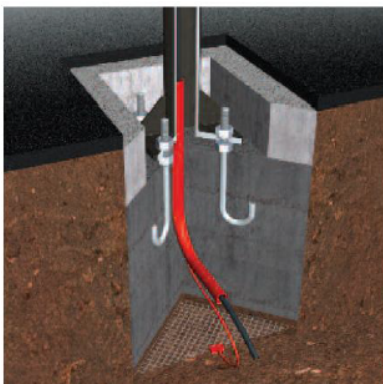
Examples of materials used:

MATERIALS	ANTI-CORROSION TREATMENT	FINISH	MAIN ITEMS
steel	shot dip galvanizing spun galvanizing	80 micron powder coating	posts bench arms roof glasslegs foundation anchors
stainless steel	passivation	beadblasting and electropolishing	bench seats fixings
aluminium	anodisation	80 micron powder coating	adcase Timetable case
toughened glass		silk screen printed enamel	vertical glass
aluminium composite			roof
synthetic rubber		mass pigmented	seals
B25 concrete			foundations

Bus shelter: Design Norman Foster

Foundation

Unit anchored on solid concrete fittings buried to conceal fasteners
Fitted with an electricity input duct and an earth grid
Calculated according to the region where it is installed



Foundation principle

Standards

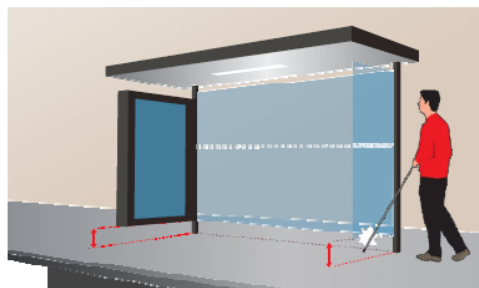
Design and manufacture certified ISO 9001 and ISO 14001.

Environmental aspects

Electric and electronic equipment recycled according to WEEE regulations.
Furniture made from durable and recyclable materials.
Full product life cycle analysis available.

Visibility

The lowest parts of the shelter no more than 20 cm from the ground so that it can be detected with a white cane.
Silk-screen printed warning bands on return glass are available to reduce risk of bumping into the glass.



Resistance to vandalism

Anti-impact protection index > IK 10 (corresponding to the impact of a 2 kg metal ball falling one metre)
All doors and access hatches are unlocked by means of a special designed key.
Standard anti-vandal and JCDecaux specific fixings.
A special designed screw is used for the visible fastenings (glass brackets, lighting, etc.) to avoid malicious dismantling of the glazing.
In the event of it smashes the glass is designed to fragment into small pieces reducing the risk of injury.
No visible cables or ducting.
Furniture made up of non-flammable materials
In sensitive areas, the rear glass panels may be replaced by walls in perforated sheet metal

