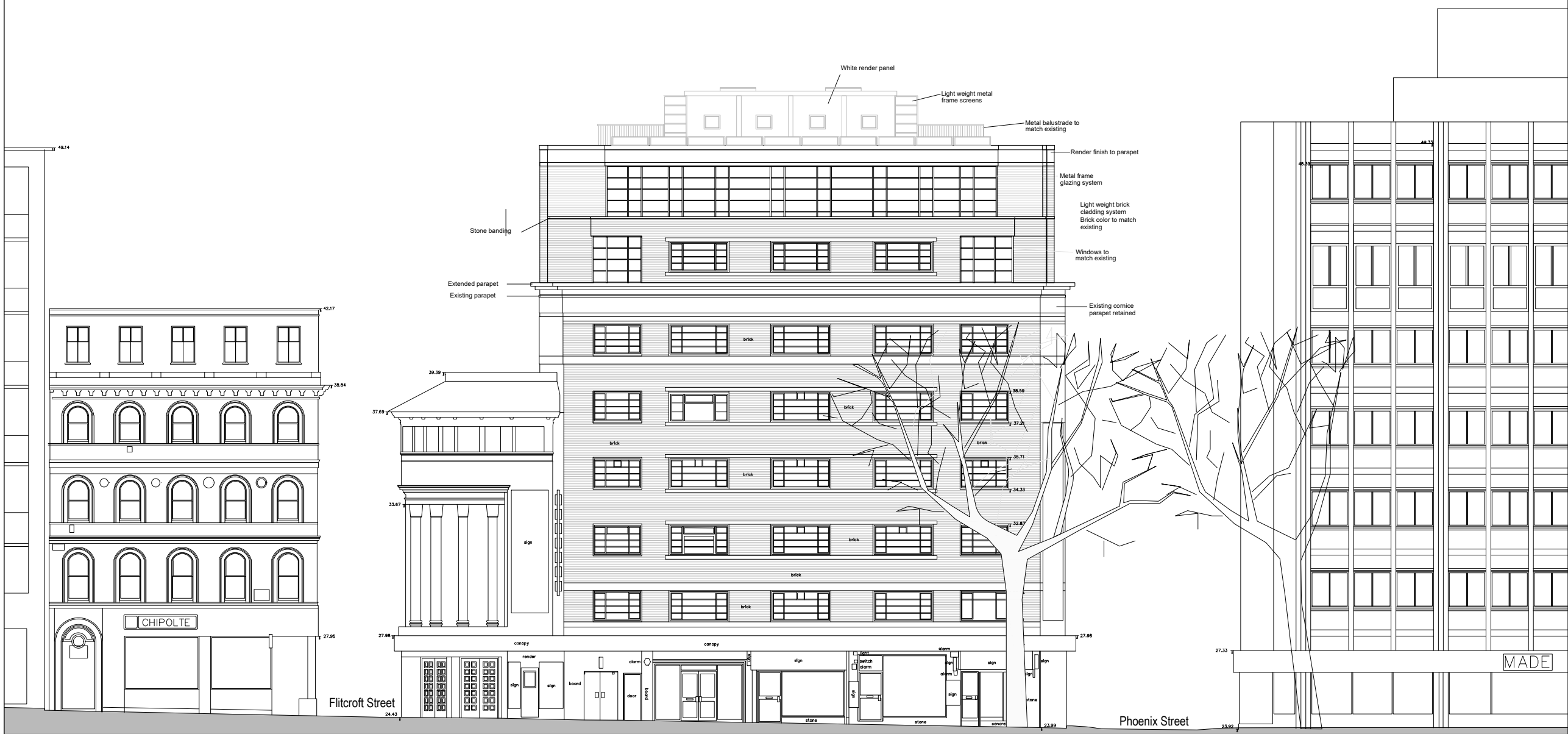


Do not scale from this drawing, except for town planning purposes.
 Work to figured dimensions only.
 This drawing is the property of Brimelow McSweeney Architects and copyright is reserved by them.
 This drawing is issued on condition that it is not copied, used or disclosed by or to any unauthorised person without the prior written consent of Brimelow McSweeney Architects.
 The areas on the drawing have been measured directly from a CAD drawing and have no tolerances added or subtracted.
 The areas have been calculated in accordance with the Code of Measuring Practice, 6th Edition (2007) using the stated options NIA, GIA, GEA. They are approximate and relate to the likely areas of the building at the current state of the design. Any decisions to be made on the basis of these predictions, whether as to project viability, pre-letting, lease agreements and the like, should make allowance for the following:
 - Design development
 - Accurate site survey, site levels and dimensions need to be fully evaluated
 - Allowance for construction methods and building tolerances.
 - Local authority consents
 rev date drawn by chkd description
 / 17.09.24 NPA SE Issued for Planning



WEST ELEVATION CHARING CROSS ROAD

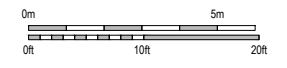
status **FOR PLANNING**

BRIMELOW McSWEENEY ARCHITECTS
 26 Great Queen Street, Covent Garden, London WC2B 5EL
 tel: 020 7631 7835 - email: admin@bm-architects.co.uk

project
Phoenix House
 104-110 Charing Cross Road, WC2H 0JN

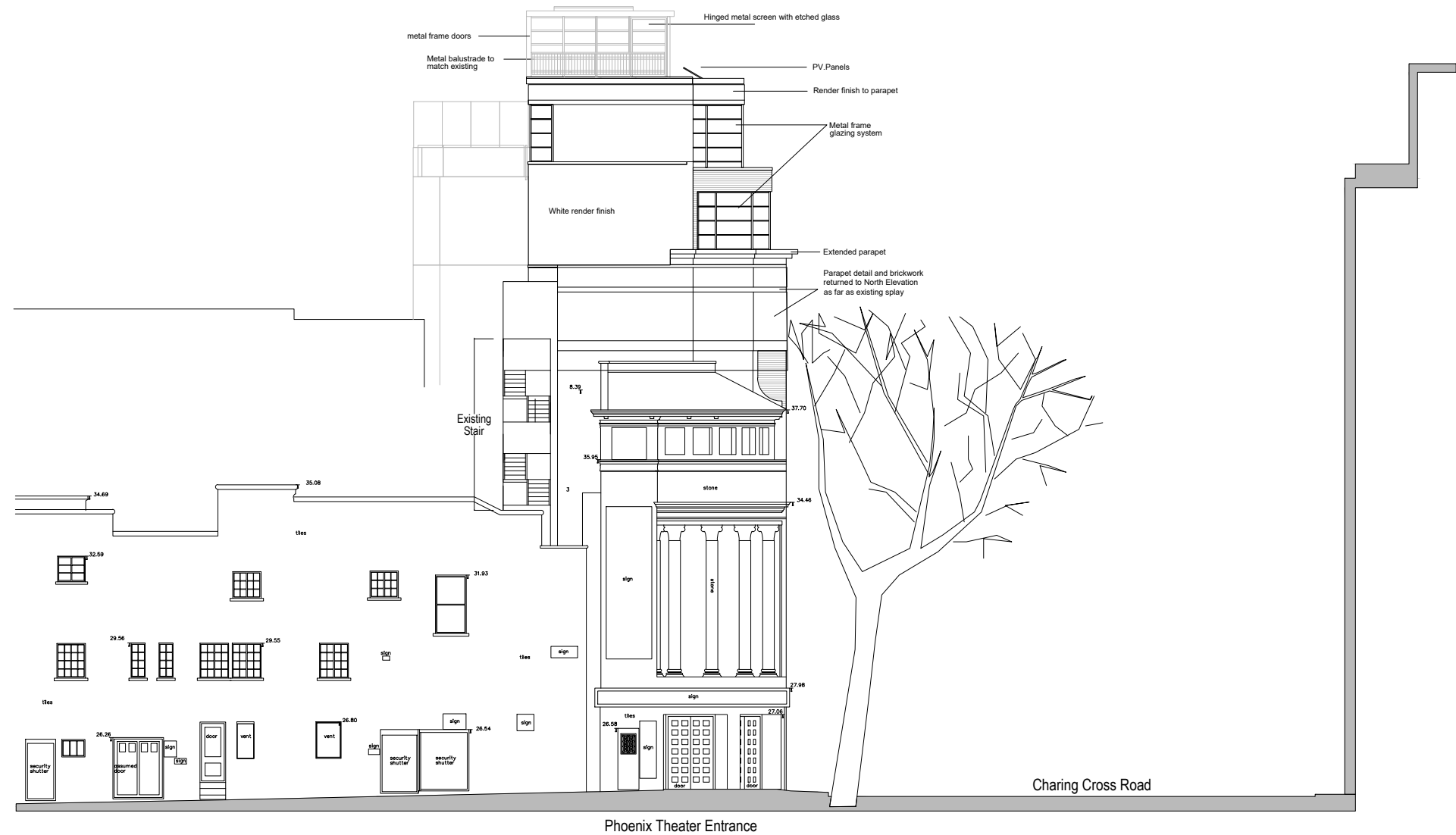
title
 Previously Consented
 West Elevation

scale 1:200@A3 date 09-24 drawn NPA
 drawing no. 2425-0300 revision

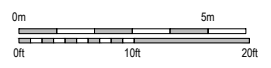


Do not scale from this drawing, except for town planning purposes.
 Work to figured dimensions only.
 This drawing is the property of Brimelow McSweeney Architects and copyright is reserved by them.
 This drawing is issued on condition that it is not copied, used or disclosed by or to any unauthorised person without the prior written consent of Brimelow McSweeney Architects.
 The areas on the drawing have been measured directly from a CAD drawing and have no tolerances added or subtracted.
 The areas have been calculated in accordance with the Code of Measuring Practice, 6th Edition (2007) using the stated options NIA, GIA, GEA. They are approximate and relate to the likely areas of the building at the current state of the design. Any decisions to be made on the basis of these predictions, whether as to project viability, pre-letting, lease agreements and the like, should make allowance for the following:
 - Design development
 - Accurate site survey, site levels and dimensions need to be fully evaluated
 - Allowance for construction methods and building tolerances.
 - Local authority consents

rev date drawn by chkd description
 / 17.09.24 NPA SE Issued for Planning



NORTH ELEVATION FLITCROFT STREET



status **FOR PLANNING**

BRIMELOW McSWEENEY ARCHITECTS
 25 Great Queen Street, Covent Garden, London WC2B 5EQ
 tel: 020 7831 7835 - email: admin@bm-architects.co.uk

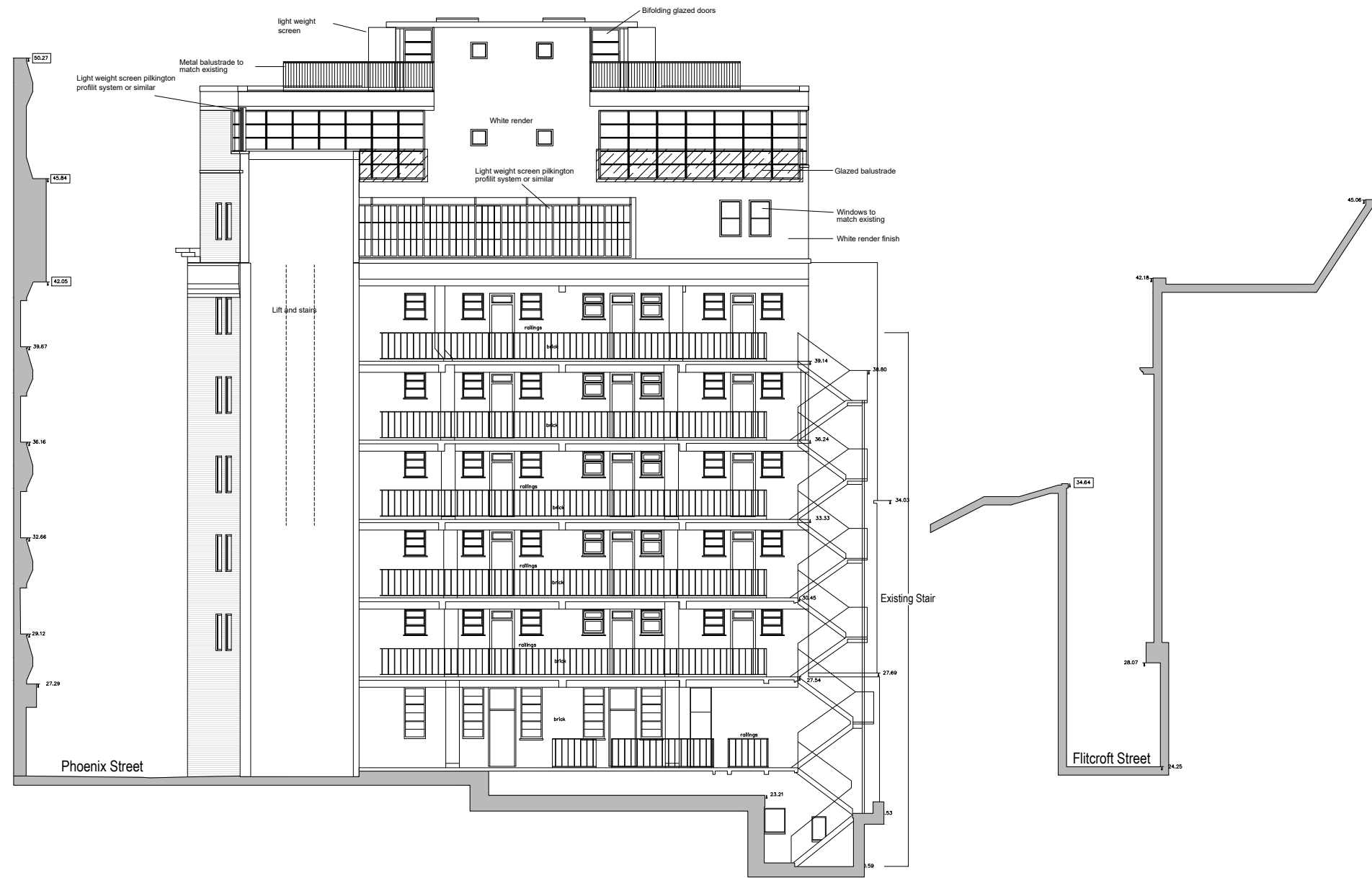
project
Phoenix House
 104-110 Charing Cross Road, WC2H 0JN

title
 Previously Consented
 North Elevation

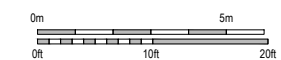
scale 1:200@A3 date 09-24 drawn NPA
 drawing no. 2425-0301 revision

Do not scale from this drawing, except for town planning purposes.
 Work to figured dimensions only.
 This drawing is the property of Brimelow McSweeney Architects and copyright is reserved by them.
 This drawing is issued on condition that it is not copied, used or disclosed by or to any unauthorised person without the prior written consent of Brimelow McSweeney Architects.
 The areas on the drawing have been measured directly from a CAD drawing and have no tolerances added or subtracted.
 The areas have been calculated in accordance with the Code of Measuring Practice, 6th Edition (2007) using the stated options NIA, GIA, GEA. They are approximate and relate to the likely areas of the building at the current state of the design. Any decisions to be made on the basis of these predictions, whether as to project viability, pre-letting, lease agreements and the like, should make allowance for the following:
 - Design development
 - Accurate site survey, site levels and dimensions need to be fully evaluated
 - Allowance for construction methods and building tolerances.
 - Local authority consents

rev date drawn by chkd description
 / 17.09.24 NPA SE Issued for Planning



EAST ELEVATION REAR



status FOR PLANNING

**BRIMELOW
 McSWEENEY
 ARCHITECTS** 
 25 Great Queen Street, Covent Garden, London WC2B 5EQ
 tel: 020 7831 7835 - email: admin@bm-architects.co.uk

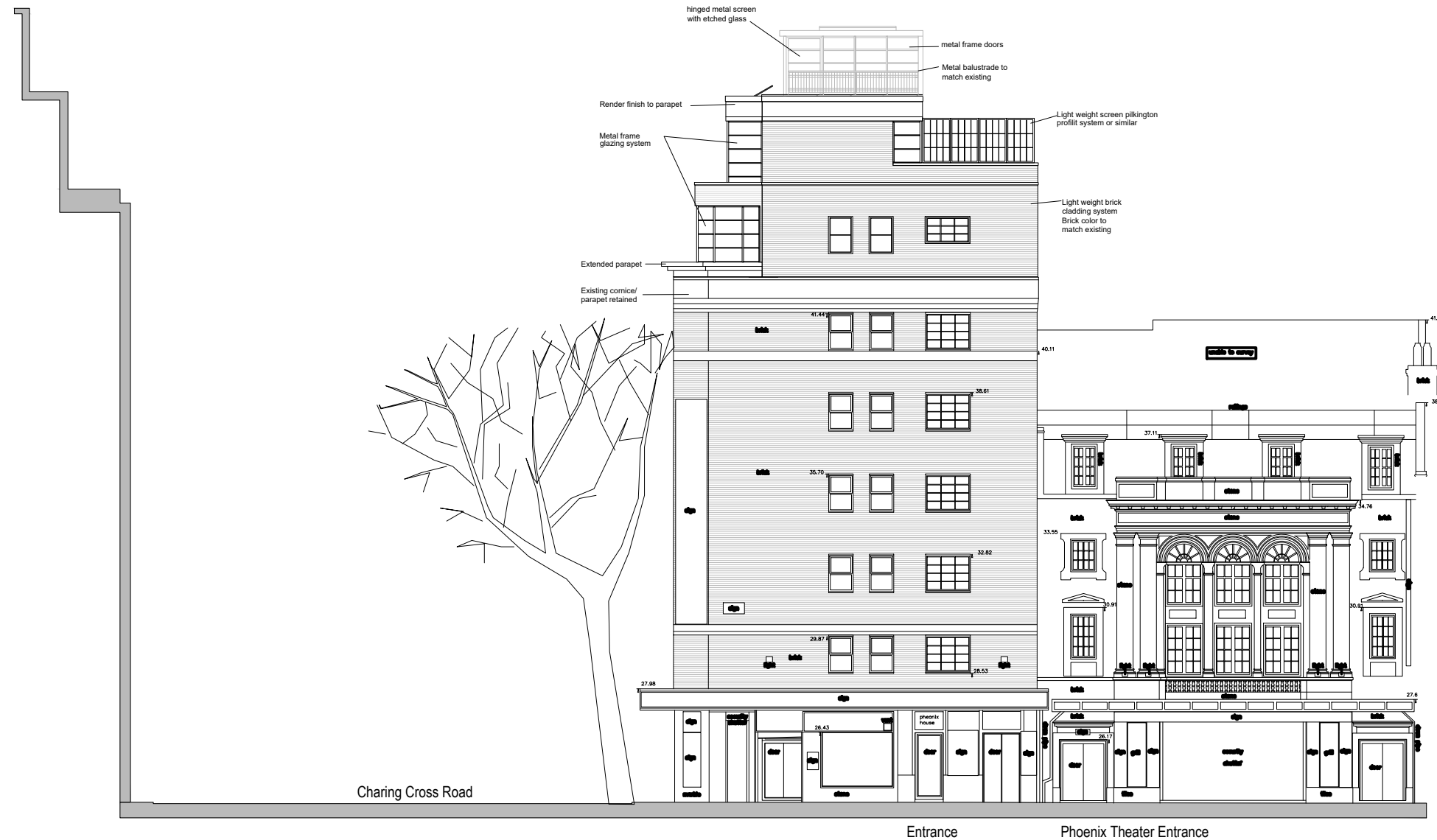
project
 Phoenix House
 104-110 Charing Cross Road, WC2H 0JN

title
 Previously Consented
 East Elevation

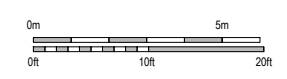
scale	date	drawn
1:200@A3	09-24	NPA

drawing no.	revision
2425-0302	.

Do not scale from this drawing, except for town planning purposes.
 Work to figured dimensions only.
 This drawing is the property of Brimelow McSweeney Architects and copyright is reserved by them.
 This drawing is issued on condition that it is not copied, used or disclosed by or to any unauthorised person without the prior written consent of Brimelow McSweeney Architects.
 The areas on the drawing have been measured directly from a CAD drawing and have no tolerances added or subtracted.
 The areas have been calculated in accordance with the Code of Measuring Practice, 6th Edition (2007) using the stated options NIA, GIA, GEA. They are approximate and relate to the likely areas of the building at the current state of the design. Any decisions to be made on the basis of these predictions, whether as to project viability, pre-letting, lease agreements and the like, should make allowance for the following:
 - Design development
 - Accurate site survey, site levels and dimensions need to be fully evaluated
 - Allowance for construction methods and building tolerances.
 - Local authority consents
 rev date drawn by chkd description
 / 17.09.24 NPA SE Issued for Planning



SOUTH ELEVATION PHOENIX STREET



status **FOR PLANNING**

BRIMELOW McSWEENEY ARCHITECTS
 26 Great Queen Street, Covent Garden, London WC2B 5EL
 tel: 020 7831 7835 - email: admin@bm-architects.co.uk

project
Phoenix House
 104-110 Charing Cross Road, WC2H 0JN

title
 Previously Consented
 West Elevation

scale	date	drawn
1:200@A3	09-24	NPA
drawing no.	revision	
2425-0303		