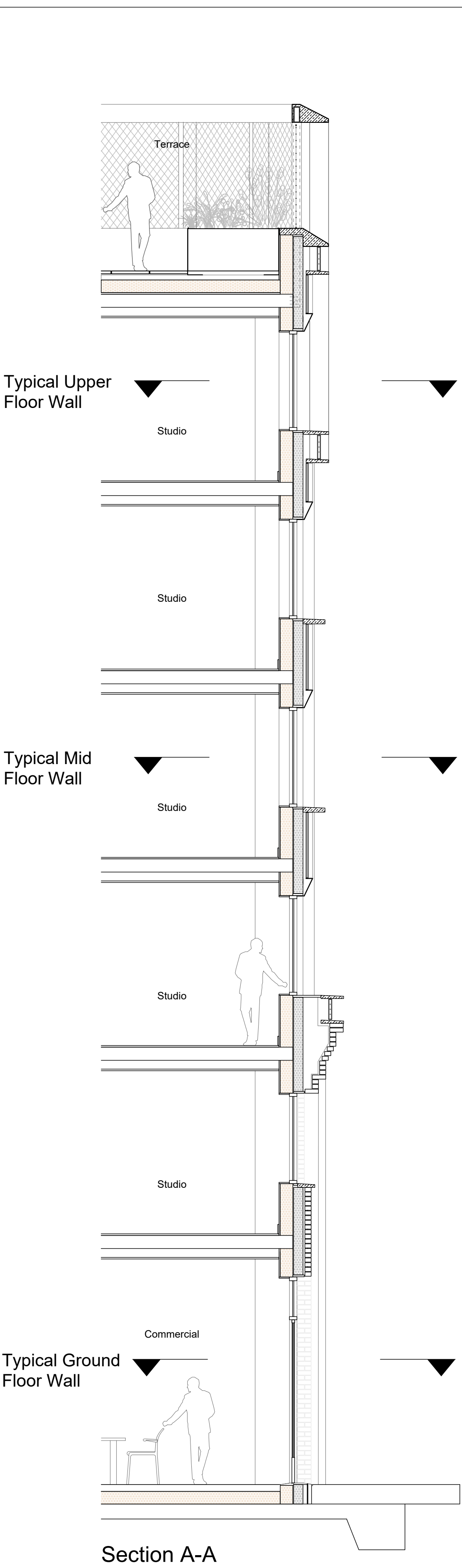
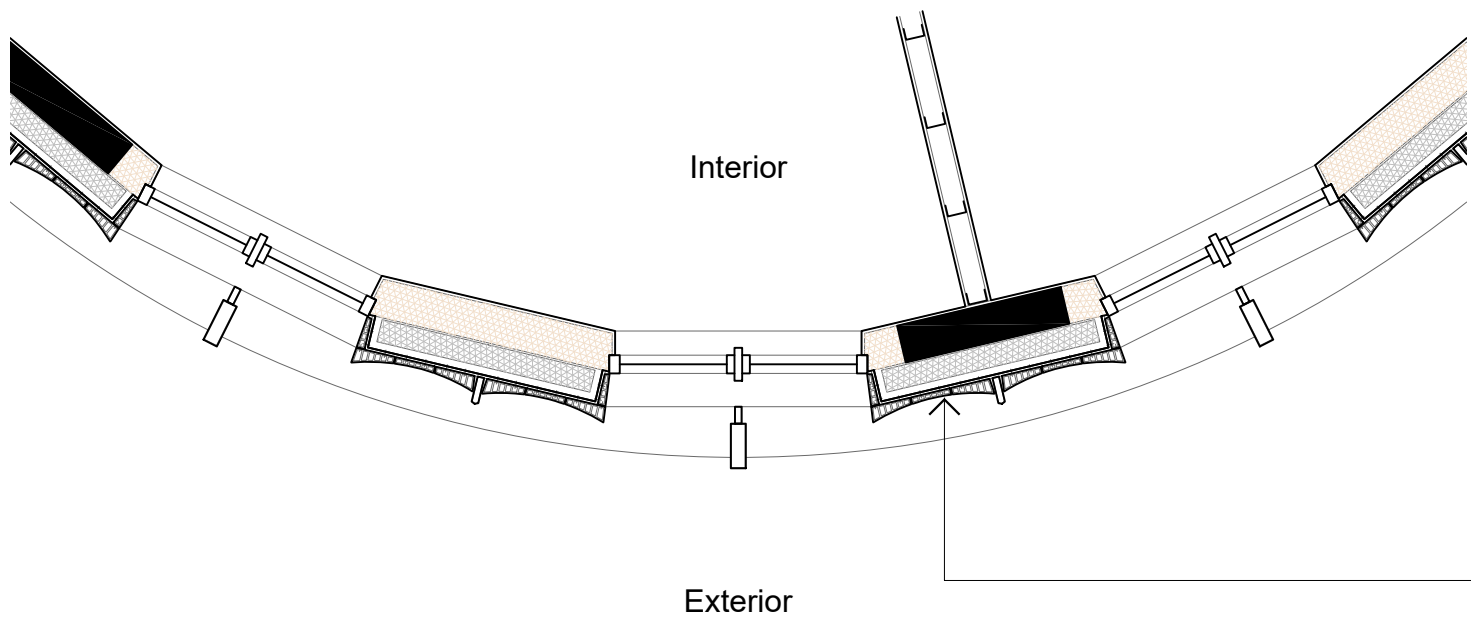


Elevation

A

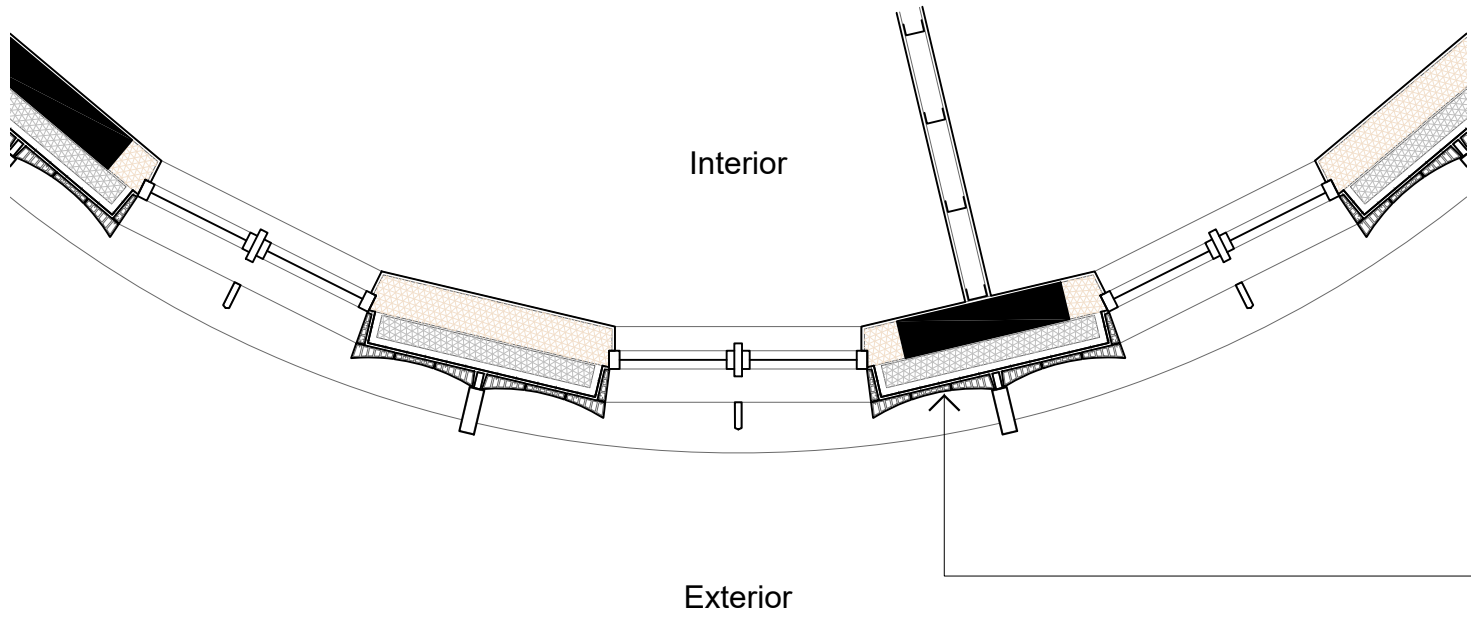


Section A-A



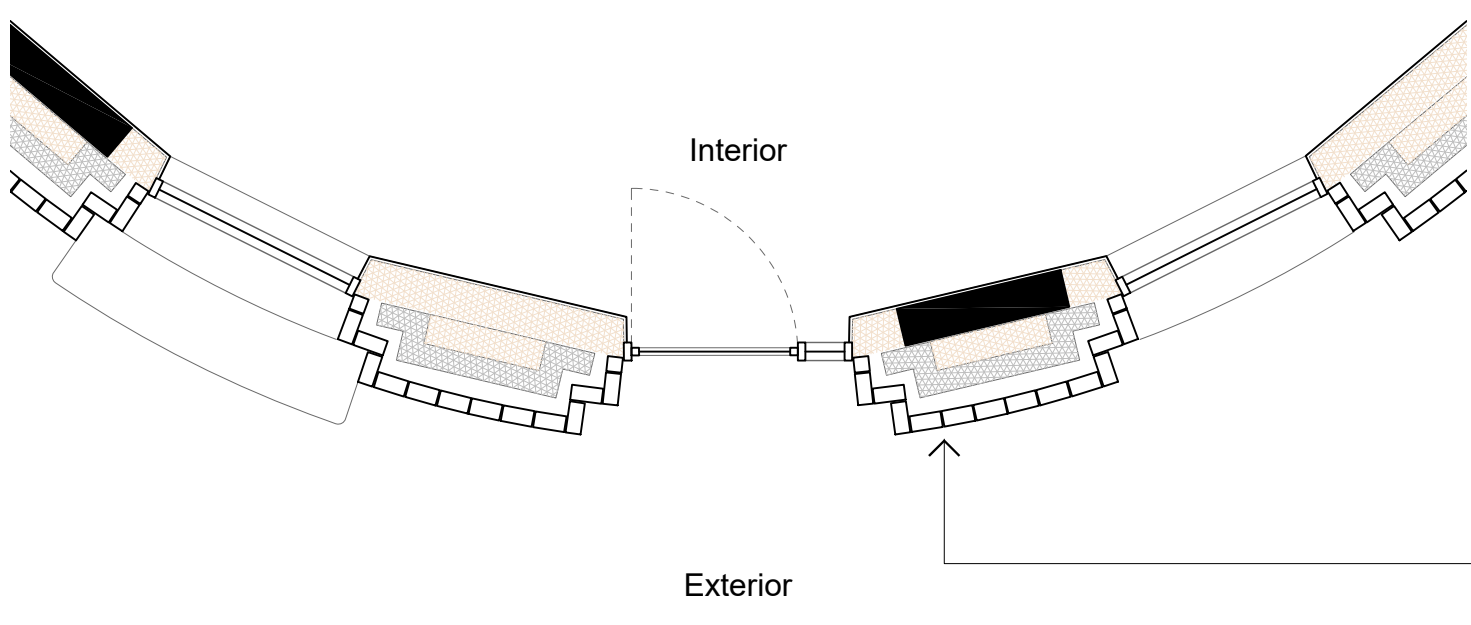
## Typical Upper Floor Wall Design Intent Plan

- Metsec SFS Infill Wall.
- 3mm gypsum plaster skim
- 12.5mm plasterboard
- Vapour Barrier
- 200mm depth metsec steel framing
- 200mm Rockwool Flexi insulation
- 10mm cement-bonded particleboard
- 120mm Rockwool Rainscreen Duo insulation
- Breather membrane
- 50mm – galvanised steel framing
- 80mm – profiled terracotta panels



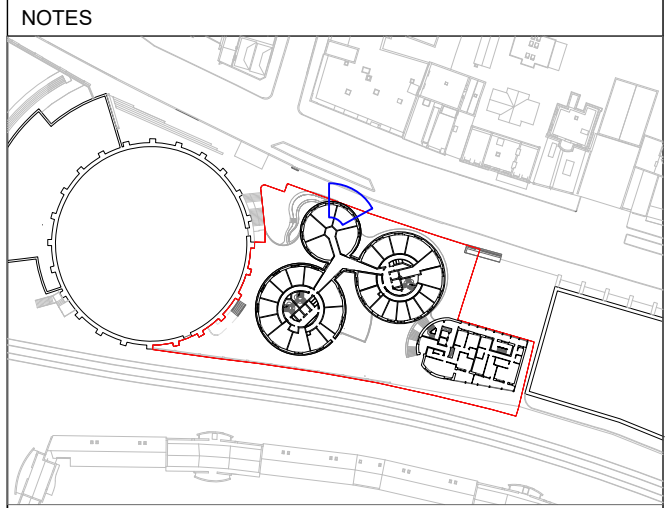
## Typical Mid Floor Wall Design Intent Plan

- Metsec SFS Infill Wall.
- 3mm gypsum plaster skim
- 12.5mm plasterboard
- Vapour Barrier
- 200mm depth metsec steel framing
- 200mm Rockwool Flexi insulation
- 10mm cement-bonded particleboard
- 120mm Rockwool Rainscreen Duo insulation
- Breather membrane
- 50mm – galvanised steel framing
- 80mm – profiled terracotta panels



## Typical Ground Floor Wall Design Intent Plan

- Loadbearing Brickwork Wall.
- 3mm gypsum plaster skim
- 12.5mm plasterboard
- Vapour Barrier
- 200mm depth metsec steel framing
- 200mm Rockwool Flexi insulation
- 10mm cement-bonded particleboard
- 120mm Rockwool Rainscreen Duo insulation
- Breather membrane
- Galvanised steel brick ties at 225mm vertical centres
- 50mm – cavity
- 105mm – facing brick



- Site Boundary
- Bay Study Location

30/05/24 Planning Revision B  
28/05/24 Planning

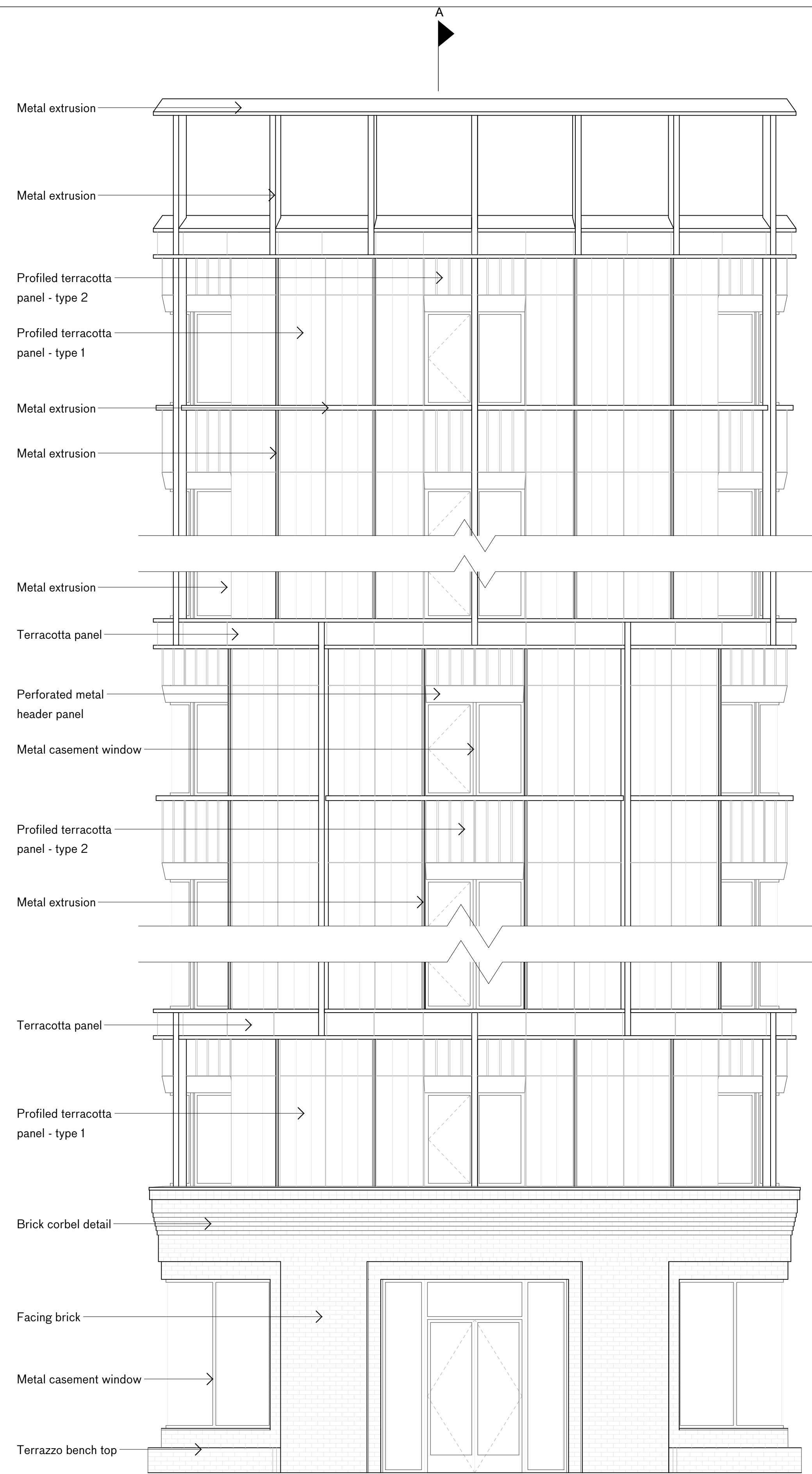
# PLANNING

| rev  | date | check   | comments |
|--|------|---|----------|
| <b>DSDHA</b><br>357 Kennington Lane London SE11 5QY<br>T 020 7703 3555<br>F 020 7703 3890<br>E info@dsdha.co.uk<br>W www.dsdha.co.uk |      |   |          |
| project  |      |   |          |
| 100 Chalk Farm Road  |      |   |          |
| drawing title  |      |   |          |
| PBSA North Drum Bay Study  |      |   |          |
| drawn  | size | date  | scale    |
| F1   | A1   | 28/05/24  | 1 : 50   |
| drawing number   |      |   | revision |
| 356_P50.001  |      |   | B        |
| REPORT DISCREPANCIES<br>DO NOT SCALE FROM THIS DRAWING<br>COPYRIGHT DSDHA  |      | USE LATEST REVISION<br>CHECK DIMENSIONS ON SITE |          |

## PBSA North Drum Bay Study

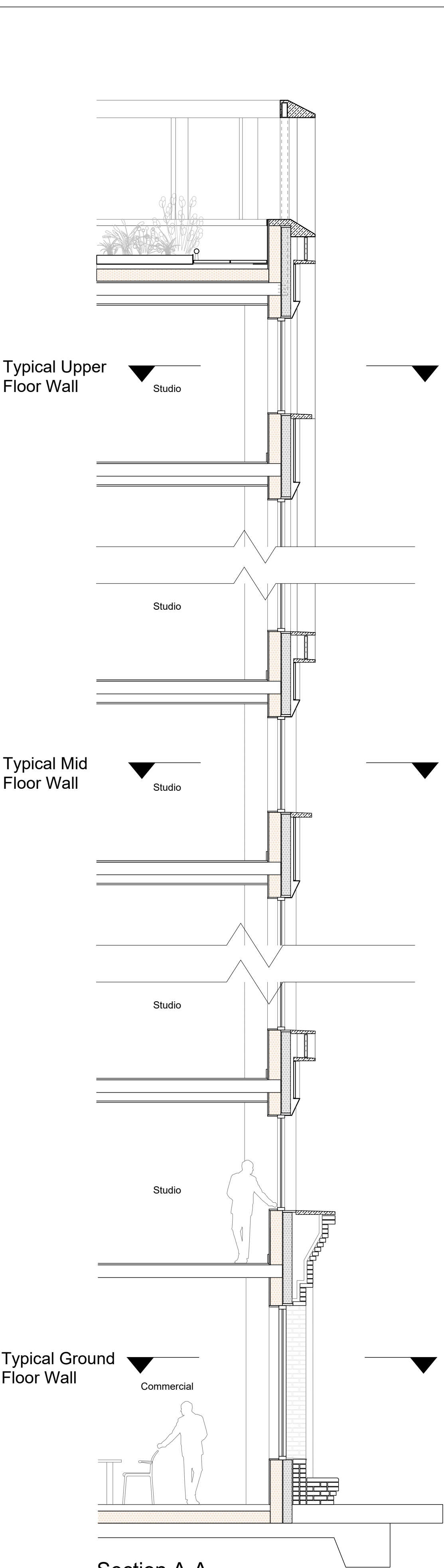




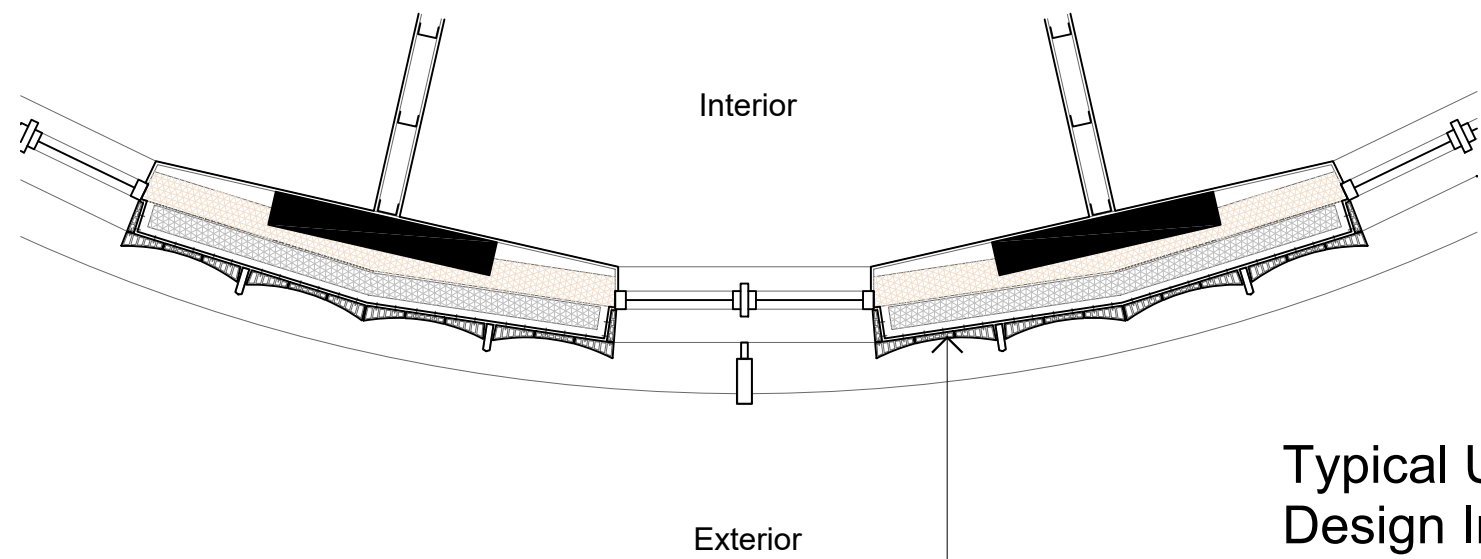


Elevation

# PBSA East Drum Bay Study



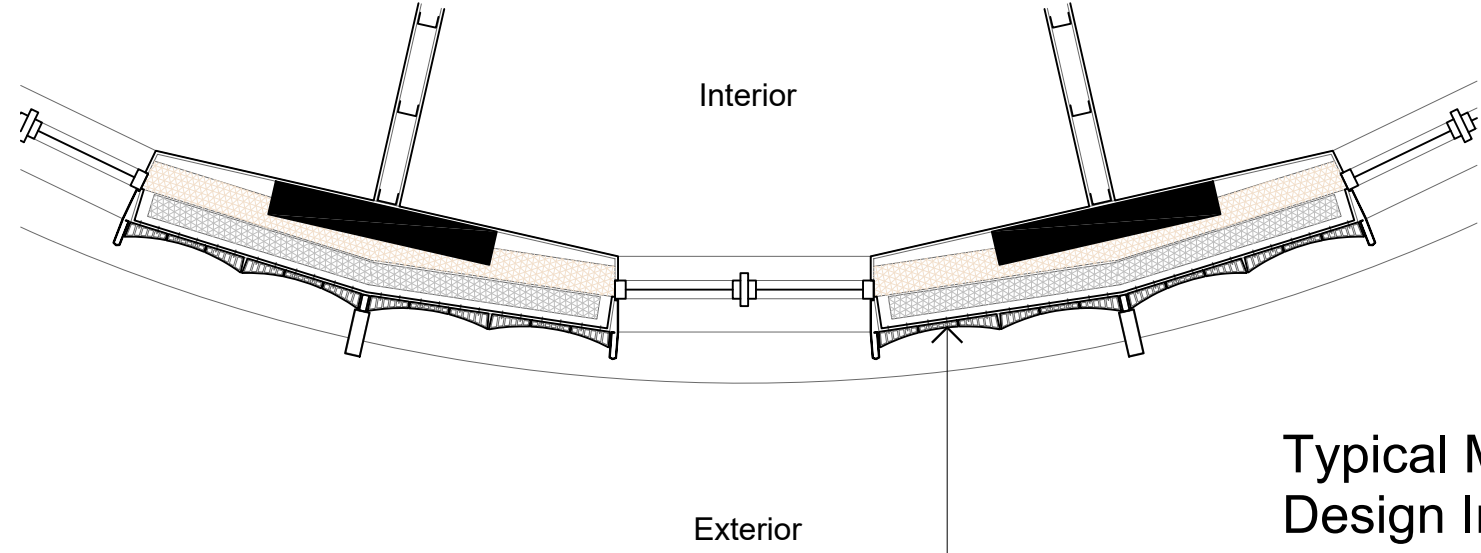
Section A-A



Typical Upper Floor Wall Design Intent Plan

Metsec SFS Infill Wall.

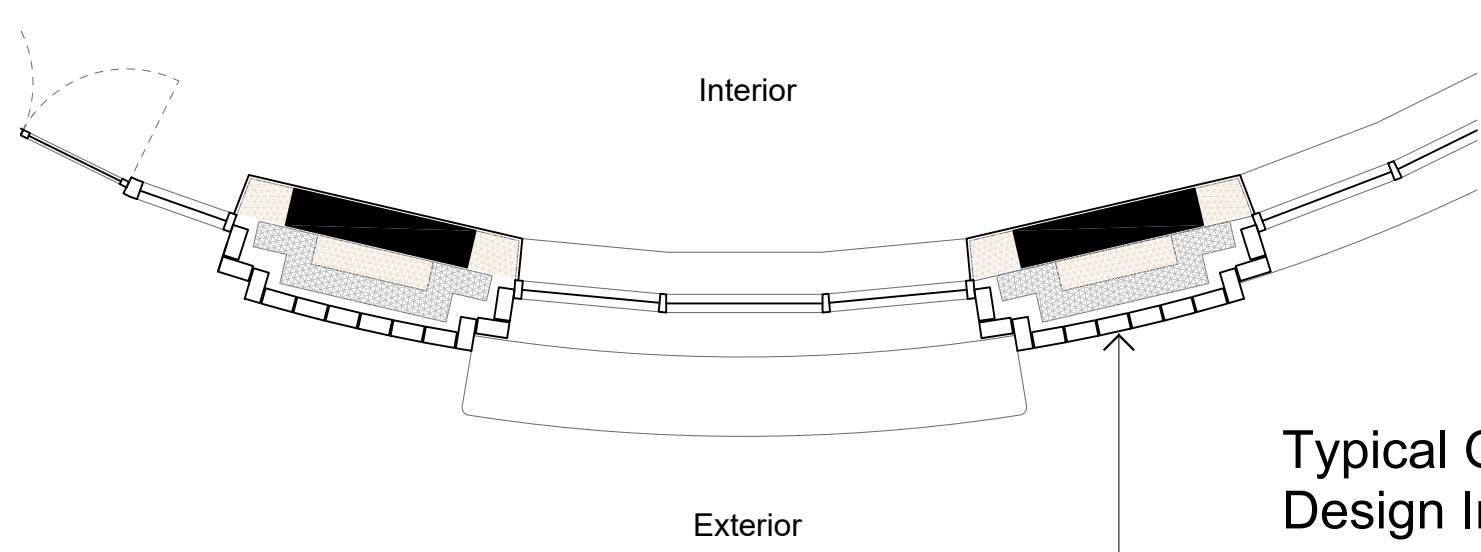
- 3mm gypsum plaster skim
- 12.5mm plasterboard
- Vapour Barrier
- 200mm depth metsec steel framing
- 200mm Rockwool Flexi insulation
- 10mm cement-bonded particleboard
- 120mm Rockwool Rainscreen Duo insulation
- Breather membrane
- 50mm – galvanised steel framing
- 80mm – profiled terracotta panels



Typical Mid Floor Wall Design Intent Plan

Metsec SFS Infill Wall.

- 3mm gypsum plaster skim
- 12.5mm plasterboard
- Vapour Barrier
- 200mm depth metsec steel framing
- 200mm Rockwool Flexi insulation
- 10mm cement-bonded particleboard
- 120mm Rockwool Rainscreen Duo insulation
- Breather membrane
- 50mm – galvanised steel framing
- 80mm – profiled terracotta panels

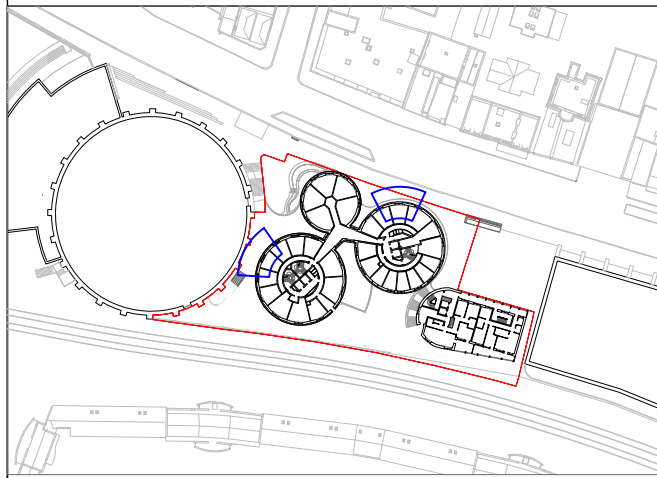


Typical Ground Floor Wall Design Intent Plan

Loadbearing Brickwork Wall.

- 3mm gypsum plaster skim
- 12.5mm plasterboard
- Vapour Barrier
- 200mm depth metsec steel framing
- 200mm Rockwool Flexi insulation
- 10mm cement-bonded particleboard
- 120mm Rockwool Rainscreen Duo insulation
- Breather membrane
- Galvanised steel brick ties at 225mm vertical centres
- 50mm – cavity
- 105mm – facing brick

## NOTES



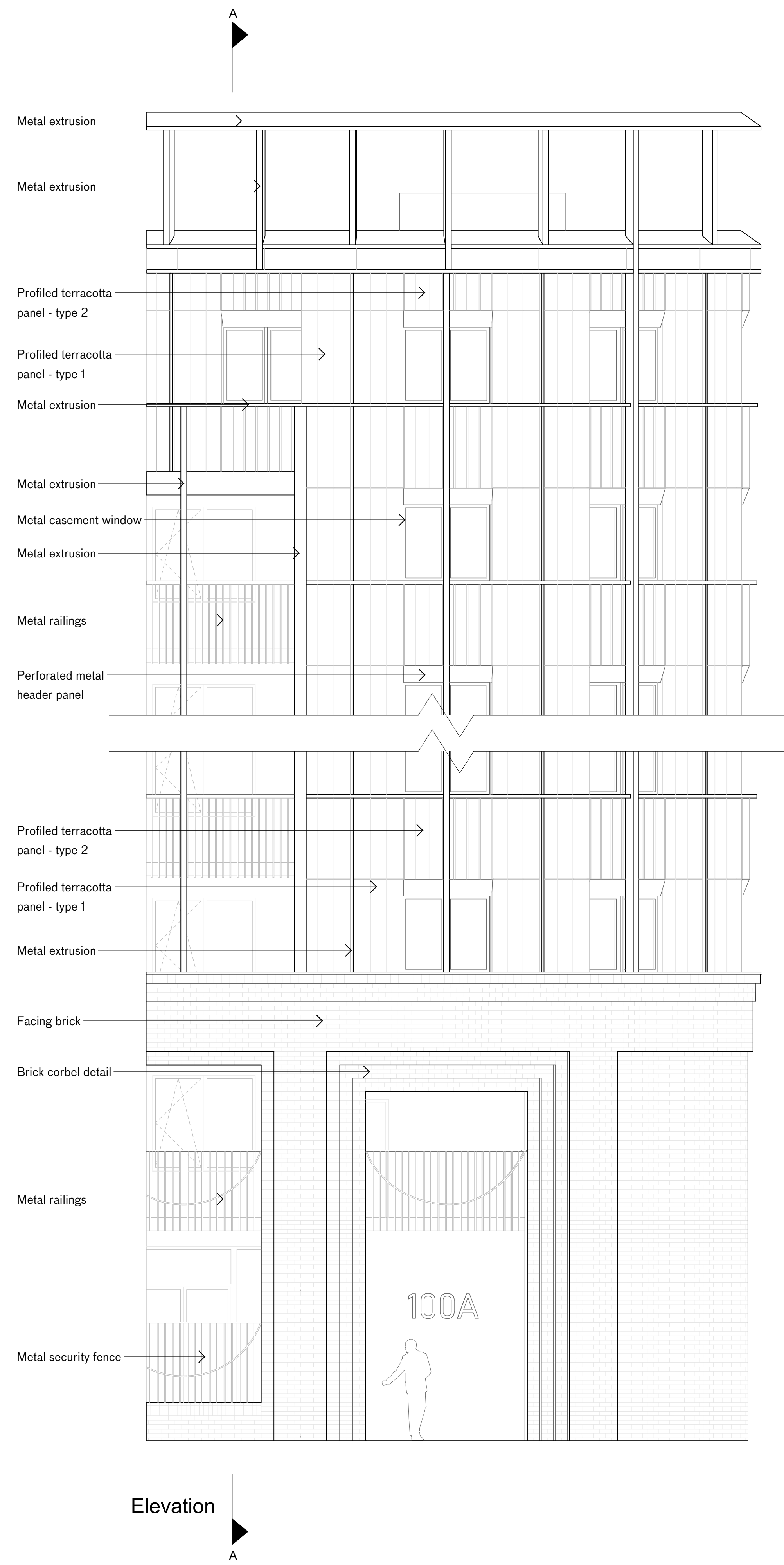
- Site Boundary
- Bay Study Location

30/05/24 Planning Revision B  
28/05/24 Planning

# PLANNING

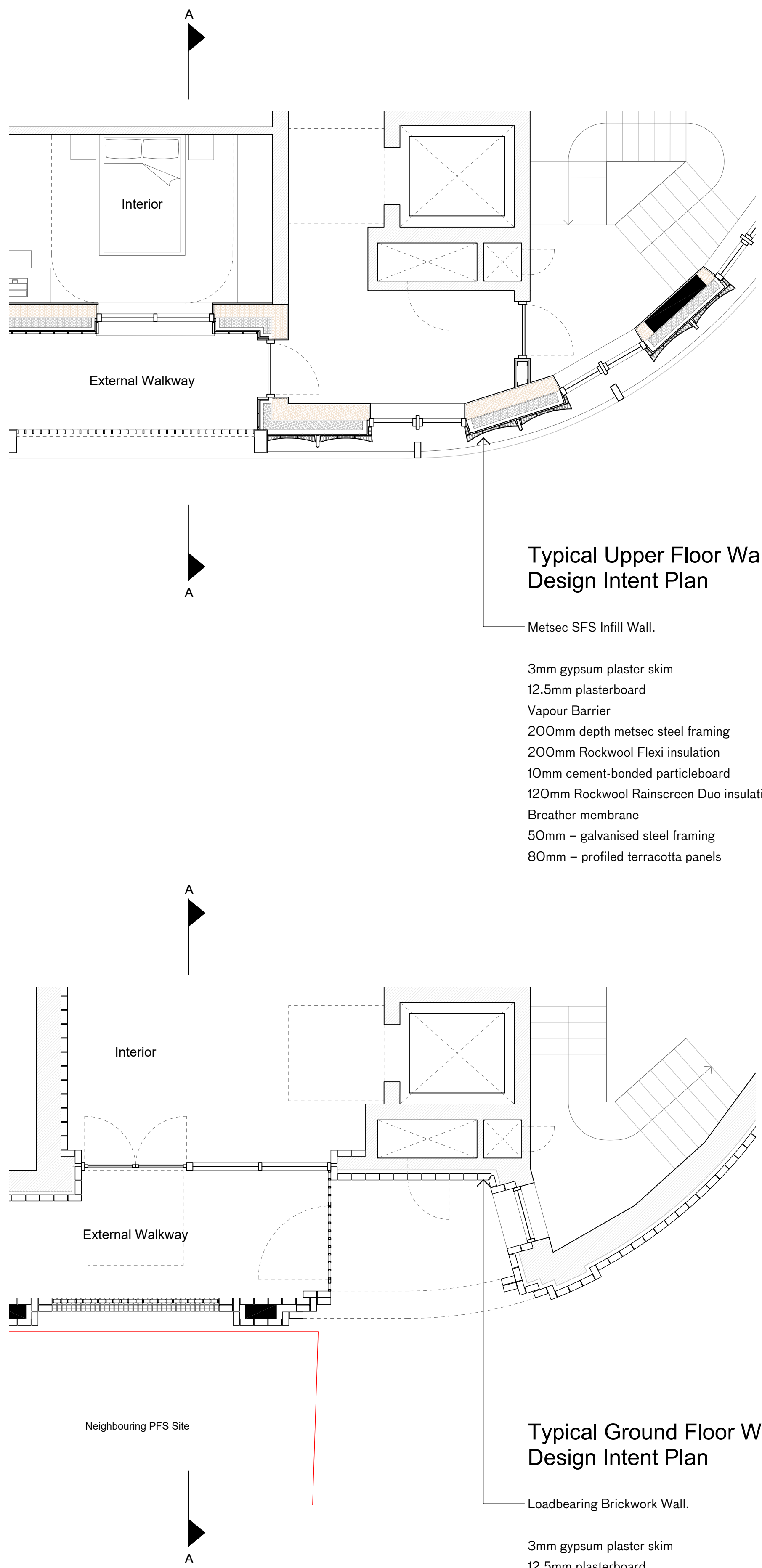
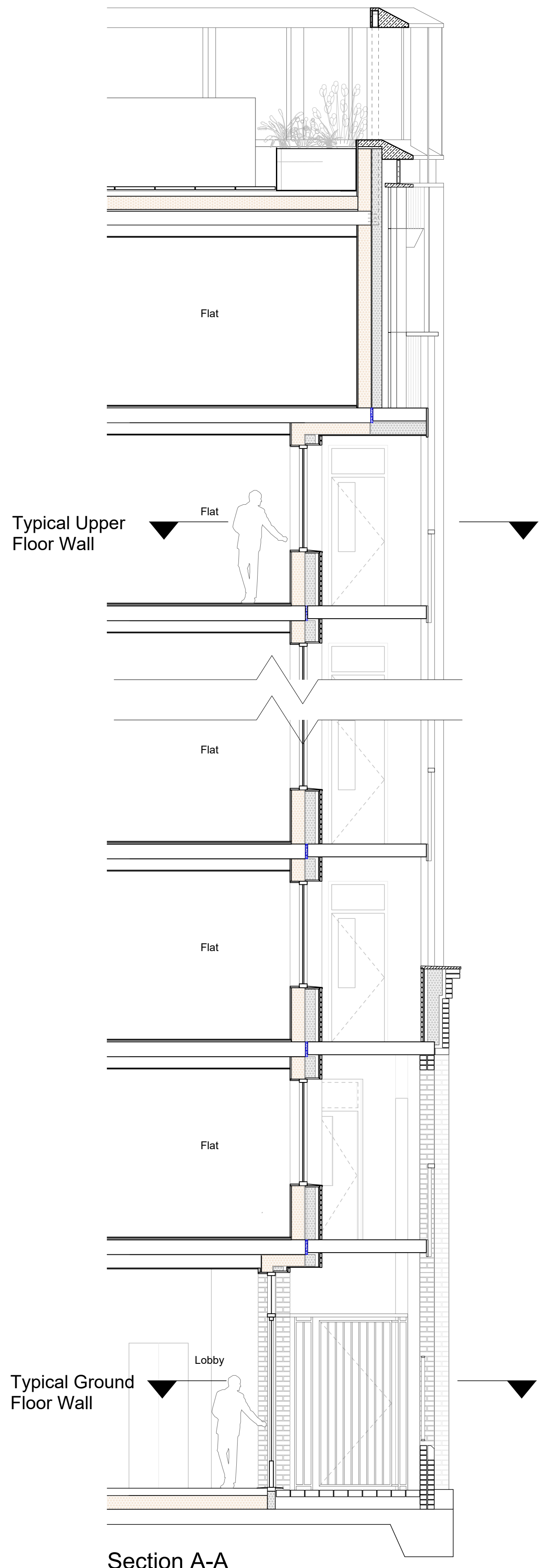
| rev  | date | check   | comments |
|--|------|---|----------|
| <b>DSDHA</b><br>357 Kennington Lane London SE11 5QY<br>T 020 7703 3555<br>F 020 7703 3890<br>E info@dsdha.co.uk<br>W www.dsdha.co.uk |      |   |          |
| project  |      |   |          |
| 100 Chalk Farm Road  |      |   |          |
| drawing title  |      |   |          |
| PBSA East Drum Bay Study   |      |   |          |
| drawn  | size | date  | scale    |
| FI   | A1   | 28/05/24  | 1 : 50   |
| drawing number   |      |   | revision |
| 356_P50.002  |      |   | B        |
| REPORT DISCREPANCIES<br>DO NOT SCALE FROM THIS DRAWING<br>COPYRIGHT DSDHA  |      | USE LATEST REVISION<br>CHECK DIMENSIONS ON SITE |          |





Affordable Housing Entrance Bay Study

1m 2m 5m



NOTES

Site Boundary

Bay Study Location

30/05/24 Planning Revision B  
28/05/24 Planning

# PLANNING

| rev  | date | check   | comments |
|--|------|---|----------|
| <b>DSDHA</b><br>357 Kennington Lane London SE11 5QY<br>T 020 7703 3555<br>F 020 7703 3890<br>E info@dsdha.co.uk<br>W www.dsdha.co.uk |      |   |          |
| project  |      |   |          |
| 100 Chalk Farm Road  |      |   |          |
| drawing title  |      |   |          |
| Affordable Housing Entrance Bay Study  |      |   |          |
| drawn  | size | date  | scale    |
| FI   | A1   | 28/05/24  | 1 : 50   |
| drawing number   |      |   | revision |
| 356_P50.003  |      |   | B        |
| REPORT DISCREPANCIES<br>DO NOT SCALE FROM THIS DRAWING<br>COPYRIGHT DSDHA  |      | USE LATEST REVISION<br>CHECK DIMENSIONS ON SITE |          |

Typical Upper  
Floor Wall Detail

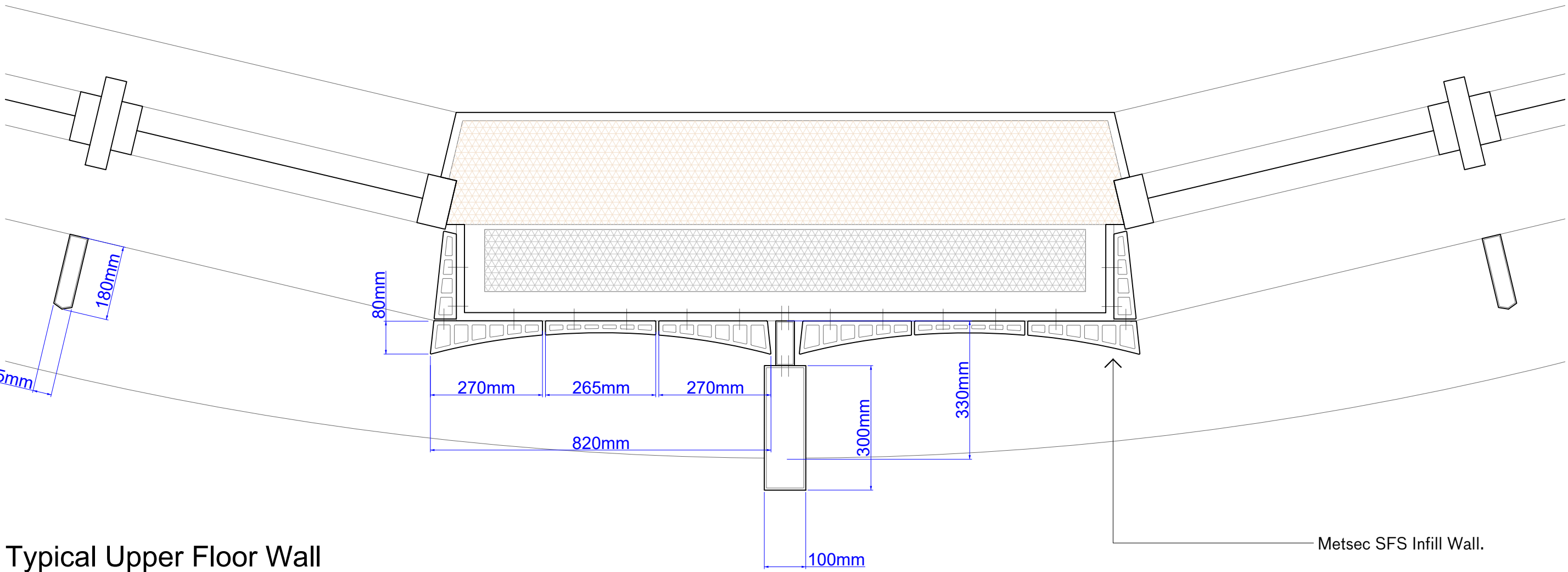


Typical Mid  
Floor Wall Detail

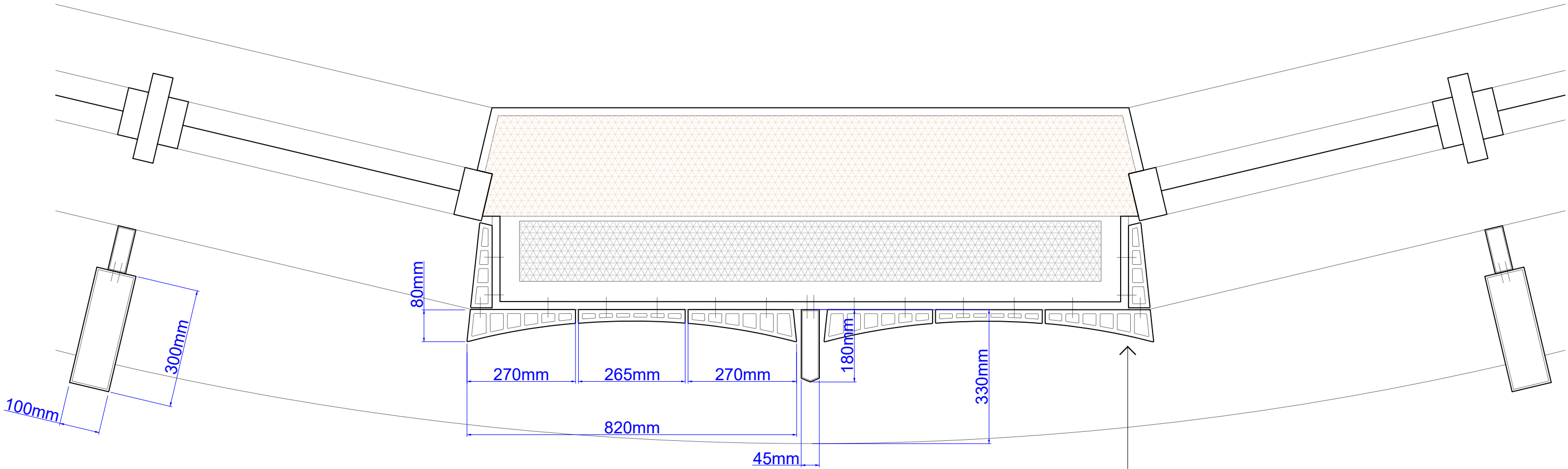


Detail Elevation 1:20 at A1

PBSA North Drum Bay Study Detail



Typical Upper Floor Wall  
Design Intent Plan  
1:10 at A1



Typical Mid Floor Wall  
Design Intent Plan  
1:10 at A1

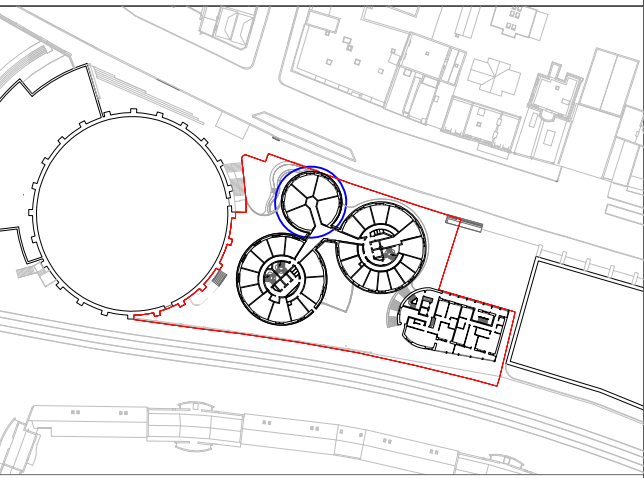
Metsec SFS Infill Wall.

- 3mm gypsum plaster skim
- 12.5mm plasterboard
- Vapour Barrier
- 200mm depth metsec steel framing
- 200mm Rockwool Flexi insulation
- 10mm cement-bonded particleboard
- 120mm Rockwool Rainscreen Duo insulation
- Breather membrane
- 50mm – galvanised steel framing
- 80mm – profiled terracotta panels

Metsec SFS Infill Wall.

- 3mm gypsum plaster skim
- 12.5mm plasterboard
- Vapour Barrier
- 200mm depth metsec steel framing
- 200mm Rockwool Flexi insulation
- 10mm cement-bonded particleboard
- 120mm Rockwool Rainscreen Duo insulation
- Breather membrane
- 50mm – galvanised steel framing
- 80mm – profiled terracotta panels

NOTES



- Site Boundary
- Bay Study Location

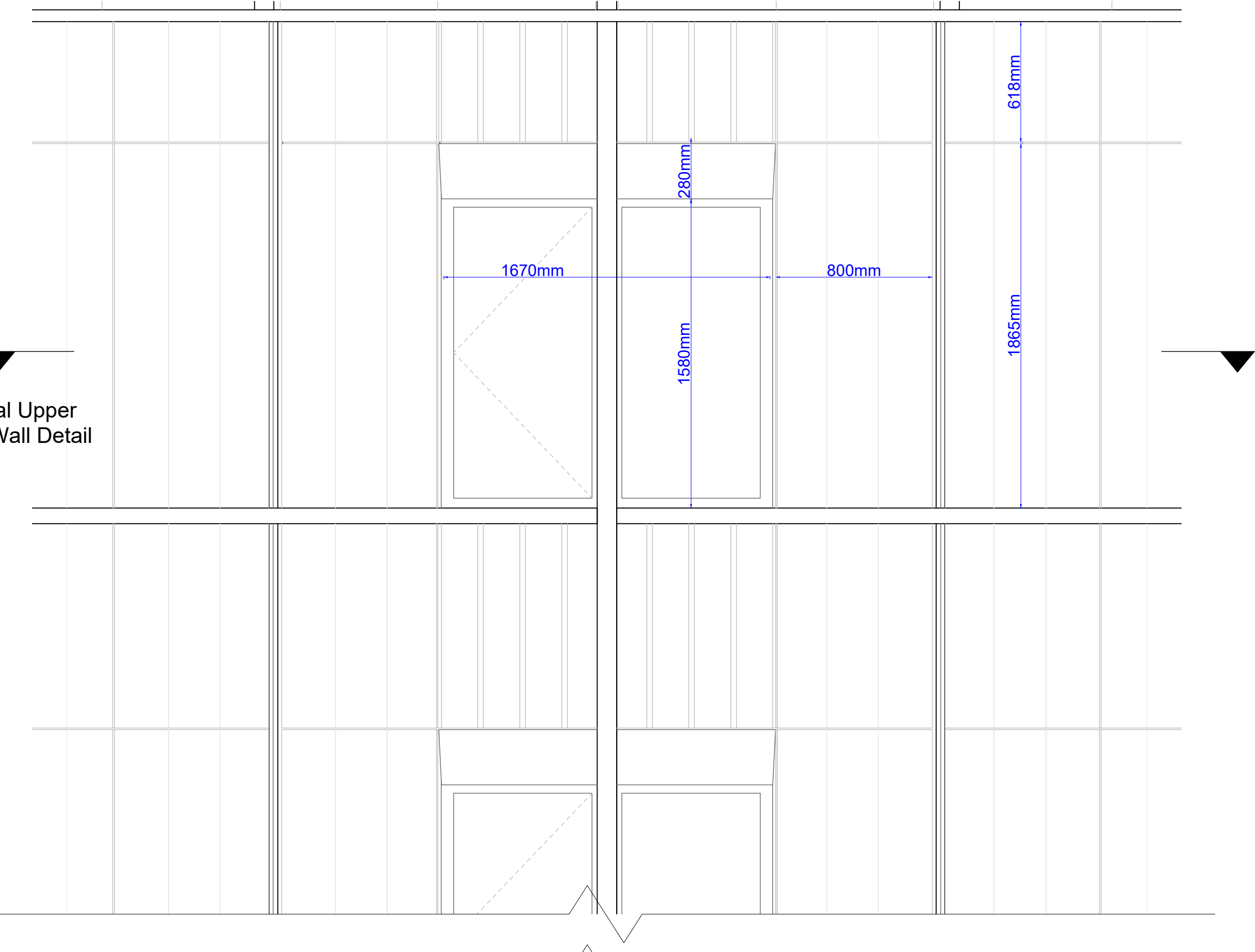
30/05/24 Planning Revision B  
28/05/24 Planning

PLANNING

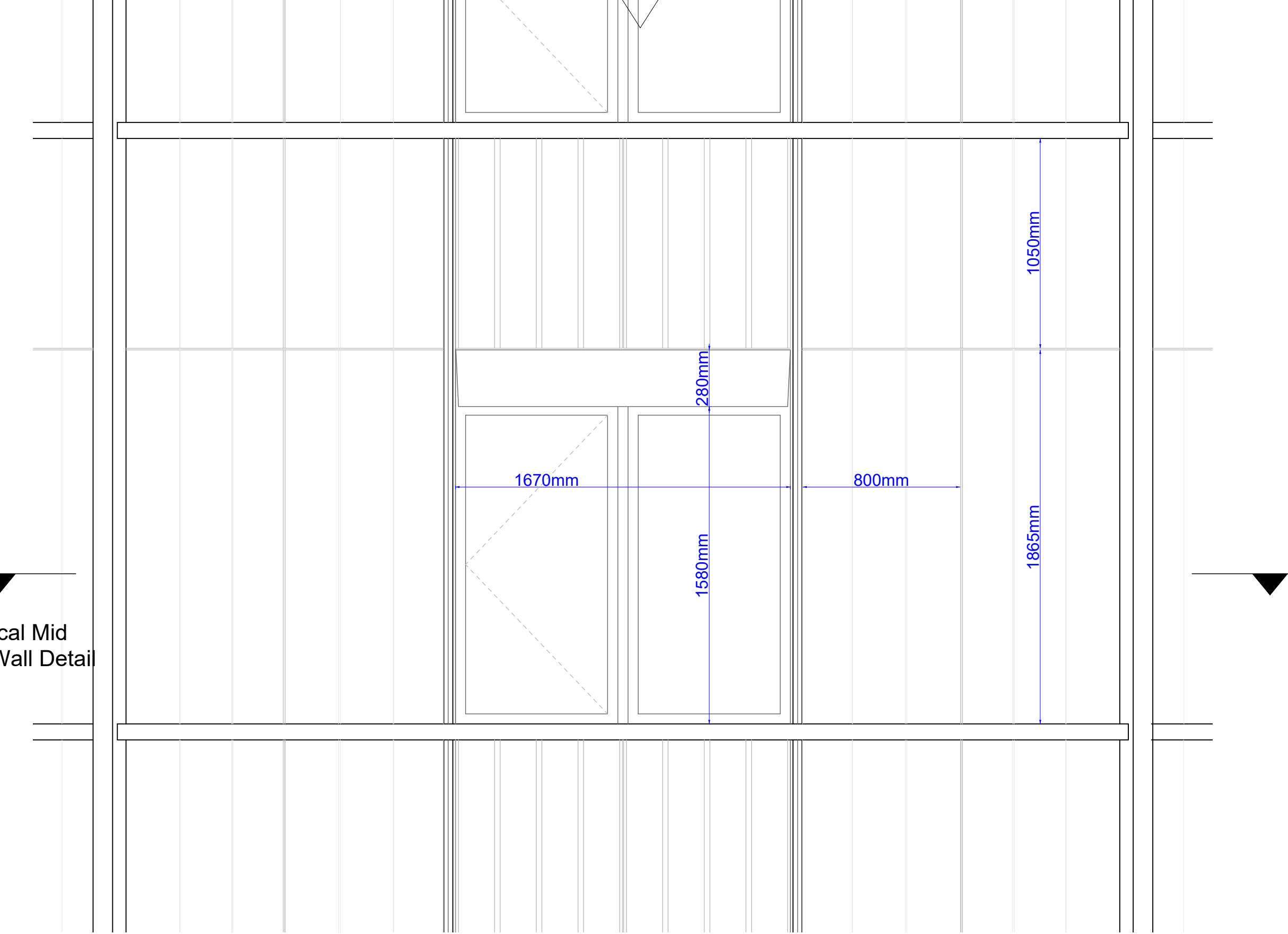
| rev  | date | check   | comments |
|--|------|---|----------|
| <strong>DSDHA</strong><br>357 Kennington Lane London SE11 5QY<br>T 020 7703 3555<br>F 020 7703 3890<br>E info@dsdha.co.uk<br>W www.dsdha.co.uk |      |   |          |
| project  |      |   |          |
| 100 Chalk Farm Road  |      |   |          |
| drawing title  |      |   |          |
| PBSA North Drum Bay Study Detail   |      |   |          |
| drawn  | size | date  | scale    |
| F1   | A1   | 28/05/24  | Varies   |
| drawing number   |      |   | revision |
| 356_P50.004  |      |   | B        |
| REPORT DISCREPANCIES<br>DO NOT SCALE FROM THIS DRAWING<br>COPYRIGHT DSDHA  |      | USE LATEST REVISION<br>CHECK DIMENSIONS ON SITE |          |



Typical Upper  
Floor Wall Detail



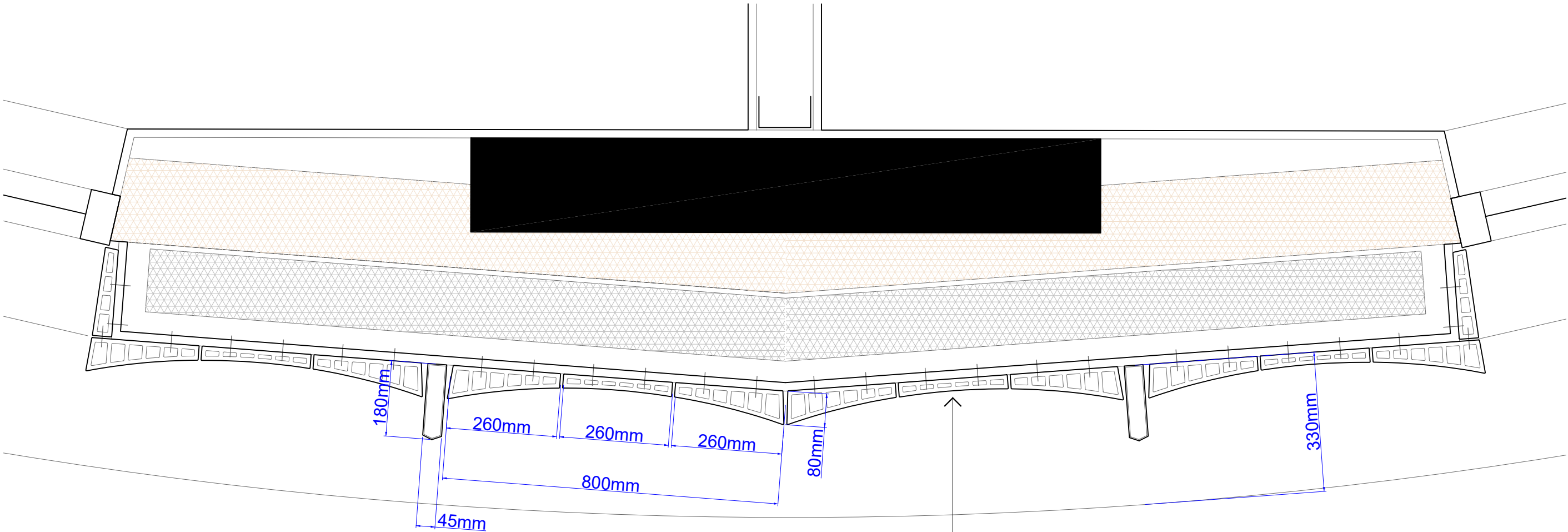
Typical Mid  
Floor Wall Detail



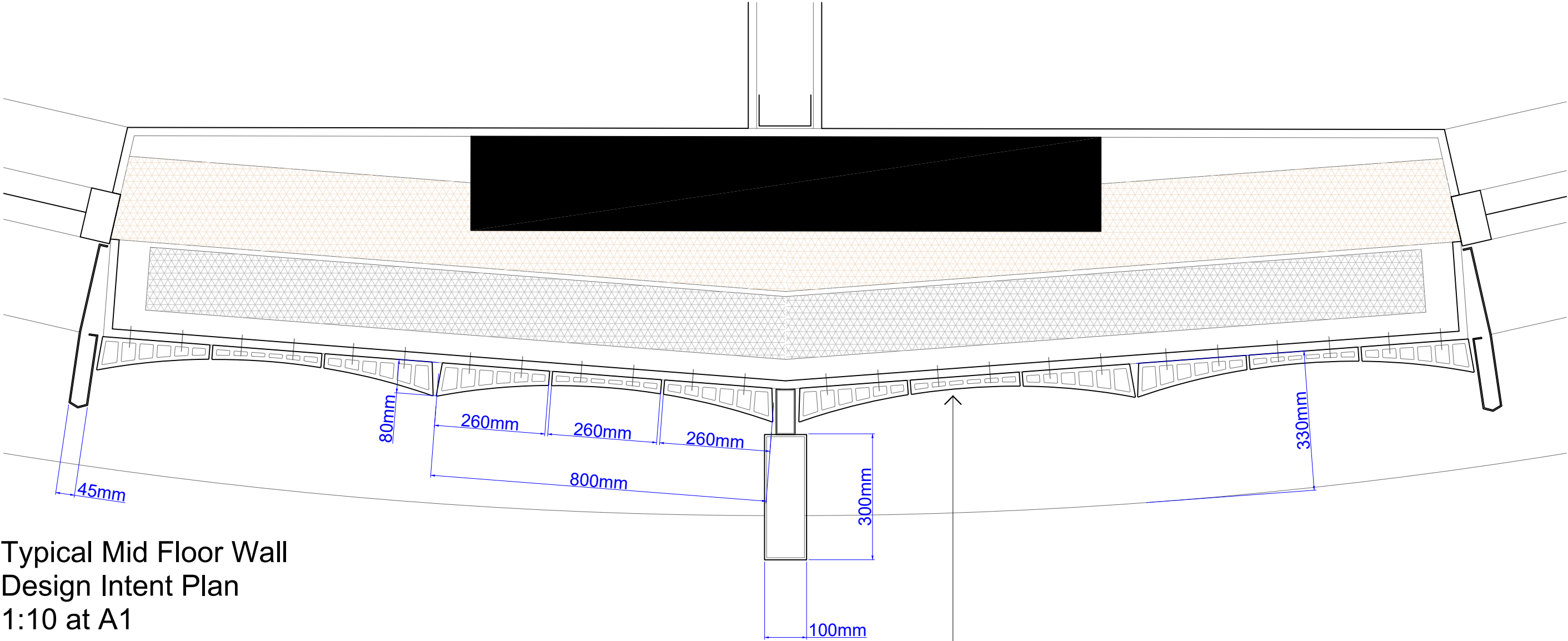
Detail Elevation 1:20 at A1

PBSA East Drum Bay Study Detail

Typical Upper Floor Wall  
Design Intent Plan  
1:10 at A1



Typical Mid Floor Wall  
Design Intent Plan  
1:10 at A1



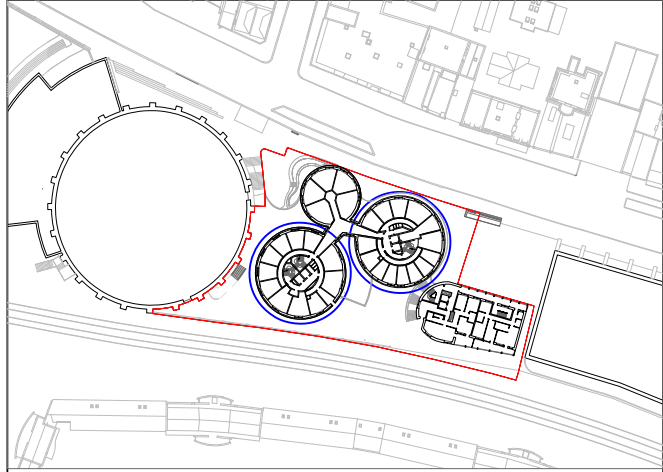
Metsec SFS Infill Wall.

- 3mm gypsum plaster skim
- 12.5mm plasterboard
- Vapour Barrier
- 200mm depth metsec steel framing
- 200mm Rockwool Flexi insulation
- 10mm cement-bonded particleboard
- 120mm Rockwool Rainscreen Duo insulation
- Breather membrane
- 50mm – galvanised steel framing
- 80mm – profiled terracotta panels

Metsec SFS Infill Wall.

- 3mm gypsum plaster skim
- 12.5mm plasterboard
- Vapour Barrier
- 200mm depth metsec steel framing
- 200mm Rockwool Flexi insulation
- 10mm cement-bonded particleboard
- 120mm Rockwool Rainscreen Duo insulation
- Breather membrane
- 50mm – galvanised steel framing
- 80mm – profiled terracotta panels

NOTES



- Site Boundary
- Bay Study Location

30/05/24 Planning Revision B  
28/05/24 Planning

PLANNING

| rev  | date | check   | comments |
|--|------|---|----------|
| <b>DSDHA</b><br>357 Kennington Lane London SE11 5QY<br>T 020 7703 3555<br>F 020 7703 3890<br>E info@dsdha.co.uk<br>W www.dsdha.co.uk |      |   |          |
| project  |      |   |          |
| 100 Chalk Farm Road  |      |   |          |
| drawing title  |      |   |          |
| PBSA East Drum Bay Study Detail  |      |   |          |
| drawn  | size | date  | scale    |
| F1   | A1   | 28/05/24  | Varies   |
| drawing number   |      |   | revision |
| 356_P50.005  |      |   | B        |
| REPORT DISCREPANCIES<br>DO NOT SCALE FROM THIS DRAWING<br>COPYRIGHT DSDHA  |      | USE LATEST REVISION<br>CHECK DIMENSIONS ON SITE |          |