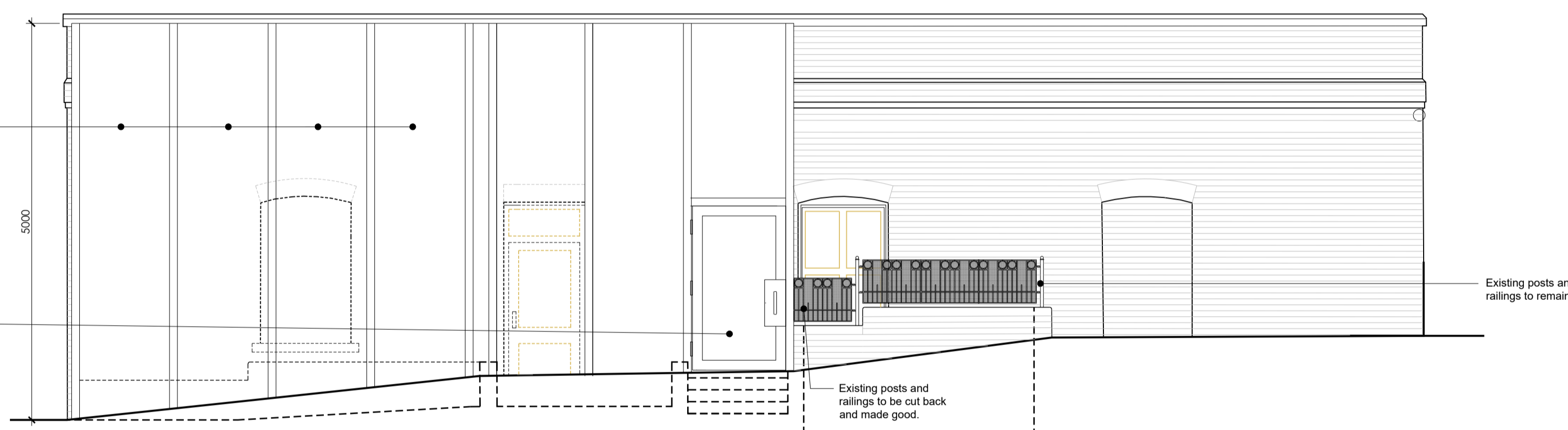
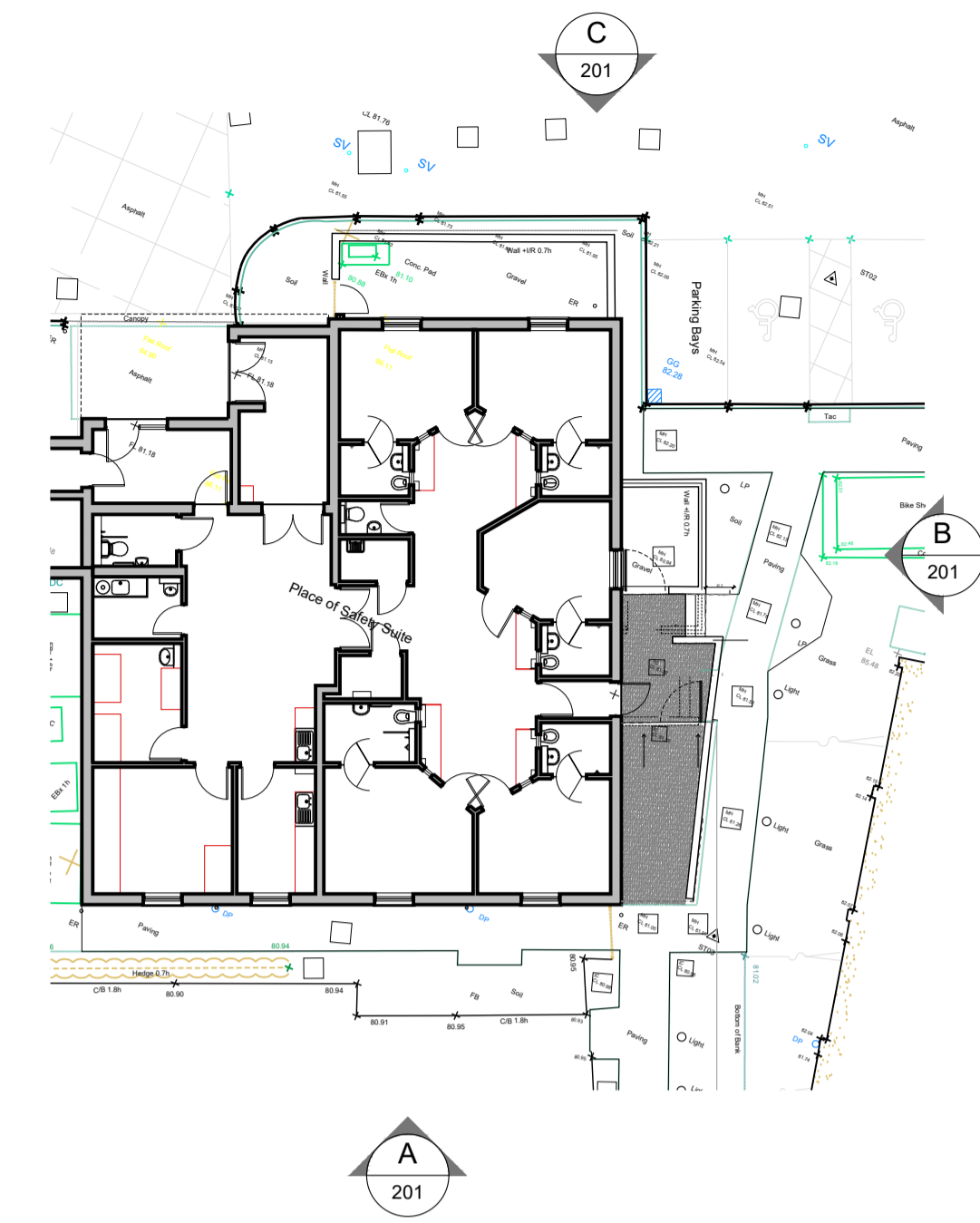




Proposed South Elevation
 Scale 1:50

Single skin powder coated 358 welded mesh security fence fixed to post through clamp bar with M10 bolts at max' 150mm c/c. Colour Green RAL 6005.
 Base of mesh to be cast 150mm into ground beam. With Cloaking sheets on both sides. 2mm EN AW-3005A grade aluminium sheet, polyester coated Tectura architectural finish, Image printing (if applicable) TBC.
 Powder coated steel posts by fencing contractor. Size TBC. Colour Green RAL 6005.



Proposed East Elevation
 Scale 1:50

Single skin powder coated 358 welded mesh security fence fixed to post through clamp bar with M10 bolts at max' 150mm c/c. Colour Green RAL 6005.
 Base of mesh to be cast 150mm into ground beam. With Cloaking sheets on both sides. 2mm EN AW-3005A grade aluminium sheet, polyester coated Tectura architectural finish, Image printing (if applicable) TBC.
 Powder coated steel posts by fencing contractor. Size TBC. Colour Green RAL 6005.
 New 1.2m wide x 2.1m high galv' steel gate to be manufactured from galv' 100x100x6mm R.H.S with galv' steel mesh cover bolted on as described elsewhere for fencing.
 Allow to weld on steel plate for proposed lock set and 1No 300mm steel 'D' handle to external face and include 1No 32mm diam' 600mm long lockable galv' steel barrel bolt. 3m high cloaking mild steel plate fixed at the centre of the steel mesh 358 fencing

Existing posts and railings to remain.

datum 80.00

Existing posts and railings to be cut back and made good.

All information on the drawing is indicative and is subject to a topographical and measured survey, once complete the drawing will be updated

PLANNING

PL1	27.11.24	Planning Issue	TJM	TC
REV	DATE	DESCRIPTION	BY	APP'D

CLIENT
NHS
 Camden and Islington
 NHS Foundation Trust

PROJECT
 S136 Place of safety unit
 Highgate Acute Mental Health Centre
 Dartmouth Park Hill
 London N19 5JG

DRAWING TITLE
 Garden security fencing Feasibility

Proposed Elevations-Option 2

DATE	04.10.24	DWG. No.	5334-201	REV.	PL1
SCALE	1:50 (A1)				
DRAWN BY:	DLM	DATED	-		
CHECKED BY:	-	DATED	-		

AK DESIGN PARTNERSHIP LLP
 CHARTERED BUILDING CONSULTANCY
 BUILDING SURVEYORS
 BUILDING DESIGNERS
 PROJECT MANAGERS

CEME INNOVATION CENTRE
 CEME CAMPUS
 MARSH WAY
 RAINHAM
 RM13 8EU

TEL: 020 8596 7070
 E-MAIL: office@akdesign.co.uk
 WEB SITE: www.akdesign.co.uk



Proposed North Elevation
 Scale 1:50

Single skin powder coated 358 welded mesh security fence fixed to post through clamp bar with M10 bolts at max' 150mm c/c. Colour Green RAL 6005.
 Base of mesh to be cast 150mm into ground beam.
 Powder coated steel posts by fencing contractor. Size TBC. Colour Green RAL 6005.
 New 1.2m wide x 2.1m high galv' steel gate to be manufactured from galv' 100x100x6mm R.H.S with galv' steel mesh cover bolted on as described elsewhere for fencing.
 Allow to weld on steel plate for proposed lock set and 1No 300mm steel 'D' handle to external face and include 1No 32mm diam' 600mm long lockable galv' steel barrel bolt. 3m high cloaking mild steel plate fixed at the centre of the steel mesh 358 fencing

Form new steps and retaining wall. cut back earth and cart away.



SCALE 1:200



SCALE 1:50