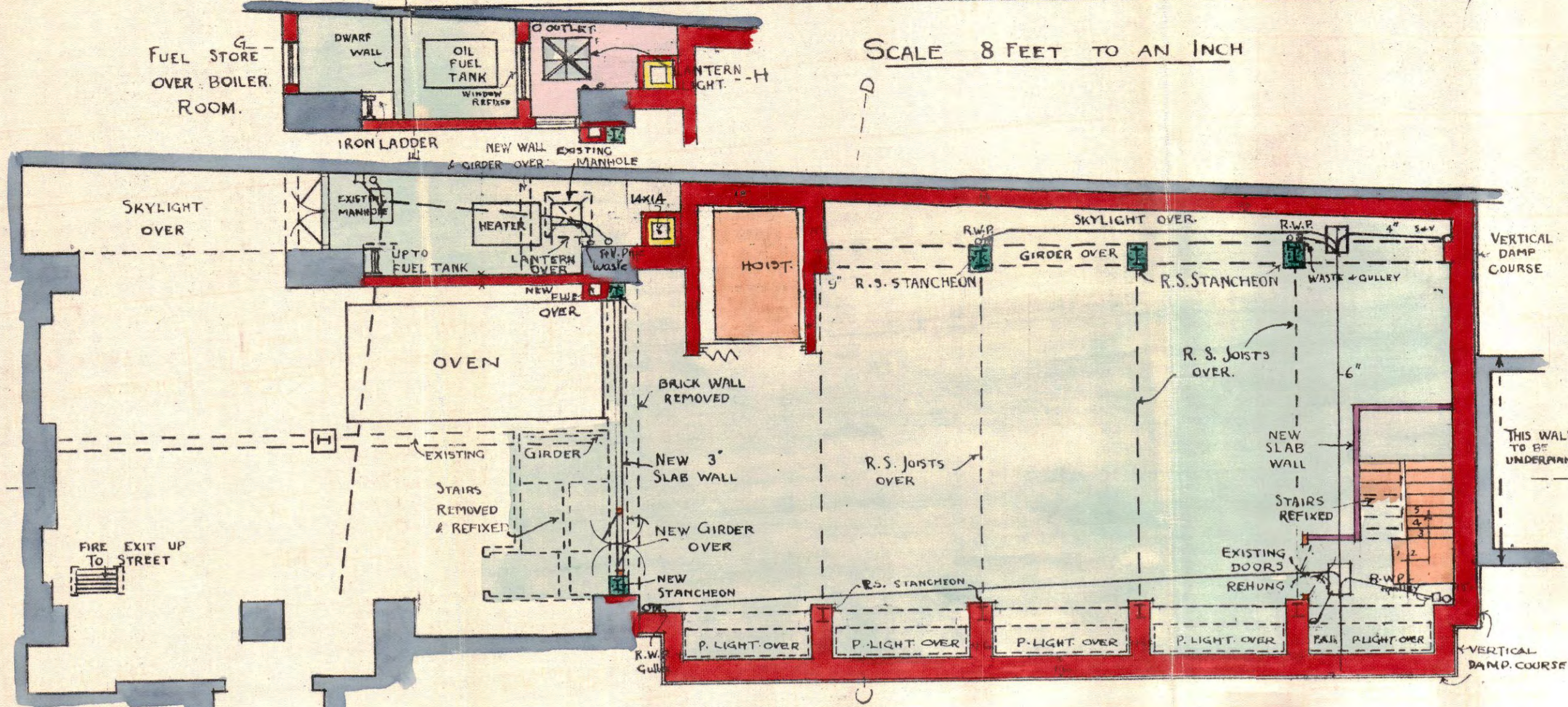
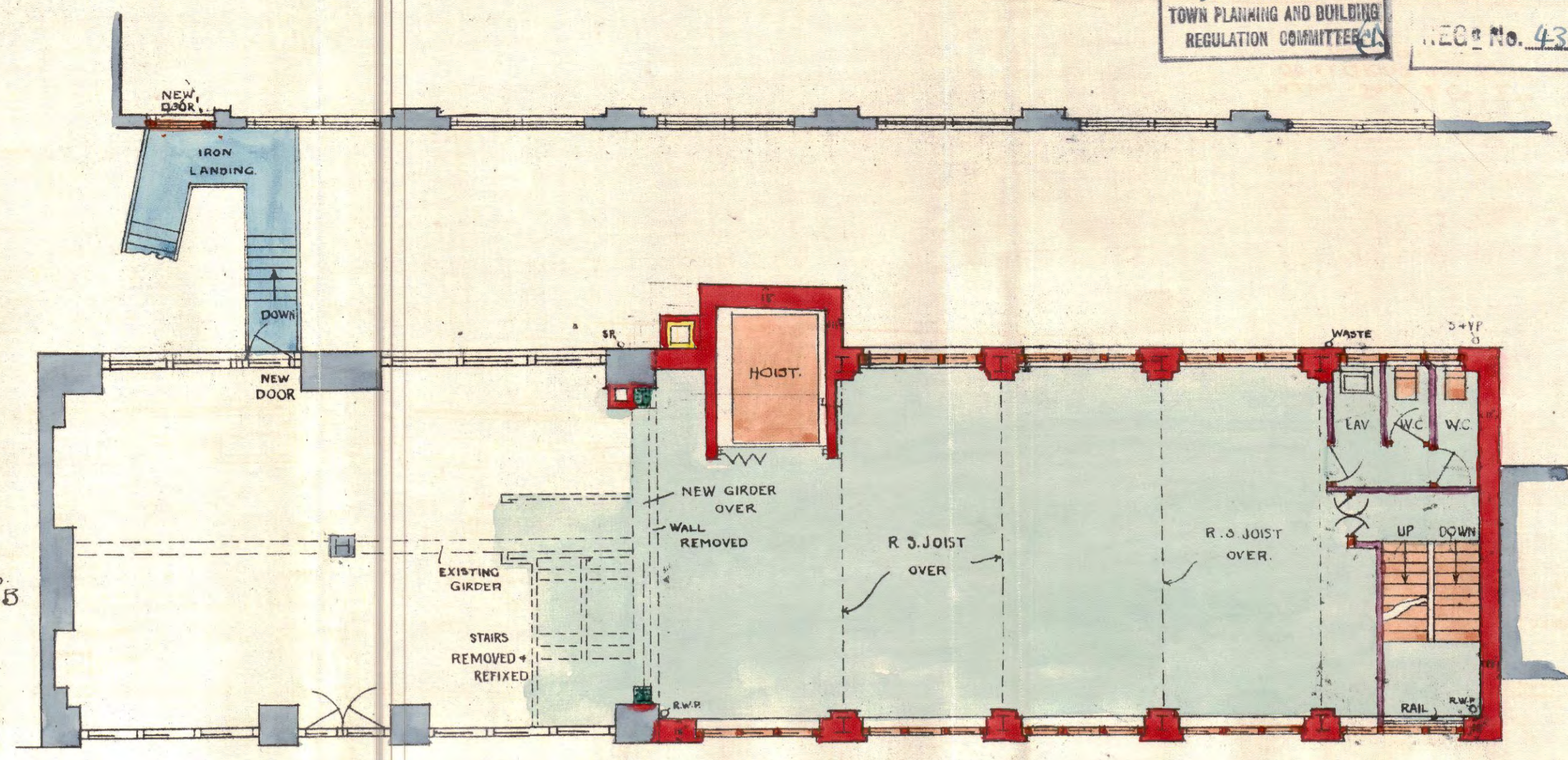


MESSRS FREDK SAGE & CO LTD  
PROPOSED EXTENSIONS TO NO 12 VERULAM ST. EC.

SCALE 8 FEET TO AN INCH

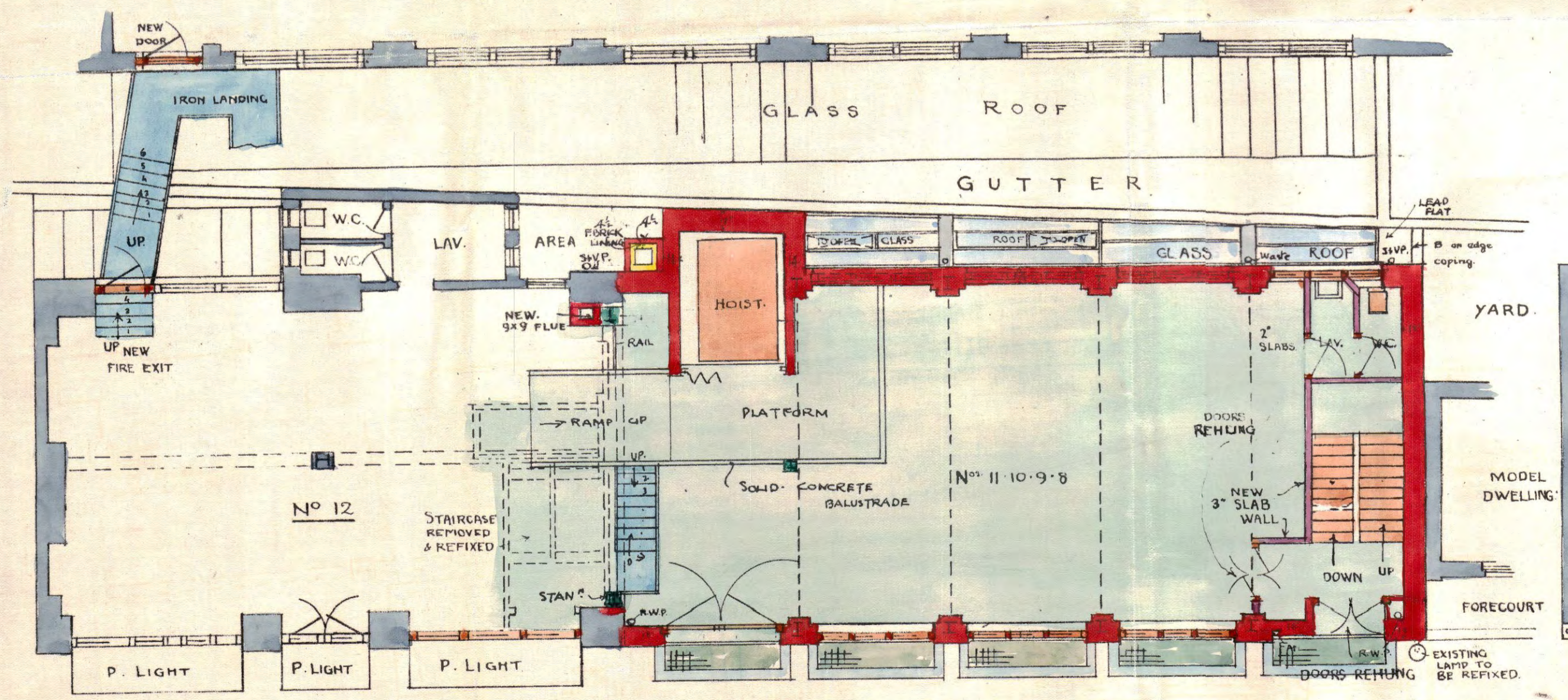


- BASEMENT PLAN -

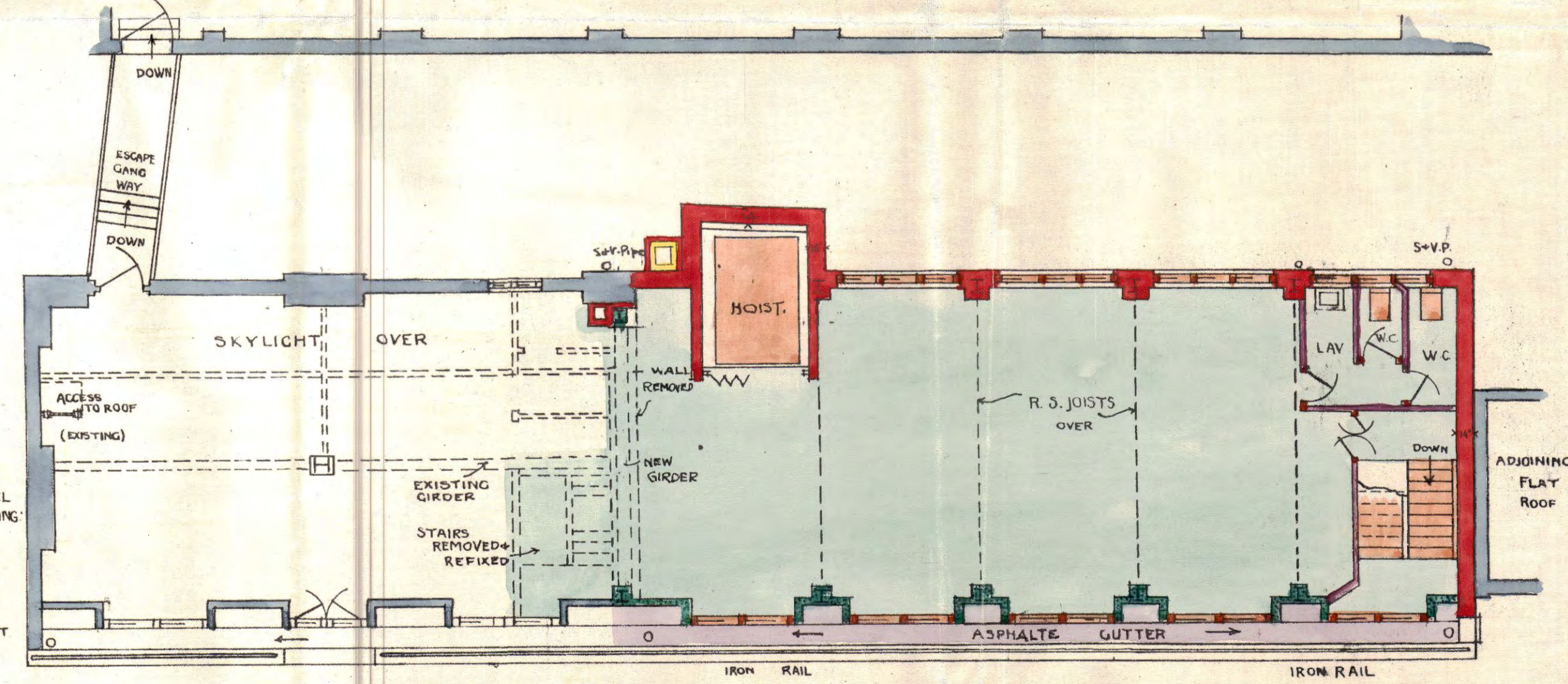


- FIRST FLOOR PLAN -

MESSRS SAGES PREMISES



- GROUND FLOOR PLAN -



- SECOND FLOOR PLAN -

V E R U L A M S T

78 48  
27  
687  
1960  
2646  
48  
1053 40  
211 68  
1269 08

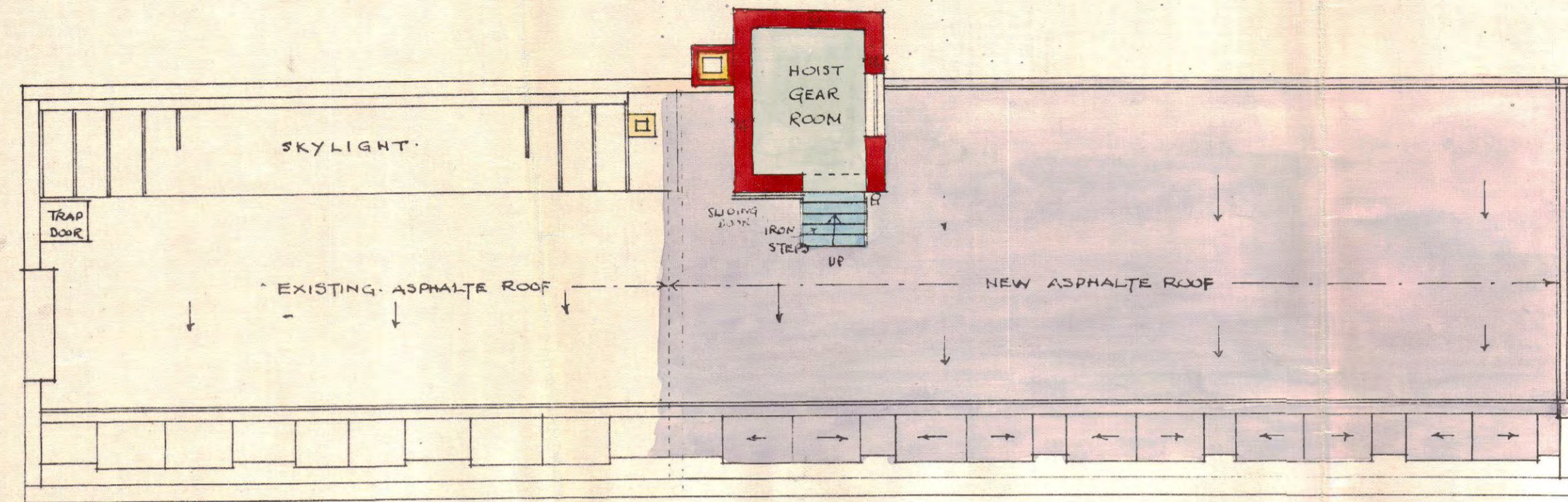
L.C.C. ARCHITECTS DEPT  
30 DEC 1937 - 192580

FREDK SAGE & CO LTD  
58-62 GRAYS INN ROAD W.C.1  
NOV 1937

MESS<sup>RS</sup> FREDK SAGE & CO LTD  
 PROPOSED EXTENSIONS TO NO 12 VERULAM ST. EC.

SCALE 8 FEET TO AN INCH.

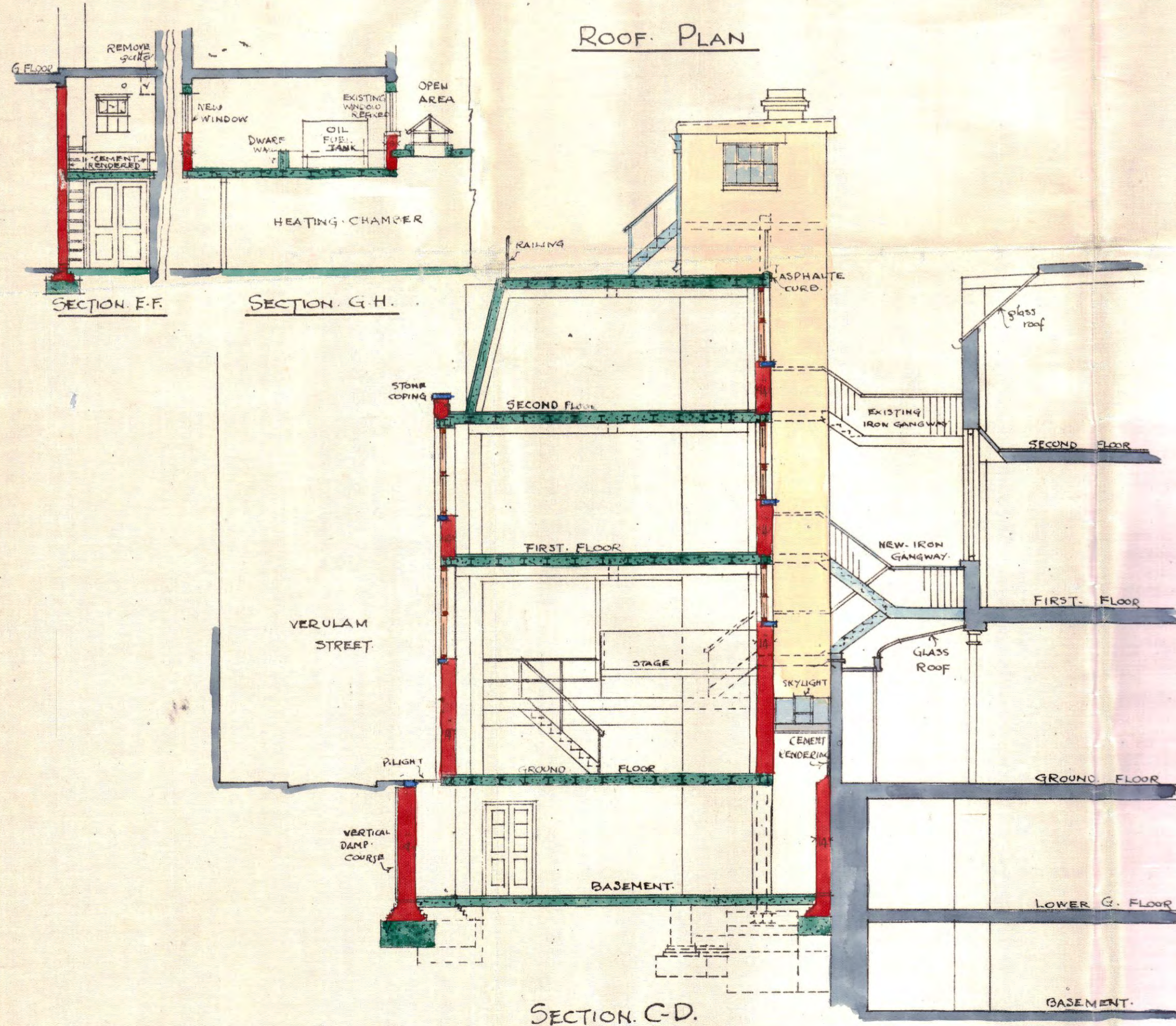
PRESENTED TO  
 27 JAN 1938  
 TOWN PLANNING AND BUILDING  
 REGULATION COMMITTEE  
 REC. No. 4369



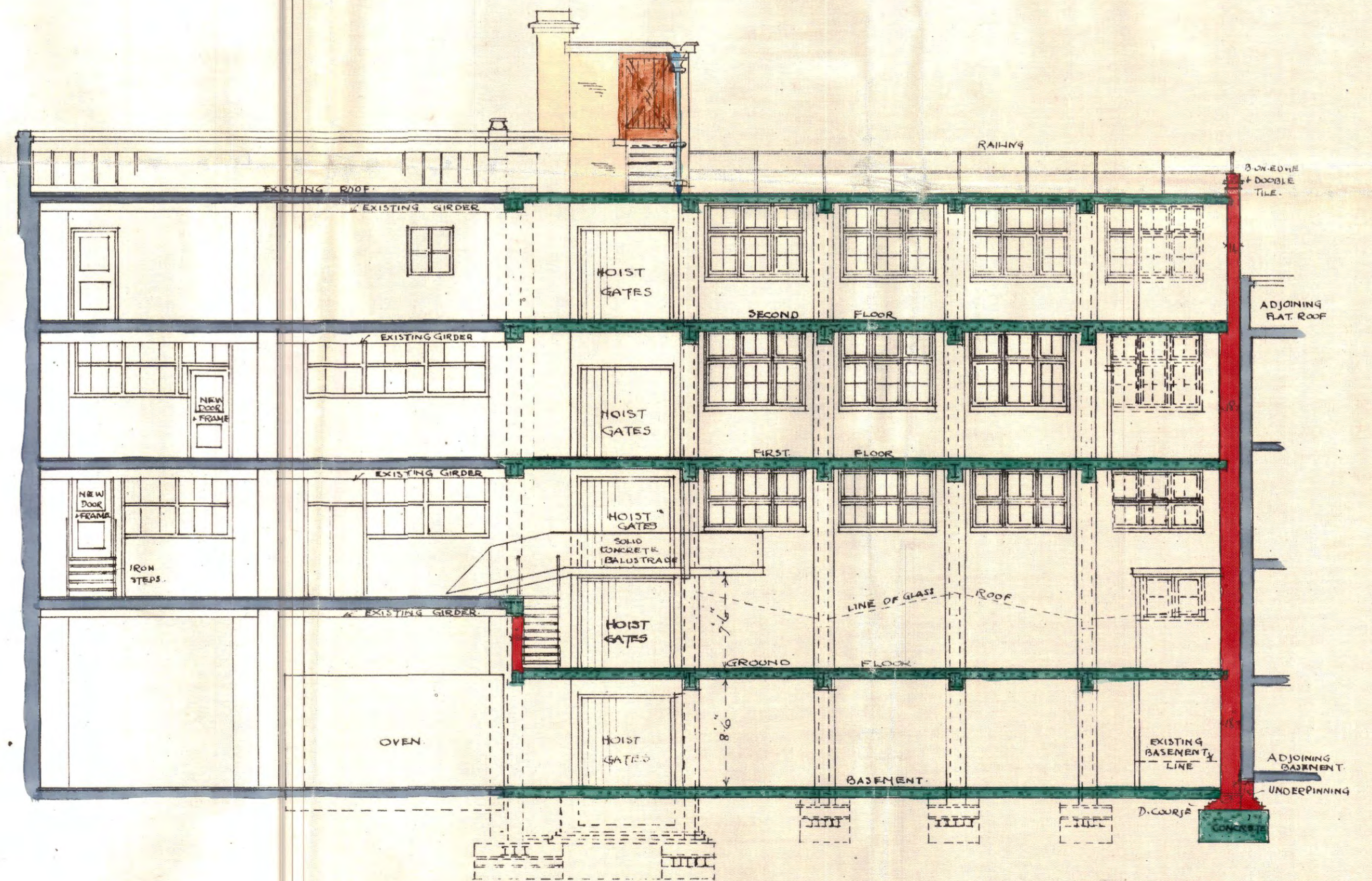
ROOF PLAN



FRONT ELEVATION



SECTION C-D



SECTION A-B

L.C.C.  
 ARCHITECTS DEPT  
 30 DEC 1937 - 192580  
 FREDK SAGE & CO LTD  
 38-62 GRAY'S INN ROAD W.C.  
 NOV 1937