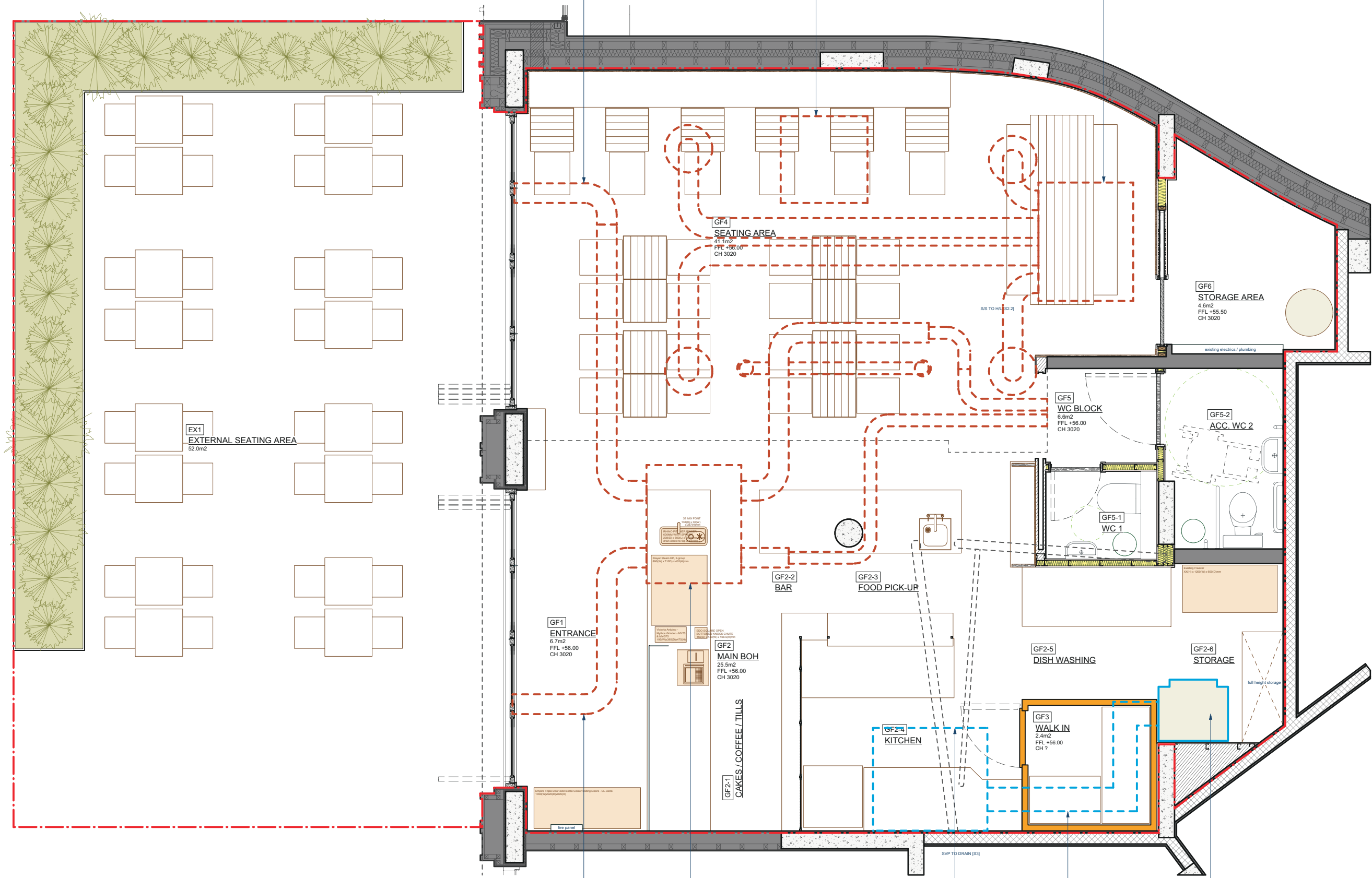


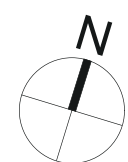
Air ventilation system - existing MVHR unit (air ventilation separate to kitchen extraction)
AC Cassette unit - existing unit moved to a new location
Air ventilation system - existing ducts slightly realtered to cater for new kitchen and shop layout (air ventilation separate to kitchen extraction) - extract duct connected to plenum above the shopfront door to the north



Air ventilation system - existing ducts slightly realtered to cater for new kitchen and shop layout (air ventilation separate to kitchen extraction) - supply duct connected to plenum above the shopfront door to the south

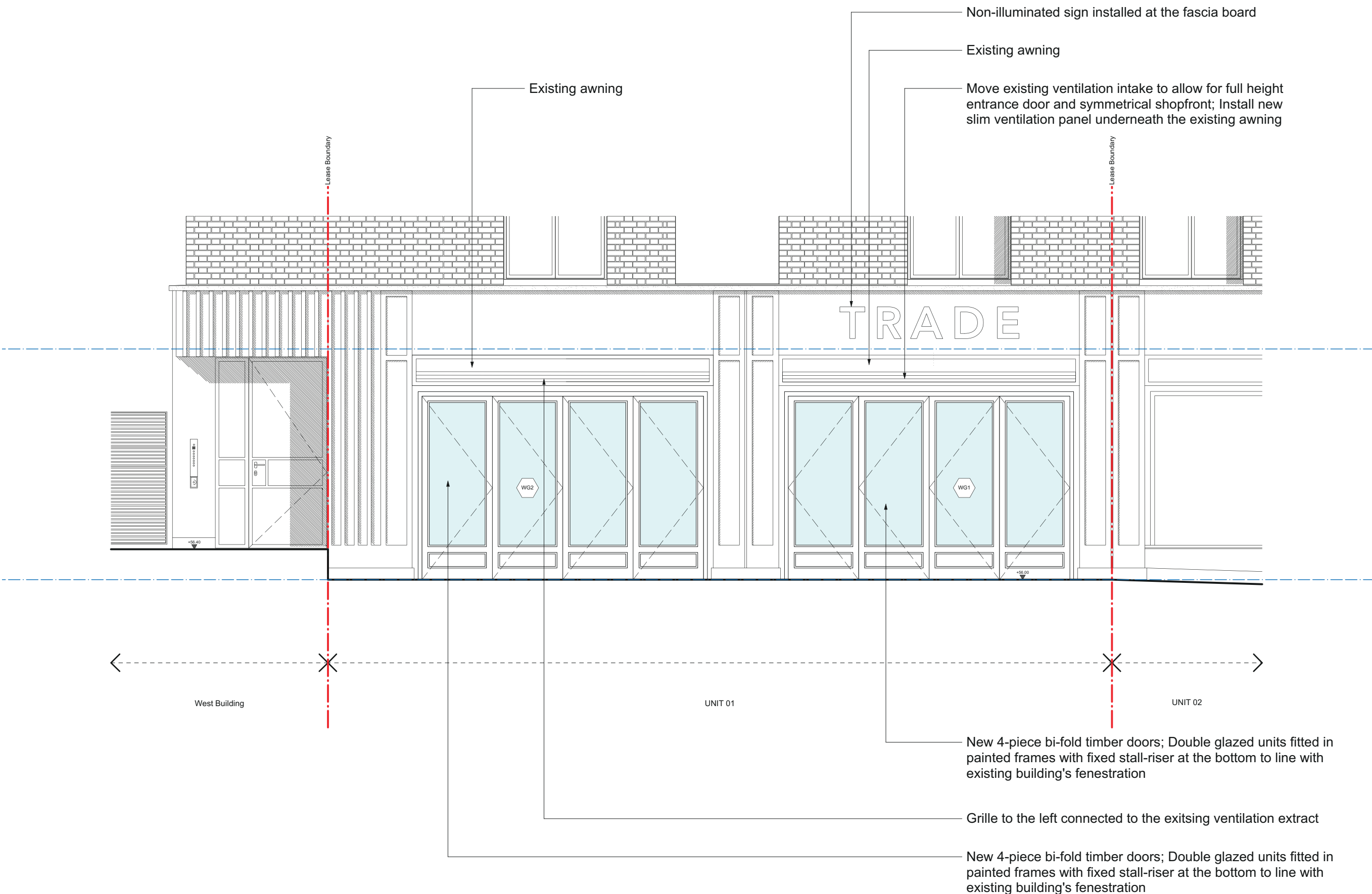
Air ventilation system - existing MVHR unit (air ventilation separate to kitchen extraction)

Reco-air unit specification: Floor standing RAO.5 recirculation unit
Ductwork connecting kitchen hood with Reco-air recirculation unit
Extraction hood over the kitchen area



1 PROPOSED GROUND FLOOR PLAN
Scale 1:50@A1 / 1:100@A3

2 PROPOSED FRONT ELEVATION
Scale 1:50@A1 / 1:100@A3



Non-illuminated sign installed at the fascia board
Existing awning
Move existing ventilation intake to allow for full height entrance door and symmetrical shopfront; Install new slim ventilation panel underneath the existing awning
New 4-piece bi-fold timber doors; Double glazed units fitted in painted frames with fixed stall-riser at the bottom to line with existing building's fenestration
Grille to the left connected to the exiting ventilation extract
New 4-piece bi-fold timber doors; Double glazed units fitted in painted frames with fixed stall-riser at the bottom to line with existing building's fenestration