

5 - 7 Adamson Road London NW3 3HX

Consent for Planning Application No. 2023/4651/P dated 23 October 2024

Application to discharge conditions 2024/4909/P

4 a) New window and door openings.

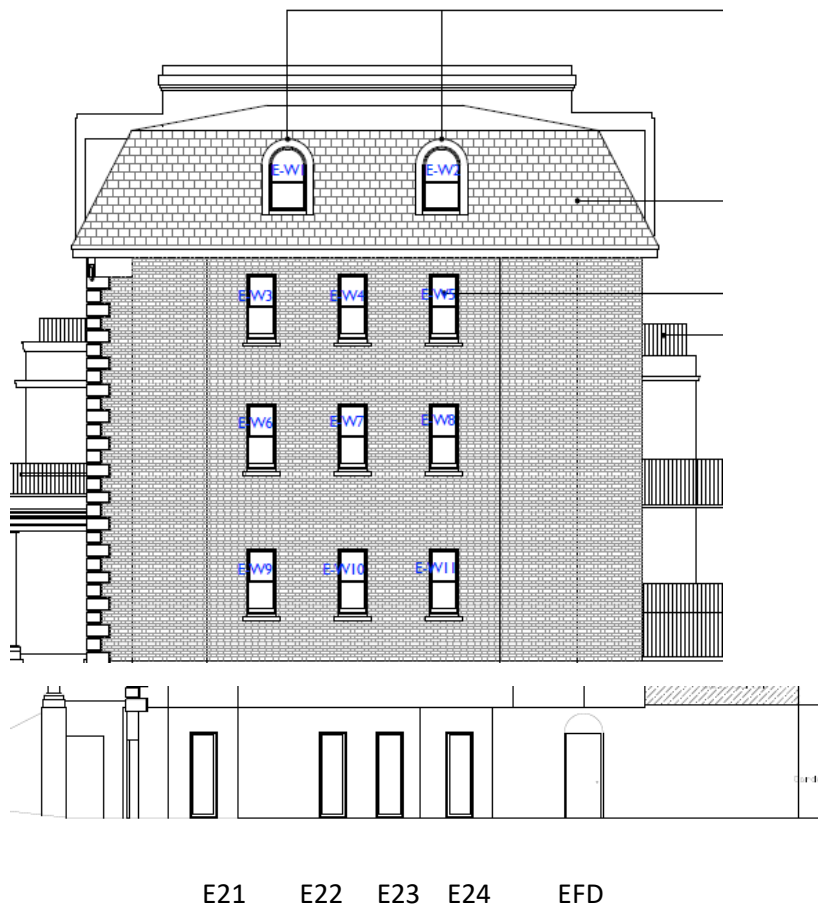
Window and door schedule: see file name: 2024 4909 P New Window and door schedule:

Below: Elevations to identify the windows and doors

East Elevation Windows

E-W1, E-W2 - 900mm(w) x 1500mm (h, top of arch)

E-W3,4,5,6,7,8,9,10,11 - 700mm(w) x 1500mm(h)



Lower ground floor window numbers and front door number

West Elevation schedule

W-W1 & W-W2 - 900mm (w) x 1500mm (h, top of arch)

W-W3,4,5,6,7,8,9,10,11 - 700mm (w) x 1500mm (h)



Lower ground floor window numbers and front door number

South Elevation - Dormer Windows

S-W1, S-W4 - 900mm (w) x 1900mm (h, top of arch)

S-W2, S-W3 - 1300mm (w) x 1900mm (h, top of arch)





Lower ground floor Door numbers